

Randall Kilian Corporation

Geologist



**Certified Petroleum
Geologist #3351
License #224**

3951 Eveningglow Way
Castle Rock, CO 80104
Phone: 720-733-0420
Cell: 785-635-1349

E-mail: rkgeo53@hotmail.com

GEOLOGIST'S WELL REPORT

COMPANY FOSSIL ENERGY, LLC (34992)

WELL Simoneau #1

FIELD Wildcat

LOCATION (legal) SW NE NW NW

(footages) 412' FNL & 762' FWL

Section 11 TWP 8S RGE 21W

(Map) 1 mi S & 1 mi W of Nic

COUNTY Graham STATE Kansas

ELEVATION: 2012' K.B., 2004' G.L.

Depths measured from Kelly Bushing

A. P. I. NUMBER 15-065-24176

GEOLOGY BY Randall Kilian

PERTINENT WELL DATA

CONTRACTOR Discovery Drilling (31548)

RIG #4 HYDRAULICS D-375 6x14x60
(Galen Gaschler TP)

DRILL PIPE 4½" XH COLLARS 6½" 17 (515')

CASING: SURFACE 8 5/8" @ 265' w/ 175 Sx 60/40 Po

PRODUCTION None

DRILLING FLUID. COMPANY Andy's Mud & Chemical Co.
(Aaron Blew)

TYPE: Chemical-Pac

REMARKS: Full service

DRILL STEM TESTS: COMPANY Diamond Testing LLC
(Kevin Mack)

NUMBER OF TESTS Two (2)

ELECTIC LOGS: COMPANY Pioneer Energy Services

DETAIL (5") 2950' - RTD

TYPE RAG

DRILLING TIME FROM 2950' TO RTD

SAMPLE TIME FROM 2950' TO RTD

SUPERVISION FROM 2950' TO RTD

VERTICAL DEVIATION 1° @ 265', 3/4° @ 2932',

PLUGGING REPORT 50 sx @ 355', 50 @ 1625', 100 @ 800', 50 @ 325'
10 @ 40', 30 Pat, 15 Mouse, 305 sx 60/40 Poz 4% gel, 1/4# FS

RESERVE PIT 700 bbls., Chl. 28,000 Ca. 540

DRILL STEM TESTS

NO	INTERVAL	IFP/TIME	ISIP/TIME	FFP/TIME	FSIP/TIME	IHP/FHP	RECOVERY
1	LKc C-D 3277- 3320'	16# 16# 5"	208# 60"	17# 17# 30"	40# 30"	1543# 1516#	3' Mud w/ oil
2	LKc E-F 3318- 3342'	16# 31# 5"	498# 60"	34# 76# 45"	467# 60"	1561# 1545#	128' M,Wtr
3							
4							
5							
6							
7							
8							

MUD RECORD								Displaced
CHK	DEPTH	WT	VIS	FIL	CHL	YP		
1	2900'							
2	2910'	8.5	64					
3	3027'	8.5	60					
4	3105'	8.5	59					
5	3166'	8.7	51	6.81	250	11		LCM 3#
6	3260'	8.8	55					
7	3320'	8.9	51	7.21	1500	12		LCM 2#
8	3395'	8.7	51					
9	3530'	8.7	49					
10	3575'	9.1	53	8.0	1500	14		LCM 1#
11								

BIT RECORD						
NO	SIZE	MAKE	TYPE	DEPTHOUT	FEET	HOURS
1	12 1/4"	JZ	HA10TC	265'	265'	4 3/4
2	7 7/8"	HTCo	DP506	2932'	2667'	28
3	7 7/8"	HTCo	GX20C	3575'	643'	28 1/2
4						
5						
6						

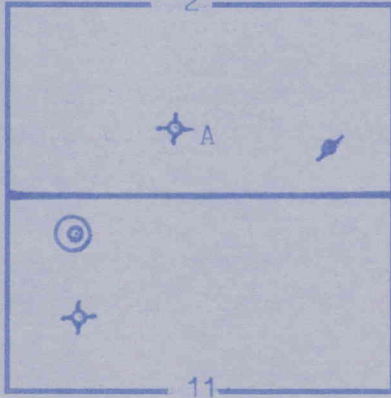
FORMATION TOPS & STRUCTURAL GEOLOGY

R 21 W

2

REFERRED TO:

T
8
S



A: BAIRD OIL CO., LLC

#1-2 Nutsch-Benoit, NE NE SE 9

B: _____

C: _____

D: _____

E: _____

STRATIGRAPHIC

SUBJECT WELL

STRUCTURAL POS

<u>MARKERS</u>	<u>SAMPLES</u>	<u>E. LOGS</u>	<u>DATUM</u>	<u>A</u>	<u>B</u>	<u>C</u>	<u>D</u>
Anhydrite	1596'	1599'	+ 413	+ 419			
Base	1630'	1632'	+ 380	+ 386			
Topeka	3006'	3006'	- 994	- 988			
Heeb. Sh.	3213'	3214'	-1202	-1194			
Toronto	3236'	3236'	-1224	-1216			
Lansing	3252'	3251'	-1239	-1231			
BKc.	3455'	3454'	-1442	-1434			
Arbuckle	3556'	3557'	-1545	-1529			
TD	3575'	3573'	-1561	-1546			

*Structural position of subject well as compared to referre

7
8

OGY

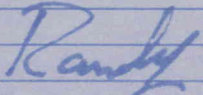
SUMMARY

The Simoneau #1 well was drilled with Discovery Drilling tools rig #4 beginning 11-07-2019 and drilling was completed 11-14-2019.

The drill site was located via a 3-D seismic survey. The well ran high structurally to the dry hole south-east of the drill site. However, the LKc C zone did not develop reservoir quality and the LKc F zone did not trap oil.

Based upon all data, the well was plugged as a dry hole.

Respectfully,



Randall Kilian

REMARKS

LITHOLOGY (LAGGED)

POOR
FAIR
GOOD
DST

DRILLING TIME (min/ft)

1/2 1 2 3 4 5678910

ANH.

L2

ION

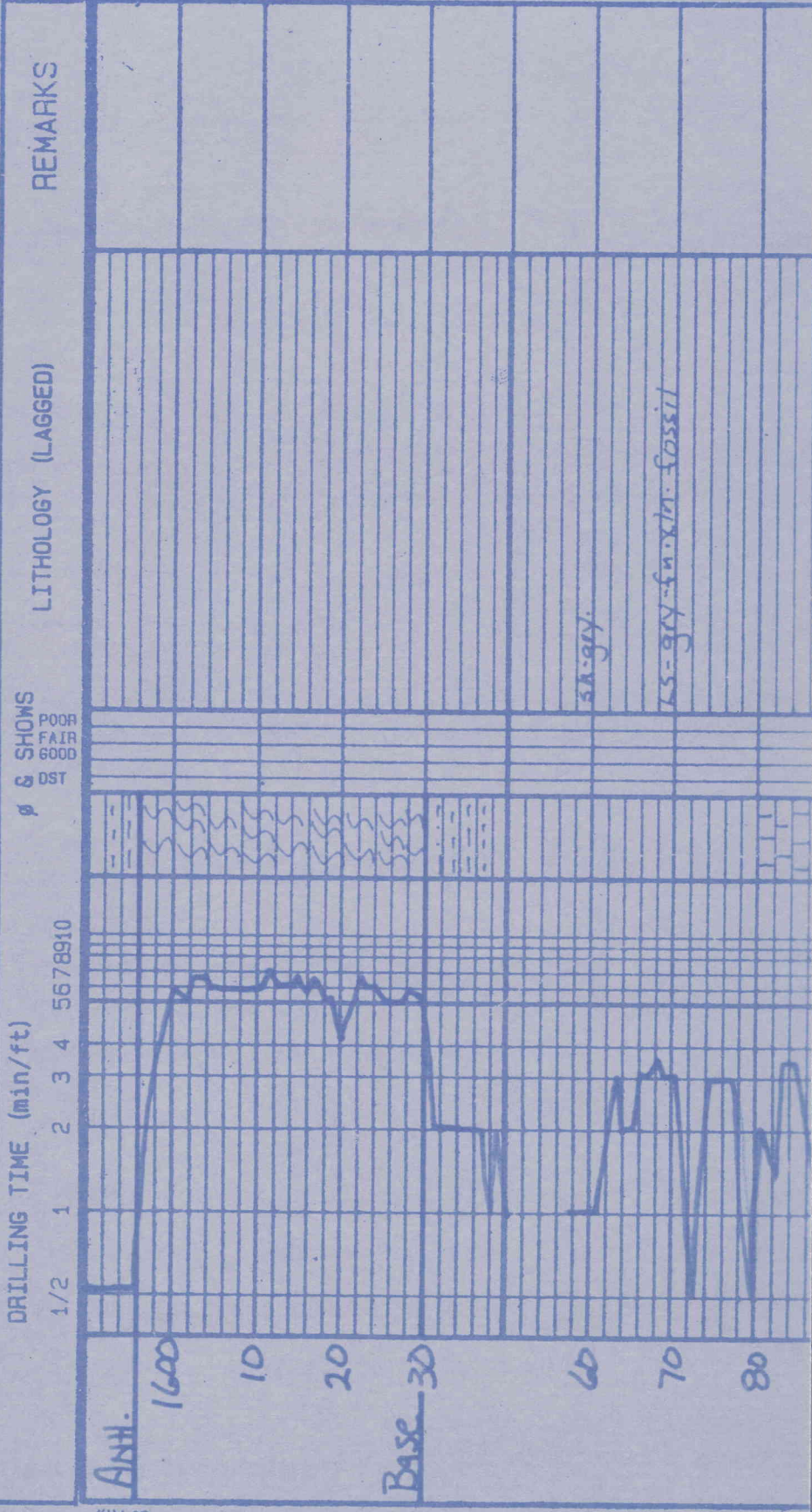
E

d well.

y Drilling
was

urvey.
south-
he did
he did

dry hole.



Anth.

1600

10

20

Base 30

60

70

80

sh. gry.

LS - grey - fm. x m. fossil

sh. sst. - gr. - brn.

LS - lt. gr. - gr. - fn. x ln. fossil

Mud
vis. - 60
wt. - 8.5

sh. - gr.

LS - gr. - fn. x ln. - fossil

sh. & sst. - gr.

sh. - dark gr.

LS - lt. gr. - gr. - fn. x ln. - fossil
sh. - blk. - sh. - gr.

LS - blk.

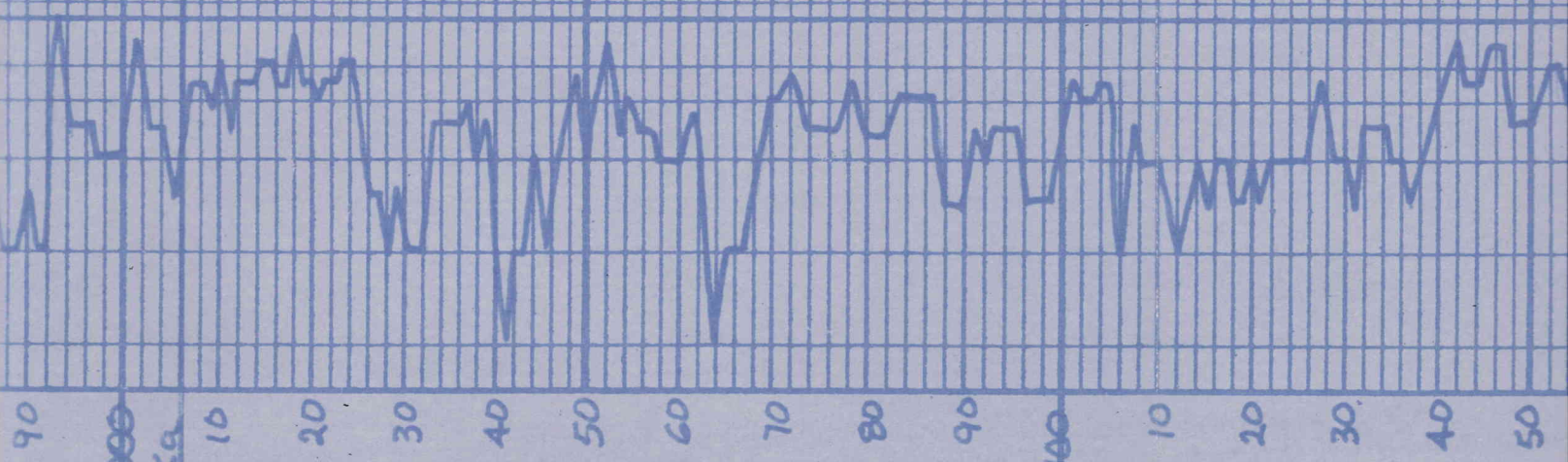
Mud
vis. - 59
wt. - 8.5

sh. - blk. - fossil

sh. - sst. - gr.

sh. - gr. - brn.

LS - brn. - gr. - fn. x ln. - fossil



3000
Topoka

3100

10 20 30 40 50 60 70 80 90 10 20 30 40 50

WT-8.5

stst-gry

sh-gry-brn

LS-brn-gry-fn-xln-fossil

sh-blk carb

LS-offwh-fan-fn-xln-ool
w/good com f. barren

LS-fan-tgry-fn-xln-ool

LS-offwh-fan-fn-xln
fossil ool w/ fr. interpart.
f. sh. chalky

LS-fan-fn-xln-fossil, sh. chalky

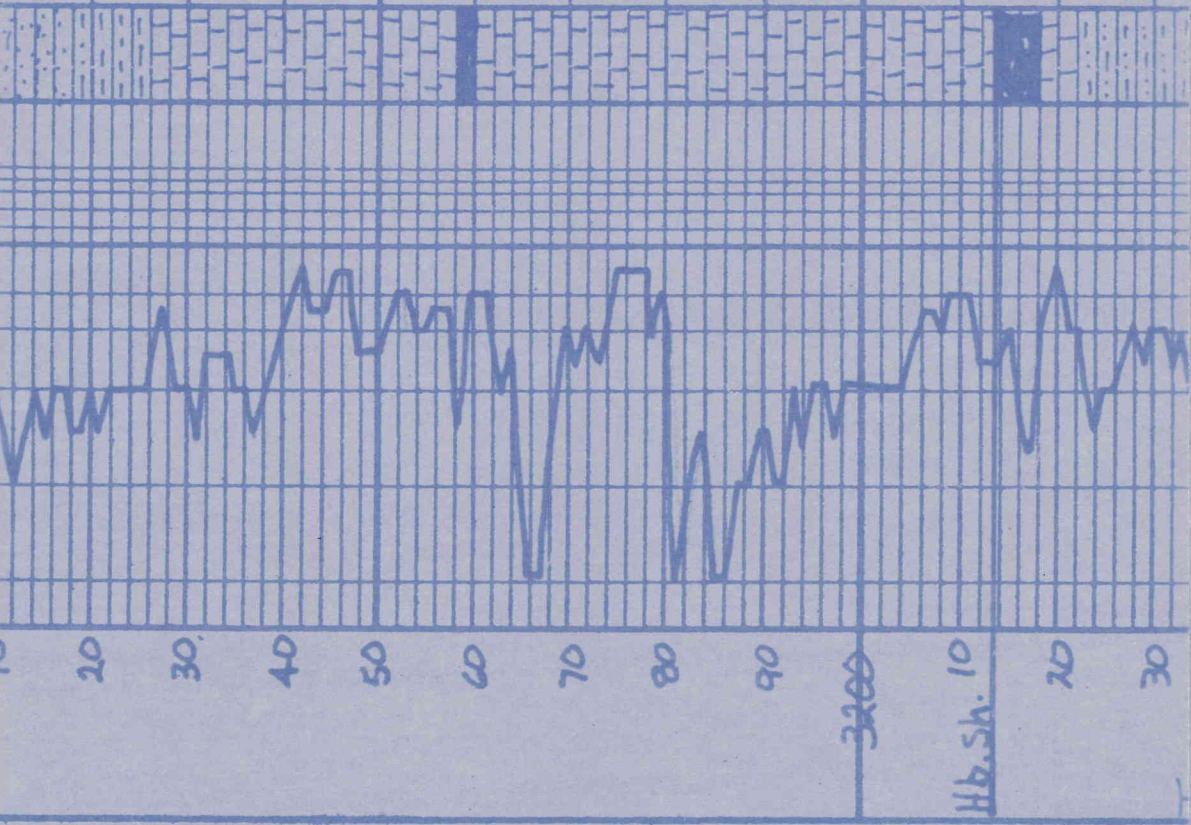
sh-blk fossil, carb

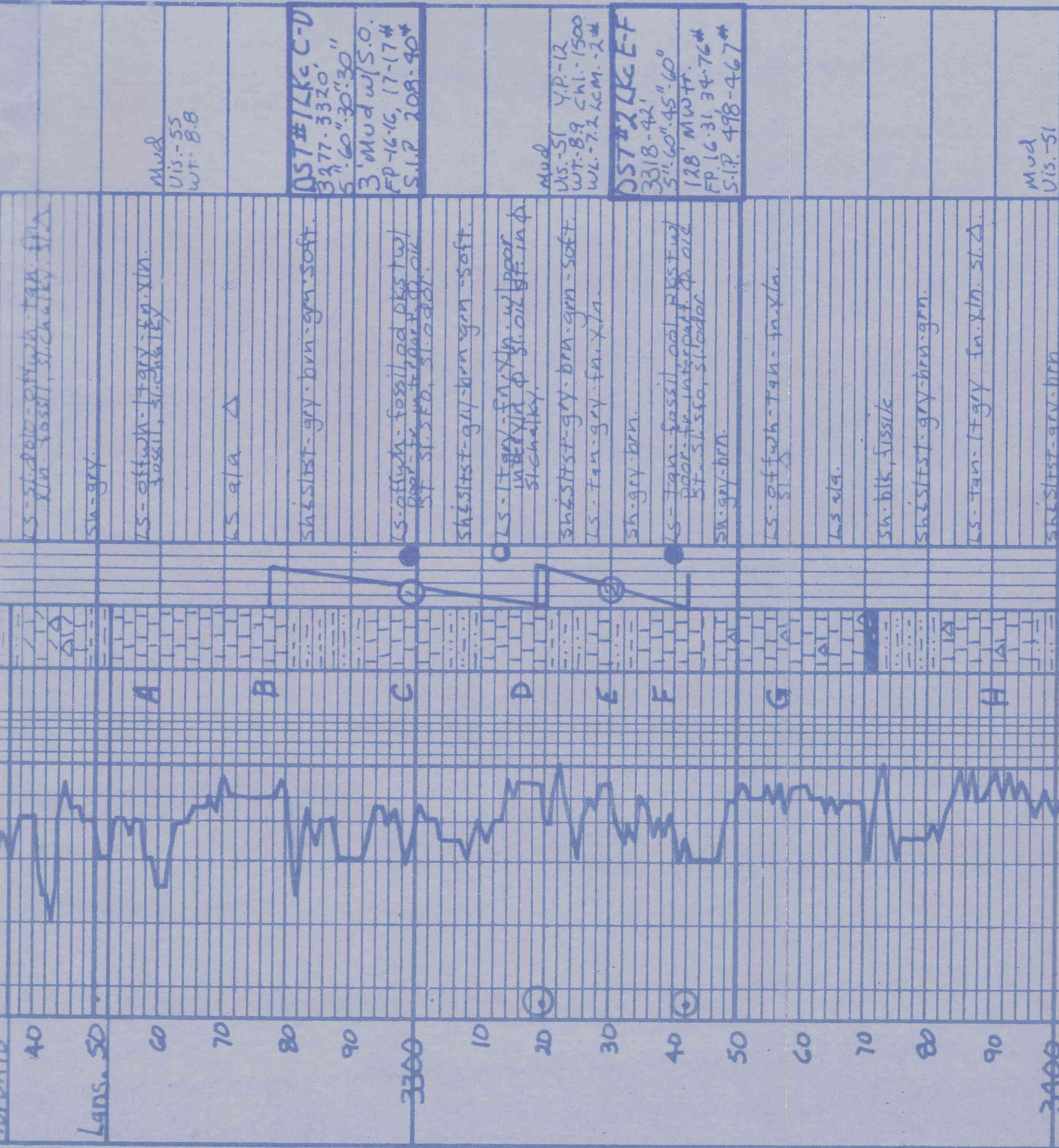
LS-fan-fn-xln

sh-stst-gry-brn-grn

Mud
Vis 51 Y.P 11
wt-8.7 Chl. 1250
WL-63 LCM 3#

geo. on location
1:00pm 11-11-19





LS - silty sh - tan - xln
 xln fossil, sh. chalky. sh.
 sh - gry.

LS - off wh - tan - xln.
 fossil, sh. chalky.

LS sh. Δ

sh. silty - gry - brn - gry - soft.

LS - off wh - fossil and pks tw
 poor - sh. silty sh. oil
 sh. silty sh. oil

sh. silty - gry - brn - gry - soft.

LS - tan - gry - sh. xln. w. poor
 in bed. sh. oil
 sh. chalky.

sh. silty - gry - brn - gry - soft.

LS - tan - gry - sh. xln.

sh - gry - brn.

LS - tan - fossil, oil, pks tw
 poor - sh. silty sh. oil
 sh. silty sh. oil

sh - gry - brn.

LS - off wh - tan - xln.

LS sh.

sh. blk, fissile

sh. silty - gry - brn - gry.

LS - tan - tan - gry - sh. xln. sh. Δ.

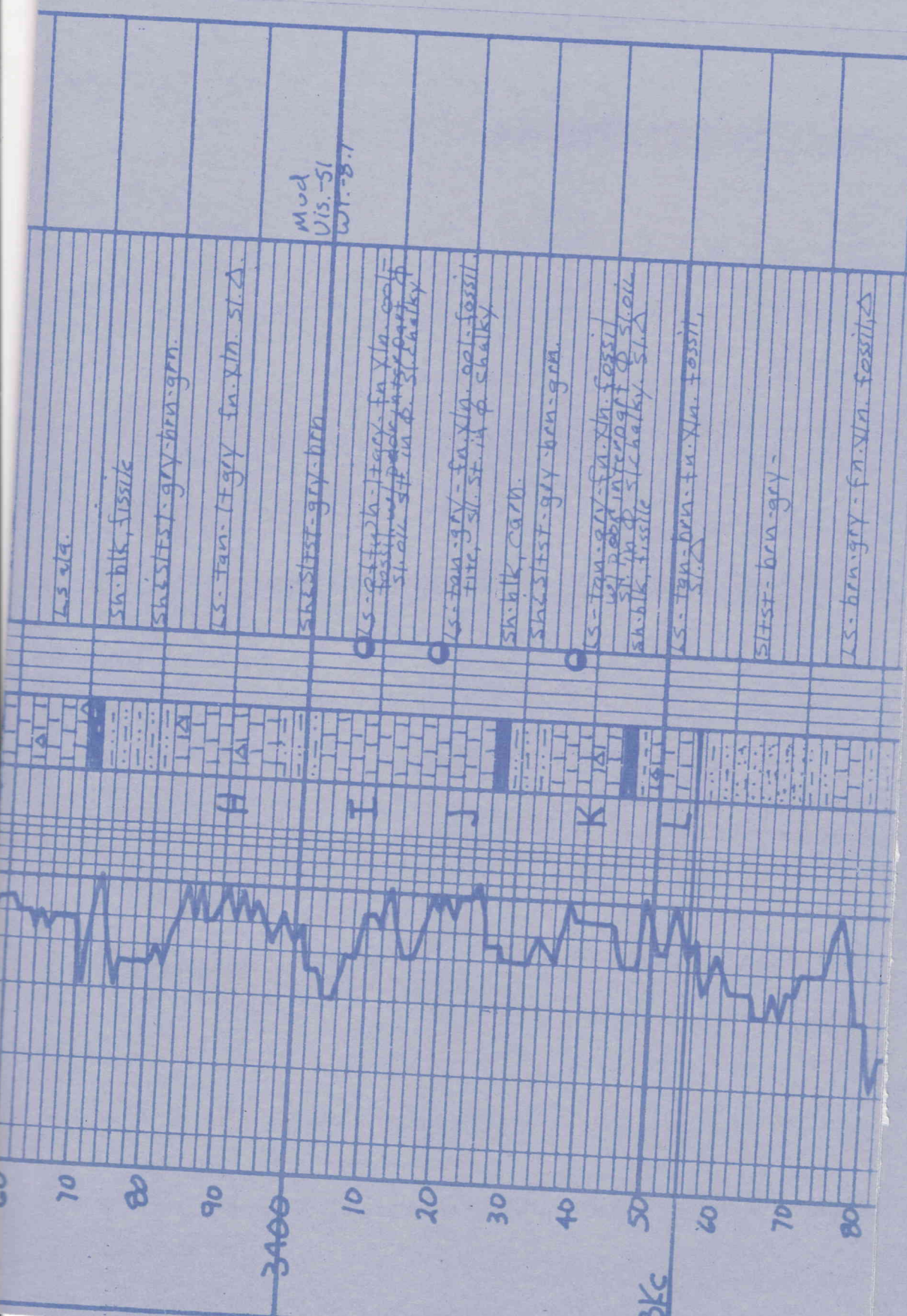
sh. silty - gry - brn

DST # 17K C-D
 3977-3320'
 5'-60" 30" 30"
 3' Mud w/ S.O.
 FP 16-16, 17-17#
 S.I.P. 208-90*

Mud
 US-51 Y.P.-12
 WT-89 C.M.-1500
 WL-7.2 K.M.-2#

DST # 22K E-F
 3318-42'
 5"-60" 45" 60"
 128' Mud wt.
 FP 16-31, 34-76#
 S.I.P. 498-467*

Mud
 US-51



Mud
U.S. - 51
WT - 8.7

LS slg.

sh. blk, fissile

sh. st. st. - grey - brn - grn.

LS - Tan - (T) grey - fn. xln. st. Δ

sh. st. st. - grey - brn

LS - Tan - grey - fn. xln. opal - fossiliferous, sh. blk, carb.

LS - Tan - grey - fn. xln. opal - fossiliferous, sh. blk, carb.

sh. blk, carb.

sh. st. st. - grey - brn - grn.

LS - Tan - grey - fn. xln. opal - fossiliferous, sh. blk, carb.

LS - Tan - brn - fn. xln. fossiliferous, sh. blk, carb.

st. st. - brn - grey -

LS - brn - grey - fn. xln. fossiliferous, sh. blk, carb.

▷

sh2stst-brn-grn-grn soft

LS-brn-grn-fn-xln Δ

sh2stst-grn-grn-brn-grn soft

Sg: Δ V multicolor

sh2stst-brn-grn-grn soft

Med
UIS-49
WT-8.7

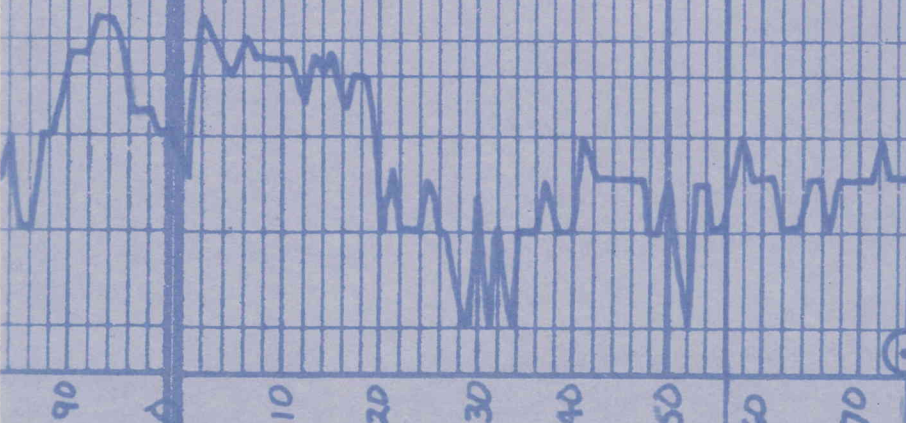
Rechecked data

sh2stst-brn-red-soft

Dato-brn-fn-xln barren Δ

Dato-wh-brn-fn-wed xln
dead etc st in p

Mud
UIS-53
WT-9.1
WH-8.2



T.D. 8:00 am
11-13-2019

3500

Arb.

T.D.