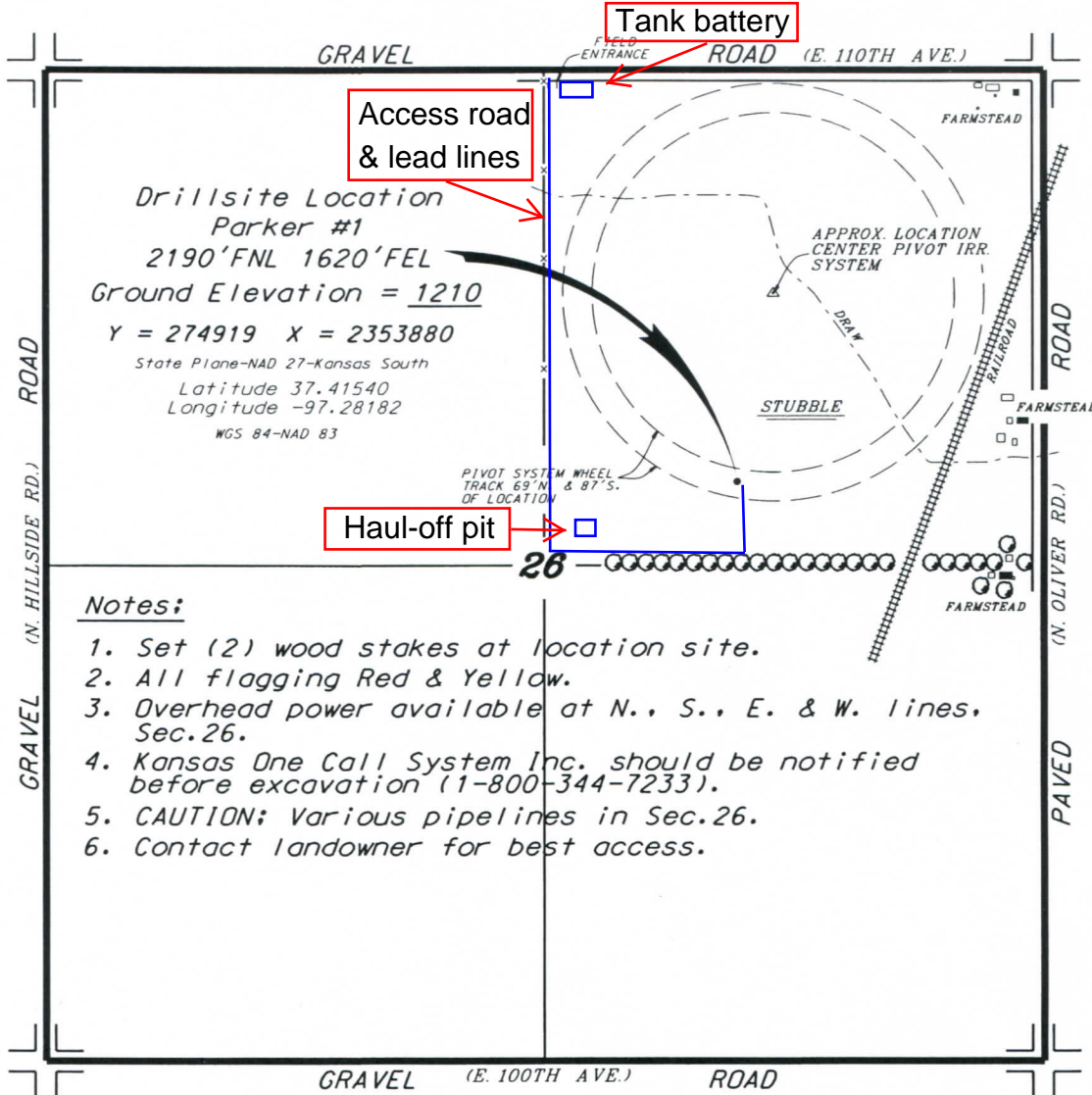


WOOLSEY OPERATING COMPANY, LLC
 PARKER LEASE
 NE. 1/4, SECTION 26, T30S, R1E
 SUMNER COUNTY, KANSAS



Drillsite Location
 Parker #1
 2190'FNL 1620'FEL
 Ground Elevation = 1210
 Y = 274919 X = 2353880
 State Plane-NAD 27-Kansas South
 Latitude 37.41540
 Longitude -97.28182
 WGS 84-NAD 83

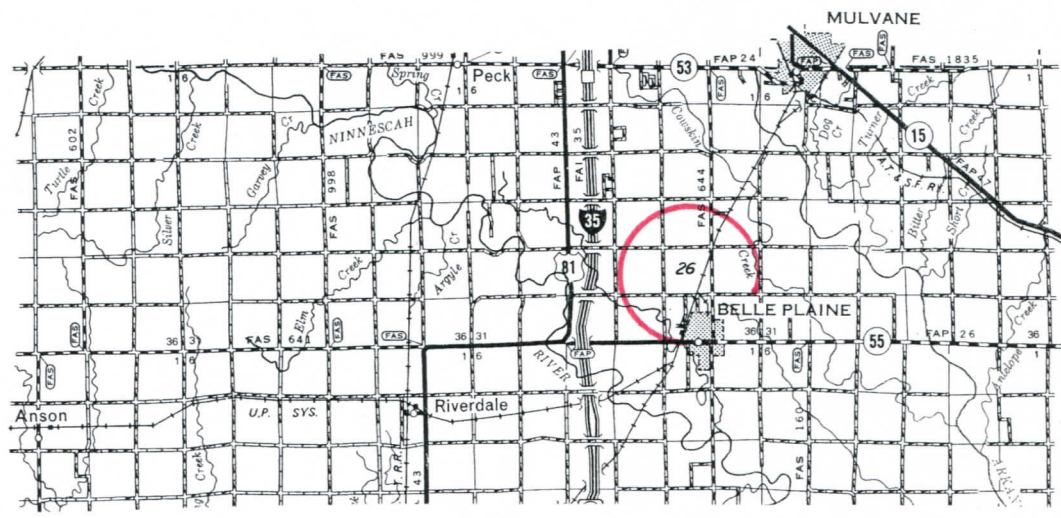
Access road
& lead lines

Haul-off pit

Notes:

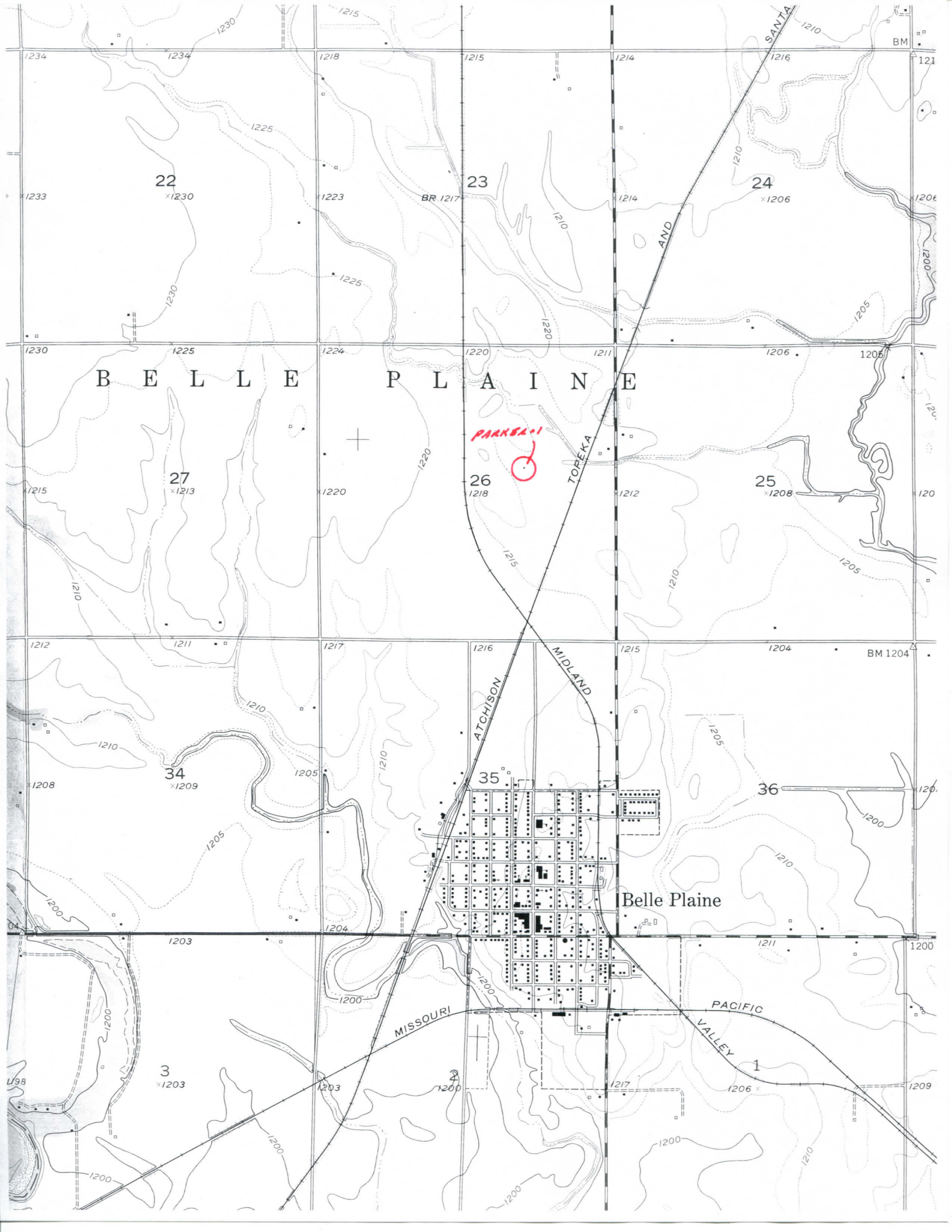
1. Set (2) wood stakes at location site.
2. All flagging Red & Yellow.
3. Overhead power available at N., S., E. & W. lines, Sec. 26.
4. Kansas One Call System Inc. should be notified before excavation (1-800-344-7233).
5. CAUTION; Various pipelines in Sec. 26.
6. Contact landowner for best access.

*Ingress and egress to location as shown on this plat is per usage only and may not be legally opened for public use. Contact landowner, tenant and county road department for access.



Controlling data is based upon the best maps and photographs available to us and upon a regular section of land containing 640 acres.
 Approximate section lines were determined using the normal standard of care of oilfield surveyors practicing in the state of Kansas. The section corners, which establish the precise section lines, were not necessarily located, and the exact location of the drillsite location in the section is not guaranteed. Therefore, the operator securing this service and accepting this plat and all other parties relying thereon agree to hold Central Kansas Oilfield Services, Inc., its officers and employees harmless from all losses, costs and expenses and said entities released from any liability from incidental or consequential damages.
 Elevations derived from National Geodetic Vertical Datum.

Date December 19, 2019



BELLE PLAINE

PARKS-1

22
x1230

23
BR 1217

24
x1206

27
x1213

26
1218

25
x1208

34
x1209

35

36

3
x1203

1
1206

Belle Plaine

MISSOURI

PACIFIC VALLEY

ATCHISON

MIDLAND

SANTA FE

AND

TOROKA