

KANSAS CORPORATION COMMISSION
OIL & GAS CONSERVATION DIVISION

TEMPORARY ABANDONMENT WELL APPLICATION

OPERATOR: License# _____
 Name: _____
 Address 1: _____
 Address 2: _____
 City: _____ State: _____ Zip: _____ + _____
 Contact Person: _____
 Phone: (_____) _____
 Contact Person Email: _____
 Field Contact Person: _____
 Field Contact Person Phone: (_____) _____

API No. 15- _____
 Spot Description: _____
 _____ - _____ - _____ - _____ Sec. _____ Twp. _____ S. R. _____ E W
 _____ feet from N / S Line of Section
 _____ feet from E / W Line of Section
 GPS Location: Lat: _____, Long: _____
(e.g. xx.xxxxx) (e.g. -xxx.xxxxx)
 Datum: NAD27 NAD83 WGS84
 County: _____ Elevation: _____ GL KB
 Lease Name: _____ Well #: _____
 Well Type: (check one) Oil Gas OG WSW Other: _____
 SWD Permit #: _____ ENHR Permit #: _____
 Gas Storage Permit #: _____
 Spud Date: _____ Date Shut-In: _____

| | Conductor | Surface | Production | Intermediate | Liner | Tubing |
|------------------|-----------|---------|------------|--------------|-------|--------|
| Size | | | | | | |
| Setting Depth | | | | | | |
| Amount of Cement | | | | | | |
| Top of Cement | | | | | | |
| Bottom of Cement | | | | | | |

Casing Fluid Level from Surface: _____ How Determined? _____ Date: _____
 Casing Squeeze(s): _____ to _____ w / _____ sacks of cement, _____ to _____ w / _____ sacks of cement. Date: _____
(top) (bottom) (top) (bottom)
 Do you have a valid Oil & Gas Lease? Yes No
 Depth and Type: Junk in Hole at _____ Tools in Hole at _____ Casing Leaks: Yes No Depth of casing leak(s): _____
(depth) (depth)
 Type Completion: ALT. I ALT. II Depth of: DV Tool: _____ w / _____ sacks of cement Port Collar: _____ w / _____ sack of cement
(depth) (depth)
 Packer Type: _____ Size: _____ Inch Set at: _____ Feet
 Total Depth: _____ Plug Back Depth: _____ Plug Back Method: _____

Geological Data:

| Formation Name | Formation Top | Formation Base | Completion Information |
|----------------|---------------|----------------|--|
| 1. _____ | At: _____ | to _____ Feet | Perforation Interval _____ to _____ Feet or Open Hole Interval _____ to _____ Feet |
| 2. _____ | At: _____ | to _____ Feet | Perforation Interval _____ to _____ Feet or Open Hole Interval _____ to _____ Feet |

UNDER PENALTY OF PERJURY I HEREBY ATTEST THAT THE INFORMATION CONTAINED HEREIN IS TRUE AND CORRECT TO THE BEST OF MY KNOWLEDGE

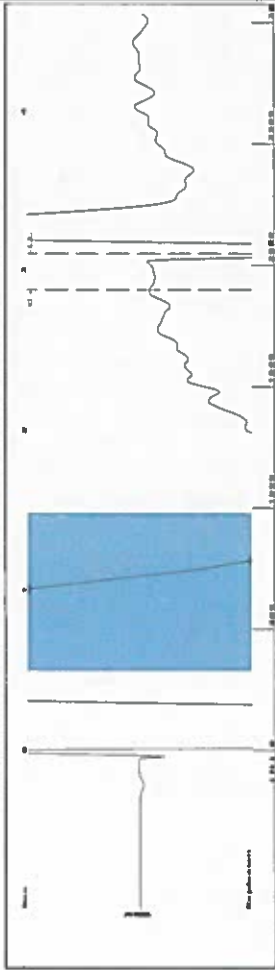
Submitted Electronically

| | | | | | |
|---|--|----------------|---------------------|----------------------|---------------------------------|
| Do NOT Write in This Space - KCC USE ONLY | Date Tested: _____ | Results: _____ | Date Plugged: _____ | Date Repaired: _____ | Date Put Back in Service: _____ |
| | Review Completed by: _____ Comments: _____ | | | | |
| TA Approved: <input type="checkbox"/> Yes <input type="checkbox"/> Denied Date: _____ | | | | | |

Mail to the Appropriate KCC Conservation Office:

| | | |
|--|--|--------------------|
|  | KCC District Office #1 - 210 E. Frontview, Suite A, Dodge City, KS 67801 | Phone 620.682.7933 |
| | KCC District Office #2 - 3450 N. Rock Road, Building 600, Suite 601, Wichita, KS 67226 | Phone 316.337.7400 |
| | KCC District Office #3 - 137 E. 21st St., Chanute, KS 66720 | Phone 620.902.6450 |
| | KCC District Office #4 - 2301 E. 13th Street, Hays, KS 67601-2651 | Phone 785.261.6250 |

Group: SUBLETTE Well: VMLU 401 (acquired on: 01/21/20 10:33:41)



Filter Type High Pass Automatic Collar Count Yes
 Manual Acoustic Velo 301.85 ft/s Manual JTS/sec 20.5339
 Time 3.114 sec
 Joints 64.576 Jts
 Depth 2047.06 ft

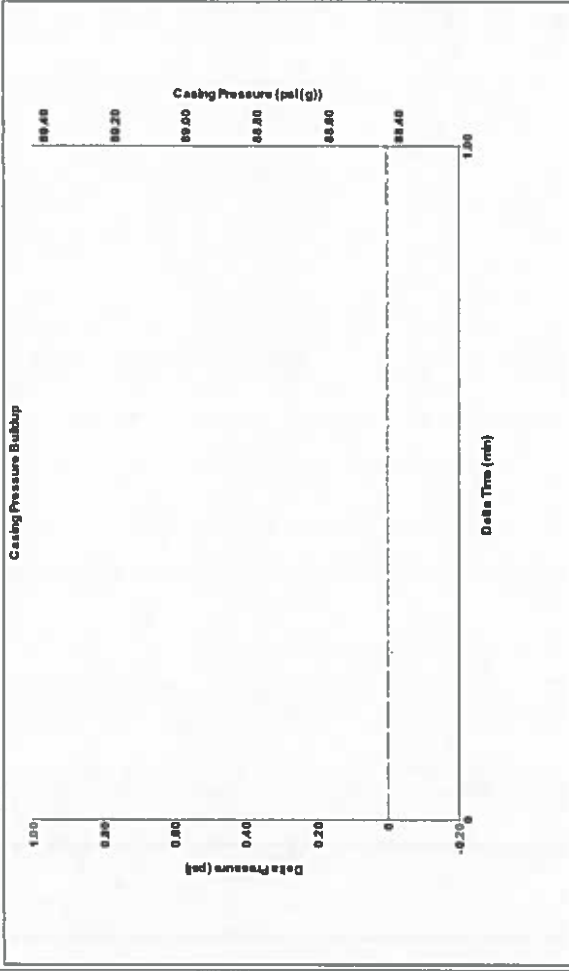


Analysis Method: Automatic

Group: SUBLETTE Well: VMLU 401 (acquired on: 01/21/20 10:33:41)

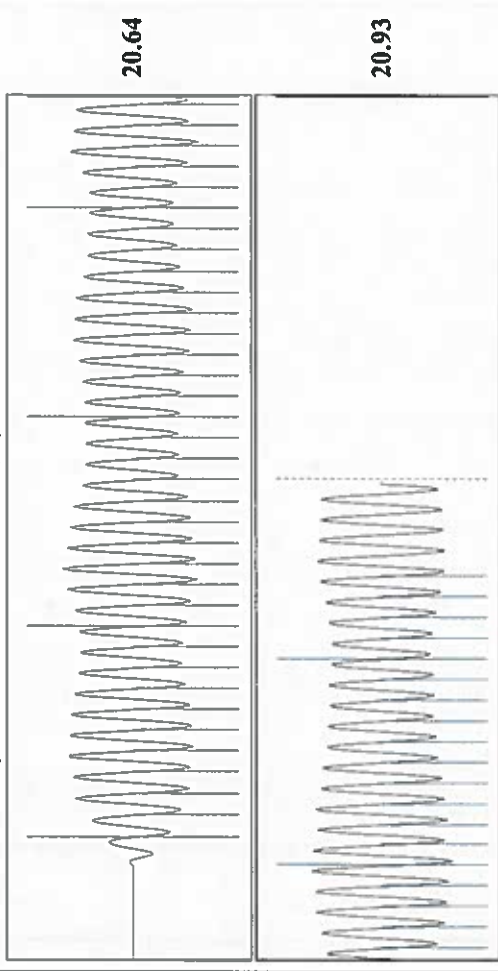
| | | | |
|---------------------------------------|-------------------------------|-----------------|-------------------------------|
| Production Current | Potential | Casing Pressure | Producing |
| Oil 40 deg-API | 88.4 psi (g) | 0.0 psi | Annular Gas Flow 0 Mscf/D |
| Water 1.05 Sp.Gr:H2O | 0.0 psi | 1.00 min | % Liquid 100 % |
| Gas 0.66 Sp.Gr:AIR | Gas/Liquid Interface Pressure | 93.5 psi (g) | Pump Intake 1144.7 psi (g) |
| IPR Method Vogel | Liquid Level Depth | 2047.06 ft | Producing BHIP 1135.4 psi (g) |
| Production Efficiency 0.0 | Pump Intake Depth | 5274.00 ft | Static BHIP - - - psi (g) |
| Acoustic Velocity 1314.75 ft/s | Formation Depth | 5244.00 ft | |
| Formation Submergence | | | |
| Total Gaseous Liquid Column HIT (TVD) | | | |
| Equivalent Gas Free Liquid HIT (TVD) | | | |
| 1/21/2020 | | | |

Group: SUBLETTE Well: VMLU 401 (acquired on: 01/21/20 10:33:41)



Change in Pressure 0.01 psi
 Change in Time 1.00 min
 PT16716 Range

Group: SUBLETTE Well: VMLU 401 (acquired on: 01/21/20 10:33:41)



Acoustic Velocity 1314.75 ft/s
 Joints Per Second 20.7373 jts/sec
 Depth to liquid level 2047.06 ft
 Automatic Collar Count Yes
 Joints counted 54
 Joints to liquid level 64.576
 Filler Width 18.5339
 Time to 1st Collar 0.284

February 04, 2020

Katherine McClurkan
Merit Energy Company, LLC
13727 Noel Road, Suite 1200
Dallas, TX 75240

Re: Temporary Abandonment
API 15-081-20932-00-00
Victory Morrow Lime Unit 401
NW/4 Sec.33-30S-33W
Haskell County, Kansas

Dear Katherine McClurkan:

"Your temporary abandonment (TA) application for the well listed above has been approved. In accordance with K.A.R. 82-3-111 the TA status of this well will expire 02/04/2021.

- * If you return this well to service or plug it, please notify the District Office.
- * If you sell this well you are required to file a Transfer of Operator form, T-1.
- * If the well will remain temporarily abandoned, you must submit a new TA application, CP-111, before 02/04/2021.

You may contact me at the number above if you have questions.

Very truly yours,

Michael Maier"