

KANSAS CORPORATION COMMISSION
OIL & GAS CONSERVATION DIVISION

Form must be Typed

Form must be signed

All blanks must be complete

TEMPORARY ABANDONMENT WELL APPLICATION

OPERATOR: License# _____

Name: _____

Address 1: _____

Address 2: _____

City: _____ State: _____ Zip: _____ + _____

Contact Person: _____

Phone: (_____) _____

Contact Person Email: _____

Field Contact Person: _____

Field Contact Person Phone: (_____) _____

API No. 15- _____

Spot Description: _____

____ - ____ - ____ - ____ Sec. _____ Twp. _____ S. R. _____ ☐ E ☐ W_____ feet from ☐ N / ☐ S Line of Section_____ feet from ☐ E / ☐ W Line of Section

GPS Location: Lat: _____, Long: _____

(e.g. xx.xxxxx)

Datum: ☐ NAD27 ☐ NAD83 ☐ WGS84

(e.g. -xxx.xxxxx)

County: _____ Elevation: _____ ☐ GL ☐ KB

Lease Name: _____ Well #: _____

Well Type: (check one) ☐ Oil ☐ Gas ☐ OG ☐ WSW ☐ Other: _____☐ SWD Permit #: _____ ☐ ENHR Permit #: _____☐ Gas Storage Permit #: _____

Spud Date: _____ Date Shut-In: _____

	Conductor	Surface	Production	Intermediate	Liner	Tubing
Size						
Setting Depth						
Amount of Cement						
Top of Cement						
Bottom of Cement						

Casing Fluid Level from Surface: _____ How Determined? _____ Date: _____

Casing Squeeze(s): _____ to _____ w / _____ sacks of cement, _____ to _____ w / _____ sacks of cement. Date: _____
(top) (bottom) (top) (bottom)Do you have a valid Oil & Gas Lease? ☐ Yes ☐ NoDepth and Type: ☐ Junk in Hole at _____ ☐ Tools in Hole at _____ Casing Leaks: ☐ Yes ☐ No Depth of casing leak(s): _____
(depth) (depth)Type Completion: ☐ ALT. I ☐ ALT. II Depth of: ☐ DV Tool: _____ w / _____ sacks of cement ☐ Port Collar: _____ w / _____ sack of cement
(depth) (depth)

Packer Type: _____ Size: _____ Inch Set at: _____ Feet

Total Depth: _____ Plug Back Depth: _____ Plug Back Method: _____

Geological Data:

Formation Name	Formation Top	Formation Base	Completion Information
1. _____	At: _____ to _____ Feet	Perforation Interval _____ to _____ Feet or Open Hole Interval _____ to _____ Feet	
2. _____	At: _____ to _____ Feet	Perforation Interval _____ to _____ Feet or Open Hole Interval _____ to _____ Feet	

UNDER PENALTY OF PERJURY I HEREBY ATTEST THAT THE INFORMATION CONTAINED HEREIN IS TRUE AND CORRECT TO THE BEST OF MY KNOWLEDGE

Submitted Electronically

**Do NOT Write in This
Space - KCC USE ONLY**

Date Tested: _____ Results: _____ Date Plugged: _____ Date Repaired: _____ Date Put Back in Service: _____

Review Completed by: _____ Comments: _____

TA Approved: ☐ Yes ☐ Denied Date: _____

Mail to the Appropriate KCC Conservation Office:

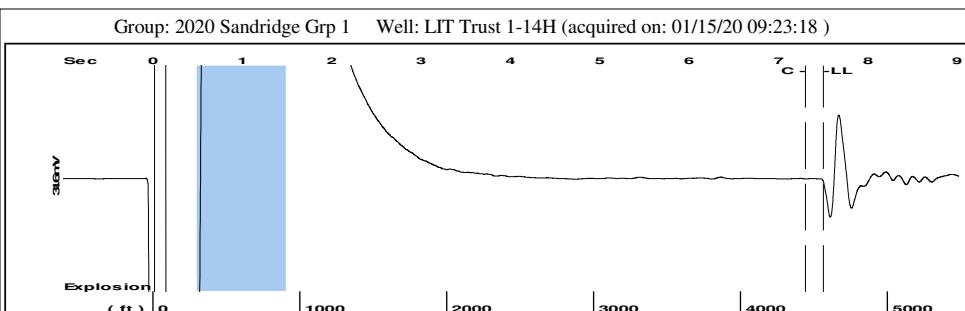
	KCC District Office #1 - 210 E. Frontview, Suite A, Dodge City, KS 67801	Phone 620.682.7933
	KCC District Office #2 - 3450 N. Rock Road, Building 600, Suite 601, Wichita, KS 67226	Phone 316.337.7400
	KCC District Office #3 - 137 E. 21st St., Chanute, KS 66720	Phone 620.902.6450
	KCC District Office #4 - 2301 E. 13th Street, Hays, KS 67601-2651	Phone 785.261.6250

General		
Well ID	120527	
Well	LIT Trust 1-14H	
Company	Sandridge	
Operator	- * -	
Lease Name	LIT Trust 1-14H	
Elevation	1258.00	ft
Production Method	Other	
Dataset Description	Lit Trust 1-14H 1-15-20	
Comment		

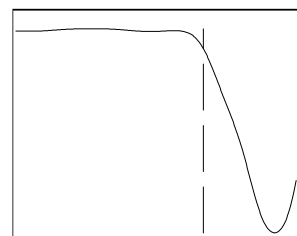
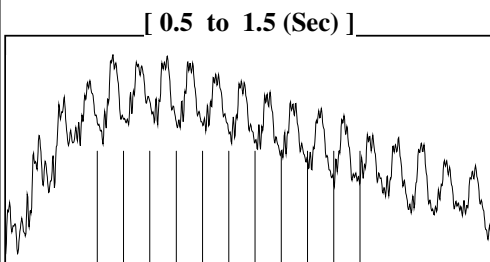
Surface Unit		
Manufacturer	- * -	
Unit Class	Conventional	
Unit API Number	- * -	
Measured Stroke Length	100.000	in
Rotation	CW	
Counter Balance Effect (Weights Level)	- * -	Klb
Weight Of Counter Weights	2000	lb
Prime Mover		
Motor Type	Electric	
Rated HP	- * -	HP
Run Time	24	hr/day
MFG/Comment	- * -	
Electric Motor Parameters		
Rated Full Load AMPS	- * -	
Rated Full Load RPM	- * -	
Synchronous RPM	1200	
Voltage	- * -	
Hertz	60	
Phase	3	
Power Consumption	5	
Power Demand	8	\$/KW

Tubulars			Pump			
Tubing OD	2.875	in	Plunger Diameter	- * -	in	
Casing OD	7.000	in	Pump Intake Depth	4836.00	ft	
Average Joint Length	31.500	ft	**Total Rod Length < Pump Depth			
Anchor Depth	- * -	ft				
Kelly Bushing	20.00	ft				
Rod String			Polished Rod			
			Polished Rod Diameter	- * -	in	
	Top Taper	Taper 2	Taper 3	Taper 4	Taper 5	Taper 6
Rod Type	- * -	- * -	- * -	- * -	- * -	- * -
Rod Length	- * -	- * -	- * -	- * -	- * -	- * - ft
Rod Diameter	- * -	- * -	- * -	- * -	- * -	- * - in
Rod Weight	0.0	0.0	0.0	0.0	0.0	0.0 lb
Total Rod Length	0					
Total Rod Weight	0.00					
Damp Up	0.05					
Damp Down	0.05					

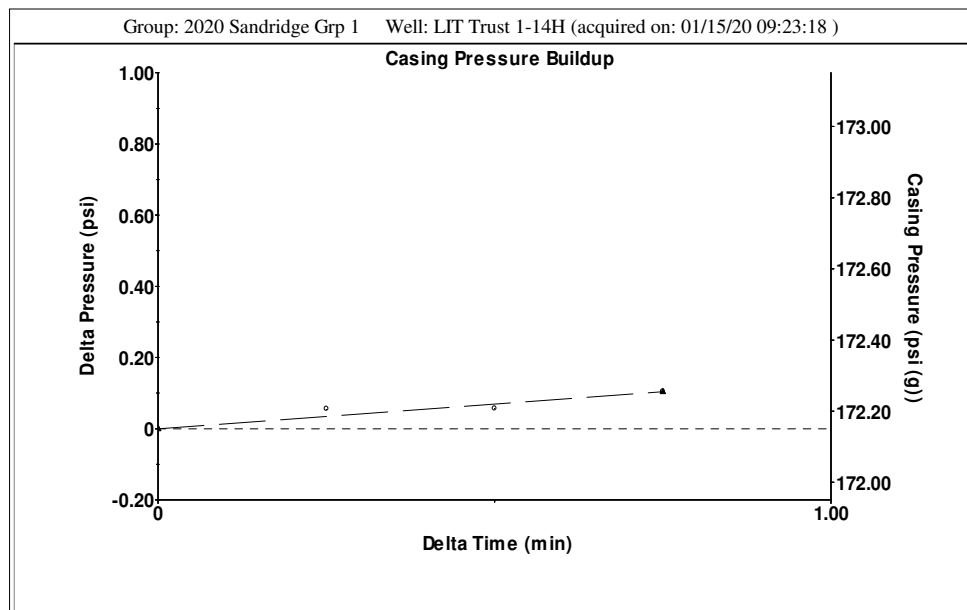
Conditions					
Pressure		Production			
Static BHP	526.0	psi (g)	Oil Production	0	BBL/D
Static BHP Method	Acoustic		Water Production	1	BBL/D
Static BHP Date	12/07/2016		Gas Production	- * -	Mscf/D
			Production Date	12/06/2016	
Producing BHP	471.7	psi (g)	Temperatures		
Producing BHP Method	Acoustic		Surface Temperature	70	deg F
Producing BHP Date	01/15/2020		Bottomhole Temperature	150	deg F
Formation Depth	5310.00	ft			
Surface Producing Pressures					
Tubing Pressure	- * -	psi (g)	Fluid Properties		
Casing Pressure	172.2	psi (g)	Oil API	40	deg.API
			Water Specific Gravity	1.05	Sp.Gr.H2O
Casing Pressure Buildup					
Change in Pressure	0.1	psi			
Over Change in Time	0.75	min			



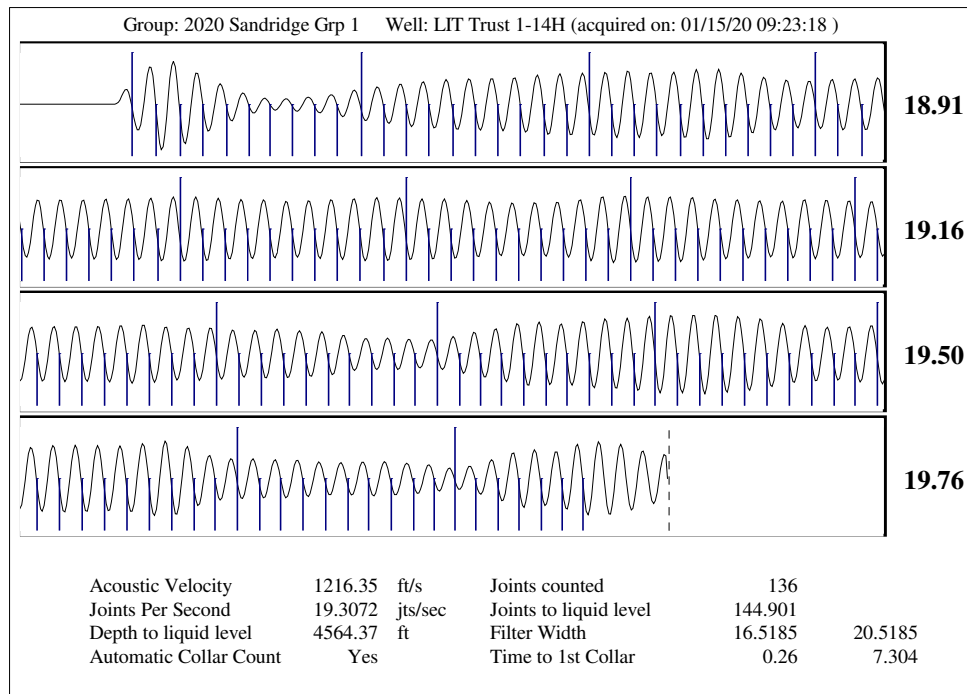
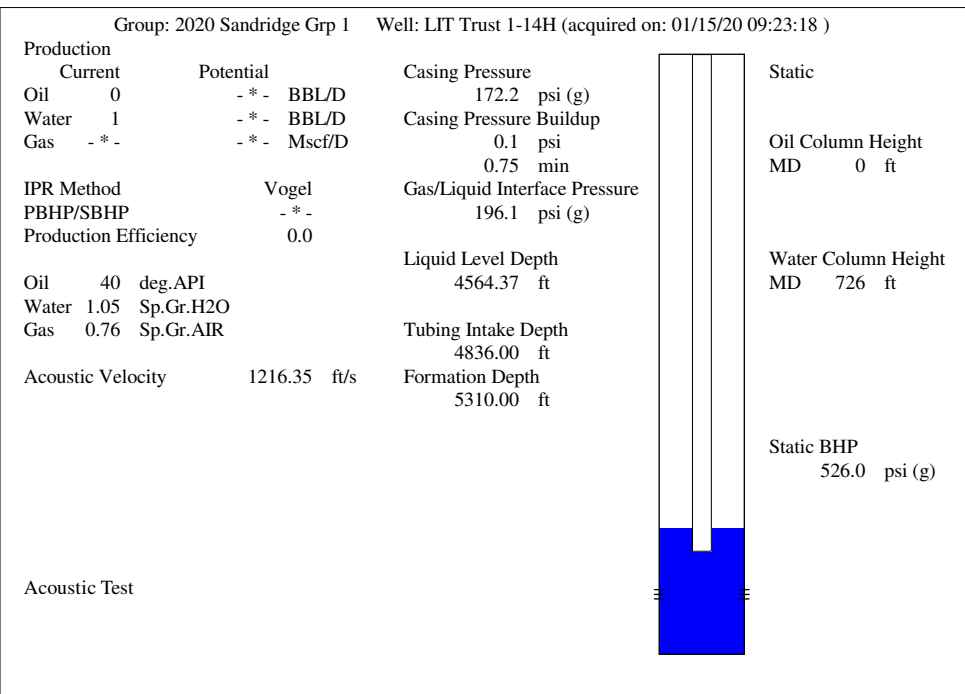
Filter Type High Pass Automatic Collar Count Yes Time 7.505 sec
Manual Acoustic Veloc 1166.67 ft/s Manual JTS/sec 18.5185 Joints 144.901 Jts
Depth 4564.37 ft



Analysis Method: Automatic



Change in Pressure 0.10 psi PT16722
Change in Time 0.75 min Range 0 - ? psi



February 10, 2020

Diane Overbey
SandRidge Exploration and Production LLC
123 ROBERT S. KERR AVE
OKLAHOMA CITY, OK 73102-6406

Re: Temporary Abandonment
API 15-077-21796-01-00
LIT TRUST 1-14H
SW/4 Sec.14-35S-08W
Harper County, Kansas

Dear Diane Overbey:

"Your temporary abandonment (TA) application for the well listed above has been approved. In accordance with K.A.R. 82-3-111 the TA status of this well will expire 02/10/2021.

- * If you return this well to service or plug it, please notify the District Office.
- * If you sell this well you are required to file a Transfer of Operator form, T-1.
- * If the well will remain temporarily abandoned, you must submit a new TA application, CP-111, before 02/10/2021.

You may contact me at the number above if you have questions.

Very truly yours,

Steve VanGieson"