

KANSAS CORPORATION COMMISSION
OIL & GAS CONSERVATION DIVISION

Form must be Typed
Form must be signed

TEMPORARY ABANDONMENT WELL APPLICATION

All blanks must be complete

OPERATOR: License#
Name:
Address 1:
Address 2:
City: State: Zip:
Contact Person:
Phone:
Contact Person Email:
Field Contact Person:
Field Contact Person Phone:

API No. 15-
Spot Description:
Sec. Twp. S. R.
GPS Location: Lat: Long:
Datum: NAD27 NAD83 WGS84
County: Elevation:
Lease Name: Well #:
Well Type: Oil Gas OG WSW Other:
SWD Permit #: ENHR Permit #:
Gas Storage Permit #:
Spud Date: Date Shut-In:

Table with 7 columns: Conductor, Surface, Production, Intermediate, Liner, Tubing. Rows include Size, Setting Depth, Amount of Cement, Top of Cement, Bottom of Cement.

Casing Fluid Level from Surface: How Determined? Date:
Casing Squeeze(s): to w / sacks of cement, to w / sacks of cement. Date:
Do you have a valid Oil & Gas Lease? Yes No
Depth and Type: Junk in Hole at Tools in Hole at Casing Leaks: Yes No Depth of casing leak(s):
Type Completion: ALT. I ALT. II Depth of: DV Tool: w / sacks of cement Port Collar: w / sack of cement
Packer Type: Size: Inch Set at: Feet
Total Depth: Plug Back Depth: Plug Back Method:

Geological Data:

Table with 4 columns: Formation Name, Formation Top, Formation Base, Completion Information. Rows 1 and 2.

UNDER PENALTY OF PERJURY I HEREBY ATTEST THAT THE INFORMATION CONTAINED HEREIN IS TRUE AND CORRECT TO THE BEST OF MY KNOWLEDGE

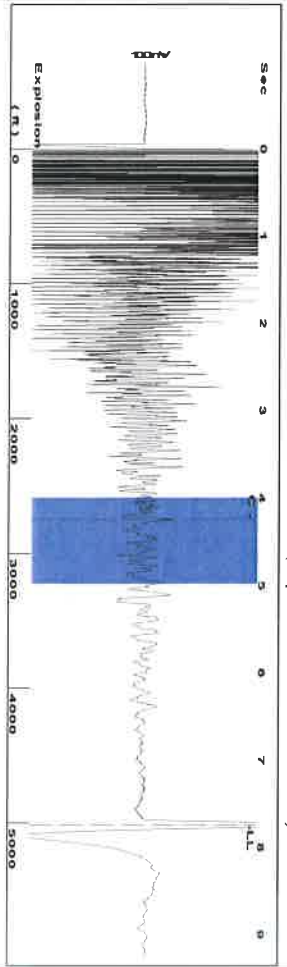
Submitted Electronically

Do NOT Write in This Space - KCC USE ONLY
Date Tested: Results: Date Plugged: Date Repaired: Date Put Back in Service:
Review Completed by: Comments:
TA Approved: Yes Denied Date:

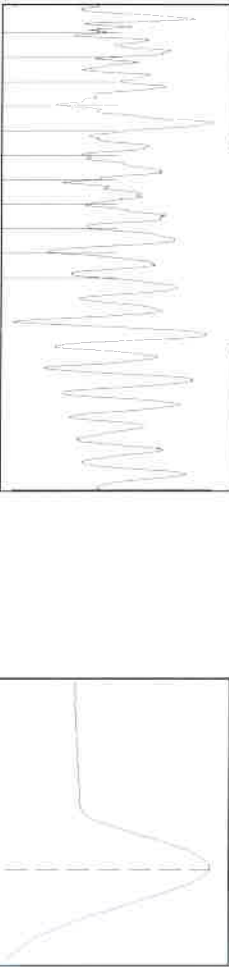
Mail to the Appropriate KCC Conservation Office:

Table with 3 columns: District Office #, Address, Phone. Rows 1-4.

Group: SIERRA MADRE Well: SMITH UNRUH 1 (acquired on: 02/05/20 13:15:27)



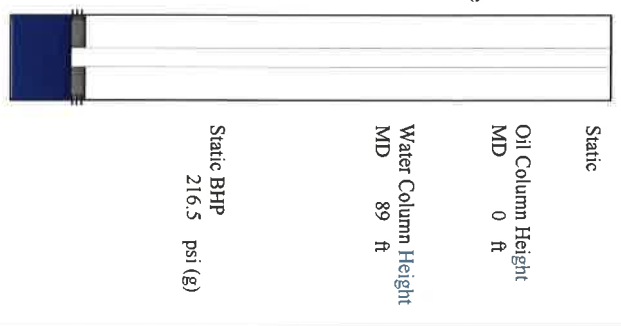
Filter Type High Pass Automatic Collar Count Yes
 Manual Acoustic Velo 1255.45 ft/s Manual JTS/sec 19.802
 Time 7.739 sec
 Joints 158.138 Jts
 Depth 5012.97 ft



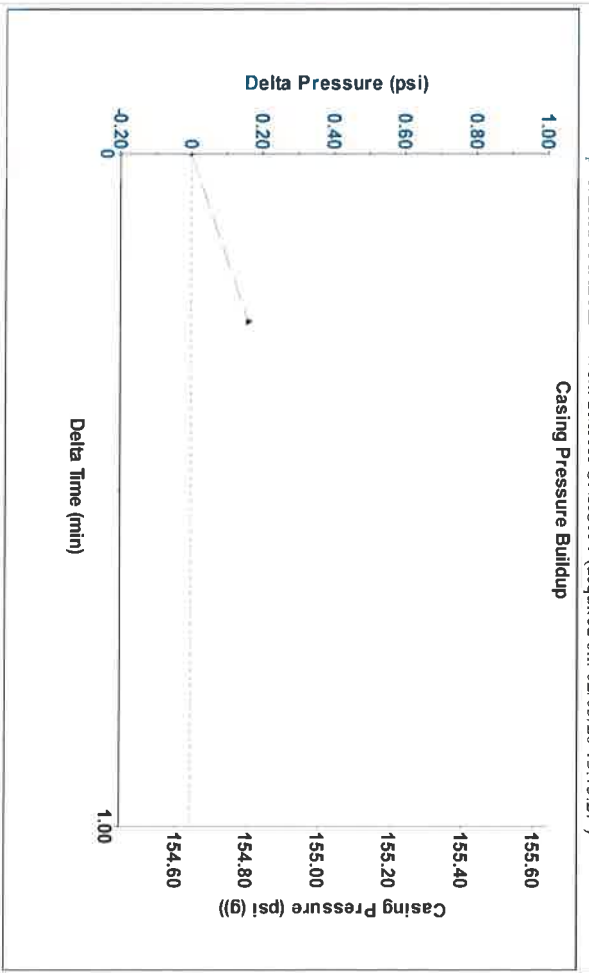
Analysis Method: Automatic

Group: SIERRA MADRE Well: SMITH UNRUH 1 (acquired on: 02/05/20 13:15:27)

Production	Potential	Casing Pressure	Static
Oil -*- BBL/D	-*- BBL/D	154.6 psi (g)	Oil Column Height
Water -*- BBL/D	-*- BBL/D	0.2 psi	MD 0 ft
Gas -*- Mscf/D	-*- Mscf/D	0.25 min	
IPR Method	Vogel -*-	Gas/Liquid Interface Pressure	
PBHP/SBHP	0.0	176.0 psi (g)	
Production Efficiency			
Oil 40 deg API		Liquid Level Depth	Water Column Height
Water 1.05 Sp.Gr:H2O		5012.97 ft	MD 89 ft
Gas 0.70 Sp.Gr:AIR		Pump Intake Depth	
Acoustic Velocity	1295.51 ft/s	5170.00 ft	
		Formation Depth	
		5102.00 ft	

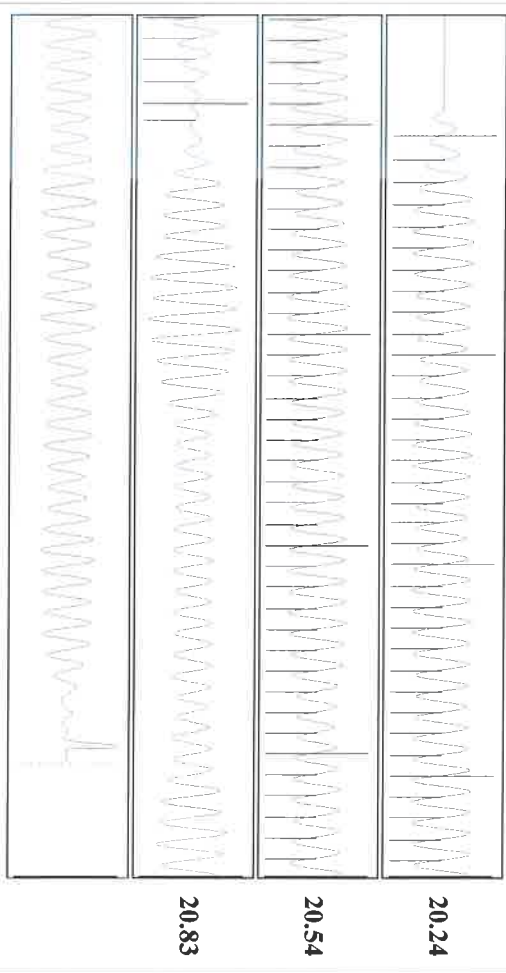


Group: SIERRA MADRE Well: SMITH UNRUH 1 (acquired on: 02/05/20 13:15:27)



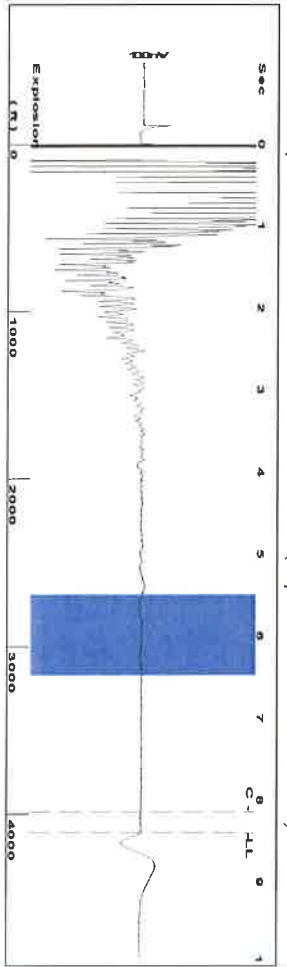
Change in Pressure 0.16 psi PT14020
 Change in Time 0.25 min Range 0 - ? psi

Group: SIERRA MADRE Well: SMITH UNRUH 1 (acquired on: 02/05/20 13:15:27)



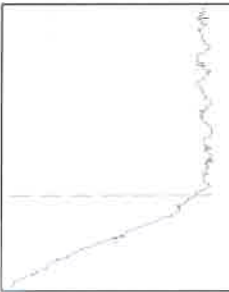
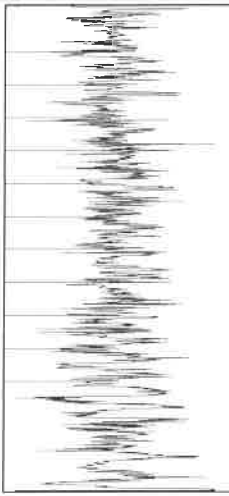
Acoustic Velocity	1295.51 ft/s	Joints counted	81
Joints Per Second	20.4339 Jts/sec	Joints to liquid level	158.138
Depth to liquid level	5012.97 ft	Filter Width	17.802
Automatic Collar Count	Yes	Time to 1st Collar	0.28

Group: SIERRA MADRE Well: SMITH UNRUH 2 (acquired on: 02/05/20 13:31:05)



Filter Type High Pass Automatic Collar Count Yes
 Manual Acoustic Velo 933.726 ft/s Manual JTS/sec 14.7275
 Time 8.397 sec
 Joints 129.729 Jts
 Depth 4112.41 ft

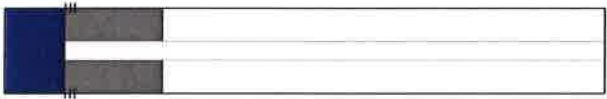
5.5 to 6.5 (Sec)



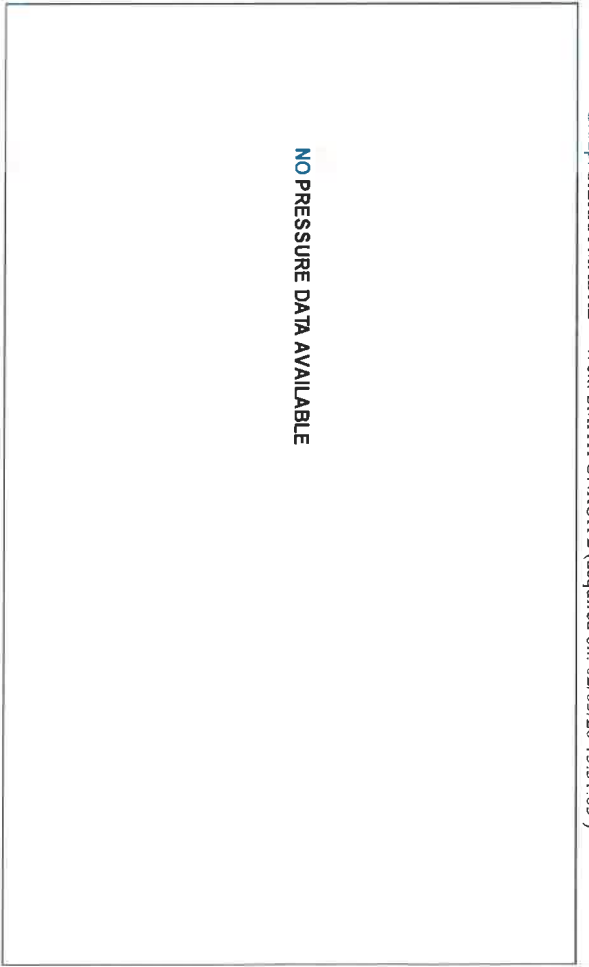
Analysis Method: Automatic

Group: SIERRA MADRE Well: SMITH UNRUH 2 (acquired on: 02/05/20 13:31:05)

Production Current	Potential	Casing Pressure	Static
Oil -*- BBL/D	-*- BBL/D	39.7 psi (g)	Oil Column Height
Water -*- BBL/D	-*- BBL/D	Casing Pressure Buildup	MD 0 ft
Gas -*- Mscf/D	-*- Mscf/D	-*- psi	Water Column Height
IPR Method	Vogel	Gas/Liquid Interface Pressure	MD 996 ft
PBHP/SBHP	-*-	47.8 psi (g)	Static BHP
Production Efficiency	0.0		500.5 psi (g)
Oil 40 deg API	Liquid Level Depth		
Water 1.05 Sp Gr: H2O	4112.41 ft		
Gas 0.99 Sp Gr: AIR	Pump Intake Depth		
Acoustic Velocity	5166.00 ft		
	Formation Depth		
	5108.00 ft		

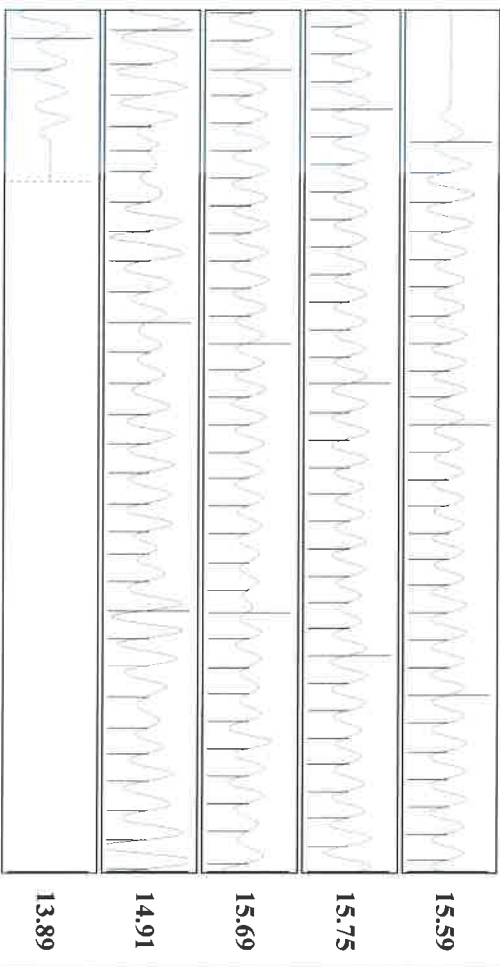


Group: SIERRA MADRE Well: SMITH UNRUH 2 (acquired on: 02/05/20 13:31:05)



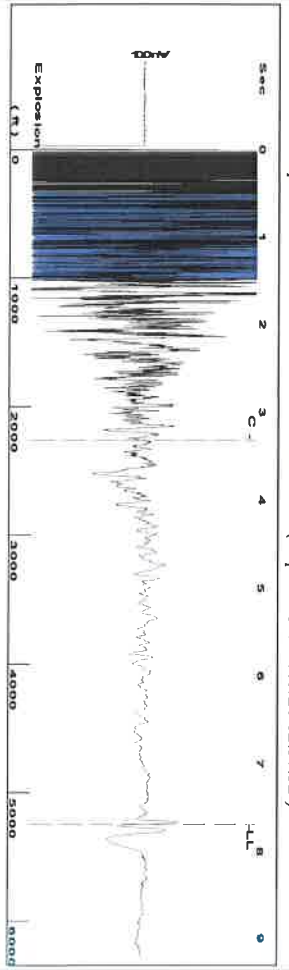
Change in Pressure 0.00 psi PT1 4020
 Change in Time 0.00 min Range 0 - ? psi

Group: SIERRA MADRE Well: SMITH UNRUH 2 (acquired on: 02/05/20 13:31:05)



Acoustic Velocity	979.494 ft/s	Joints counted	121
Joints Per Second	15.4494 Jts/sec	Joints to liquid level	129.729
Depth to liquid level	4112.41 ft	Filter Width	12.7275
Automatic Collar Count	Yes	Time to 1st Collar	0.304

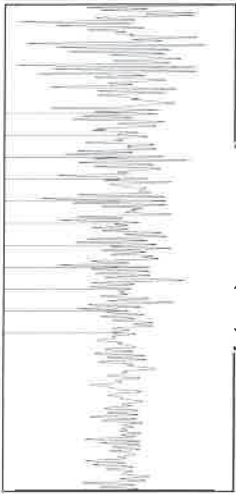
Group: SIERRA MADRE Well: VB SMITH 1 (acquired on: 02/05/20 12:57:52)



Filter Type High Pass Automatic Collar Count Yes
 Manual Acoustic Velo 1399.56 ft/s Manual JTS/sec 22.0751

Time 7.686 sec
 Joints 165.427 Jts
 Depth 5244.04 ft

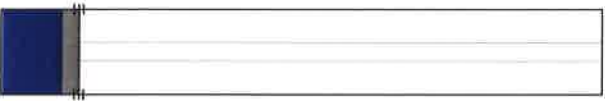
0.5 to 1.5 (Sec) |



Analysis Method: Automatic

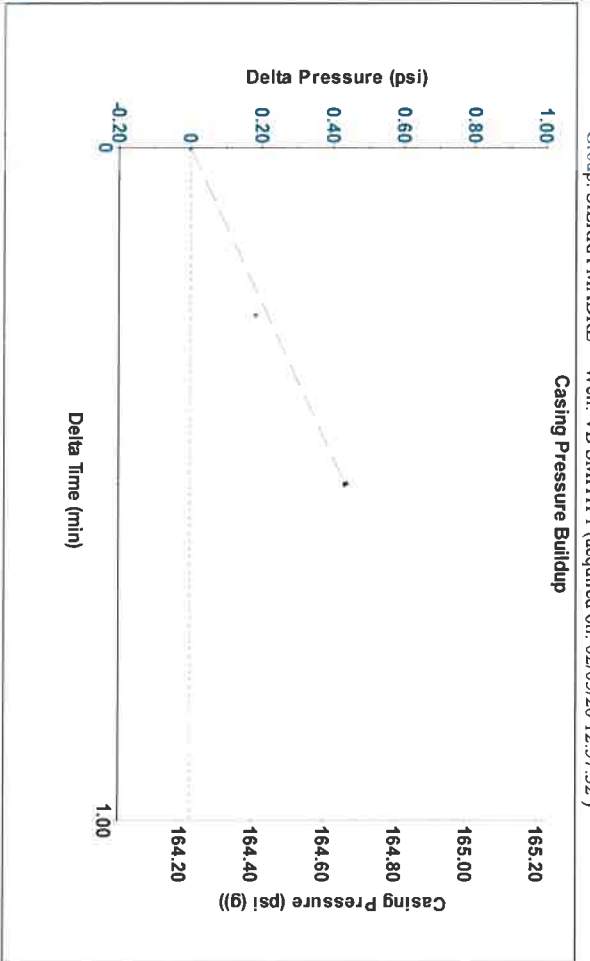
Group: SIERRA MADRE Well: VB SMITH 1 (acquired on: 02/05/20 12:57:52)

Production Current	Potential	Casing Pressure	Static
Oil - * -	- * - BBL/D	164.2 psi (g)	Oil Column Height
Water - * -	- * - BBL/D	Casing Pressure Buildup	MD 0 ft
Gas - * -	- * - Mscf/D	0.4 psi	
		0.50 min	
IPR Method	Vogel	Gas/Liquid Interface Pressure	
PBHP/SBHP	- * -	185.8 psi (g)	
Production Efficiency	0.0		
		Liquid Level Depth	Water Column Height
Oil 40 deg API		5244.04 ft	MD - * - ft
Water 1.05 Sp.Gr:H2O		Pump Intake Depth	
Gas 0.64 Sp.Gr:AIR		5050.00 ft	
		Formation Depth	
Acoustic Velocity	1364.57 ft/s	5057.00 ft	



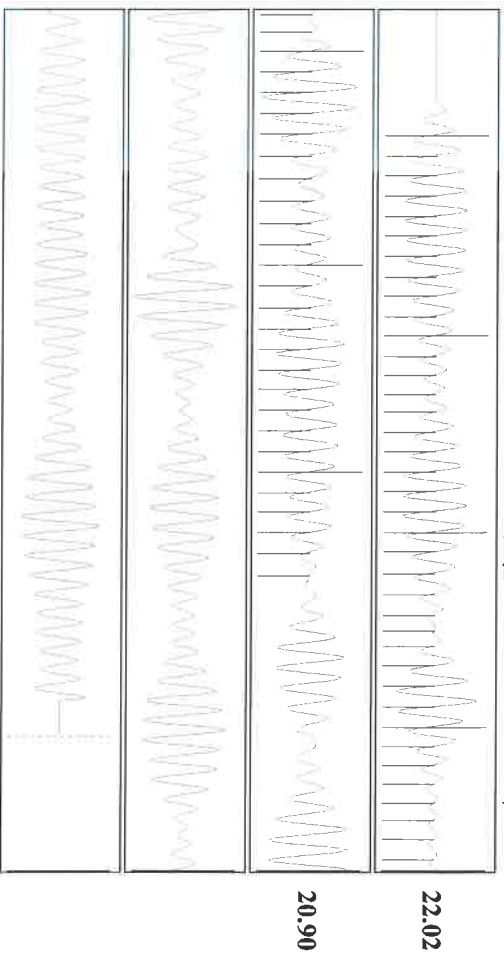
Static BHP
185.0 psi (g)

Group: SIERRA MADRE Well: VB SMITH 1 (acquired on: 02/05/20 12:57:52)



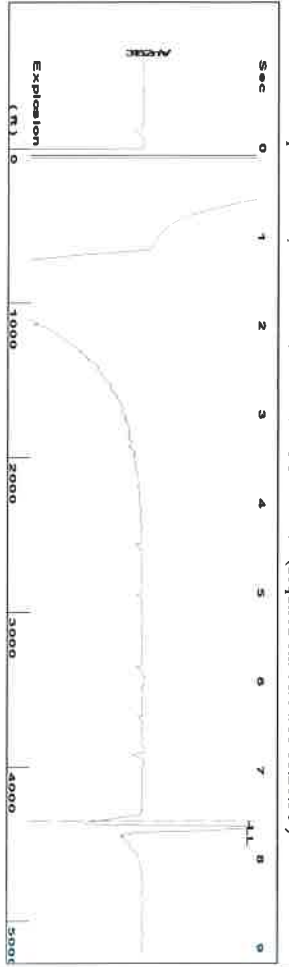
Change in Pressure 0.43 psi PTT 4020
 Change in Time 0.50 min Range 0 - ? psi

Group: SIERRA MADRE Well: VB SMITH 1 (acquired on: 02/05/20 12:57:52)



Acoustic Velocity	1364.57 ft/s	Joints counted	65
Joints Per Second	21.5232 Jts/sec	Joints to liquid level	165.427
Depth to liquid level	5244.04 ft	Filter Width	20.0751
Automatic Collar Count	Yes	Time to 1st Collar	0.292
			24.0751
			3.312

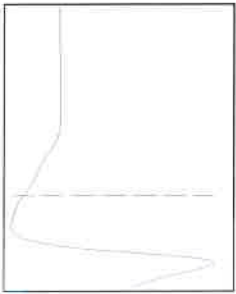
Group: EDISON OPERATING Well: LIGGETT 1-32 (acquired on: 01/04/18 11:26:56)



Time 7.559 sec
 Joints 137,111 Jts
 Depth 4346.43 ft

Liquid level calculated with
 user supplied Acoustic Velocity

Acoustic Velocity 1150 ft/s



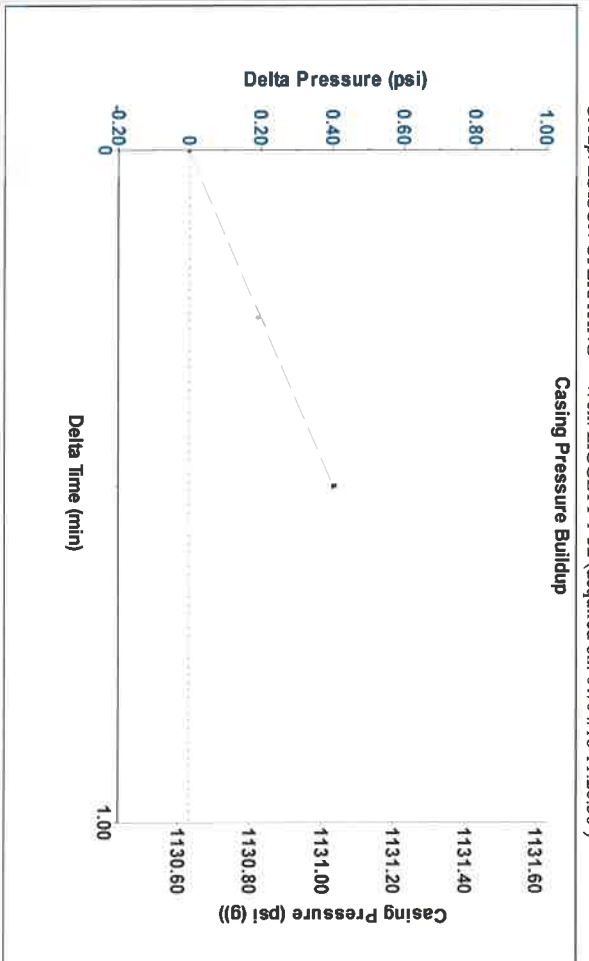
Analysis Method: Acoustic Velocity

Group: EDISON OPERATING Well: LIGGETT 1-32 (acquired on: 01/04/18 11:26:56)

Production Current	Potential	Casing Pressure	Static
Oil - * -	BBL/D	1130.6 psi (g)	Oil Column Height MD 0 ft
Water - * -	BBL/D	Casing Pressure Buildup 0.4 psi	Water Column Height MD - * - ft
Gas - * -	Mscf/D	0.50 min	
IPR Method	Vogel	Gas/Liquid Interface Pressure 1298.5 psi (g)	
PBHP/SBHP	- * -		
Production Efficiency	0.0		
Oil 40 deg API		Liquid Level Depth 4346.43 ft	
Water 1.05 Sp.Gr.H2O		Pump Intake Depth - * - ft	
Gas 0.74 Sp.Gr.AIR		Formation Depth - * - ft	
Acoustic Velocity	1150 ft/s		Static BHP 1619.3 psi (g)



Group: EDISON OPERATING Well: LIGGETT 1-32 (acquired on: 01/04/18 11:26:56)



Change in Pressure 0.40 psi PT14020
 Change in Time 0.50 min Range 0 - ? psi

Group: EDISON OPERATING Well: LIGGETT 1-32 (acquired on: 01/04/18 11:26:56)

Entered Acoustic Velocity for Liquid Level depth determination

Acoustic Test

February 11, 2020

JAMES GREY
Sierra Madre LLC
8520 25TH AVE
GREENSBURG, KS 67054-6772

Re: Temporary Abandonment
API 15-097-21437-00-00
SMITH-UNRUH 2
NW/4 Sec.34-29S-19W
Kiowa County, Kansas

Dear JAMES GREY:

"Your temporary abandonment (TA) application for the well listed above has been approved. In accordance with K.A.R. 82-3-111 the TA status of this well will expire 02/11/2021.

- * If you return this well to service or plug it, please notify the District Office.
- * If you sell this well you are required to file a Transfer of Operator form, T-1.
- * If the well will remain temporarily abandoned, you must submit a new TA application, CP-111, before 02/11/2021.

You may contact me at the number above if you have questions.

Very truly yours,

Michael Maier"