

KANSAS CORPORATION COMMISSION
OIL & GAS CONSERVATION DIVISION

TEMPORARY ABANDONMENT WELL APPLICATION

OPERATOR: License#
Name:
Address 1:
Address 2:
City: State: Zip:
Contact Person:
Phone:
Contact Person Email:
Field Contact Person:
Field Contact Person Phone:

API No. 15-
Spot Description:
Sec. Twp. S. R.
GPS Location: Lat, Long
Datum: NAD27, NAD83, WGS84
County: Elevation:
Lease Name: Well #:
Well Type: Oil, Gas, OG, WSW, Other
SWD Permit #: ENHR Permit #:
Gas Storage Permit #:
Spud Date: Date Shut-In:

Table with 7 columns: Conductor, Surface, Production, Intermediate, Liner, Tubing. Rows include Size, Setting Depth, Amount of Cement, Top of Cement, Bottom of Cement.

Casing Fluid Level from Surface: How Determined? Date:
Casing Squeeze(s): to w / sacks of cement, to w / sacks of cement. Date:
Do you have a valid Oil & Gas Lease? Yes No
Depth and Type: Junk in Hole at Tools in Hole at Casing Leaks: Yes No Depth of casing leak(s):
Type Completion: ALT. I ALT. II Depth of: DV Tool: w / sacks of cement Port Collar: w / sack of cement
Packer Type: Size: Inch Set at: Feet
Total Depth: Plug Back Depth: Plug Back Method:

Geological Date:

Table with 4 columns: Formation Name, Formation Top, Formation Base, Completion Information. Rows 1 and 2.

UNDER PENALTY OF PERJURY I HEREBY ATTEST THAT THE INFORMATION CONTAINED HEREIN IS TRUE AND CORRECT TO THE BEST OF MY KNOWLEDGE

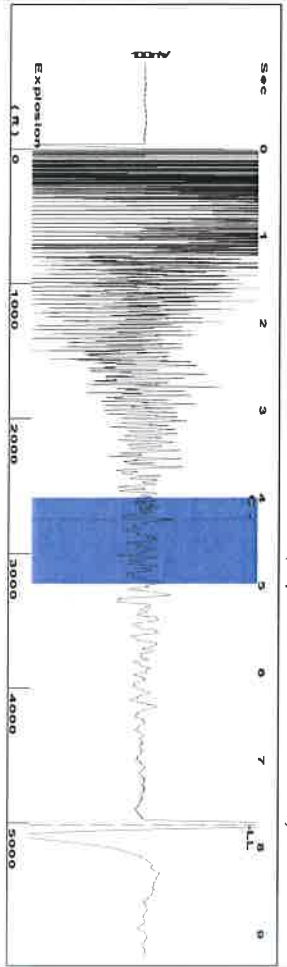
Submitted Electronically

Do NOT Write in This Space - KCC USE ONLY
Date Tested: Results: Date Plugged: Date Repaired: Date Put Back in Service:
Review Completed by: Comments:
TA Approved: Yes Denied Date:

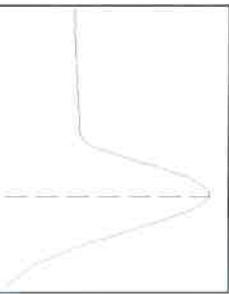
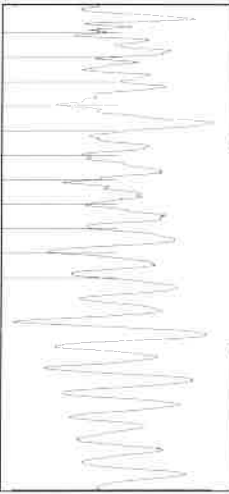
Mail to the Appropriate KCC Conservation Office:

Map of Kansas with 4 numbered districts. Table with 2 columns: Office Name/Address, Phone Number.

Group: SIERRA MADRE Well: SMITH UNRUH 1 (acquired on: 02/05/20 13:15:27)



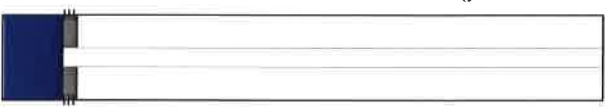
Filter Type High Pass Automatic Collar Count Yes
 Manual Acoustic Velo 1255.45 f/s Manual JTS/sec 19.802
 Time 7.739 sec
 Joints 158.138 Jts
 Depth 5012.97 ft



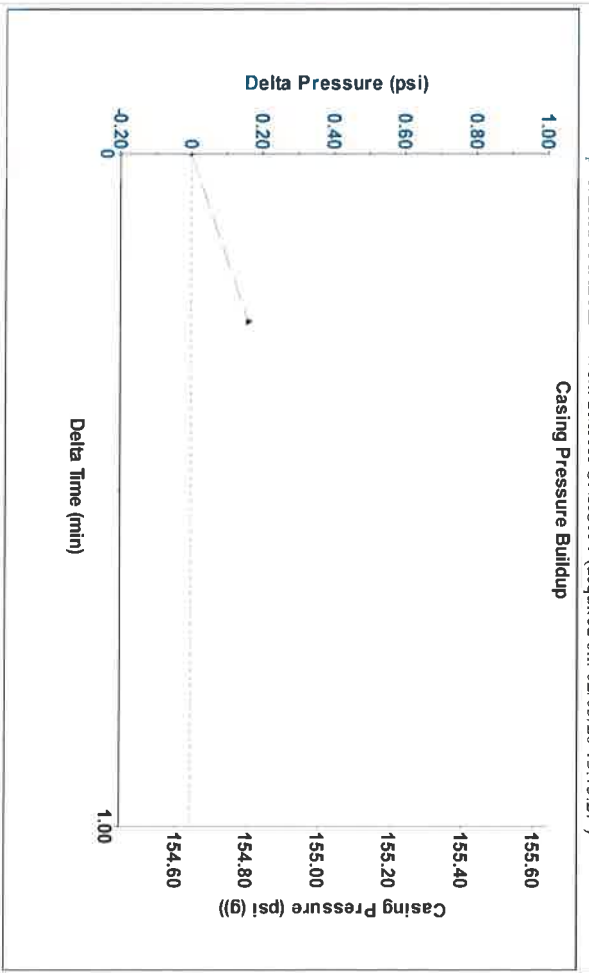
Analysis Method: Automatic

Group: SIERRA MADRE Well: SMITH UNRUH 1 (acquired on: 02/05/20 13:15:27)

Production	Potential	Casing Pressure	Static
Oil -*- BBL/D	154.6 psi (g)	Oil Column Height	MD 0 ft
Water -*- BBL/D	0.2 psi	Casing Pressure Buildup	Water Column Height
Gas -*- Mscf/D	0.25 min	Gas/Liquid Interface Pressure	MD 89 ft
IPR Method	Vogel -*-		
PBHP/SBHP	0.0		
Production Efficiency			
Oil 40 deg API		Liquid Level Depth	Static BHP
Water 1.05 Sp.Gr:H2O		5012.97 ft	216.5 psi (g)
Gas 0.70 Sp.Gr:AIR		Pump Intake Depth	
Acoustic Velocity	1295.51 f/s	5170.00 ft	
		Formation Depth	
		5102.00 ft	

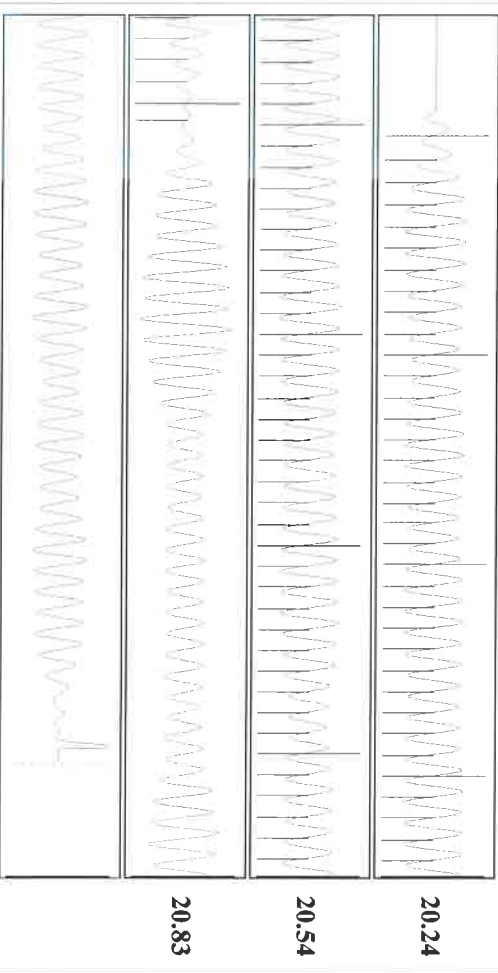


Group: SIERRA MADRE Well: SMITH UNRUH 1 (acquired on: 02/05/20 13:15:27)



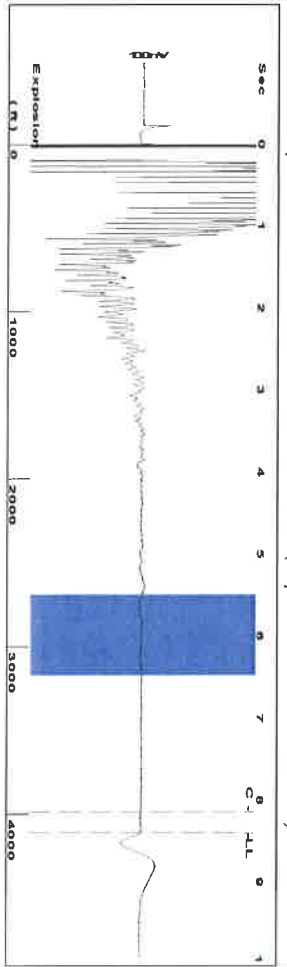
Change in Pressure 0.16 psi PTT14020
 Change in Time 0.25 min Range 0 - ? psi

Group: SIERRA MADRE Well: SMITH UNRUH 1 (acquired on: 02/05/20 13:15:27)



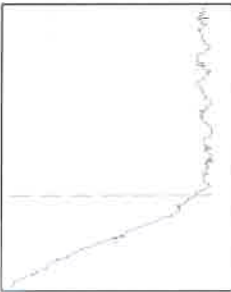
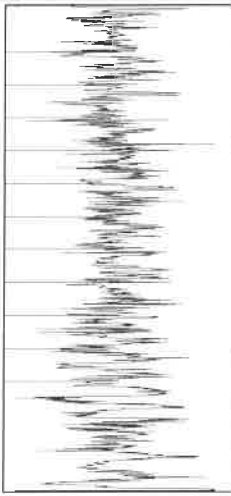
Acoustic Velocity	1295.51 f/s	Joints counted	81
Joints Per Second	20.4339 Jts/sec	Joints to liquid level	158.138
Depth to liquid level	5012.97 ft	Filter Width	17.802
Automatic Collar Count	Yes	Time to 1st Collar	0.28

Group: SIERRA MADRE Well: SMITH UNRUH 2 (acquired on: 02/05/20 13:31:05)



Filter Type High Pass Automatic Collar Count Yes
 Manual Acoustic Velo 933.726 ft/s Manual JTS/sec 14.7275
 Time 8.397 sec
 Joints 129.729 Jts
 Depth 4112.41 ft

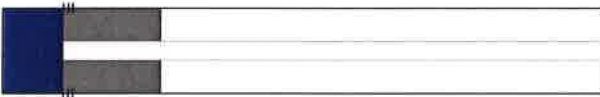
5.5 to 6.5 (Sec) |



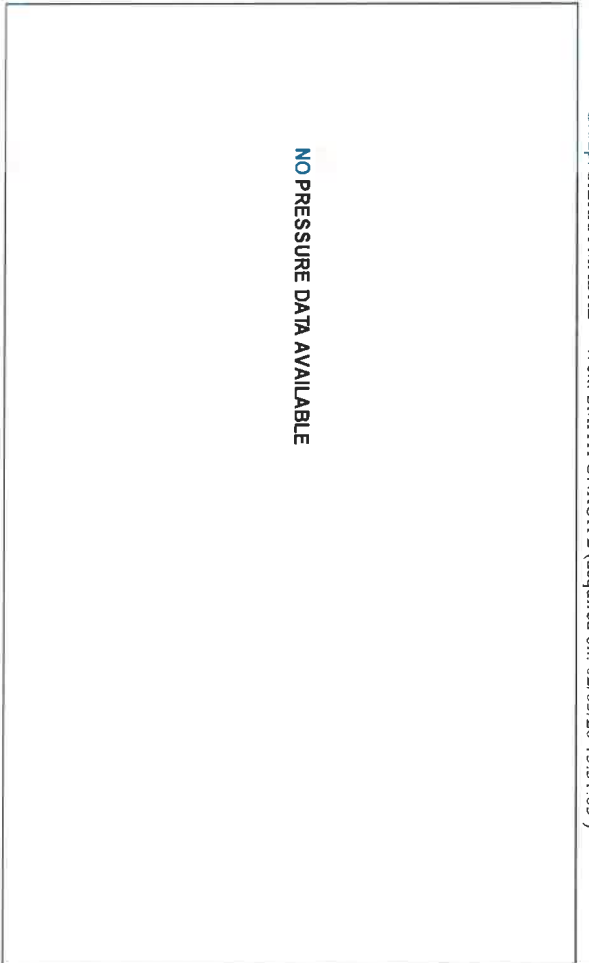
Analysis Method: Automatic

Group: SIERRA MADRE Well: SMITH UNRUH 2 (acquired on: 02/05/20 13:31:05)

Production Current	Potential	Casing Pressure	Static
Oil -*- BBL/D	-*- BBL/D	39.7 psi (g)	Oil Column Height
Water -*- BBL/D	-*- BBL/D	Casing Pressure Buildup	MD 0 ft
Gas -*- Mscf/D	-*- Mscf/D	-*- psi	
IPR Method	Vogel	Gas/Liquid Interface Pressure	
PBHP/SBHP	-*-	47.8 psi (g)	
Production Efficiency	0.0		
Oil 40 deg API		Liquid Level Depth	Water Column Height
Water 1.05 Sp Gr: H2O		4112.41 ft	MD 996 ft
Gas 0.99 Sp Gr: AIR		Pump Intake Depth	
Acoustic Velocity	979.494 ft/s	5166.00 ft	
		Formation Depth	
		5108.00 ft	

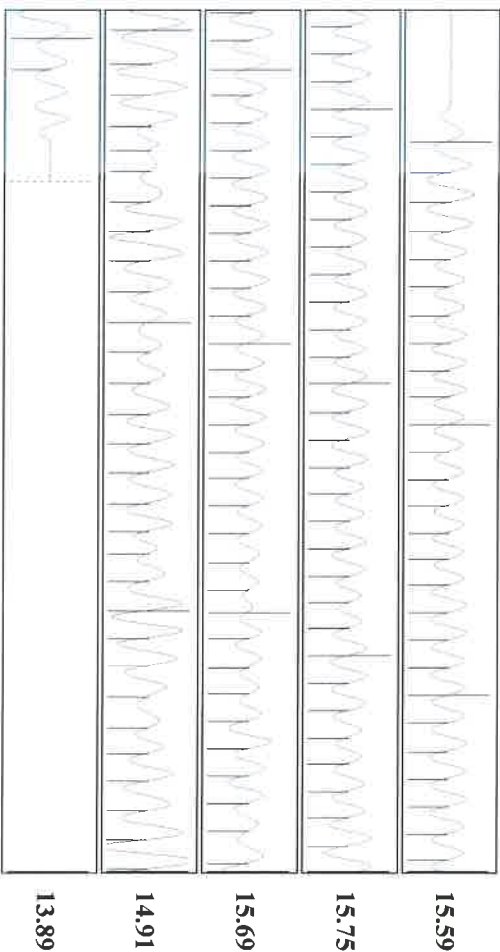


Group: SIERRA MADRE Well: SMITH UNRUH 2 (acquired on: 02/05/20 13:31:05)



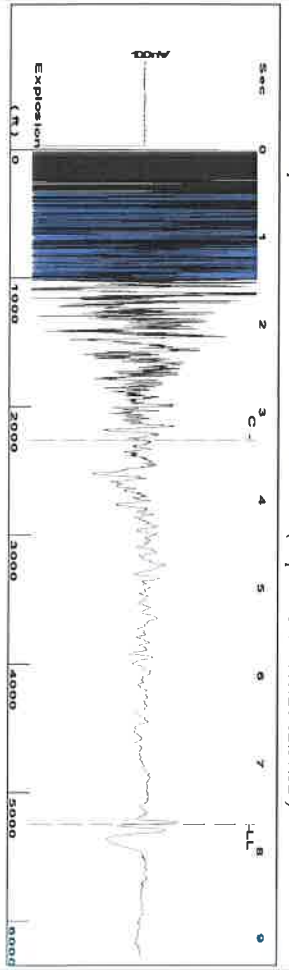
Change in Pressure 0.00 psi PT1 4020
 Change in Time 0.00 min Range 0 - ? psi

Group: SIERRA MADRE Well: SMITH UNRUH 2 (acquired on: 02/05/20 13:31:05)

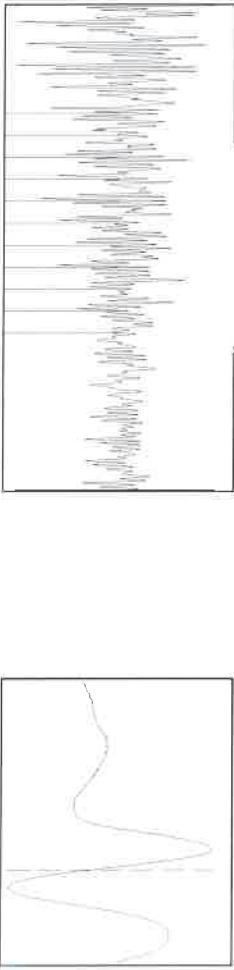


Acoustic Velocity	979.494 ft/s	Joints counted	121
Joints Per Second	15.4494 Jts/sec	Joints to liquid level	129.729
Depth to liquid level	4112.41 ft	Filter Width	12.7275
Automatic Collar Count	Yes	Time to 1st Collar	0.304

Group: SIERRA MADRE Well: VB SMITH 1 (acquired on: 02/05/20 12:57:52)



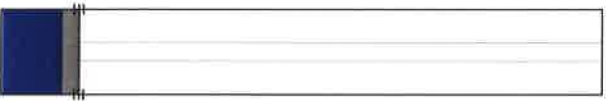
Filter Type High Pass Automatic Collar Count Yes
 Manual Acoustic Velo 1399.56 f/s Manual JTS/sec 22.0751
 Time 7.686 sec
 Joints 165.427 Jts
 Depth 5244.04 ft



Analysis Method: Automatic

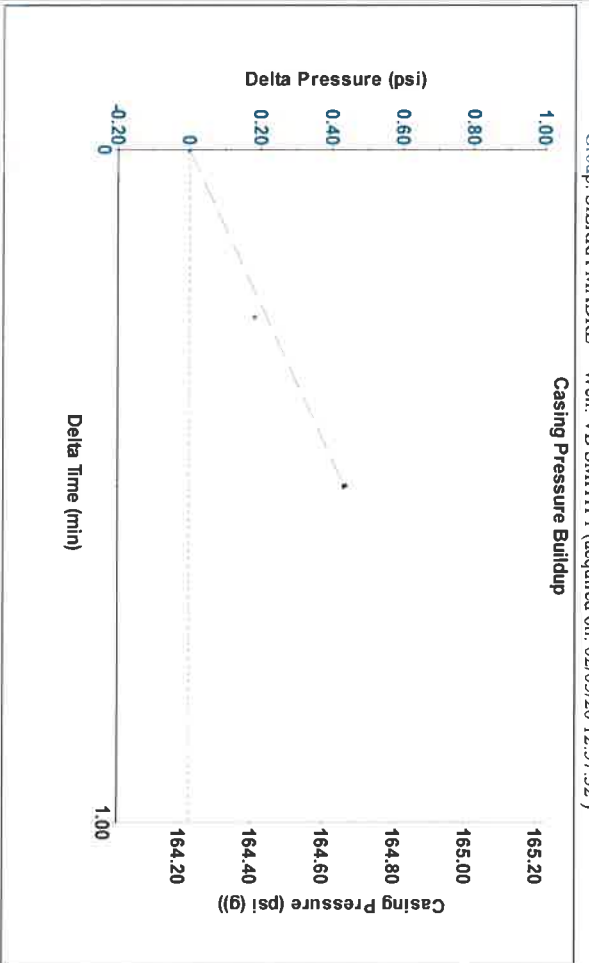
Group: SIERRA MADRE Well: VB SMITH 1 (acquired on: 02/05/20 12:57:52)

Production	Potential	Casing Pressure	Static
Current	-* - BBL/D	164.2 psi (g)	
Oil	-* - BBL/D	Casing Pressure Buildup	Oil Column Height
Water	-* - Mscf/D	0.4 psi	MD 0 ft
Gas	-* -	0.50 min	
IPR Method	Vogel	Gas/Liquid Interface Pressure	
PBHP/SBHP	-* -	185.8 psi (g)	
Production Efficiency	0.0		
Oil	40 deg API	Liquid Level Depth	Water Column Height
Water	1.05 Sp.Gr:H2O	5244.04 ft	MD -* - ft
Gas	0.64 Sp.Gr:AIR	Pump Intake Depth	
Acoustic Velocity	1364.57 ft/s	5050.00 ft	
		Formation Depth	
		5057.00 ft	



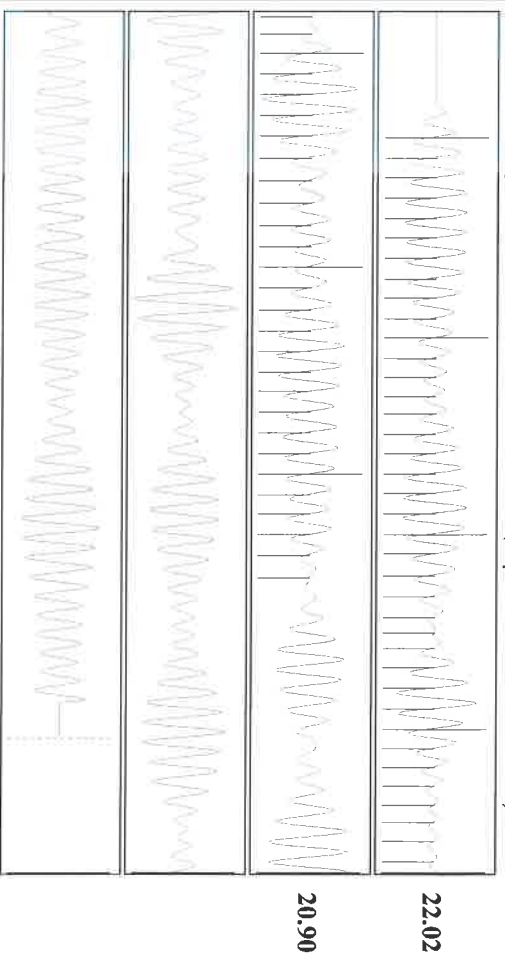
Static BHP
185.0 psi (g)

Group: SIERRA MADRE Well: VB SMITH 1 (acquired on: 02/05/20 12:57:52)



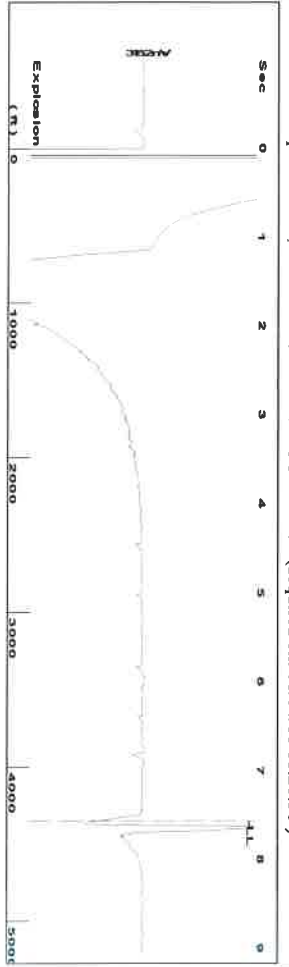
Change in Pressure 0.43 psi PTT 4020
 Change in Time 0.50 min Range 0 - ? psi

Group: SIERRA MADRE Well: VB SMITH 1 (acquired on: 02/05/20 12:57:52)



Acoustic Velocity 1364.57 ft/s Joints counted 65
 Joints Per Second 21.5232 Jts/sec Joints to liquid level 165.427
 Depth to liquid level 5244.04 ft Filter Width 20.0751
 Automatic Collar Count Yes Time to 1st Collar 0.292 24.0751
 3.312

Group: EDISON OPERATING Well: LIGGETT 1-32 (acquired on: 01/04/18 11:26:56)



Time 7.559 sec
 Joints 137,111 Jts
 Depth 4346.43 ft

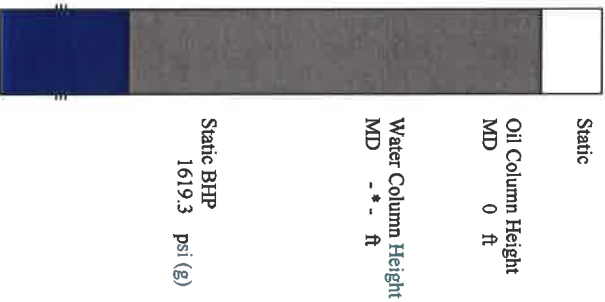
Liquid level calculated with
 user supplied Acoustic Velocity

Acoustic Velocity 1150 ft/s

Analysis Method: Acoustic Velocity

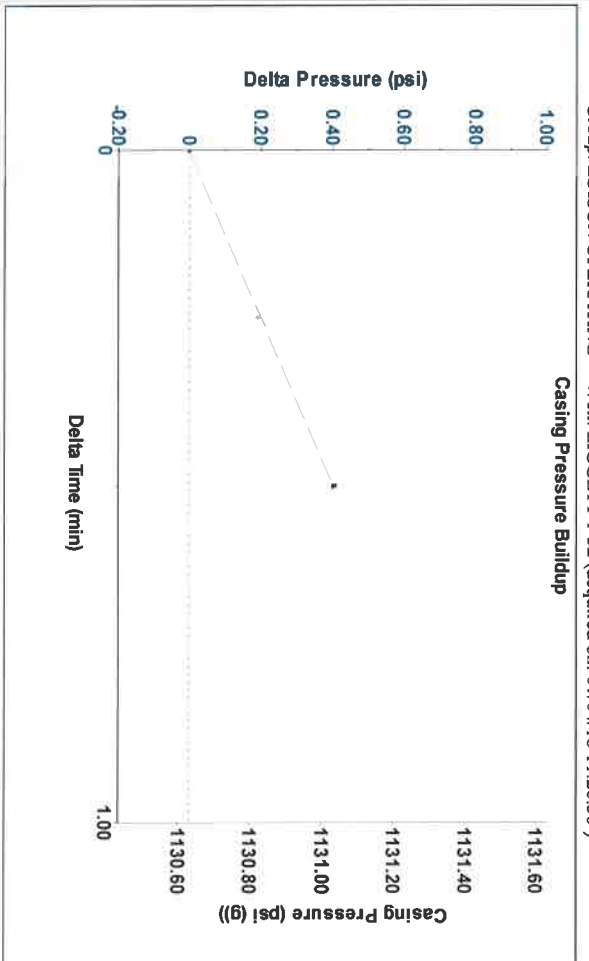
Group: EDISON OPERATING Well: LIGGETT 1-32 (acquired on: 01/04/18 11:26:56)

Production Current	Potential	Casing Pressure	Static
Oil - * -	BBL/D	1130.6 psi (g)	Oil Column Height MD 0 ft
Water - * -	BBL/D	Casing Pressure Buildup 0.4 psi	Water Column Height MD - * - ft
Gas - * -	Mscf/D	0.50 min	
IPR Method	Vogel	Gas/Liquid Interface Pressure 1298.5 psi (g)	
PBHP/SBHP	- * -		
Production Efficiency	0.0		
Oil 40 deg API	Liquid Level Depth 4346.43 ft		
Water 1.05 Sp.Gr.:H2O	Pump Intake Depth - * - ft		
Gas 0.74 Sp.Gr.:AIR	Formation Depth 5052.00 ft		
Acoustic Velocity 1150 ft/s			



Acoustic Test

Group: EDISON OPERATING Well: LIGGETT 1-32 (acquired on: 01/04/18 11:26:56)



Change in Pressure 0.40 psi PT14020
 Change in Time 0.50 min Range 0 - ? psi

Group: EDISON OPERATING Well: LIGGETT 1-32 (acquired on: 01/04/18 11:26:56)

Entered Acoustic Velocity for Liquid Level depth determination

Susan K. Duffy, Chair
Shari Feist Albrecht, Commissioner
Dwight D. Keen, Commissioner

Laura Kelly, Governor

February 11, 2020

JAMES GREY
Sierra Madre LLC
8520 25TH AVE
GREENSBURG, KS 67054-6772

Re: Temporary Abandonment
API 15-097-30170-00-00
SMITH VB 1
SE/4 Sec.34-29S-19W
Kiowa County, Kansas

Dear JAMES GREY:

"Your temporary abandonment (TA) application for the well listed above has been approved. In accordance with K.A.R. 82-3-111 the TA status of this well will expire 02/11/2021.

- * If you return this well to service or plug it, please notify the District Office.
- * If you sell this well you are required to file a Transfer of Operator form, T-1.
- * If the well will remain temporarily abandoned, you must submit a new TA application, CP-111, before 02/11/2021.

You may contact me at the number above if you have questions.

Very truly yours,

Michael Maier"