

KANSAS CORPORATION COMMISSION
OIL & GAS CONSERVATION DIVISION

TEMPORARY ABANDONMENT WELL APPLICATION

OPERATOR: License# _____
 Name: _____
 Address 1: _____
 Address 2: _____
 City: _____ State: _____ Zip: _____ + _____
 Contact Person: _____
 Phone: (_____) _____
 Contact Person Email: _____
 Field Contact Person: _____
 Field Contact Person Phone: (_____) _____

API No. 15- _____
 Spot Description: _____
 _____ - _____ - _____ - _____ Sec. _____ Twp. _____ S. R. _____ E W
 _____ feet from N / S Line of Section
 _____ feet from E / W Line of Section
 GPS Location: Lat: _____, Long: _____
(e.g. xx.xxxxx) (e.g. -xxx.xxxxx)
 Datum: NAD27 NAD83 WGS84
 County: _____ Elevation: _____ GL KB
 Lease Name: _____ Well #: _____
 Well Type: (check one) Oil Gas OG WSW Other: _____
 SWD Permit #: _____ ENHR Permit #: _____
 Gas Storage Permit #: _____
 Spud Date: _____ Date Shut-In: _____

	Conductor	Surface	Production	Intermediate	Liner	Tubing
Size						
Setting Depth						
Amount of Cement						
Top of Cement						
Bottom of Cement						

Casing Fluid Level from Surface: _____ How Determined? _____ Date: _____
 Casing Squeeze(s): _____ to _____ w / _____ sacks of cement, _____ to _____ w / _____ sacks of cement. Date: _____
(top) (bottom) (top) (bottom)
 Do you have a valid Oil & Gas Lease? Yes No
 Depth and Type: Junk in Hole at _____ Tools in Hole at _____ Casing Leaks: Yes No Depth of casing leak(s): _____
(depth) (depth)
 Type Completion: ALT. I ALT. II Depth of: DV Tool: _____ w / _____ sacks of cement Port Collar: _____ w / _____ sack of cement
(depth) (depth)
 Packer Type: _____ Size: _____ Inch Set at: _____ Feet
 Total Depth: _____ Plug Back Depth: _____ Plug Back Method: _____

Geological Data:

Formation Name	Formation Top	Formation Base	Completion Information
1. _____	At: _____	to _____ Feet	Perforation Interval _____ to _____ Feet or Open Hole Interval _____ to _____ Feet
2. _____	At: _____	to _____ Feet	Perforation Interval _____ to _____ Feet or Open Hole Interval _____ to _____ Feet

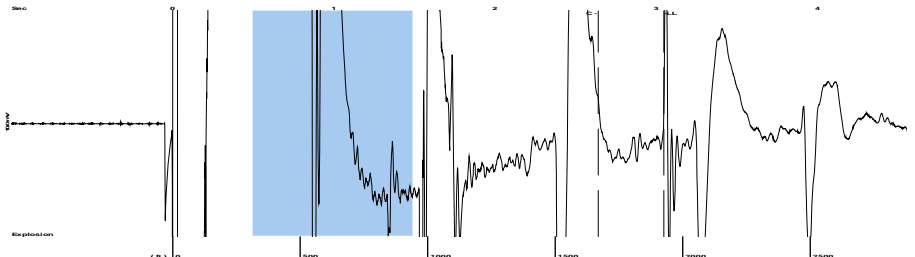
UNDER PENALTY OF PERJURY I HEREBY ATTEST THAT THE INFORMATION CONTAINED HEREIN IS TRUE AND CORRECT TO THE BEST OF MY KNOWLEDGE

Submitted Electronically

Do NOT Write in This Space - KCC USE ONLY	Date Tested: _____	Results: _____	Date Plugged: _____	Date Repaired: _____	Date Put Back in Service: _____
	Review Completed by: _____ Comments: _____				
TA Approved: <input type="checkbox"/> Yes <input type="checkbox"/> Denied Date: _____					

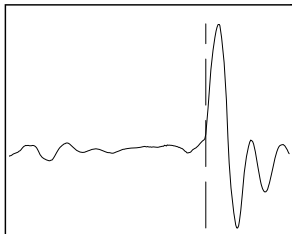
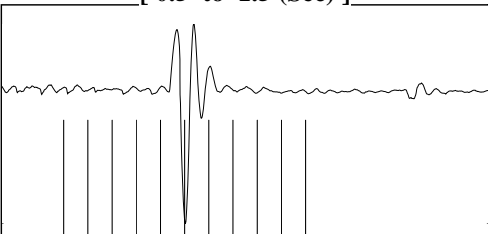
Mail to the Appropriate KCC Conservation Office:

	KCC District Office #1 - 210 E. Frontview, Suite A, Dodge City, KS 67801	Phone 620.682.7933
	KCC District Office #2 - 3450 N. Rock Road, Building 600, Suite 601, Wichita, KS 67226	Phone 316.337.7400
	KCC District Office #3 - 137 E. 21st St., Chanute, KS 66720	Phone 620.902.6450
	KCC District Office #4 - 2301 E. 13th Street, Hays, KS 67601-2651	Phone 785.261.6250

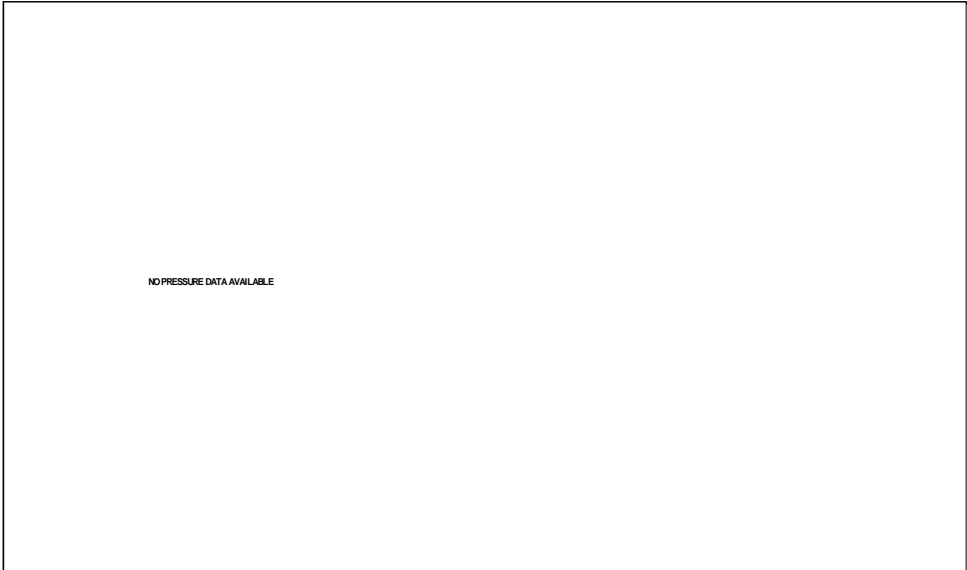


Filter Type High Pass Automatic Collar Count Yes Time 3.047 sec
 Manual Acoustic Velo 1275.65 ft/s Manual JTS/sec 20.1207 Joints 60.7531 Jts
 Depth 1925.87 ft

[0.5 to 1.5 (Sec)]

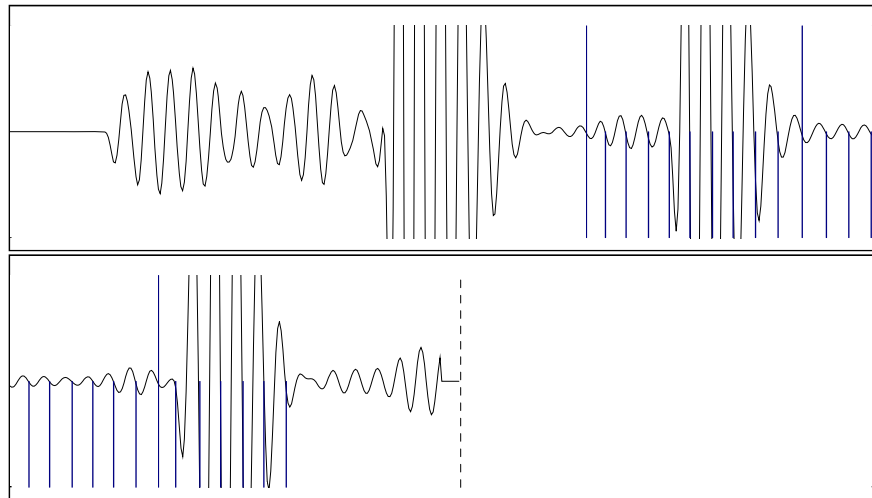
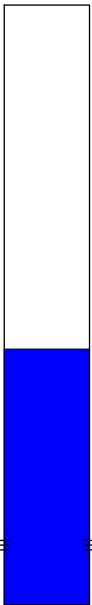


Analysis Method: Automatic



Change in Pressure 0.18 psi PT16027
 Range 0 - ? psi
 Change in Time 0.25 min

Production		Potential		Casing Pressure		Producing	
Current							
Oil	- * -	- * -	BBL/D	-1.3	psi (g)		
Water	- * -	- * -	BBL/D		Casing Pressure Buildup		
Gas	- * -	- * -	Mscf/D	0.2	psi		
				0.25	min		
IPR Method		Vogel			Gas/Liquid Interface Pressure		
PBHP/SBHP		- * -		- * -	psi (g)		
Production Efficiency		0.0					
Oil	40	deg.API			Liquid Level Depth		
Water	1.05	Sp.Gr.H2O			1925.87	ft	
Gas	0.73	Sp.Gr.AIR			Tubing Intake Depth		
					- * -	ft	
Acoustic Velocity	1264.11	ft/s			Formation Depth		
					3254.00	ft	
Formation Submergence							
Total Gaseous Liquid Column HT (TVD)				- * -	ft		
Equivalent Gas Free Liquid HT (TVD)				- * -	ft		
Acoustic Test							



Acoustic Velocity	1264.11	ft/s	Joints counted	26
Joints Per Second	19.9387	jts/sec	Joints to liquid level	60.7531
Depth to liquid level	1925.87	ft	Filter Width	18.1207
Automatic Collar Count	Yes		Time to 1st Collar	1.336
				2.64

Group: MyWells Well: REINHARDT B-6 (acquired on: 02/11/20 15:06:17)

Production
 Current Potential
 Oil - * - - * - BBL/D
 Water - * - - * - BBL/D
 Gas - * - - * - Mscf/D

Based on SBHP psi (g)

IPR Method Vogel

Calculation for Continous Removal of Liquids
 Method:

Turner Critical Velocity for Gas Wells

For Tubing ID: 2.441 in

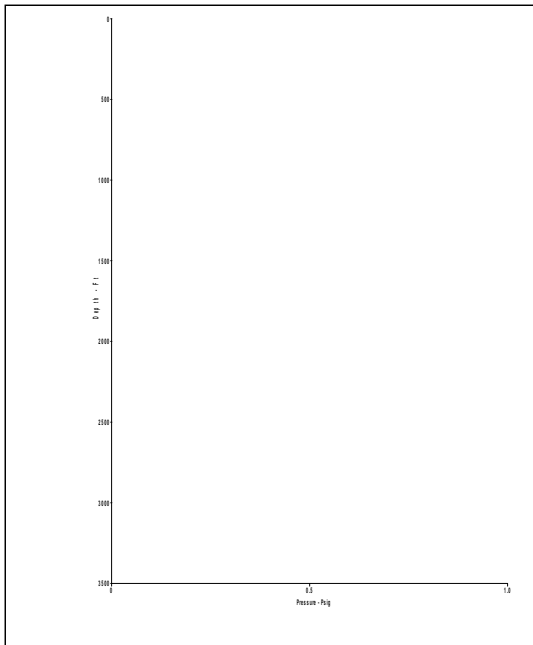
For Water: Mscf/D

For Condensate: Mscf/D

Back Pressure on Formation

Due To Liquid Loading: Mscf/D

Tubing ID in	Gas Rate Mscf/D	Predicted Status
2.441		
1.995		
1.500		
1.250		
1.000		



February 12, 2020

Jose Reyes
American Warrior, Inc.
PO BOX 399
GARDEN CITY, KS 67846-0399

Re: Temporary Abandonment
API 15-167-05574-00-00
REINHARDT 8 6
SW/4 Sec.19-14S-14W
Russell County, Kansas

Dear Jose Reyes:

"Your temporary abandonment (TA) application for the well listed above has been approved. In accordance with K.A.R. 82-3-111 the TA status of this well will expire 02/12/2021.

- * If you return this well to service or plug it, please notify the District Office.
- * If you sell this well you are required to file a Transfer of Operator form, T-1.
- * If the well will remain temporarily abandoned, you must submit a new TA application, CP-111, before 02/12/2021.

You may contact me at the number above if you have questions.

Very truly yours,

RICHARD WILLIAMS"