

KANSAS CORPORATION COMMISSION
OIL & GAS CONSERVATION DIVISION

TEMPORARY ABANDONMENT WELL APPLICATION

OPERATOR: License#
Name:
Address 1:
Address 2:
City: State: Zip:
Contact Person:
Phone:
Contact Person Email:
Field Contact Person:
Field Contact Person Phone:

API No. 15-
Spot Description:
Sec. Twp. S. R.
feet from N / S Line of Section
feet from E / W Line of Section
GPS Location: Lat: , Long:
Datum: NAD27 NAD83 WGS84
County: Elevation: GL KB
Lease Name: Well #:
Well Type: Oil Gas OG WSW Other:
SWD Permit #: ENHR Permit #:
Gas Storage Permit #:
Spud Date: Date Shut-In:

Table with 7 columns: Conductor, Surface, Production, Intermediate, Liner, Tubing. Rows include Size, Setting Depth, Amount of Cement, Top of Cement, Bottom of Cement.

Casing Fluid Level from Surface: How Determined? Date:
Casing Squeeze(s): to w / sacks of cement, to w / sacks of cement. Date:
Do you have a valid Oil & Gas Lease? Yes No
Depth and Type: Junk in Hole at Tools in Hole at Casing Leaks: Yes No Depth of casing leak(s):
Type Completion: ALT. I ALT. II Depth of: DV Tool: w / sacks of cement Port Collar: w / sack of cement
Packer Type: Size: Inch Set at: Feet
Total Depth: Plug Back Depth: Plug Back Method:

Geological Data:

Table with 4 columns: Formation Name, Formation Top, Formation Base, Completion Information. Rows 1 and 2.

UNDER PENALTY OF PERJURY I HEREBY ATTEST THAT THE INFORMATION CONTAINED HEREIN IS TRUE AND CORRECT TO THE BEST OF MY KNOWLEDGE

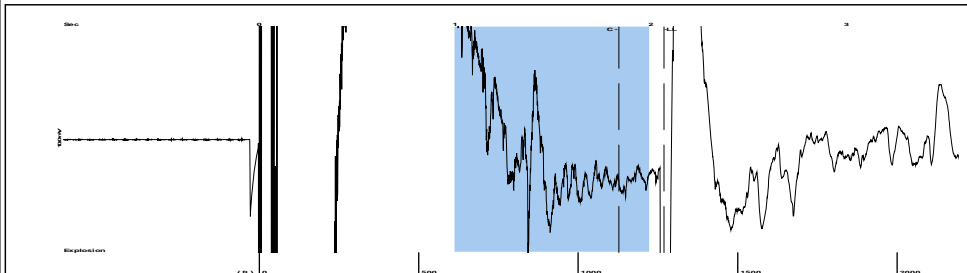
Submitted Electronically

Do NOT Write in This Space - KCC USE ONLY
Date Tested: Results: Date Plugged: Date Repaired: Date Put Back in Service:
Review Completed by: Comments:
TA Approved: Yes Denied Date:

Mail to the Appropriate KCC Conservation Office:

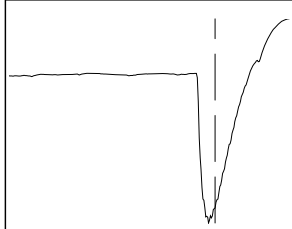
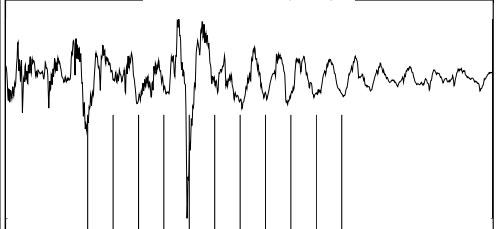
Table with 2 columns: Office Address, Phone. Rows for District Office #1, #2, #3, #4.

Group: MyWells Well: REINHARDT B-2 (acquired on: 02/11/20 14:56:40)



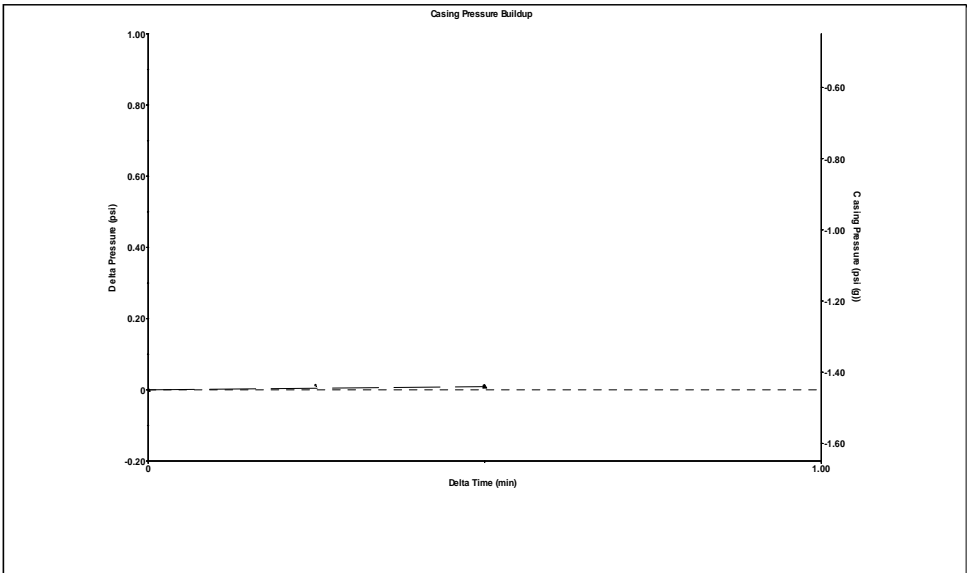
Filter Type High Pass Automatic Collar Count Yes Time 2.066 sec
 Manual Acoustic Velo 1214.56 ft/s Manual JTS/sec 19.1571 Joints 40.0106 Jts
 Depth 1268.33 ft

[1.0 to 2.0 (Sec)]



Analysis Method: Automatic

Group: MyWells Well: REINHARDT B-2 (acquired on: 02/11/20 14:56:40)

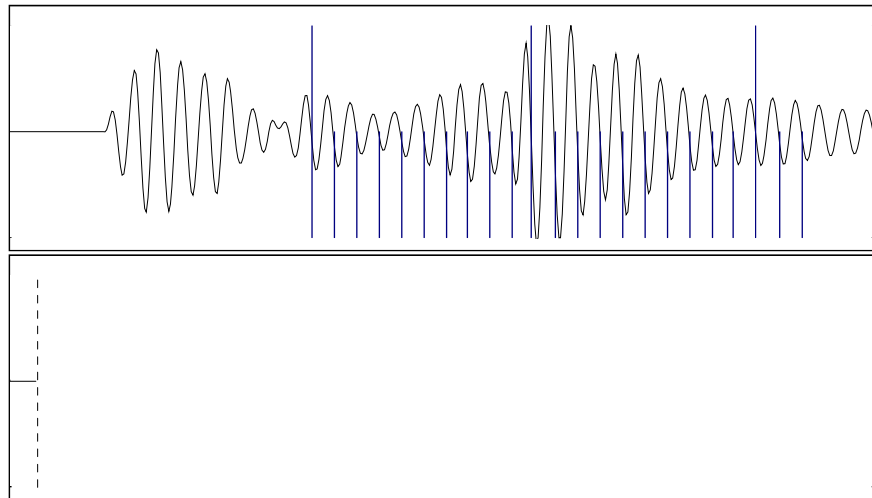


Change in Pressure 0.01 psi PT16027
 Change in Time 0.50 min Range 0 - ? psi

Group: MyWells Well: REINHARDT B-2 (acquired on: 02/11/20 14:56:40)

<p>Production</p> <p>Current Potential</p> <p>Oil - * - BBL/D</p> <p>Water - * - BBL/D</p> <p>Gas - * - Mscf/D</p> <p>IPR Method Vogel</p> <p>PBHP/SBHP - * -</p> <p>Production Efficiency 0.0</p> <p>Oil 40 deg.API</p> <p>Water 1.05 Sp.Gr.H2O</p> <p>Gas 0.76 Sp.Gr.AIR</p> <p>Acoustic Velocity 1227.82 ft/s</p> <p>Formation Submergence</p> <p>Total Gaseous Liquid Column HT (TVD) - * - ft</p> <p>Equivalent Gas Free Liquid HT (TVD) - * - ft</p> <p>Acoustic Test</p>	<p>Casing Pressure -1.4 psi (g)</p> <p>Casing Pressure Buildup 0.009 psi</p> <p>Gas/Liquid Interface Pressure 0.50 min</p> <p>Liquid Level Depth 1268.33 ft</p> <p>Pump Intake Depth - * - ft</p> <p>Formation Depth 3244.00 ft</p>	<p>Producing</p> <p>Annular Gas Flow - * - Mscf/D</p> <p>% Liquid 100 %</p> <p>Pump Intake - * - psi (g)</p> <p>Producing BHP - * - psi (g)</p> <p>Static BHP - * - psi (g)</p>
---	---	---

Group: MyWells Well: REINHARDT B-2 (acquired on: 02/11/20 14:56:40)



19.37

Acoustic Velocity 1227.82 ft/s Joints counted 22
 Joints Per Second 19.3662 jts/sec Joints to liquid level 40.0106
 Depth to liquid level 1268.33 ft Filter Width 17.1571 21.1571
 Automatic Collar Count Yes Time to 1st Collar 0.7 1.836

February 12, 2020

Jose Reyes
American Warrior, Inc.
PO BOX 399
GARDEN CITY, KS 67846-0399

Re: Temporary Abandonment
API 15-167-06895-00-00
REINHARDT D B-2
SW/4 Sec.19-14S-14W
Russell County, Kansas

Dear Jose Reyes:

"Your temporary abandonment (TA) application for the well listed above has been approved. In accordance with K.A.R. 82-3-111 the TA status of this well will expire 02/12/2021.

- * If you return this well to service or plug it, please notify the District Office.
- * If you sell this well you are required to file a Transfer of Operator form, T-1.
- * If the well will remain temporarily abandoned, you must submit a new TA application, CP-111, before 02/12/2021.

You may contact me at the number above if you have questions.

Very truly yours,

RICHARD WILLIAMS"