

KANSAS CORPORATION COMMISSION
OIL & GAS CONSERVATION DIVISION

Form must be Typed

Form must be signed

All blanks must be complete

TEMPORARY ABANDONMENT WELL APPLICATION

OPERATOR: License# _____

Name: _____

Address 1: _____

Address 2: _____

City: _____ State: _____ Zip: _____ + _____

Contact Person: _____

Phone: (_____) _____

Contact Person Email: _____

Field Contact Person: _____

Field Contact Person Phone: (_____) _____

API No. 15- _____

Spot Description: _____

____ - ____ - ____ - ____ Sec. _____ Twp. _____ S. R. _____ ☐ E ☐ W_____ feet from ☐ N / ☐ S Line of Section_____ feet from ☐ E / ☐ W Line of Section

GPS Location: Lat: _____, Long: _____

(e.g. xx.xxxxx) (e.g. -xxx.xxxxx)

Datum: ☐ NAD27 ☐ NAD83 ☐ WGS84County: _____ Elevation: _____ ☐ GL ☐ KB

Lease Name: _____ Well #: _____

Well Type: (check one) ☐ Oil ☐ Gas ☐ OG ☐ WSW ☐ Other: _____☐ SWD Permit #: _____ ☐ ENHR Permit #: _____☐ Gas Storage Permit #: _____

Spud Date: _____ Date Shut-In: _____

	Conductor	Surface	Production	Intermediate	Liner	Tubing
Size						
Setting Depth						
Amount of Cement						
Top of Cement						
Bottom of Cement						

Casing Fluid Level from Surface: _____ How Determined? _____ Date: _____

Casing Squeeze(s): _____ to _____ w / _____ sacks of cement, _____ to _____ w / _____ sacks of cement. Date: _____
(top) (bottom) (top) (bottom)Do you have a valid Oil & Gas Lease? ☐ Yes ☐ NoDepth and Type: ☐ Junk in Hole at _____ ☐ Tools in Hole at _____ Casing Leaks: ☐ Yes ☐ No Depth of casing leak(s): _____
(depth) (depth)Type Completion: ☐ ALT. I ☐ ALT. II Depth of: ☐ DV Tool: _____ w / _____ sacks of cement ☐ Port Collar: _____ w / _____ sack of cement
(depth) (depth)

Packer Type: _____ Size: _____ Inch Set at: _____ Feet

Total Depth: _____ Plug Back Depth: _____ Plug Back Method: _____

Geological Data:**Formation Name**

Formation Top Formation Base

Completion Information

1. _____ At: _____ to _____ Feet Perforation Interval _____ to _____ Feet or Open Hole Interval _____ to _____ Feet

2. _____ At: _____ to _____ Feet Perforation Interval _____ to _____ Feet or Open Hole Interval _____ to _____ Feet

UNDER PENALTY OF PERJURY I HEREBY ATTEST THAT THE INFORMATION CONTAINED HEREIN IS TRUE AND CORRECT TO THE BEST OF MY KNOWLEDGE

Submitted Electronically

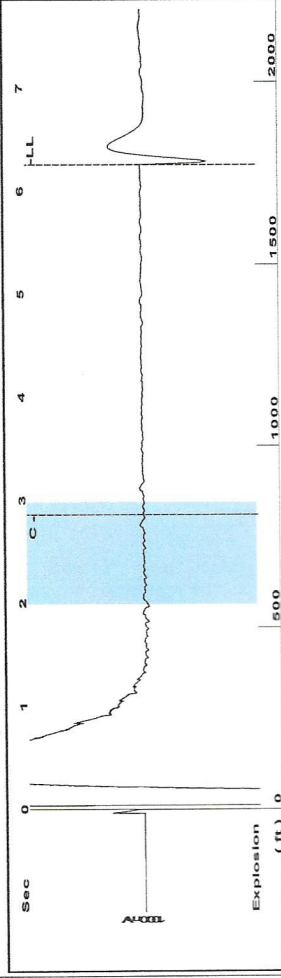
**Do NOT Write in This
Space - KCC USE ONLY**

Date Tested: _____ Results: _____ Date Plugged: _____ Date Repaired: _____ Date Put Back in Service: _____

Review Completed by: _____ Comments: _____

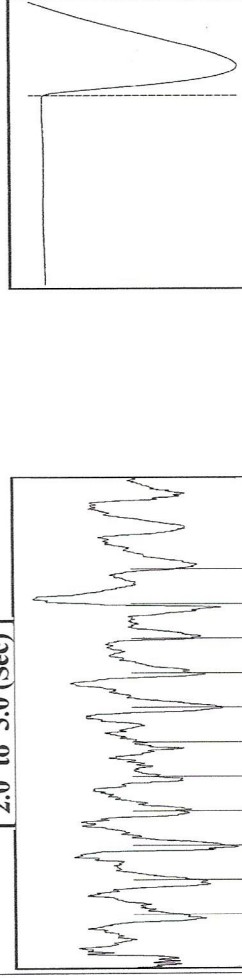
TA Approved: ☐ Yes ☐ Denied Date: _____**Mail to the Appropriate KCC Conservation Office:**

	KCC District Office #1 - 210 E. Frontview, Suite A, Dodge City, KS 67801	Phone 620.682.7933
	KCC District Office #2 - 3450 N. Rock Road, Building 600, Suite 601, Wichita, KS 67226	Phone 316.337.7400
	KCC District Office #3 - 137 E. 21st St., Chanute, KS 66720	Phone 620.902.6450
	KCC District Office #4 - 2301 E. 13th Street, Hays, KS 67601-2651	Phone 785.261.6250

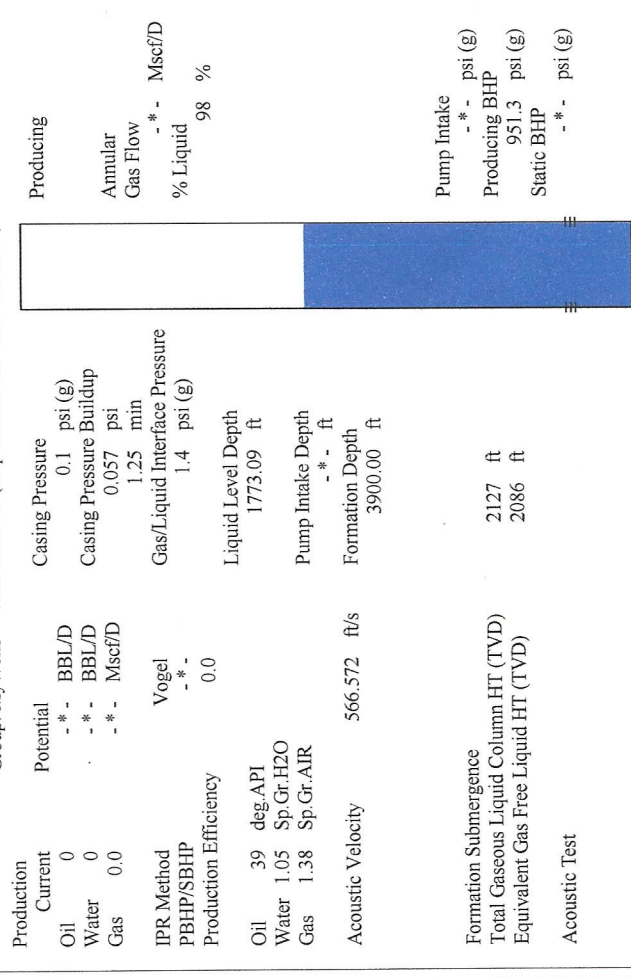


Filter Type High Pass Automatic Collar Count Yes
Manual Acoustic Velocity 567.376 ft/s Manual JTS/sec 14.1844

2.0 to 3.0 (Sec)

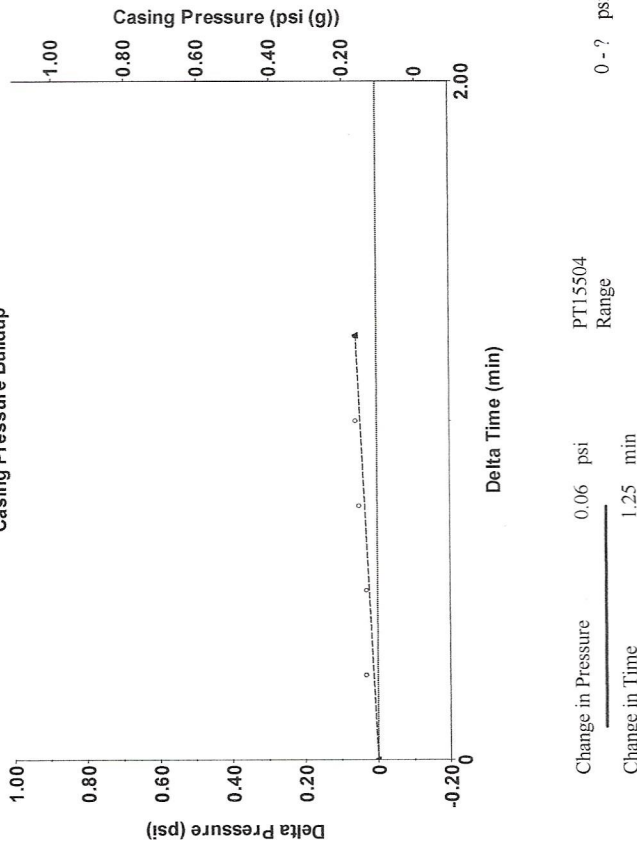


Analysis Method: Automatic

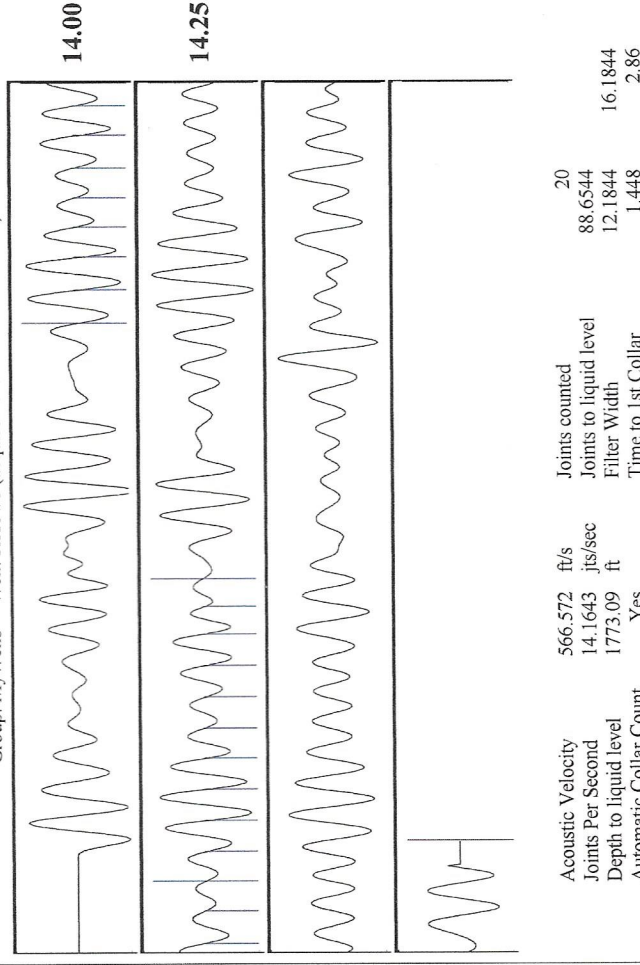


Production Current Potential Casing Pressure 0.1 psi (g)
Oil 0 BBL/D Casing Pressure Buildup 0.057 psi
Water 0 BBL/D Gas/Liquid Interface Pressure 1.25 min
Gas 0.0 Mscf/D 1.4 psi (g)
IPR Method Vogel
PBHP/SBHP - * -
Production Efficiency 0.0
Oil 39 deg API
Water 1.05 Sp.Gr.H2O
Gas 1.38 Sp.Gr.AIR
Acoustic Velocity 566.572 ft/s
Formation Depth 3900.00 ft
Liqud Level Depth 1773.09 ft
Pump Intake Depth - * - ft
Formation Submergence 2127 ft
Total Gaseous Liquid Column HT (TVD) 2086 ft
Equivalent Gas Free Liquid HT (TVD)
Acoustic Test
Pump Intake - * - psi (g)
Producing BHP 951.3 psi (g)
Static BHP - * - psi (g)

Casing Pressure Buildup



Change in Pressure 0.06 psi PTI 5504
Change in Time 1.25 min Range



Acoustic Velocity 566.572 ft/s Joints counted 20
Joints Per Second 14.1643 Joints to liquid level 88.6544
Depth to liquid level 1773.09 ft Filter Width 12.1844
Automatic Collar Count Yes Time to 1st Collar 1.448

February 18, 2020

Chris Peters
Hartman Oil Co., Inc.
10500 E BERKELEY SQ PKWY STE 100
WICHITA, KS 67206-6816

Re: Temporary Abandonment
API 15-203-20184-00-00
ROSE 1-1
NW/4 Sec.01-16S-35W
Wichita County, Kansas

Dear Chris Peters:

"Your temporary abandonment (TA) application for the well listed above has been approved. In accordance with K.A.R. 82-3-111 the TA status of this well will expire 02/18/2021.

- * If you return this well to service or plug it, please notify the District Office.
- * If you sell this well you are required to file a Transfer of Operator form, T-1.
- * If the well will remain temporarily abandoned, you must submit a new TA application, CP-111, before 02/18/2021.

You may contact me at the number above if you have questions.

Very truly yours,

Michael Maier"