

KANSAS CORPORATION COMMISSION
OIL & GAS CONSERVATION DIVISION

TEMPORARY ABANDONMENT WELL APPLICATION

OPERATOR: License#
Name:
Address 1:
Address 2:
City: State: Zip:
Contact Person:
Phone:
Contact Person Email:
Field Contact Person:
Field Contact Person Phone:

API No. 15-
Spot Description:
Sec. Twp. S. R.
GPS Location: Lat: Long:
Datum: NAD27 NAD83 WGS84
County: Elevation:
Lease Name: Well #:
Well Type: Oil Gas OG WSW Other:
SWD Permit #: ENHR Permit #:
Gas Storage Permit #:
Spud Date: Date Shut-In:

Table with 7 columns: Conductor, Surface, Production, Intermediate, Liner, Tubing. Rows include Size, Setting Depth, Amount of Cement, Top of Cement, Bottom of Cement.

Casing Fluid Level from Surface: How Determined? Date:
Casing Squeeze(s): to w / sacks of cement, to w / sacks of cement. Date:
Do you have a valid Oil & Gas Lease? Yes No
Depth and Type: Junk in Hole at Tools in Hole at Casing Leaks: Yes No Depth of casing leak(s):
Type Completion: ALT. I ALT. II Depth of: DV Tool: w / sacks of cement Port Collar: w / sack of cement
Packer Type: Size: Inch Set at: Feet
Total Depth: Plug Back Depth: Plug Back Method:

Geological Data:

Table with 4 columns: Formation Name, Formation Top, Formation Base, Completion Information. Rows 1 and 2.

UNDER PENALTY OF PERJURY I HEREBY ATTEST THAT THE INFORMATION CONTAINED HEREIN IS TRUE AND CORRECT TO THE BEST OF MY KNOWLEDGE

Submitted Electronically

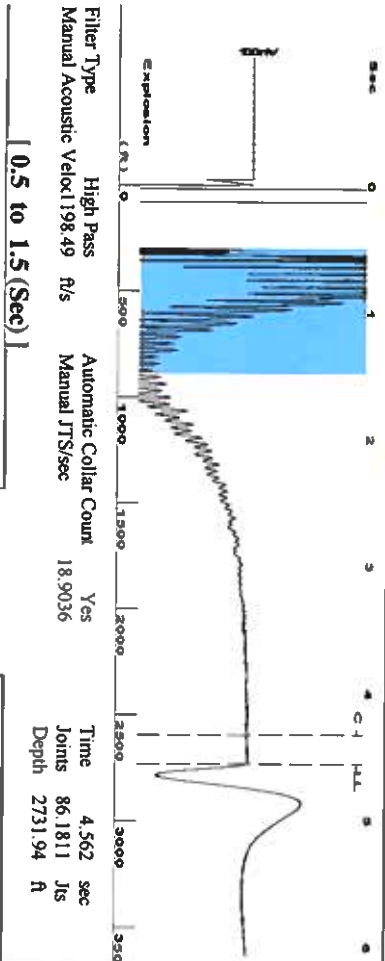
Do NOT Write in This Space - KCC USE ONLY
Date Tested: Results: Date Plugged: Date Repaired: Date Put Back in Service:
Review Completed by: Comments:
TA Approved: Yes Denied Date:

Mail to the Appropriate KCC Conservation Office:

Table with 3 columns: District Office #, Address, Phone. Rows 1-4.

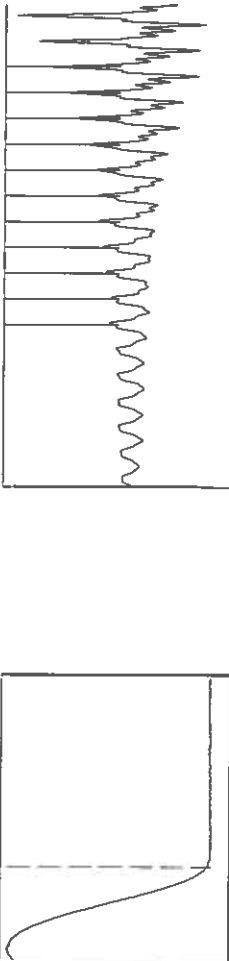


Group: TAD Well: Hampton C-2 (acquired on: 02/11/20 11:41:35)



Filter Type High Pass Automatic Collar Count Yes  
 Manual Acoustic Velocity 198.49 ft/s Manual JTS/sec 18.9036  
 Time 4.562 sec  
 Joints 86.1811 Jts  
 Depth 2731.94 ft

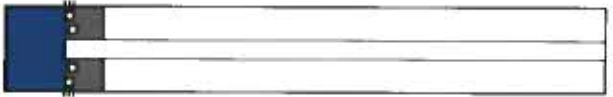
0.5 to 1.5 (Sec)



Analysis Method: Automatic

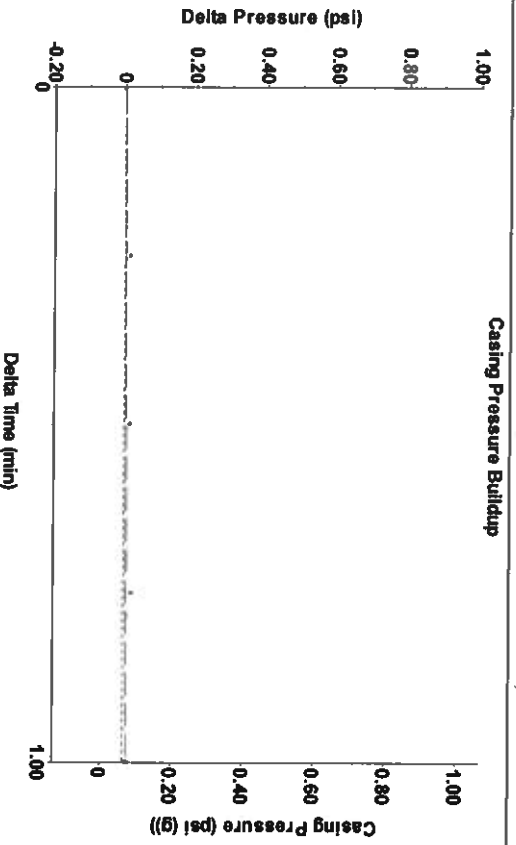
Group: TAD Well: Hampton C-2 (acquired on: 02/11/20 11:41:35)

Production Current	Potential	Casing Pressure	Producing
Oil -*- BBL/D	Oil -*- BBL/D	0.1 psi (g)	Annular Gas Flow
Water -*- BBL/D	Water -*- BBL/D	0.009 psi	% Liquid
Gas -*- MscFD	Gas -*- MscFD	1.00 min	100 %
IPR Method	Vogel	Gas/Liquid Interface Pressure	
PBRHP/SBHP	0.0	1.2 psi (g)	
Production Efficiency		Liquid Level Depth	
		2731.94 ft	
Oil 40 deg API		Pump Intake Depth	
Water 1.05 Sp.Gr. H2O		2973.00 ft	
Gas 0.80 Sp.Gr. AIR		Formation Depth	
Acoustic Velocity	1197.69 ft/s	2948.00 ft	



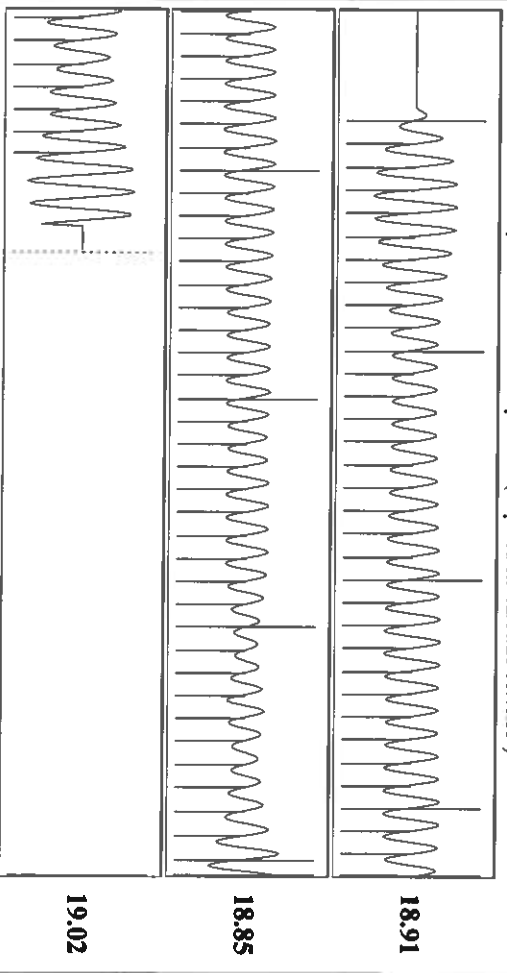
Formation Submergence 241 ft  
 Total Gaseous Liquid Column HT (TVD) 241 ft  
 Equivalent Gas Free Liquid HT (TVD) 241 ft  
 Acoustic Test

Group: TAD Well: Hampton C-2 (acquired on: 02/11/20 11:41:35)



Casing Pressure Buildup  
 Change in Pressure 0.01 psi  
 Change in Time 1.00 min  
 PT8197 Range  
 0 - ? psi

Group: TAD Well: Hampton C-2 (acquired on: 02/11/20 11:41:35)



Acoustic Velocity 1197.69 ft/s  
 Joints Per Second 18.8911 ft/sec  
 Depth to liquid level 2731.94 ft  
 Automatic Collar Count Yes

19.02

18.85

18.91

February 18, 2020

Katherine McClurkan  
Merit Energy Company, LLC  
13727 Noel Road, Suite 1200  
Dallas, TX 75240

Re: Temporary Abandonment  
API 15-067-20340-00-00  
Hampton C 2  
NE/4 Sec.01-29S-36W  
Grant County, Kansas

Dear Katherine McClurkan:

"Your temporary abandonment (TA) application for the well listed above has been approved. In accordance with K.A.R. 82-3-111 the TA status of this well will expire 02/18/2021.

- \* If you return this well to service or plug it, please notify the District Office.
- \* If you sell this well you are required to file a Transfer of Operator form, T-1.
- \* If the well will remain temporarily abandoned, you must submit a new TA application, CP-111, before 02/18/2021.

You may contact me at the number above if you have questions.

Very truly yours,

Michael Maier"