

KANSAS CORPORATION COMMISSION
OIL & GAS CONSERVATION DIVISION

TEMPORARY ABANDONMENT WELL APPLICATION

OPERATOR: License#
Name:
Address 1:
Address 2:
City: State: Zip:
Contact Person:
Phone:
Contact Person Email:
Field Contact Person:
Field Contact Person Phone:

API No. 15-
Spot Description:
Sec. Twp. S. R.
GPS Location: Lat: Long:
Datum: NAD27 NAD83 WGS84
County: Elevation:
Lease Name: Well #:
Well Type: Oil Gas OG WSW Other:
SWD Permit #: ENHR Permit #:
Gas Storage Permit #:
Spud Date: Date Shut-In:

Table with 7 columns: Conductor, Surface, Production, Intermediate, Liner, Tubing. Rows include Size, Setting Depth, Amount of Cement, Top of Cement, Bottom of Cement.

Casing Fluid Level from Surface: How Determined? Date:
Casing Squeeze(s): to w / sacks of cement, to w / sacks of cement. Date:
Do you have a valid Oil & Gas Lease? Yes No
Depth and Type: Junk in Hole at Tools in Hole at Casing Leaks: Yes No Depth of casing leak(s):
Type Completion: ALT. I ALT. II Depth of: DV Tool: w / sacks of cement Port Collar: w / sack of cement
Packer Type: Size: Inch Set at: Feet
Total Depth: Plug Back Depth: Plug Back Method:

Geological Date:

Table with 4 columns: Formation Name, Formation Top, Formation Base, Completion Information. Rows 1 and 2.

UNDER PENALTY OF PERJURY I HEREBY ATTEST THAT THE INFORMATION CONTAINED HEREIN IS TRUE AND CORRECT TO THE BEST OF MY KNOWLEDGE

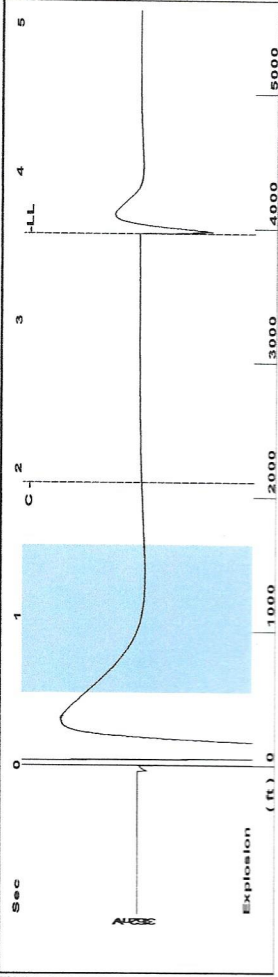
Submitted Electronically

Do NOT Write in This Space - KCC USE ONLY
Date Tested: Results: Date Plugged: Date Repaired: Date Put Back in Service:
Review Completed by: Comments:
TA Approved: Yes Denied Date:

Mail to the Appropriate KCC Conservation Office:

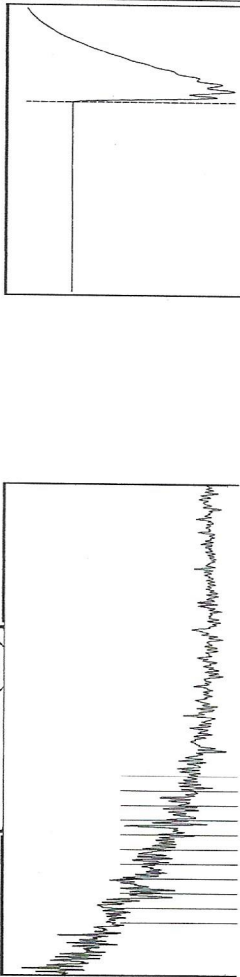
Map of Kansas with 4 numbered regions. Table with 2 columns: Office Address, Phone Number. Rows 1-4.

Group: MyWells Well: Damme #40 (TA) (acquired on: 02/10/20 10:15:24)



Filter Type High Pass Automatic Collar Count Yes
 Manual Acoustic Velo 2113.33 ft/s Manual JTS/sec 33.3333
 Time 3.588 sec
 Joints 125.01 Jts
 Depth 3962.81 ft

[0.5 to 1.5 (Sec)]

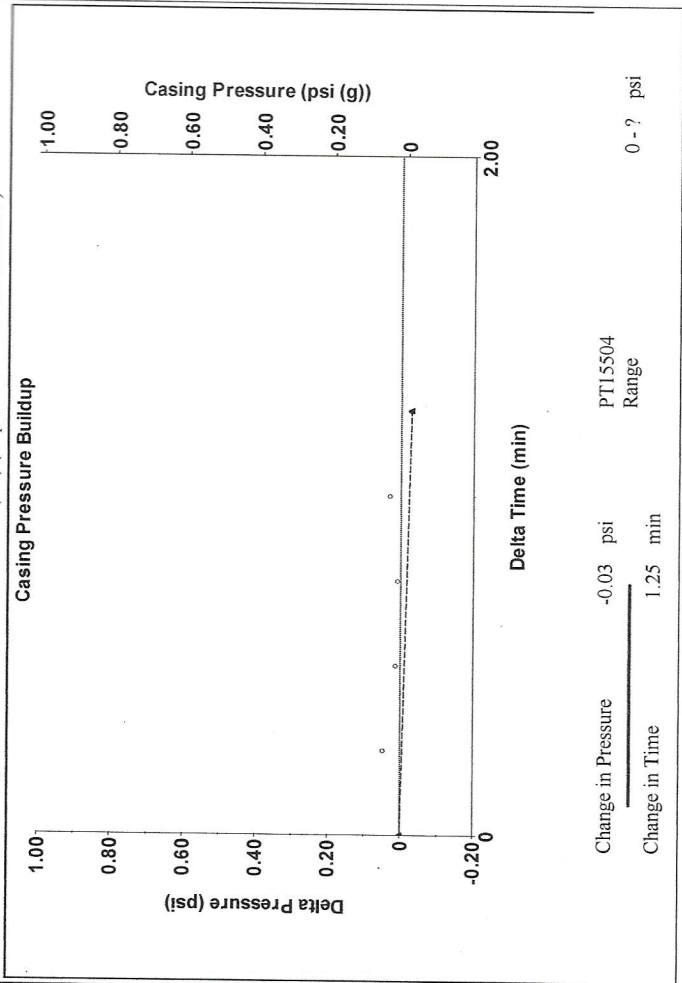


Analysis Method: Automatic

Group: MyWells Well: Damme #40 (TA) (acquired on: 02/10/20 10:15:24)

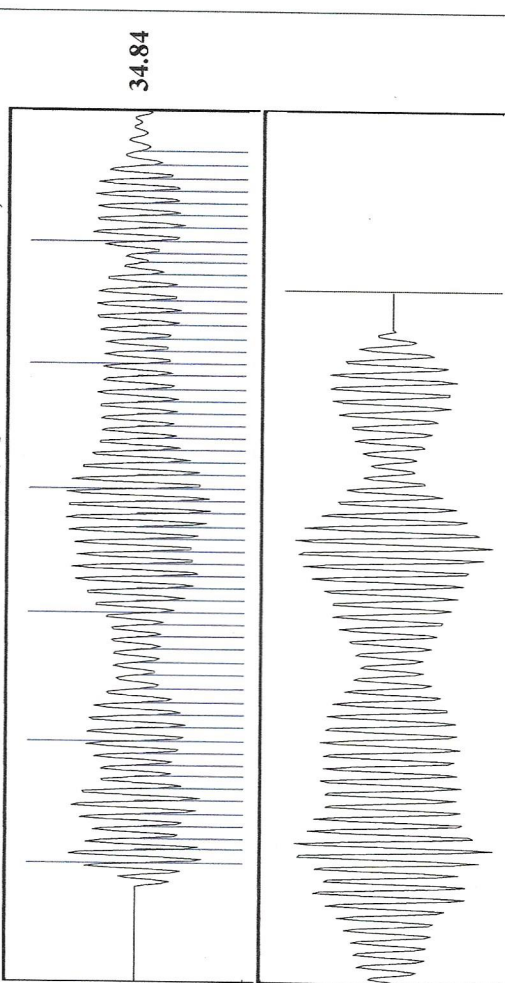
Production	Potential	Casing Pressure	0.0 psi (g)
Current	Oil	Casing Pressure Buildup	-0.028 psi
Water	Gas	Gas/Liquid Interface Pressure	1.1 psi (g)
Gas	IPR Method	Vogel	0.0
	PBHP/SBHP	Production Efficiency	0.0
	Oil	Liquid Level Depth	3962.81 ft
	Water	Tubing Intake Depth	4317.00 ft
	Gas	Acoustic Velocity	2208.92 ft/s
Formation Submergence	Total Gaseous Liquid Column HT (TV D)	354 ft	
Equivalent Gas Free Liquid HT (TV D)	354 ft		
Acoustic Test			
Producing	Annular Gas Flow	% Liquid	100 %
	Tubing Intake	Producing BHP	162.2 psi (g)
	Static BHP		

Group: MyWells Well: Damme #40 (TA) (acquired on: 02/10/20 10:15:24)



Change in Pressure -0.03 psi
 Change in Time 1.25 min
 PT15504 Range

Group: MyWells Well: Damme #40 (TA) (acquired on: 02/10/20 10:15:24)



Acoustic Velocity 2208.92 ft/s
 Joints Per Second 34.8411 jts/sec
 Depth to liquid level 3962.81 ft
 Automatic Collar Count Yes
 Joints counted 57
 Joints to liquid level 125.01
 Filter Width 31.3333
 Time to 1st Collar 0.272
 35.3333
 1.908

Susan K. Duffy, Chair
Shari Feist Albrecht, Commissioner
Dwight D. Keen, Commissioner

Laura Kelly, Governor

February 18, 2020

Kent Strube
Hartman Oil Co., Inc.
10500 E BERKELEY SQ PKWY STE 100
WICHITA, KS 67206

Re: Temporary Abandonment
API 15-055-22070-00-01
DAMME 40
SE/4 Sec.21-22S-33W
Finney County, Kansas

Dear Kent Strube:

"Your temporary abandonment (TA) application for the well listed above has been approved. In accordance with K.A.R. 82-3-111 the TA status of this well will expire 02/18/2021.

- * If you return this well to service or plug it, please notify the District Office.
- * If you sell this well you are required to file a Transfer of Operator form, T-1.
- * If the well will remain temporarily abandoned, you must submit a new TA application, CP-111, before 02/18/2021.

You may contact me at the number above if you have questions.

Very truly yours,

Michael Maier"