

KANSAS CORPORATION COMMISSION
OIL & GAS CONSERVATION DIVISION

TEMPORARY ABANDONMENT WELL APPLICATION

OPERATOR: License#
Name:
Address 1:
Address 2:
City: State: Zip:
Contact Person:
Phone:
Contact Person Email:
Field Contact Person:
Field Contact Person Phone:

API No. 15-
Spot Description:
Sec. Twp. S. R.
GPS Location: Lat: Long:
Datum: NAD27 NAD83 WGS84
County: Elevation:
Lease Name: Well #:
Well Type: Oil Gas OG WSW Other:
SWD Permit #: ENHR Permit #:
Gas Storage Permit #:
Spud Date: Date Shut-In:

Table with 7 columns: Conductor, Surface, Production, Intermediate, Liner, Tubing. Rows include Size, Setting Depth, Amount of Cement, Top of Cement, Bottom of Cement.

Casing Fluid Level from Surface: How Determined? Date:
Casing Squeeze(s): to w / sacks of cement, to w / sacks of cement. Date:
Do you have a valid Oil & Gas Lease? Yes No
Depth and Type: Junk in Hole at Tools in Hole at Casing Leaks: Yes No Depth of casing leak(s):
Type Completion: ALT. I ALT. II Depth of: DV Tool: w / sacks of cement Port Collar: w / sack of cement
Packer Type: Size: Inch Set at: Feet
Total Depth: Plug Back Depth: Plug Back Method:

Geological Data:

Table with 4 columns: Formation Name, Formation Top, Formation Base, Completion Information. Rows 1 and 2.

UNDER PENALTY OF PERJURY I HEREBY ATTEST THAT THE INFORMATION CONTAINED HEREIN IS TRUE AND CORRECT TO THE BEST OF MY KNOWLEDGE

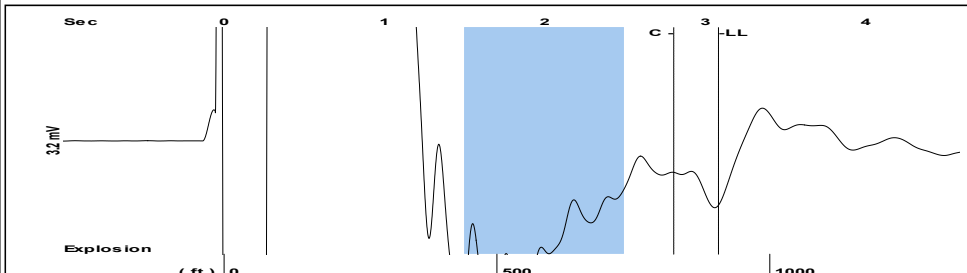
Submitted Electronically

Do NOT Write in This Space - KCC USE ONLY
Date Tested: Results: Date Plugged: Date Repaired: Date Put Back in Service:
Review Completed by: Comments:
TA Approved: Yes Denied Date:

Mail to the Appropriate KCC Conservation Office:

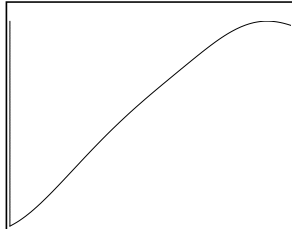
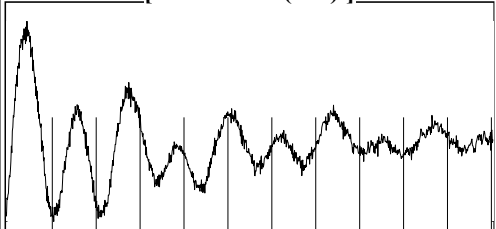
Table with 2 columns: Office Address, Phone. Rows for District Office #1, #2, #3, #4.

Group: MyWells Well: Printz # 1-10 (acquired on: 01/20/20 12:06:25)



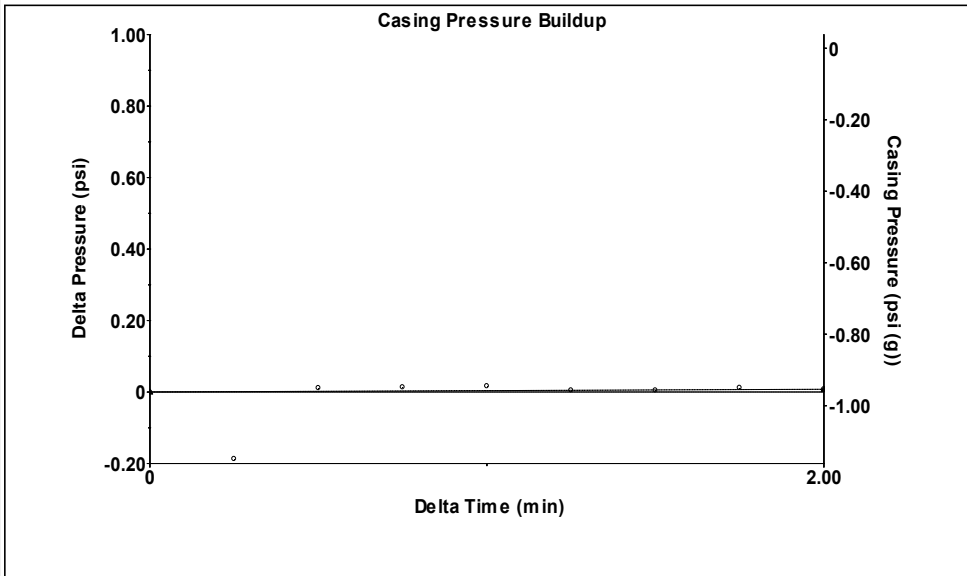
Filter Type High Pass Automatic Collar Count Yes Time 3.083 sec
 Manual Acoustic Velo 683.685 ft/s Manual JTS/sec 11.0988 Joints 29.4061 Jts
 Depth 905.71 ft

[1.5 to 2.5 (Sec)]



Analysis Method: Automatic

Group: MyWells Well: Printz # 1-10 (acquired on: 01/20/20 12:06:25)

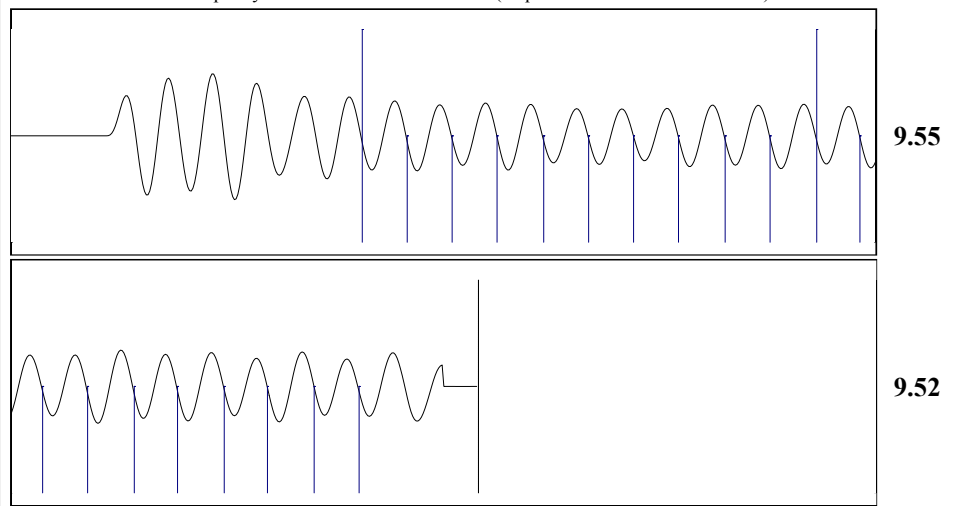


Change in Pressure 0.01 psi PT 17384
 Change in Time 2.00 min Range 0-? psi

Group: MyWells Well: Printz # 1-10 (acquired on: 01/20/20 12:06:25)

<p>Production Current Potential</p> <p>Oil - * - BBL/D</p> <p>Water - * - BBL/D</p> <p>Gas - * - Mscf/D</p> <p>IPR Method Vogel</p> <p>PBHP/SBHP - * -</p> <p>Production Efficiency 0.0</p> <p>Oil 40 deg.API</p> <p>Water 1.05 Sp.Gr.H2O</p> <p>Gas 1.35 Sp.Gr.AIR</p> <p>Acoustic Velocity 587.55 ft/s</p> <p>Formation Submergence</p> <p>Total Gaseous Liquid Column HT (TVD) 4857 ft</p> <p>Equivalent Gas Free Liquid HT (TVD) 4857 ft</p> <p>Acoustic Test</p>	<p>Casing Pressure -1.0 psi (g)</p> <p>Casing Pressure Buildup 0.008 psi</p> <p>Gas/Liquid Interface Pressure -0.4 psi (g)</p> <p>Liquid Level Depth 905.71 ft</p> <p>Pump Intake Depth 5763.00 ft</p> <p>Formation Depth 5763.00 ft</p> <p>Pump Intake 1490.8 psi (g)</p> <p>Producing BHP 1490.8 psi (g)</p> <p>Static BHP - * - psi (g)</p>	<p>Producing</p> <p>Annular Gas Flow 0 Mscf/D</p> <p>% Liquid 100 %</p>	
-----------------------------------------------------------------------------------------------------------------------------------------------------------------------------------------------------------------------------------------------------------------------------------------------------------------------------------------------------------------------------------------------------------------------------------------------------------------------	------------------------------------------------------------------------------------------------------------------------------------------------------------------------------------------------------------------------------------------------------------------------------------------------------------------------------------------------	-------------------------------------------------------------------------	--

Group: MyWells Well: Printz # 1-10 (acquired on: 01/20/20 12:06:25)



Acoustic Velocity 587.55 ft/s Joints counted 19
 Joints Per Second 9.53815 jts/sec Joints to liquid level 29.4061
 Depth to liquid level 905.709 ft Filter Width 9.09878 13.0988
 Automatic Collar Count Yes Time to 1st Collar 0.812 2.804

Susan K. Duffy, Chair
Shari Feist Albrecht, Commissioner
Dwight D. Keen, Commissioner

Laura Kelly, Governor

February 25, 2020

Melody C. Fletcher
Oil Producers, Inc. of Kansas
1710 WATERFRONT PKWY
WICHITA, KS 67206-6603

Re: Temporary Abandonment
API 15-175-21642-00-00
PRINTZ 1-10
NE/4 Sec.10-32S-33W
Seward County, Kansas

Dear Melody C. Fletcher :

"Your temporary abandonment (TA) application for the well listed above has been approved. In accordance with K.A.R. 82-3-111 the TA status of this well will expire 02/25/2021.

- * If you return this well to service or plug it, please notify the District Office.
- * If you sell this well you are required to file a Transfer of Operator form, T-1.
- * If the well will remain temporarily abandoned, you must submit a new TA application, CP-111, before 02/25/2021.

You may contact me at the number above if you have questions.

Very truly yours,

Michael Maier"