

KANSAS CORPORATION COMMISSION
OIL & GAS CONSERVATION DIVISION

Form must be Typed
Form must be signed

TEMPORARY ABANDONMENT WELL APPLICATION

All blanks must be complete

OPERATOR: License#
Name:
Address 1:
Address 2:
City: State: Zip:
Contact Person:
Phone:
Contact Person Email:
Field Contact Person:
Field Contact Person Phone:

API No. 15-
Spot Description:
Sec. Twp. S. R.
GPS Location: Lat: Long:
Datum: NAD27 NAD83 WGS84
County: Elevation:
Lease Name: Well #:
Well Type: Oil Gas OG WSW Other:
SWD Permit #: ENHR Permit #:
Gas Storage Permit #:
Spud Date: Date Shut-In:

Table with 7 columns: Conductor, Surface, Production, Intermediate, Liner, Tubing. Rows include Size, Setting Depth, Amount of Cement, Top of Cement, Bottom of Cement.

Casing Fluid Level from Surface: How Determined? Date:
Casing Squeeze(s): to w / sacks of cement, to w / sacks of cement. Date:
Do you have a valid Oil & Gas Lease? Yes No
Depth and Type: Junk in Hole at Tools in Hole at Casing Leaks: Yes No Depth of casing leak(s):
Type Completion: ALT. I ALT. II Depth of: DV Tool: w / sacks of cement Port Collar: w / sack of cement
Packer Type: Size: Inch Set at: Feet
Total Depth: Plug Back Depth: Plug Back Method:

Geological Data:

Table with 4 columns: Formation Name, Formation Top, Formation Base, Completion Information. Rows 1 and 2.

UNDER PENALTY OF PERJURY I HEREBY ATTEST THAT THE INFORMATION CONTAINED HEREIN IS TRUE AND CORRECT TO THE BEST OF MY KNOWLEDGE

Submitted Electronically

Do NOT Write in This Space - KCC USE ONLY
Date Tested: Results: Date Plugged: Date Repaired: Date Put Back in Service:
Review Completed by: Comments:
TA Approved: Yes Denied Date:

Mail to the Appropriate KCC Conservation Office:

Table with 2 columns: Office Address, Phone. Rows for District Office #1, #2, #3, #4.

General

Well ID 125026
 Well Turner 3406 5-7H
 Company Sandridge
 Operator - * -
 Lease Name Turner 3406 5-7H
 Elevation 1309.00 ft
 Production Method Other
 Dataset Description
 Second Shot

Comment

Surface Unit

Manufacturer - * -
 Unit Class Conventional
 Unit API Number - * -
 Measured Stroke Length - * - in
 Rotation CW
 Counter Balance Effect (Weights Level) - * - Klb
 Weight Of Counter Weights 2000 lb

Prime Mover

Motor Type Electric
 Rated HP - * - HP
 Run Time 24 hr/day
 MFG/Comment
 - * -

Electric Motor Parameters

Rated Full Load AMPS - * -
 Rated Full Load RPM - * -
 Synchronous RPM 1200
 Voltage - * -
 Hertz 60
 Phase 3
 Power Consumption 5
 Power Demand 8 \$/KW

Tubulars

Tubing OD 2.875 in
 Casing OD 7.000 in
 Average Joint Length 31.700 ft
 Anchor Depth - * - ft
 Kelly Bushing 19.50 ft

Pump

Plunger Diameter - * - in
 Pump Intake Depth 5207.00 ft
 **Total Rod Length < Pump Depth

Polished Rod

Polished Rod Diameter - * - in

Rod String

	Top Taper	Taper 2	Taper 3	Taper 4	Taper 5	Taper 6
Rod Type	- * -	- * -	- * -	- * -	- * -	- * -
Rod Length	- * -	- * -	- * -	- * -	- * -	- * - ft
Rod Diameter	- * -	- * -	- * -	- * -	- * -	- * - in
Rod Weight	0.0	0.0	0.0	0.0	0.0	0.0 lb

Total Rod Length 0
 Total Rod Weight 0.00

Damp Up 0.051035
 Damp Down 0.051035

Conditions

Pressure

Static BHP 579.1 psi (g)
 Static BHP Method Acoustic
 Static BHP Date 02/19/2020

Producing BHP - * - psi (g)
 Producing BHP Method - * -
 Producing BHP Date - * -
 Formation Depth 5208.00 ft

Surface Producing Pressures

Tubing Pressure - * - psi (g)
 Casing Pressure 1.3 psi (g)

Casing Pressure Buildup

Change in Pressure 0.2 psi
 Over Change in Time 1.00 min

Production

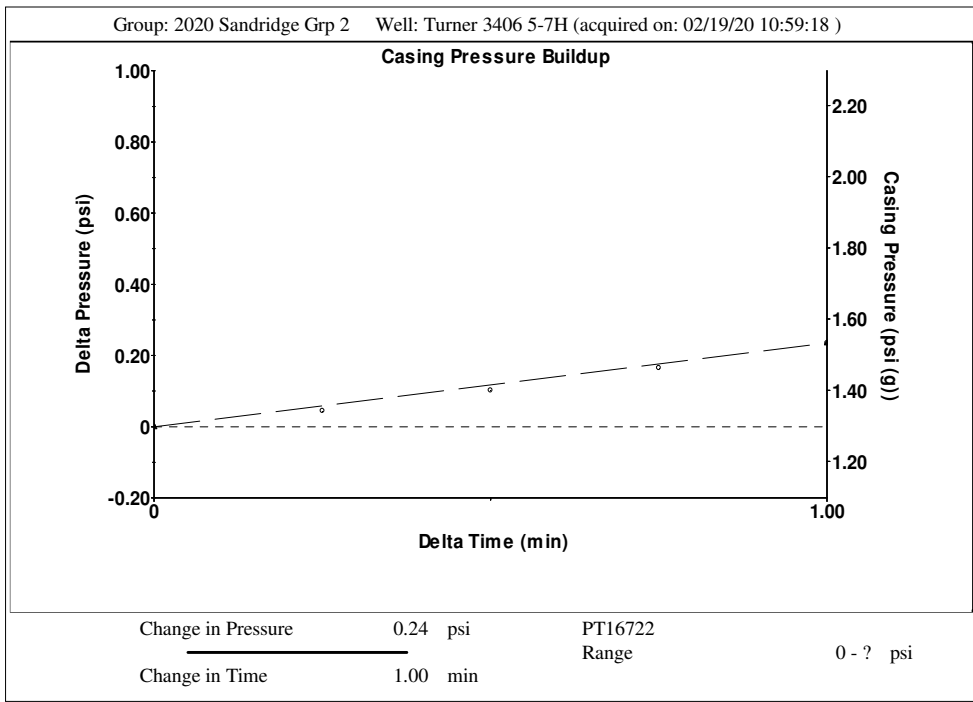
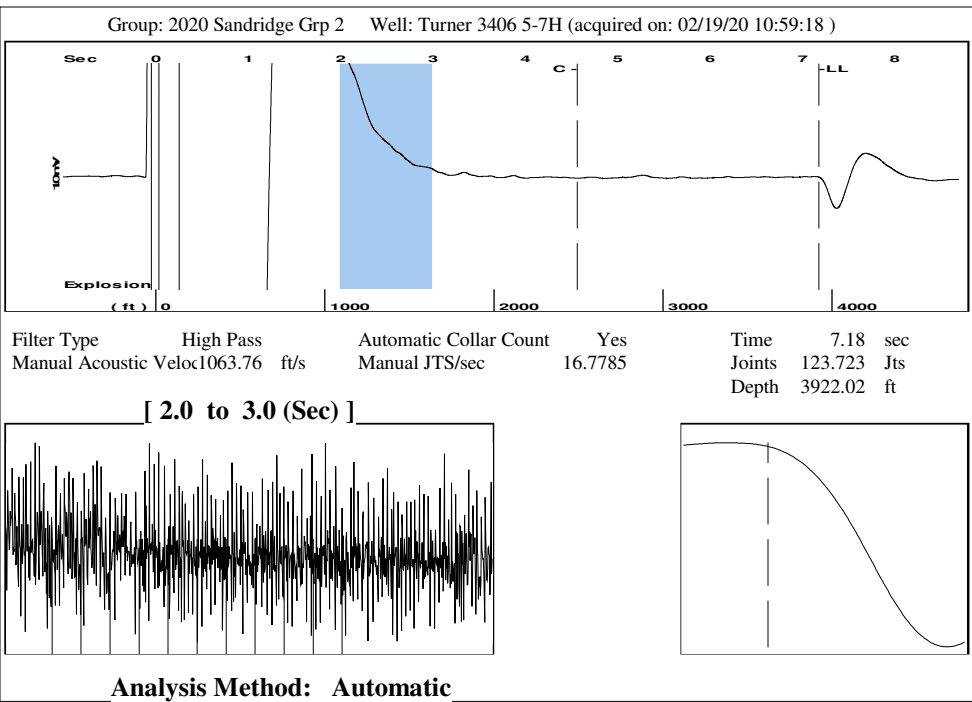
Oil Production 0 BBL/D
 Water Production 1 BBL/D
 Gas Production - * - Mscf/D
 Production Date 12/10/2019

Temperatures

Surface Temperature 70 deg F
 Bottomhole Temperature 150 deg F

Fluid Properties

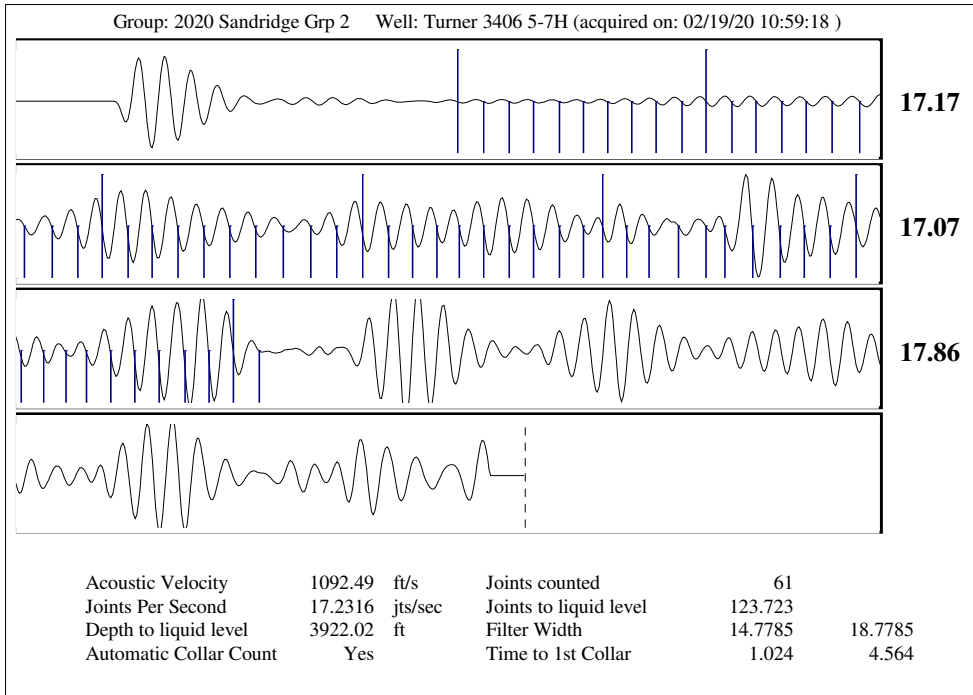
Oil API 40 deg.API
 Water Specific Gravity 1.05 Sp.Gr.H2O



Group: 2020 Sandridge Grp 2 Well: Turner 3406 5-7H (acquired on: 02/19/20 10:59:18)

Production		Potential		Casing Pressure		
Oil	0	- * -	BBL/D	Casing Pressure	1.3 psi (g)	
Water	1	- * -	BBL/D	Casing Pressure Buildup	0.2 psi	
Gas	- * -	- * -	Mscf/D	Gas/Liquid Interface Pressure	1.00 min	
IPR Method		Vogel		Liquid Level Depth		Tubing Intake Depth 5207.00 ft Formation Depth 5208.00 ft
PBHP/SBHP		- * -		Casing Pressure Buildup	1.00 min	
Production Efficiency		0.0		Gas/Liquid Interface Pressure		Static BHP 579.1 psi (g)
Oil	40 deg.API			3.3 psi (g)		
Water	1.05 Sp.Gr.H2O					
Gas	0.89 Sp.Gr.AIR					
Acoustic Velocity		1092.49 ft/s				

Turner 3406 5-7H



March 10, 2020

Alex Rizzo
SandRidge Exploration and Production LLC
123 ROBERT S. KERR AVE
OKLAHOMA CITY, OK 73102-6406

Re: Temporary Abandonment
API 15-077-21918-01-00
TURNER 3406 5-7H
SE/4 Sec.07-34S-06W
Harper County, Kansas

Dear Alex Rizzo:

"Your temporary abandonment (TA) application for the well listed above has been approved. In accordance with K.A.R. 82-3-111 the TA status of this well will expire 03/10/2021.

- * If you return this well to service or plug it, please notify the District Office.
- * If you sell this well you are required to file a Transfer of Operator form, T-1.
- * If the well will remain temporarily abandoned, you must submit a new TA application, CP-111, before 03/10/2021.

You may contact me at the number above if you have questions.

Very truly yours,

Steve VanGieson"