

KANSAS CORPORATION COMMISSION
OIL & GAS CONSERVATION DIVISION

TEMPORARY ABANDONMENT WELL APPLICATION

OPERATOR: License#
Name:
Address 1:
Address 2:
City: State: Zip:
Contact Person:
Phone:
Contact Person Email:
Field Contact Person:
Field Contact Person Phone:

API No. 15-
Spot Description:
Sec. Twp. S. R.
GPS Location: Lat: Long:
Datum: NAD27 NAD83 WGS84
County: Elevation:
Lease Name: Well #:
Well Type: Oil Gas OG WSW Other:
SWD Permit #: ENHR Permit #:
Gas Storage Permit #:
Spud Date: Date Shut-In:

Table with 7 columns: Conductor, Surface, Production, Intermediate, Liner, Tubing. Rows include Size, Setting Depth, Amount of Cement, Top of Cement, Bottom of Cement.

Casing Fluid Level from Surface: How Determined? Date:
Casing Squeeze(s): to w / sacks of cement, to w / sacks of cement. Date:
Do you have a valid Oil & Gas Lease? Yes No
Depth and Type: Junk in Hole at Tools in Hole at Casing Leaks: Yes No Depth of casing leak(s):
Type Completion: ALT. I ALT. II Depth of: DV Tool: w / sacks of cement Port Collar: w / sack of cement
Packer Type: Size: Inch Set at: Feet
Total Depth: Plug Back Depth: Plug Back Method:

Geological Data:

Table with 4 columns: Formation Name, Formation Top, Formation Base, Completion Information. Rows 1 and 2.

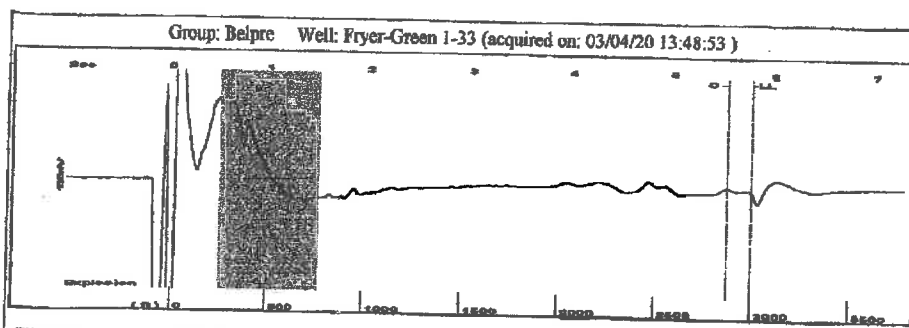
UNDER PENALTY OF PERJURY I HEREBY ATTEST THAT THE INFORMATION CONTAINED HEREIN IS TRUE AND CORRECT TO THE BEST OF MY KNOWLEDGE

Submitted Electronically

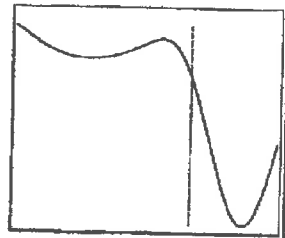
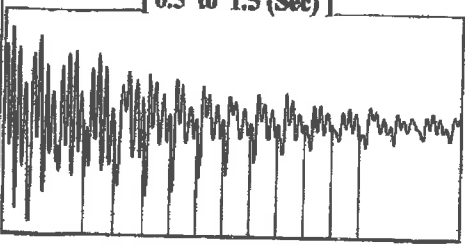
Do NOT Write in This Space - KCC USE ONLY
Date Tested: Results: Date Plugged: Date Repaired: Date Put Back in Service:
Review Completed by: Comments:
TA Approved: Yes Denied Date:

Mail to the Appropriate KCC Conservation Office:

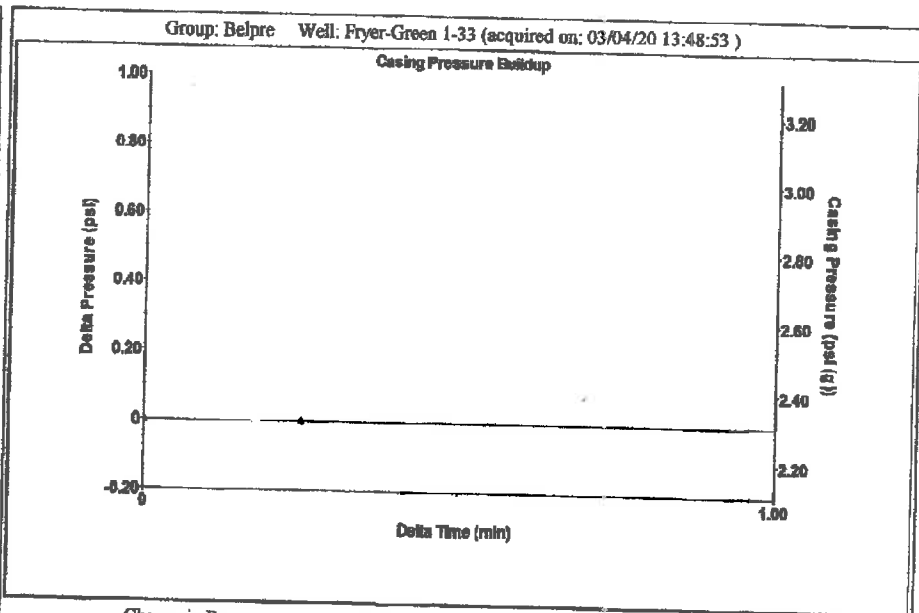
Map of Kansas with 4 numbered districts. Table with 2 columns: Office Address, Phone Number. Rows 1-4.



Filter Type High Pass Automatic Collar Count Yes Time 5.776 sec
 Manual Acoustic Velo 1049.67 ft/s Manual JTS/sec 16.5563 Joints 94.5951 Jts
 Depth 2998.66 ft

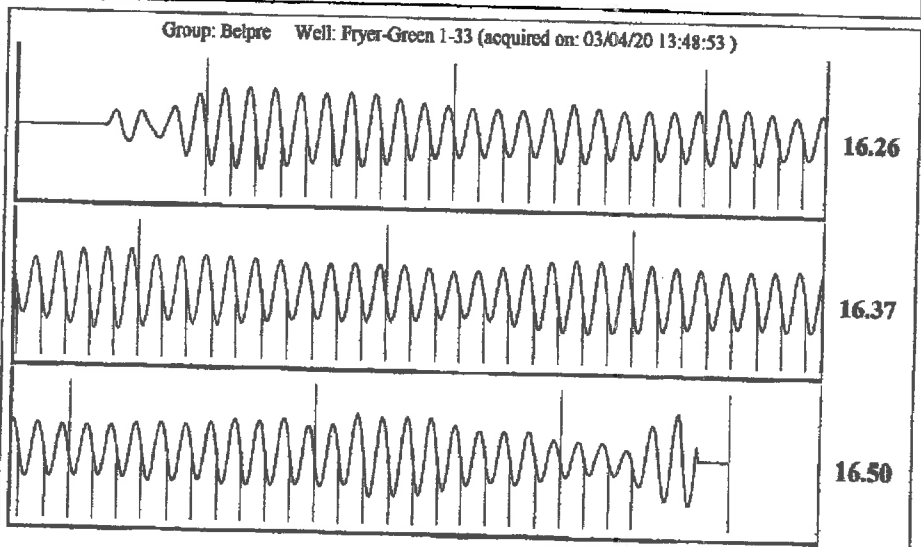


Analysis Method: Automatic



Change in Pressure -0.00 psi PT13440
 Change in Time 0.25 min Range 0 - ? psi

Group: Belpre Well: Fryer-Green 1-33 (acquired on: 03/04/20 13:48:53)			Producing Annular Gas Flow 0 Msc/D % Liquid 100 %	
Production Current	Potential			Casing Pressure 2.3 psi (g)
Oil - * -	- * - BBL/D			Casing Pressure Buildup -0.0 psi
Water - * -	- * - BBL/D			0.25 min
Gas - * -	- * - Msc/D			Gas/Liquid Interface Pressure 4.0 psi (g)
IPR Method	Vogel			Liquid Level Depth 2998.66 ft
PBHP/SBHP - * -	- * -			Pump Intake Depth 4327.00 ft
Production Efficiency 0.0				Formation Depth 4328.00 ft
Oil 40 deg.API				Pump Intake 452.1 psi (g)
Water 1.05 Sp.Gr.H2O				Producing BHP 452.5 psi (g)
Gas 0.94 Sp.Gr.AIR		Static BHP - * - psi (g)		
Acoustic Velocity 1038.32 ft/s				
Formation Submergence				
Total Gaseous Liquid Column HT (TVD) 1328 ft				
Equivalent Gas Free Liquid HT (TVD) 1328 ft				
Acoustic Test				



Acoustic Velocity	1038.32 ft/s	Joints counted	83
Joints Per Second	16.3773 jts/sec	Joints to liquid level	94.5951
Depth to liquid level	2998.66 ft	Filter Width	14.5563
Automatic Collar Count	Yes	Time to 1st Collar	0.468
			18.5563
			5.536

March 10, 2020

Loveness Mpanje
F. G. Holl Company L.L.C.
9431 E CENTRAL STE 100
WICHITA, KS 67206-2563

Re: Temporary Abandonment
API 15-145-20861-00-00
FRYER-GREENE 1-33
SE/4 Sec.33-23S-17W
Pawnee County, Kansas

Dear Loveness Mpanje:

"Your temporary abandonment (TA) application for the well listed above has been approved. In accordance with K.A.R. 82-3-111 the TA status of this well will expire 03/10/2021.

- * If you return this well to service or plug it, please notify the District Office.
- * If you sell this well you are required to file a Transfer of Operator form, T-1.
- * If the well will remain temporarily abandoned, you must submit a new TA application, CP-111, before 03/10/2021.

You may contact me at the number above if you have questions.

Very truly yours,

Michael Maier"