

KANSAS CORPORATION COMMISSION
OIL & GAS CONSERVATION DIVISION

Form must be Typed
Form must be signed

TEMPORARY ABANDONMENT WELL APPLICATION

All blanks must be complete

OPERATOR: License#
Name:
Address 1:
Address 2:
City: State: Zip:
Contact Person:
Phone:
Contact Person Email:
Field Contact Person:
Field Contact Person Phone:

API No. 15-
Spot Description:
Sec. Twp. S. R.
GPS Location: Lat: Long:
Datum: NAD27 NAD83 WGS84
County: Elevation:
Lease Name: Well #:
Well Type: Oil Gas OG WSW Other:
SWD Permit #: ENHR Permit #:
Gas Storage Permit #:
Spud Date: Date Shut-In:

Table with 7 columns: Conductor, Surface, Production, Intermediate, Liner, Tubing. Rows include Size, Setting Depth, Amount of Cement, Top of Cement, Bottom of Cement.

Casing Fluid Level from Surface: How Determined? Date:
Casing Squeeze(s): to w / sacks of cement, to w / sacks of cement. Date:
Do you have a valid Oil & Gas Lease? Yes No
Depth and Type: Junk in Hole at Tools in Hole at Casing Leaks: Yes No Depth of casing leak(s):
Type Completion: ALT. I ALT. II Depth of: DV Tool: w / sacks of cement Port Collar: w / sack of cement
Packer Type: Size: Inch Set at: Feet
Total Depth: Plug Back Depth: Plug Back Method:

Geological Date:

Table with 4 columns: Formation Name, Formation Top, Formation Base, Completion Information. Rows 1 and 2.

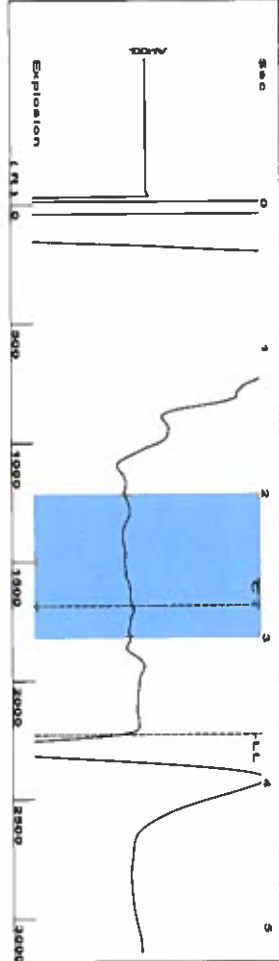
UNDER PENALTY OF PERJURY I HEREBY ATTEST THAT THE INFORMATION CONTAINED HEREIN IS TRUE AND CORRECT TO THE BEST OF MY KNOWLEDGE

Submitted Electronically

Do NOT Write in This Space - KCC USE ONLY
Date Tested: Results: Date Plugged: Date Repaired: Date Put Back in Service:
Review Completed by: Comments:
TA Approved: Yes Denied Date:

Mail to the Appropriate KCC Conservation Office:

Table with 3 columns: District Office #, Address, Phone. Rows 1-4.



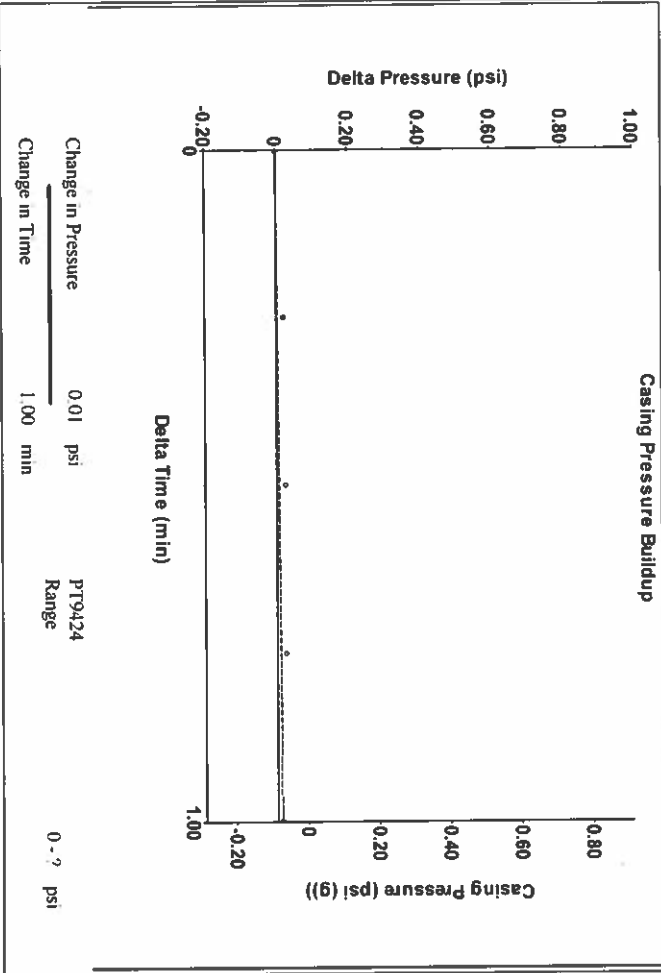
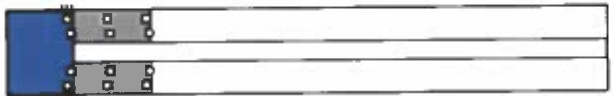
Filter Type High Pass Automatic Collar Count Yes
 Manual Acoustic Velocity 275.65 ft/s Manual JTS/sec 20.1207
 Time 3.659 sec
 Joints 70.2528 Jts
 Depth 2227.01 ft



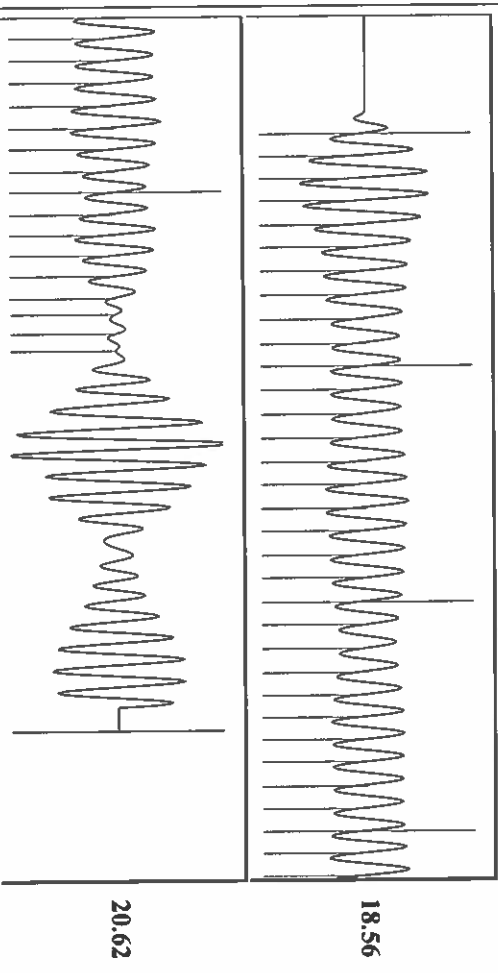
Analysis Method: Automatic

Group: TAD WELLS Well: TUCKER J-1 (acquired on: 03/19/20 12:28:20)

Production	Potential	Casing Pressure	Producing
Oil -*-	-*- BBL/D	-0.1 psi (g)	Annular Gas Flow 0 Mscf/D
Water -*-	-*- BB/D	Casing Pressure Buildup 0.013 psi	% Liquid 100 %
Gas -*-	-*- Mscf/D	1.00 min	
IPR Method PBHP/SBHP	Vogel -*-	Gas/Liquid Interface Pressure 0.8 psi (g)	
Production Efficiency 0.0		Liquid Level Depth 2227.01 ft	
Oil 40 deg API		Pump Intake Depth 2662.00 ft	
Water 1.05 Sp-Gr H2O		Formation Depth 2700.00 ft	
Gas 0.78 Sp-Gr AIR			
Acoustic Velocity 1217.28 ft/s			
Formation Submergence			
Total Gaseous Liquid Column HT (TVD) 435 ft			
Equivalent Gas Free Liquid HT (TVD) 435 ft			
Acoustic Test			



Group: TAD WELLS Well: TUCKER J-1 (acquired on: 03/19/20 12:28:20)



Acoustic Velocity 1217.28 ft/s
 Joints Per Second 19.2 Jts/sec
 Depth to liquid level 2227.01 ft
 Automatic Collar Count Yes

Joints counted 48
 Joints to liquid level 70.2528
 Filter Width 18.1207
 Time to 1st Collar 2.772

March 20, 2020

Katherine McClurkan
Merit Energy Company, LLC
13727 Noel Road, Suite 1200
Dallas, TX 75240

Re: Temporary Abandonment
API 15-129-20644-00-00
Tucker J 1
NE/4 Sec.12-33S-41W
Morton County, Kansas

Dear Katherine McClurkan:

"Your temporary abandonment (TA) application for the well listed above has been approved. In accordance with K.A.R. 82-3-111 the TA status of this well will expire 03/20/2021.

- * If you return this well to service or plug it, please notify the District Office.
- * If you sell this well you are required to file a Transfer of Operator form, T-1.
- * If the well will remain temporarily abandoned, you must submit a new TA application, CP-111, before 03/20/2021.

You may contact me at the number above if you have questions.

Very truly yours,

Scott Alberg"