

KANSAS CORPORATION COMMISSION
OIL & GAS CONSERVATION DIVISION

TEMPORARY ABANDONMENT WELL APPLICATION

OPERATOR: License#
Name:
Address 1:
Address 2:
City: State: Zip:
Contact Person:
Phone:
Contact Person Email:
Field Contact Person:
Field Contact Person Phone:

API No. 15-
Spot Description:
Sec. Twp. S. R.
GPS Location: Lat: Long:
Datum: NAD27 NAD83 WGS84
County: Elevation:
Lease Name: Well #:
Well Type: Oil Gas OG WSW Other:
SWD Permit #: ENHR Permit #:
Gas Storage Permit #:
Spud Date: Date Shut-In:

Table with 7 columns: Conductor, Surface, Production, Intermediate, Liner, Tubing. Rows include Size, Setting Depth, Amount of Cement, Top of Cement, Bottom of Cement.

Casing Fluid Level from Surface: How Determined? Date:
Casing Squeeze(s): to w / sacks of cement, to w / sacks of cement. Date:
Do you have a valid Oil & Gas Lease? Yes No
Depth and Type: Junk in Hole at Tools in Hole at Casing Leaks: Yes No Depth of casing leak(s):
Type Completion: ALT. I ALT. II Depth of: DV Tool: w / sacks of cement Port Collar: w / sack of cement
Packer Type: Size: Inch Set at: Feet
Total Depth: Plug Back Depth: Plug Back Method:

Geological Data:

Table with 4 columns: Formation Name, Formation Top, Formation Base, Completion Information. Rows 1 and 2.

UNDER PENALTY OF PERJURY I HEREBY ATTEST THAT THE INFORMATION CONTAINED HEREIN IS TRUE AND CORRECT TO THE BEST OF MY KNOWLEDGE

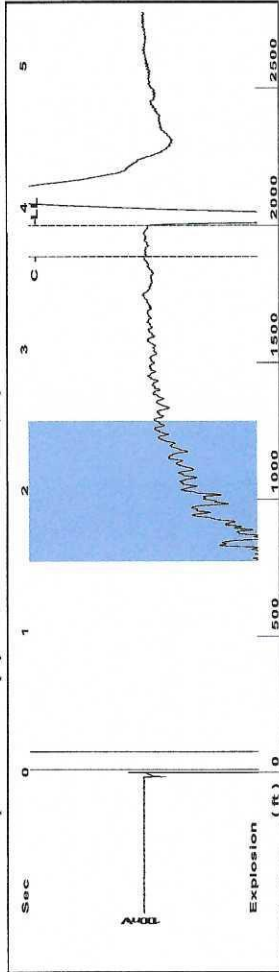
Submitted Electronically

Do NOT Write in This Space - KCC USE ONLY
Date Tested: Results: Date Plugged: Date Repaired: Date Put Back in Service:
Review Completed by: Comments:
TA Approved: Yes Denied Date:

Mail to the Appropriate KCC Conservation Office:

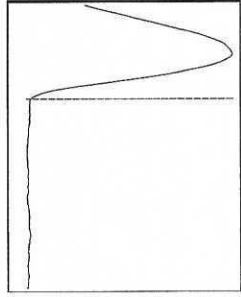
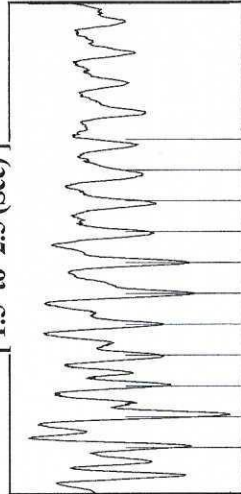
Table with 3 columns: District Office #, Address, Phone. Rows 1-4.

Group: Investment Equipment Well: MORRIS #2 (acquired on: 03/23/20 11:27:18)



Filter Type High Pass Automatic Collar Count Yes Time 3.876 sec  
 Manual Acoustic Velo 1006.35 ft/s Manual JTS/sec 15.873 Joints 63.0921 Jts  
 Depth 2000.02 ft

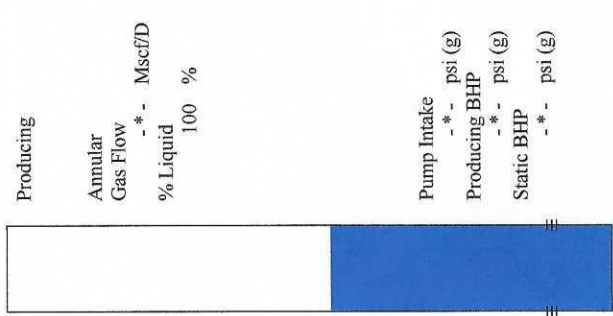
[ 1.5 to 2.5 (Sec) ]



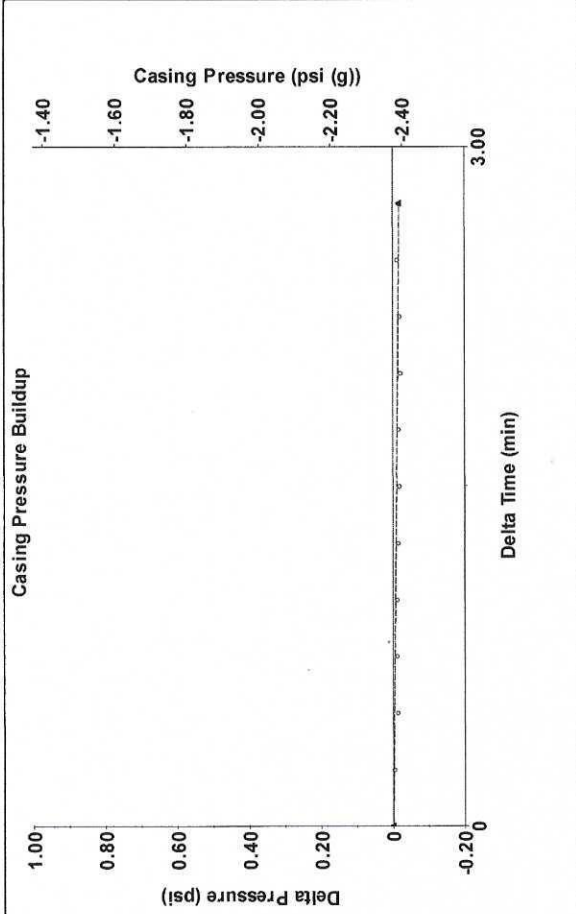
**Analysis Method: Automatic**

Group: Investment Equipment Well: MORRIS #2 (acquired on: 03/23/20 11:27:18)

Production	Potential	Casing Pressure	-2.4 psi (g)
Oil - * -	BBL/D	Casing Pressure Buildup	-0.0 psi
Water - * -	BBL/D	Gas/Liquid Interface Pressure	- * - psi (g)
Gas - * -	Mscf/D	Liquid Level Depth	2000.02 ft
IPR Method	Vogel	Pump Intake Depth	- * - ft
PBHP/SBHP	- * -	Formation Depth	3672.00 ft
Production Efficiency	0.0	Acoustic Velocity	1032 ft/s
Oil 40 deg.API		Formation Submergence	- * - ft
Water 1.05 Sp.Gr.H2O		Total Gaseous Liquid Column HT (TVD)	- * - ft
Gas 0.94 Sp.Gr.AIR		Equivalent Gas Free Liquid HT (TVD)	- * - ft
		Acoustic Test	

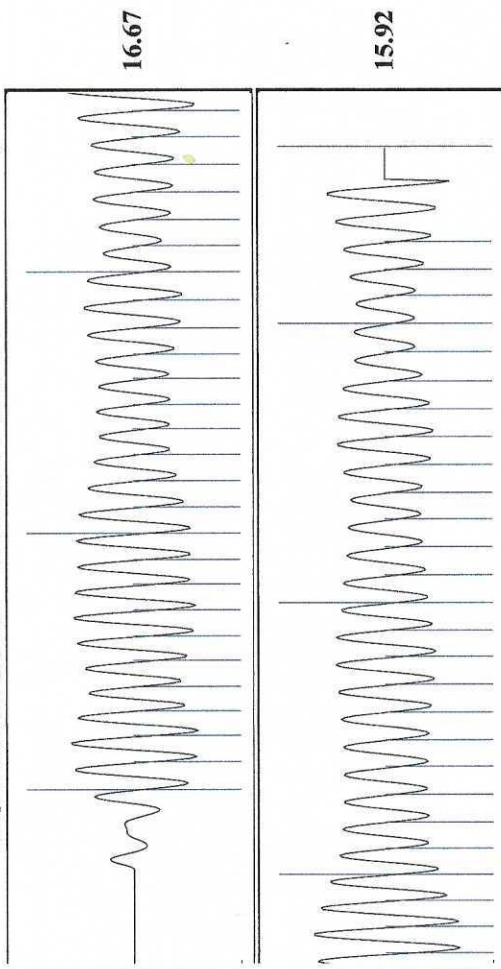


Group: Investment Equipment Well: MORRIS #2 (acquired on: 03/23/20 11:27:18)



Change in Pressure -0.02 psi PT6454 Range  
 Change in Time 2.75 min

Group: Investment Equipment Well: MORRIS #2 (acquired on: 03/23/20 11:27:18)



Acoustic Velocity 1032 ft/s Joints counted 53  
 Joints Per Second 16.2776 Jts/sec Joints to liquid level 63.0921  
 Depth to liquid level 2000.02 ft Filter Width 17.873  
 Automatic Collar Count Yes Time to 1st Collar 3.656

March 30, 2020

James Chisholm  
Investment Equipment LLC  
412 W. PLATTE AVE.  
FT MORGAN, CO 80701-2650

Re: Temporary Abandonment  
API 15-065-22921-00-00  
MORRIS 2  
SW/4 Sec.27-07S-23W  
Graham County, Kansas

Dear James Chisholm:

"Your temporary abandonment (TA) application for the well listed above has been approved. In accordance with K.A.R. 82-3-111 the TA status of this well will expire 03/30/2021.

- \* If you return this well to service or plug it, please notify the District Office.
- \* If you sell this well you are required to file a Transfer of Operator form, T-1.
- \* If the well will remain temporarily abandoned, you must submit a new TA application, CP-111, before 03/30/2021.

You may contact me at the number above if you have questions.

Very truly yours,

RICHARD WILLIAMS"