

KANSAS CORPORATION COMMISSION  
OIL & GAS CONSERVATION DIVISION

TEMPORARY ABANDONMENT WELL APPLICATION

OPERATOR: License# \_\_\_\_\_  
 Name: \_\_\_\_\_  
 Address 1: \_\_\_\_\_  
 Address 2: \_\_\_\_\_  
 City: \_\_\_\_\_ State: \_\_\_\_\_ Zip: \_\_\_\_\_ + \_\_\_\_\_  
 Contact Person: \_\_\_\_\_  
 Phone: ( \_\_\_\_\_ ) \_\_\_\_\_  
 Contact Person Email: \_\_\_\_\_  
 Field Contact Person: \_\_\_\_\_  
 Field Contact Person Phone: ( \_\_\_\_\_ ) \_\_\_\_\_

API No. 15- \_\_\_\_\_  
 Spot Description: \_\_\_\_\_  
 \_\_\_\_\_ - \_\_\_\_\_ - \_\_\_\_\_ - \_\_\_\_\_ Sec. \_\_\_\_\_ Twp. \_\_\_\_\_ S. R. \_\_\_\_\_  E  W  
 \_\_\_\_\_ feet from  N /  S Line of Section  
 \_\_\_\_\_ feet from  E /  W Line of Section  
 GPS Location: Lat: \_\_\_\_\_, Long: \_\_\_\_\_  
(e.g. xx.xxxxx) (e.g. -xxx.xxxxx)  
 Datum:  NAD27  NAD83  WGS84  
 County: \_\_\_\_\_ Elevation: \_\_\_\_\_  GL  KB  
 Lease Name: \_\_\_\_\_ Well #: \_\_\_\_\_  
 Well Type: (check one)  Oil  Gas  OG  WSW  Other: \_\_\_\_\_  
 SWD Permit #: \_\_\_\_\_  ENHR Permit #: \_\_\_\_\_  
 Gas Storage Permit #: \_\_\_\_\_  
 Spud Date: \_\_\_\_\_ Date Shut-In: \_\_\_\_\_

	Conductor	Surface	Production	Intermediate	Liner	Tubing
Size						
Setting Depth						
Amount of Cement						
Top of Cement						
Bottom of Cement						

Casing Fluid Level from Surface: \_\_\_\_\_ How Determined? \_\_\_\_\_ Date: \_\_\_\_\_  
 Casing Squeeze(s): \_\_\_\_\_ to \_\_\_\_\_ w / \_\_\_\_\_ sacks of cement, \_\_\_\_\_ to \_\_\_\_\_ w / \_\_\_\_\_ sacks of cement. Date: \_\_\_\_\_  
(top) (bottom) (top) (bottom)  
 Do you have a valid Oil & Gas Lease?  Yes  No  
 Depth and Type:  Junk in Hole at \_\_\_\_\_  Tools in Hole at \_\_\_\_\_ Casing Leaks:  Yes  No Depth of casing leak(s): \_\_\_\_\_  
(depth) (depth)  
 Type Completion:  ALT. I  ALT. II Depth of:  DV Tool: \_\_\_\_\_ w / \_\_\_\_\_ sacks of cement  Port Collar: \_\_\_\_\_ w / \_\_\_\_\_ sack of cement  
(depth) (depth)  
 Packer Type: \_\_\_\_\_ Size: \_\_\_\_\_ Inch Set at: \_\_\_\_\_ Feet  
 Total Depth: \_\_\_\_\_ Plug Back Depth: \_\_\_\_\_ Plug Back Method: \_\_\_\_\_

**Geological Data:**

Formation Name	Formation Top	Formation Base	Completion Information
1. _____	At: _____	to _____ Feet	Perforation Interval _____ to _____ Feet or Open Hole Interval _____ to _____ Feet
2. _____	At: _____	to _____ Feet	Perforation Interval _____ to _____ Feet or Open Hole Interval _____ to _____ Feet

UNDER PENALTY OF PERJURY I HEREBY ATTEST THAT THE INFORMATION CONTAINED HEREIN IS TRUE AND CORRECT TO THE BEST OF MY KNOWLEDGE

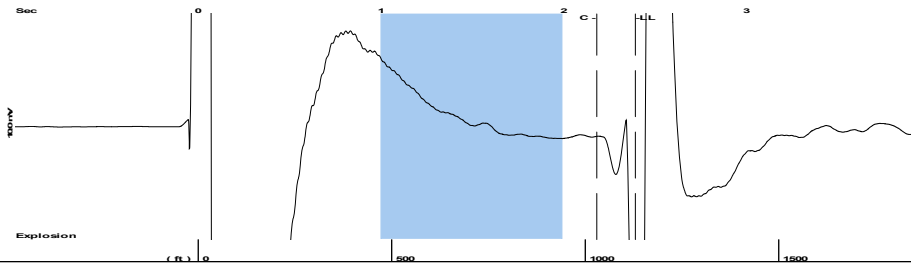
Submitted Electronically

<b>Do NOT Write in This Space - KCC USE ONLY</b>	Date Tested: _____	Results: _____	Date Plugged: _____	Date Repaired: _____	Date Put Back in Service: _____
	Review Completed by: _____ Comments: _____				
TA Approved: <input type="checkbox"/> Yes <input type="checkbox"/> Denied Date: _____					

Mail to the Appropriate KCC Conservation Office:

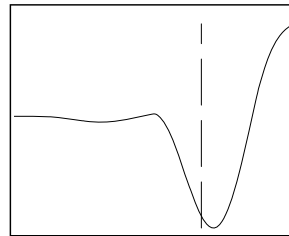
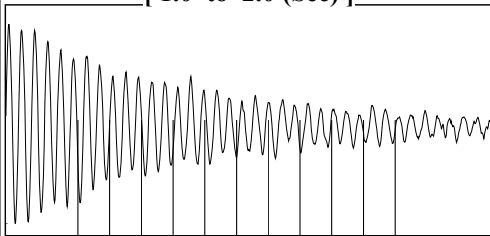
	KCC District Office #1 - 210 E. Frontview, Suite A, Dodge City, KS 67801	Phone 620.682.7933
	KCC District Office #2 - 3450 N. Rock Road, Building 600, Suite 601, Wichita, KS 67226	Phone 316.337.7400
	KCC District Office #3 - 137 E. 21st St., Chanute, KS 66720	Phone 620.902.6450
	KCC District Office #4 - 2301 E. 13th Street, Hays, KS 67601-2651	Phone 785.261.6250

Group: E Miller B Well: E Miller B #62 (acquired on: 03/25/20 13:07:58 )



Filter Type High Pass Automatic Collar Count Yes Time 2.391 sec  
 Manual Acoustic Velo 972.393 ft/s Manual JTS/sec 15.3374 Joints 35.6275 Jts  
 Depth 1129.39 ft

[ 1.0 to 2.0 (Sec) ]



**Analysis Method: Automatic**

Group: E Miller B Well: E Miller B #62 (acquired on: 03/25/20 13:07:58 )

NO PRESSURE DATA AVAILABLE

Change in Pressure 0.00 psi PT6067  
 Range 0 - ? psi  
 Change in Time 0.00 min

Group: E Miller B Well: E Miller B #62 (acquired on: 03/25/20 13:07:58 )

**Production**  
 Current Potential  
 Oil - \* - BBL/D  
 Water - \* - BBL/D  
 Gas - \* - Mscf/D

IPR Method Vogel  
 PBHP/SBHP - \* -  
 Production Efficiency 0.0

Oil 36 deg.API  
 Water 1.08 Sp.Gr.H2O  
 Gas 1.00 Sp.Gr.AIR

Acoustic Velocity 944.702 ft/s

Formation Submergence  
 Total Gaseous Liquid Column HT (TVD) 2051 ft  
 Equivalent Gas Free Liquid HT (TVD) 2051 ft

Acoustic Test

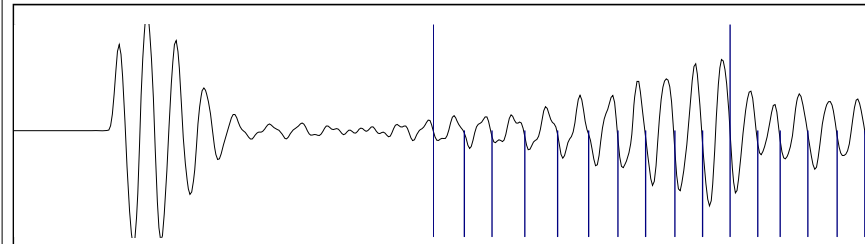
Casing Pressure 74.0 psi (g)  
 Casing Pressure Buildup - \* - psi  
 - \* - min  
 Gas/Liquid Interface Pressure 77.7 psi (g)  
 Liquid Level Depth 1129.39 ft  
 Pump Intake Depth 3125.00 ft  
 Formation Depth 3180.00 ft



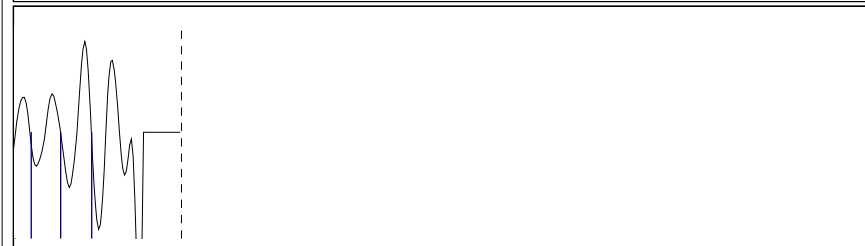
**Producing**  
 Annular Gas Flow 0 Mscf/D  
 % Liquid 100 %

Pump Intake 1011.0 psi (g)  
 Producing BHP 1036.7 psi (g)  
 Static BHP 669.4 psi (g)

Group: E Miller B Well: E Miller B #62 (acquired on: 03/25/20 13:07:58 )



15.00



14.42

Acoustic Velocity 944.702 ft/s Joints counted 18  
 Joints Per Second 14.9007 jts/sec Joints to liquid level 35.6275  
 Depth to liquid level 1129.39 ft Filter Width 13.3374 17.3374  
 Automatic Collar Count Yes Time to 1st Collar 0.972 2.18

March 31, 2020

Gavin Ramsay  
Fossil Creek Energy, LLC  
PO BOX 915  
RUSSELL, KS 67665

Re: Temporary Abandonment  
API 15-167-22684-00-01  
E MILLER B 62-1-30  
SW/4 Sec.30-14S-13W  
Russell County, Kansas

Dear Gavin Ramsay:

"Your temporary abandonment (TA) application for the well listed above has been approved. In accordance with K.A.R. 82-3-111 the TA status of this well will expire 03/31/2021.

- \* If you return this well to service or plug it, please notify the District Office.
- \* If you sell this well you are required to file a Transfer of Operator form, T-1.
- \* If the well will remain temporarily abandoned, you must submit a new TA application, CP-111, before 03/31/2021.

You may contact me at the number above if you have questions.

Very truly yours,

RICHARD WILLIAMS"