





Form	ACO1 - Well Completion
Operator	Jones Oil, LLC
Well Name	DUNN 1
Doc ID	1401908

All Electric Logs Run

SONIC
POR
ML
DIL

Form	ACO1 - Well Completion
Operator	Jones Oil, LLC
Well Name	DUNN 1
Doc ID	1401908

#### Tops

Name	Top	Datum
HEEB	3378	-1435
TORONTO	3400	-1457
DOUGLAS	3416	-1473
BL	3520	-1577
KC	3538	-1595
B	3553	-1610
F	3598	-1655
H	3653	-1710
K	3723	-1780
SIMP	3943	-2000
ARB	4004	-2061



Form	ACO1 - Well Completion
Operator	Jones Oil, LLC
Well Name	DUNN 1
Doc ID	1401908

#### Casing

Purpose Of String	Size Hole Drilled	Size Casing Set	Weight	Setting Depth	Type Of Cement	Number of Sacks Used	Type and Percent Additives
Surface	12.25	8.625	24	639	COMMON	400	CELLOFLAKE/CALCIUM

**MUD LOG**  
**WellSight Systems**  
Scale 1:240 (5"=100') Imperial  
Measured Depth Log

Well Name: Dunn #1  
API: 15-185-24007-00-00  
Location: N2-SE-NE-NE of Sec. 24 - Twp. 23 - R14W  
License Number: 30116  
Spud Date: 2/2/2018  
Surface Coordinates: 969 FNL - 330 FEL  
Long: -98.8036542 Lat: 38.0406516  
Bottom Hole Coordinates: Same as surface coordinates  
Ground Elevation (ft): 1936 K.B. Elevation (ft): 1943  
Logged Interval (ft): 3000 To: 4040 Total Depth (ft): 4040  
Formation: Arbuckle Dolomite @ Total Depth  
Type of Drilling Fluid: Chemical Drispac (Andys)

Region: Kansas

Drilling Completed: 2/10/2018

Printed by MudLog from WellSight Systems 1-800-447-1534 www.WellSight.com

**OPERATOR**

Company: Jones Oil, LLC  
Address: 112 N Gray St, St. John KS 67576

**GEOLOGIST**

Name: Keaton Jones  
Company: Rockhound Petroleum, LLC  
Address: P.O Box 43 St. John KS 67576  
(620)-546-4010

Dunn #1 Comparison to						
Formation	Staub 1-24	Nannie	Devore 1	Budge2	Malin	Gray2
ANH	-24	-28	-14	-18	10	-27
Heeb	19	-4	18	-1	-4	-5
BL	19	4	28	1	0	0
KCL	17	2	28	-1	0	-5
Viola	22	N/A	19	-15	N/A	-17
ARB	29	N/A	26	-2	N/A	-11

Serial #: 6755

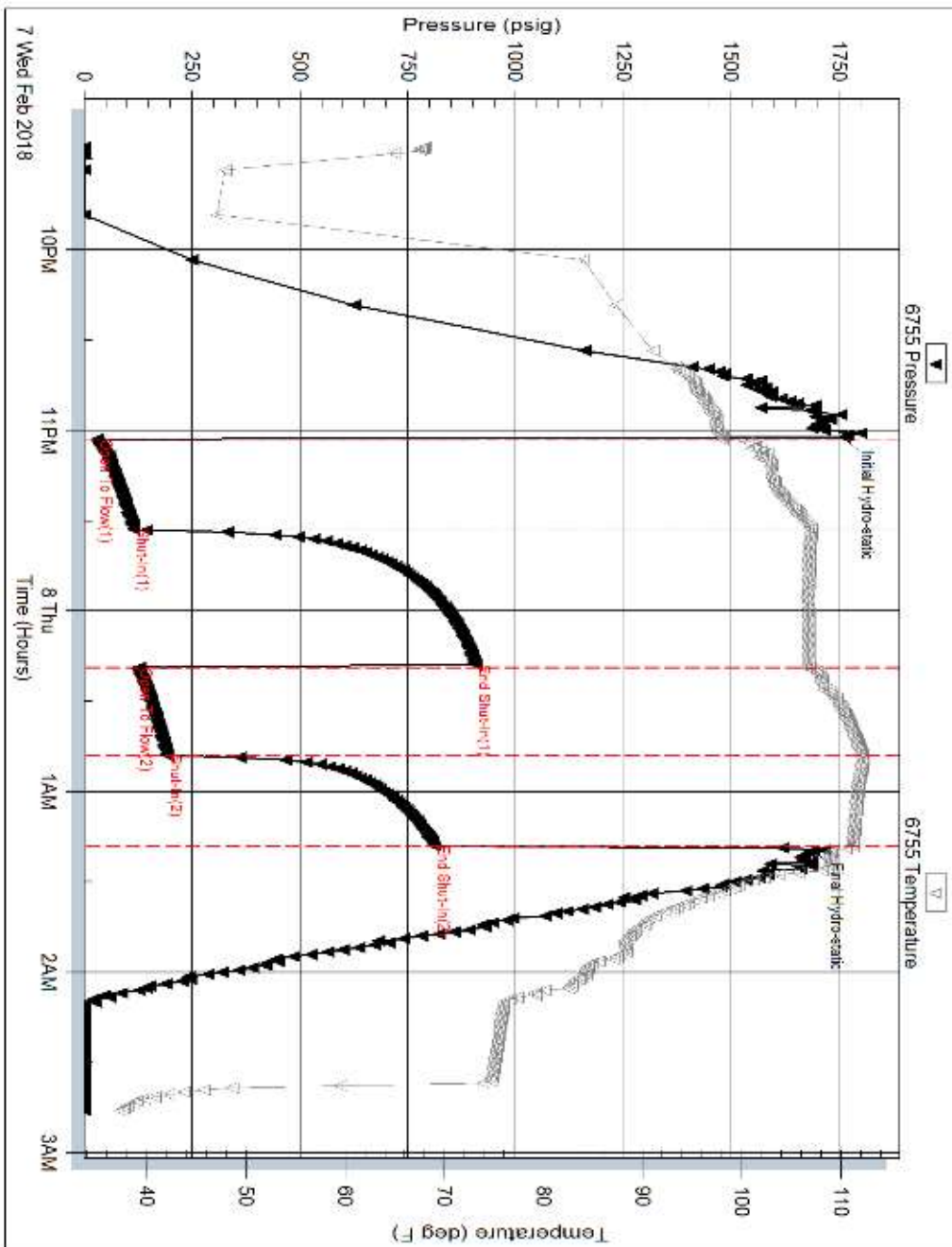
Inside

Jones Oil LLC

Drill #1

DST Test Number: 1

## Pressure vs. Time



Tribble Testing, Inc

Ref No: 63053

Printed: 2018-02-08 @ 07:39:26

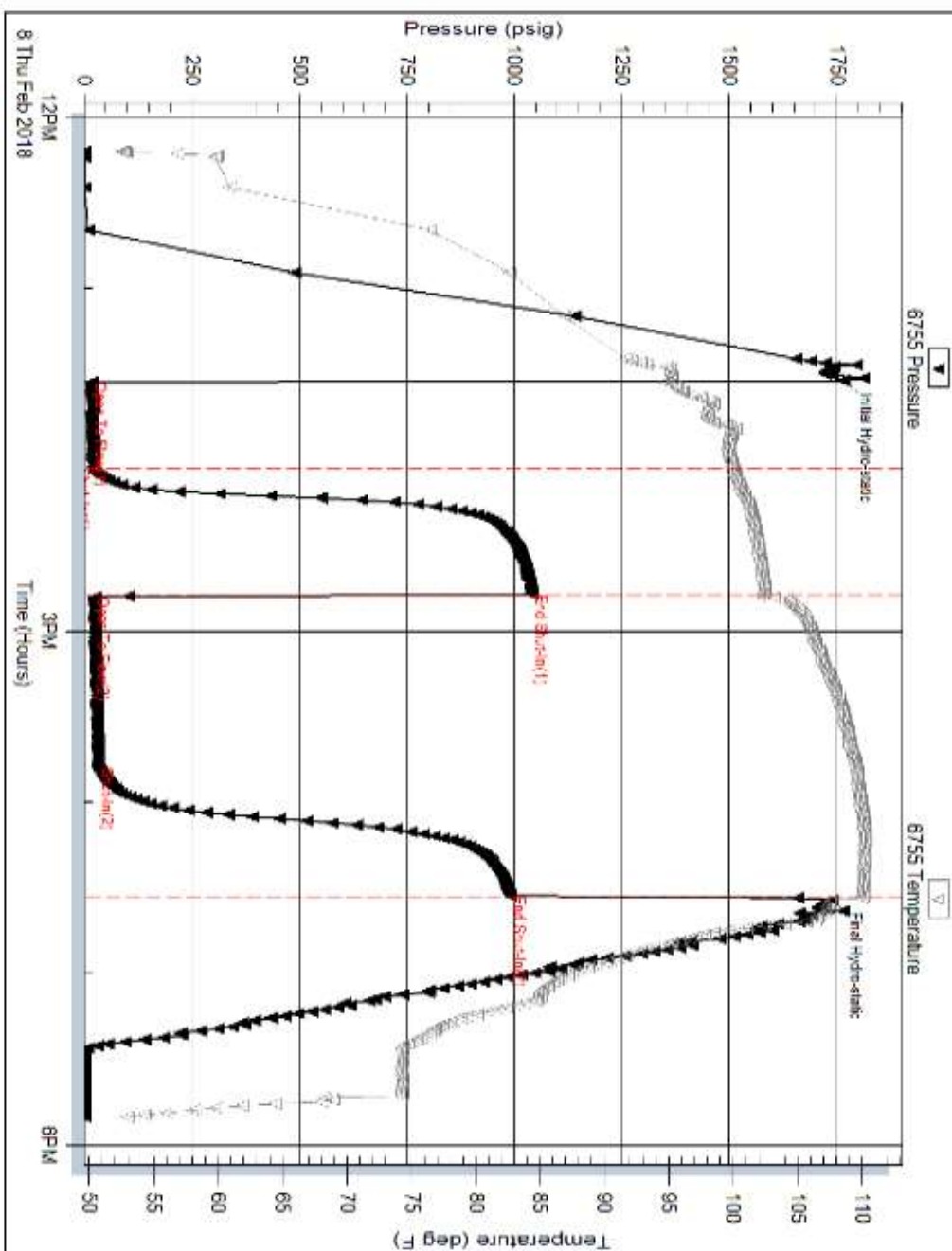
Serial # 6733

Inside Jones Oil LLC

Run #1

DST Test Number: 2

## Pressure vs. Time



Tricella Testing, Inc.

Ref. No. 63064

Printed: 2018-02-08 @ 20:01:42

Serial #: 6755

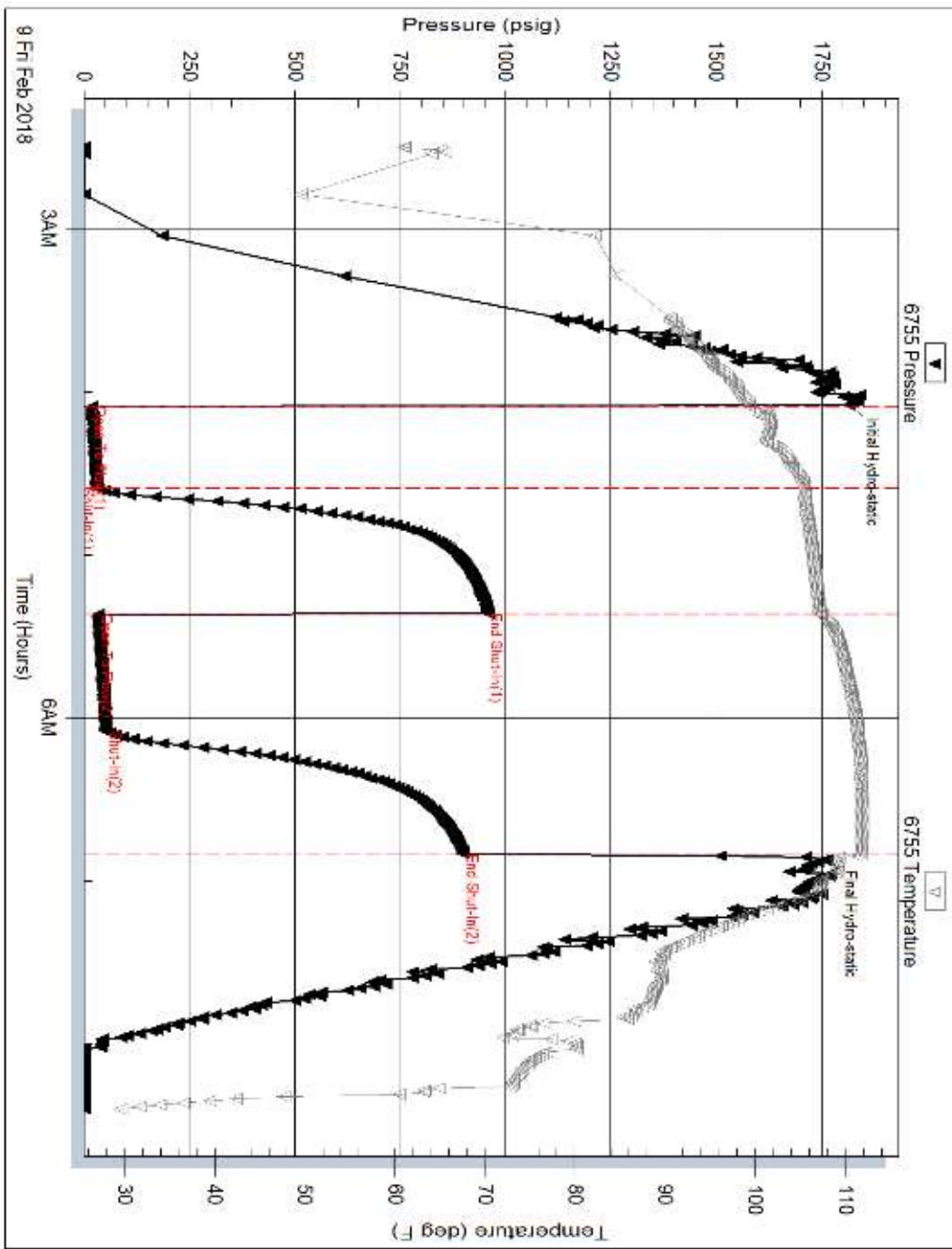
Inside

Jones Oil LLC

Drill #1

DST Test Number: 3

## Pressure vs. Time

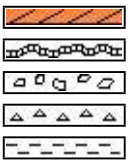


Tribble Testing, Inc

Ref No: 63055

Printed: 2018-02-08 @ 05:26:46

## ROCK TYPES



Anhy  
Bent  
Brec  
Cht  
Clyst



Coal  
Congl  
Dol  
Gyp  
Igne



Lmst  
Meta  
Mrlst  
Salt  
Shale



Shcol  
Shgy  
Sltst  
Ss  
Till



Cfs

## ACCESSORIES

### MINERAL

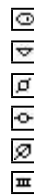
Anhy  
Arggrn  
Arg  
Bent  
Bit  
Brecfrag  
Calc  
Carb  
Chtdk  
Chtlit  
Dol  
Feldspar  
Ferrpel  
Ferr  
Glau



Gyp  
Hvymin  
Kaol  
Marl  
Minxl  
Nodule  
Phos  
Pyr  
Salt  
Sandy  
Silt  
Sil  
Sulphur  
Tuff

### FOSSIL

Algae  
Amph  
Belm  
Bioclst  
Brach  
Bryozoa  
Cephal  
Coral  
Crin  
Echin  
Fish  
Foram  
Fossil  
Gastro  
Oolite



Ostra  
Pelec  
Pellet  
Pisolite  
Plant  
Strom

### STRINGER

Anhy  
Arg  
Bent  
Coal  
Dol  
Gyp  
Ls  
Mrst

Sltstrg  
Ssstrg

### TEXTURE

Boundst  
Chalky  
Cryxln  
Earthy  
Finexln  
Grainst  
Lithogr  
Microxln  
Mudst  
Packst  
Wackest

## OTHER SYMBOLS

### POROSITY

Earthy  
Fenest  
Fracture  
Inter  
Moldic  
Organic  
Pinpoint



Vuggy

### SORTING

Well  
Moderate  
Poor

### ROUNDING

Rounded  
Subrnd  
Subang  
Angular



Even  
Spotted  
Ques

### INTERVAL

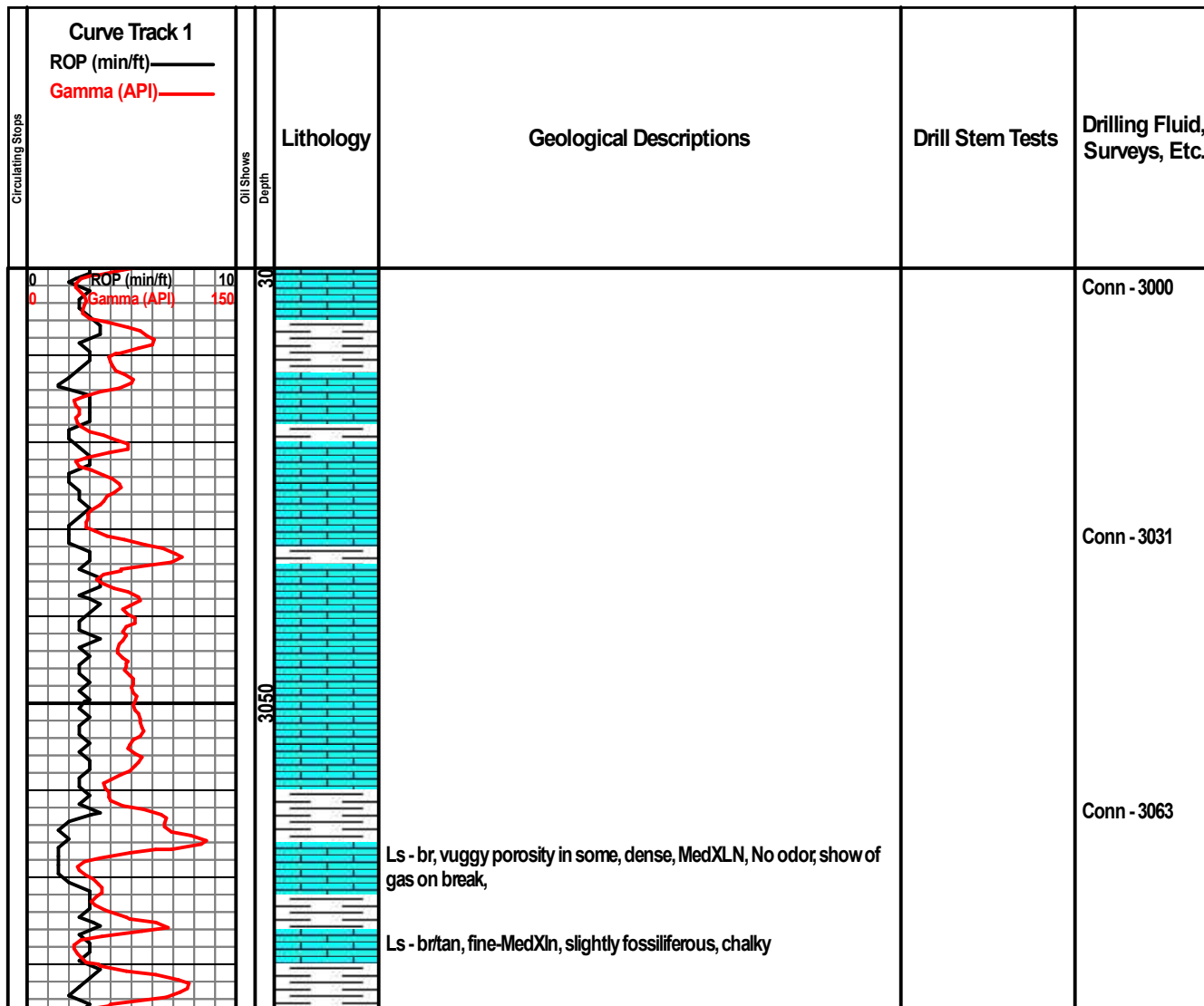
Core  
Dst 2  
Dst

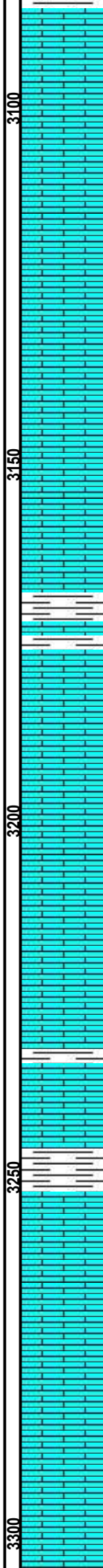
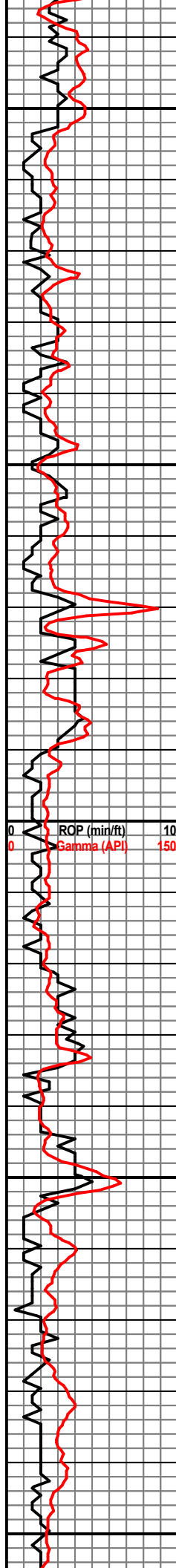
### EVENT

Rft  
Sidewall

### OIL SHOW

Cfs





Ls - grey-br, medXln, foss, dense, no shows

Ls - tan, medxln, foss, dense, fractured in some, also calcitic with slight vuggy porosity

Ls - br, highly weathered, vuggy, some fractured porosity med xln no shows

Ls - gray, oolitic, medxln, highly foss, w/ weathered porosity, faint if any odor, show of gas on break, no oil

Excellent calcite crystals

Ls - tan/cream, medxln, highly foss, weathered & vuggy porosity, oolitic in some, No shows, No Odor

Ls - tan, fine MedXln, vuggy porosity, oolitic - oolitic in most,

Conn - 3095

Conn - 3126

Conn - 3156

Conn - 3188

Conn - 3219

Conn - 3251

Conn - 3283

-Mud Check-  
Wt - 8.6  
Vis - 72  
LCM - 2#



LCM - 2#

Conn - 3315

fossiliferous, No Shows

Ls - tan, foss, medxln, fractured porosity, vuggy, calcitic, No Shows

Conn - 3347

Conn - 3379

Heebner

Shale - Jet black

-Mud Check-  
Wt - 8.6  
Vis - 72  
LCM - 2#

Toronto

ROP (min/ft)  
Gamma (API)

Douglas

-Mud Check-  
Wt - 8.6  
Vis - 70  
LCM - 2#  
Conn - 3411

Sh - Gray, chalky in part

-Mud Check-  
Wt - 8.6  
Vis - 74  
LCM - 2#

Conn - 3442  
Rig Check

Sh - gray, waxy

- Mud Check -  
3455  
Wt - 8.8  
Vis - 68  
WL - 8  
CHL - 4,800  
LCM - 1.5 #  
Conn - 3474


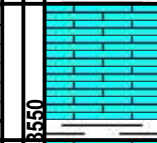
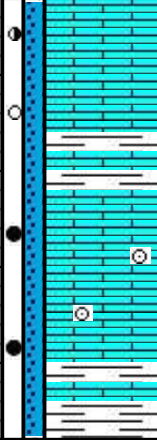
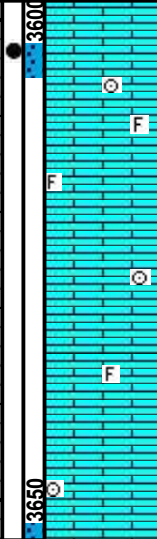
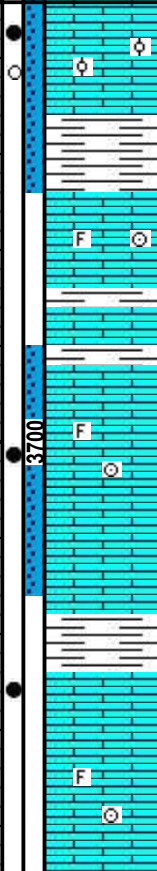
sh - gray

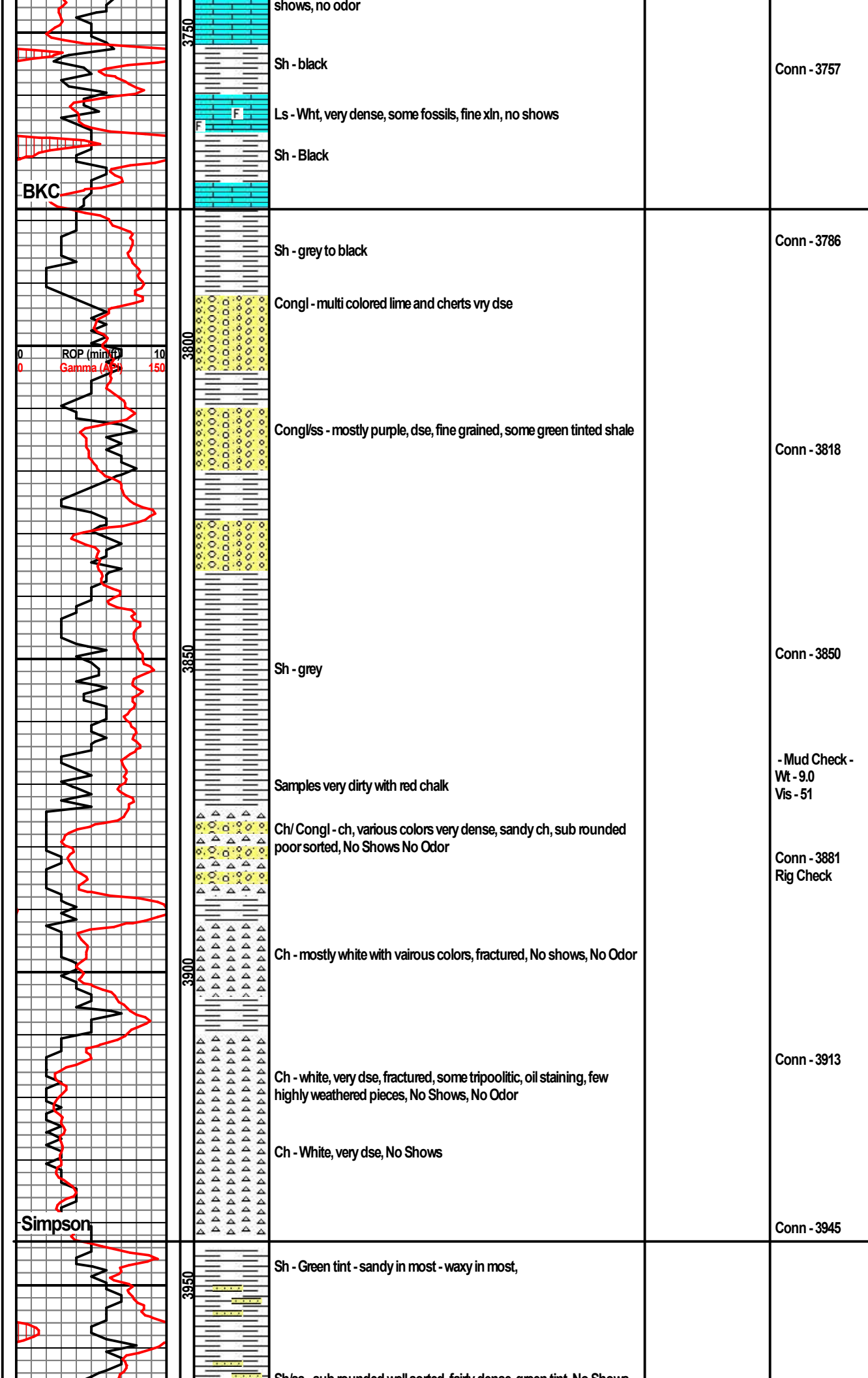
Conn - 3506  
Repair  
Geolograph

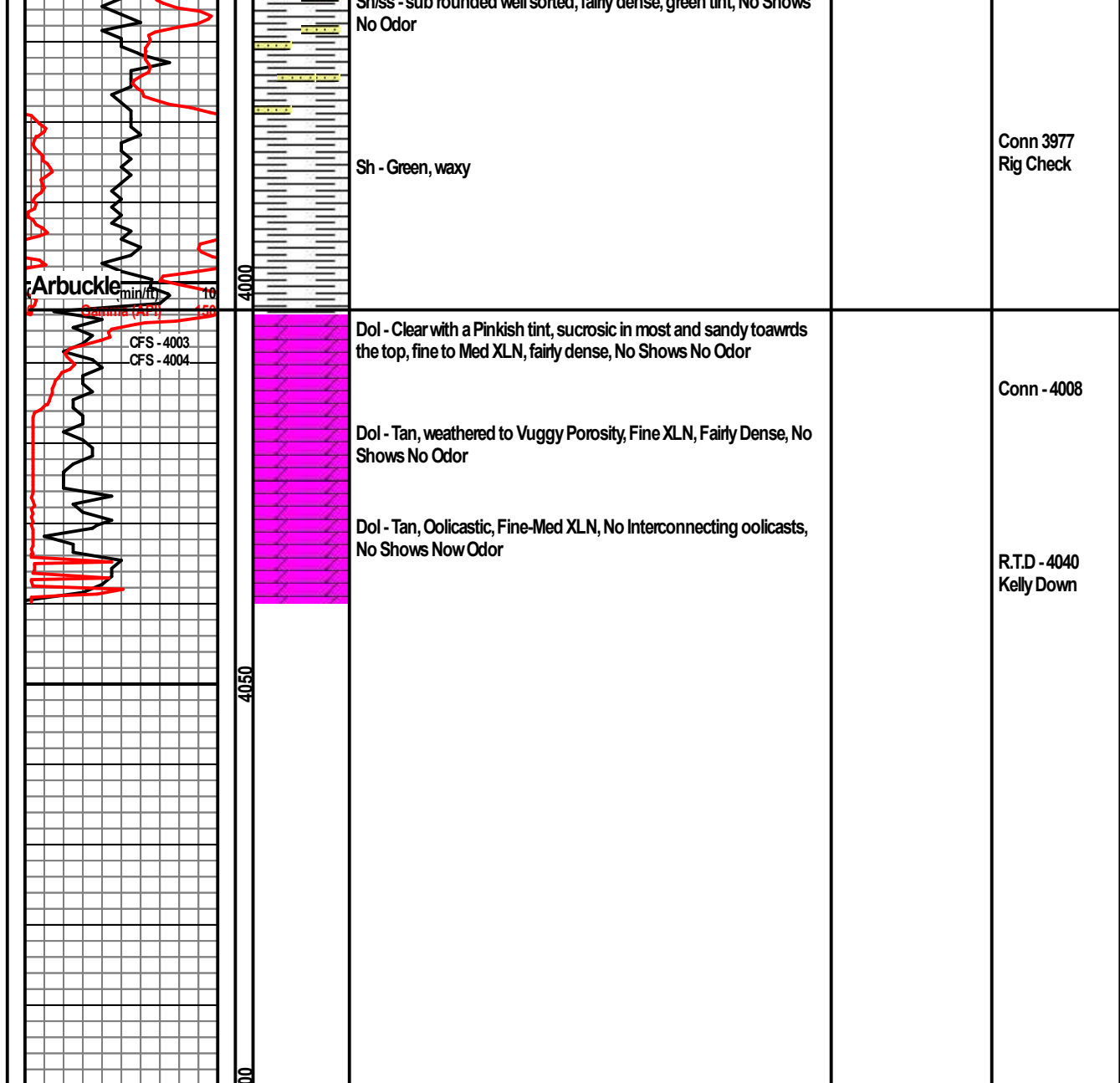
Brown Lime

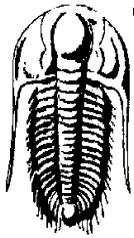
Ls - br, micro/fine Xln, fossiliferous in most, Dense



LKC		Sh - gray, Limy in part		
Lansing "B"				Conn - 3538
Lansing "F"		<p>Ls - tan, f/med Xln, vuggy porosity, fractured and calcitic, sfo&amp;g on break, slight show of gas in few, strong odor</p> <p>Ls - white/cream, Med Xln, dense, well saturdated, sfo&amp;g on break, strong odor, oil show was a heavy oil mostly residue.</p>	<p>DST "1" 3553-3606 recovery - 372' Muddy Water - 80% water 20% Mud FP: 29-115 FP: 123-192 SIP: 906-812</p>	<p>3565 CFS - 30-45-60</p> <p>Conn - 3568</p>
Lansing "H" Por		<p>Ls - whit, highly fossiliferous, med Xln, some oolitic, sfo&amp;g on break, well saturated, strong odor, lighter oil and more active oil than above</p> <p>Ls - cream/white, fine Xln, very dense with some oolitic chert on top. No Shows</p> <p>Ls - tan, fine Xln, fractures and fossils in some.</p>		<p>Conn - 3600</p> <p>- Pipe Strap - 0.73 Long to Board</p> <p>Conn - 3632 Rig Check</p> <p>- Mud Check - 3632 Wt - 8.8 Vis - 59 WL - 9.2 CHL - 7,000 LCM - 1.5#</p>
		<p>Ls - Highly oolitic, with interconnecting porosity, sfo&amp;g, strong odor, free oil floating in tray</p> <p>Sh - black/grey</p> <p>Ls - br, dense, fractured, calcitic, No shows No Odor</p> <p>Ls - tan, highly oolitic w/ interconnecting porosity, well saturated, sfo&amp;g, strong odor</p> <p>Ls - Wht/tan, f/MedXln, Pinpoint Porosity, sfo&amp;g, strong odor</p> <p>Ls - wht/tan, f/MedXln, vuggy Porosity, calcitic fractures, sfo&amp;g, Strong Odor</p> <p>Ls - wht, dense, fine-med xln, fossils, fractured, sfo&amp;g on break, no live free oil, medium odor</p> <p>Ls - wht, very dense, fine xln, some fossils, fractured in most, no</p>	<p>DST - "2" 3649 - 3666 Recovery 40' Muddy Water - 90% water 10% Mud FP - 16-21 FP - 23-32 SIP - 1041-991</p> <p>DST "3" 3690-3715 Recovery 70' - Muddy Water 85% water 15% Mud FP: 17-30 FP: 33-52 SIP: 957-899</p>	<p>Conn - 3664</p> <p>3666 CFS - 30-45-60</p> <p>Conn - 3694</p> <p>3715 CFS - 30-45-60</p> <p>- Mud Check - 3715 Wt - 9.2 Vis - 80 WL - 10.8 CHL - 9,000 LCM - 1#</p> <p>Conn - 3726</p>







**TRILOBITE**  
**TESTING, INC.**

## DRILL STEM TEST REPORT

Jones Oil LLC

**24/23S/14W/Stafford**

112 N Gray  
St. John Kansas  
67576+1923  
ATTN: Keaton Jones

**Dunn #1**

Job Ticket: 63053

**DST#: 1**

Test Start: 2018.02.07 @ 21:26:00

### GENERAL INFORMATION:

Formation: **Lansing zones B-F**

Deviated: No Whipstock: ft (KB)

Time Tool Opened: 23:03:02

Time Test Ended: 02:46:02

Test Type: Conventional Bottom Hole (Initial)

Tester: Ken Swinney

Unit No: 72 Great Bend/ 52

**Interval: 3553.00 ft (KB) To 3606.00 ft (KB) (TVD)**

Reference Elevations: 1943.00 ft (KB)

Total Depth: 3606.00 ft (KB) (TVD)

1936.00 ft (CF)

Hole Diameter: 7.80 inches Hole Condition: Fair

KB to GR/CF: 7.00 ft

**Serial #: 6755 Inside**

Press@RunDepth: 192.65 psig @ 3554.00 ft (KB)

Capacity: psig

Start Date: 2018.02.07 End Date: 2018.02.08

Last Calib.: 2018.02.08

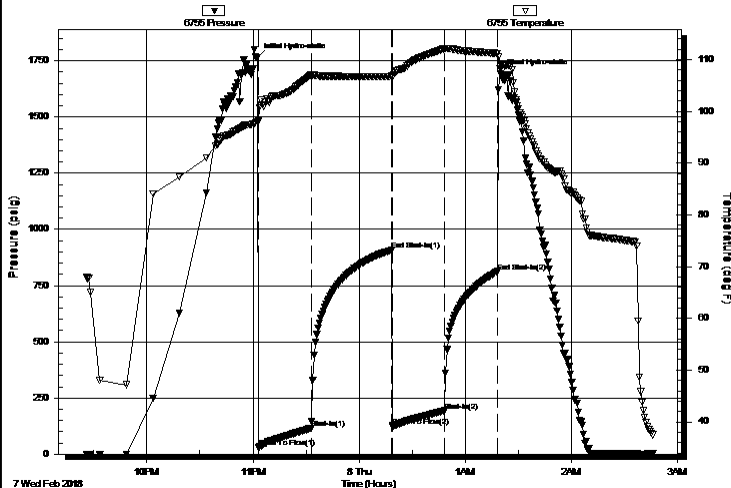
Start Time: 21:26:01 End Time: 02:46:02

Time On Btm: 2018.02.07 @ 23:02:32

Time Off Btm: 2018.02.08 @ 01:19:47

TEST COMMENT: I.F. 30 Minutes/ Blow built to BOB in 8 minutes  
I.S.I. 45 Minutes/ No blow back  
F.F. 30 Minutes/ Blow built to 2 inches then died to 1/2 inch  
F.S.I. 30 Minutes/ No blow back

Pressure vs. Time



PRESSURE SUMMARY

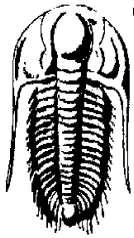
Time (Min.)	Pressure (psig)	Temp (deg F)	Annotation
0	1761.99	98.04	Initial Hydro-static
1	29.38	98.06	Open To Flow (1)
31	115.13	106.97	Shut-In(1)
76	906.79	106.78	End Shut-In(1)
77	123.70	106.81	Open To Flow (2)
106	192.65	112.09	Shut-In(2)
136	812.30	111.20	End Shut-In(2)
138	1691.66	109.12	Final Hydro-static

Recovery

Length (ft)	Description	Volume (bbl)
372.00	Muddy Water w/show of oil	5.22
0.00	Mud 20% Water 80%	0.00

Gas Rates

	Choke (inches)	Pressure (psig)	Gas Rate (Mcf/d)
--	----------------	-----------------	------------------



**TRILOBITE**  
**TESTING, INC.**

## DRILL STEM TEST REPORT

Jones Oil LLC

**24/23S/14W/Stafford**

112 N Gray  
St. John Kansas  
67576+1923  
ATTN: Keaton Jones

**Dunn #1**

Job Ticket: 63053

**DST#: 1**

Test Start: 2018.02.07 @ 21:26:00

### GENERAL INFORMATION:

Formation: **Lansing zones B-F**

Deviated: No Whipstock: ft (KB)

Time Tool Opened: 23:03:02

Time Test Ended: 02:46:02

Test Type: Conventional Bottom Hole (Initial)

Tester: Ken Swinney

Unit No: 72 Great Bend/ 52

Interval: **3553.00 ft (KB) To 3606.00 ft (KB) (TVD)**

Reference Elevations: 1943.00 ft (KB)

Total Depth: 3606.00 ft (KB) (TVD)

1936.00 ft (CF)

Hole Diameter: 7.80 inches Hole Condition: Fair

KB to GR/CF: 7.00 ft

**Serial #: 6752 Outside**

Press@RunDepth: 812.94 psig @ 3555.00 ft (KB)

Capacity: psig

Start Date: 2018.02.07

End Date:

2018.02.08

Last Calib.:

2018.02.08

Start Time: 21:26:01

End Time:

02:46:02

Time On Btm:

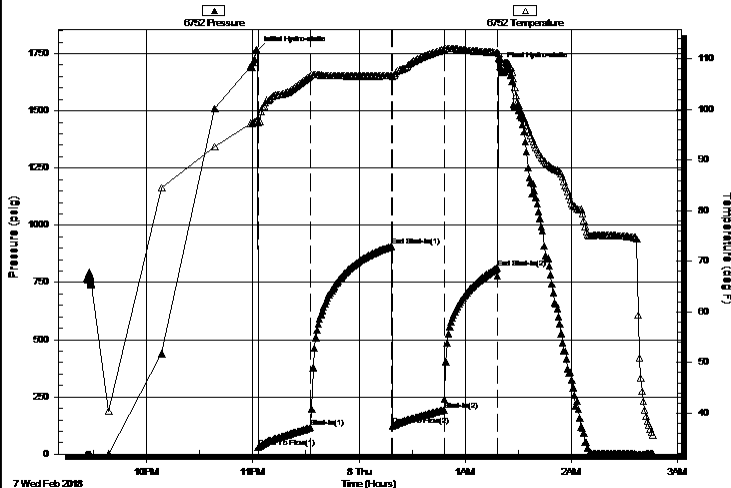
2018.02.07 @ 23:02:32

Time Off Btm:

2018.02.08 @ 01:19:47

TEST COMMENT: I.F. 30 Minutes/ Blow built to BOB in 8 minutes  
I.S.I. 45 Minutes/ No blow back  
F.F. 30 Minutes/ Blow built to 2 inches then died to 1/2 inch  
F.S.I. 30 Minutes/ No blow back

Pressure vs. Time



PRESSURE SUMMARY

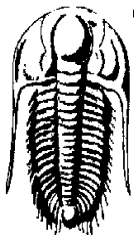
Time (Min.)	Pressure (psig)	Temp (deg F)	Annotation
0	1762.33	97.75	Initial Hydro-static
1	30.10	97.51	Open To Flow (1)
31	115.97	106.76	Shut-In(1)
76	908.07	106.66	End Shut-In(1)
77	124.24	106.48	Open To Flow (2)
106	193.29	111.92	Shut-In(2)
136	812.94	111.27	End Shut-In(2)
138	1693.46	109.99	Final Hydro-static

Recovery

Length (ft)	Description	Volume (bbl)
372.00	Muddy Water w/show of oil	5.22
0.00	Mud 20% Water 80%	0.00

Gas Rates

	Choke (inches)	Pressure (psig)	Gas Rate (Mcf/d)
--	----------------	-----------------	------------------



**TRILOBITE**  
**TESTING, INC.**

## DRILL STEM TEST REPORT

### FLUID SUMMARY

Jones Oil LLC

**24/23S/14W/Stafford**

112 N Gray  
St. John Kansas  
67576+1923  
ATTN: Keaton Jones

**Dunn #1**

Job Ticket: 63053

**DST#: 1**

Test Start: 2018.02.07 @ 21:26:00

### Mud and Cushion Information

Mud Type: Gel Chem

Mud Weight: 9.00 lb/gal

Viscosity: 68.00 sec/qt

Water Loss: 7.98 in<sup>3</sup>

Resistivity: ohm.m

Salinity: 4800.00 ppm

Filter Cake: 1.00 inches

Cushion Type:

Cushion Length:

Cushion Volume:

Gas Cushion Type:

Gas Cushion Pressure:

Oil API:

deg API

Water Salinity: 23000 ppm

ft

bbl

psig

### Recovery Information

Recovery Table

Length ft	Description	Volume bbl
372.00	Muddy Water w/show of oil	5.218
0.00	Mud 20% Water 80%	0.000

Total Length: 372.00 ft      Total Volume: 5.218 bbl

Num Fluid Samples: 0

Num Gas Bombs: 0

Serial #:

Laboratory Name:

Laboratory Location:

Recovery Comments: Recovery Resistivity .581 ohms @ 34 deg.

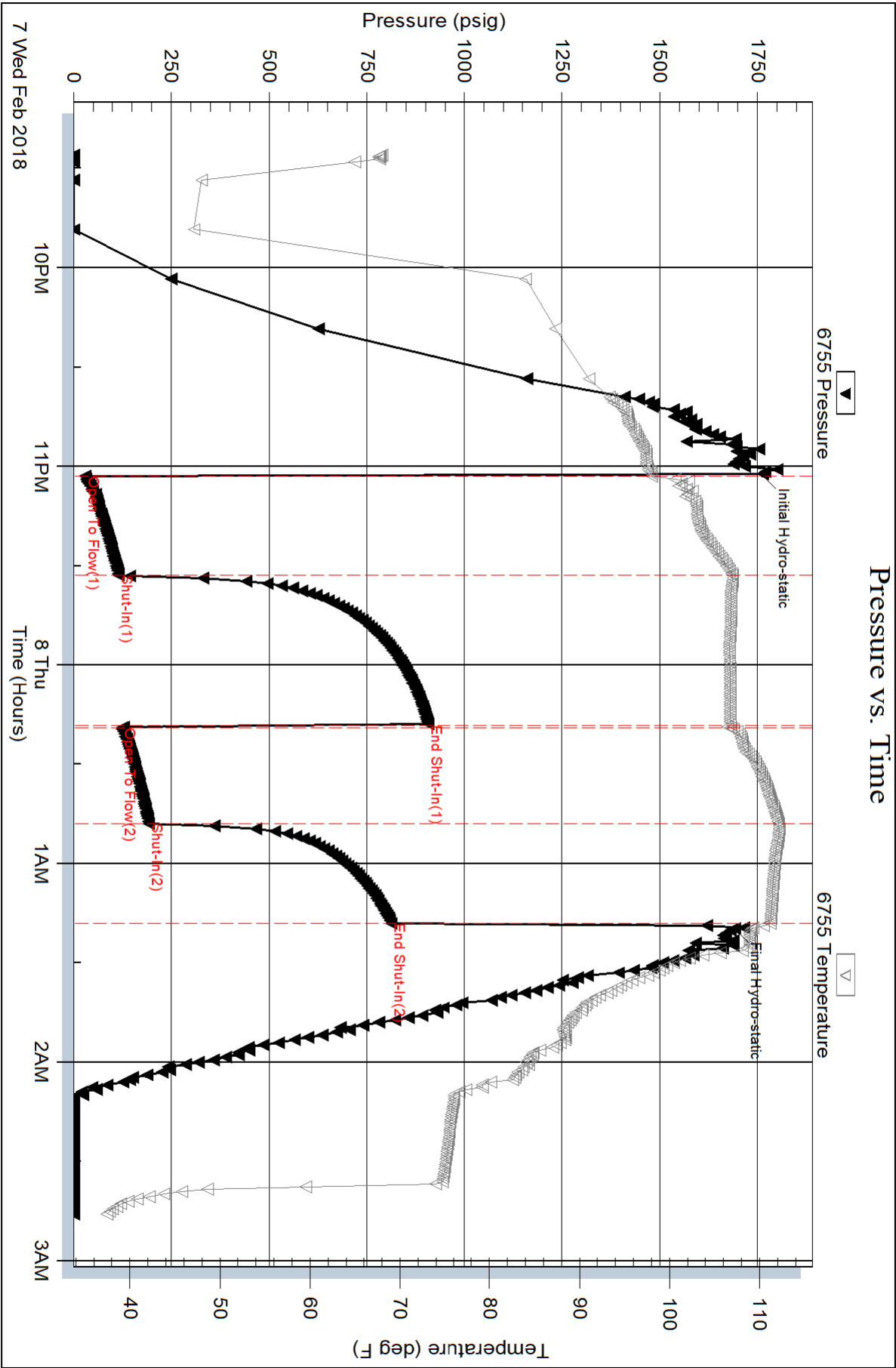
Serial #: 6755

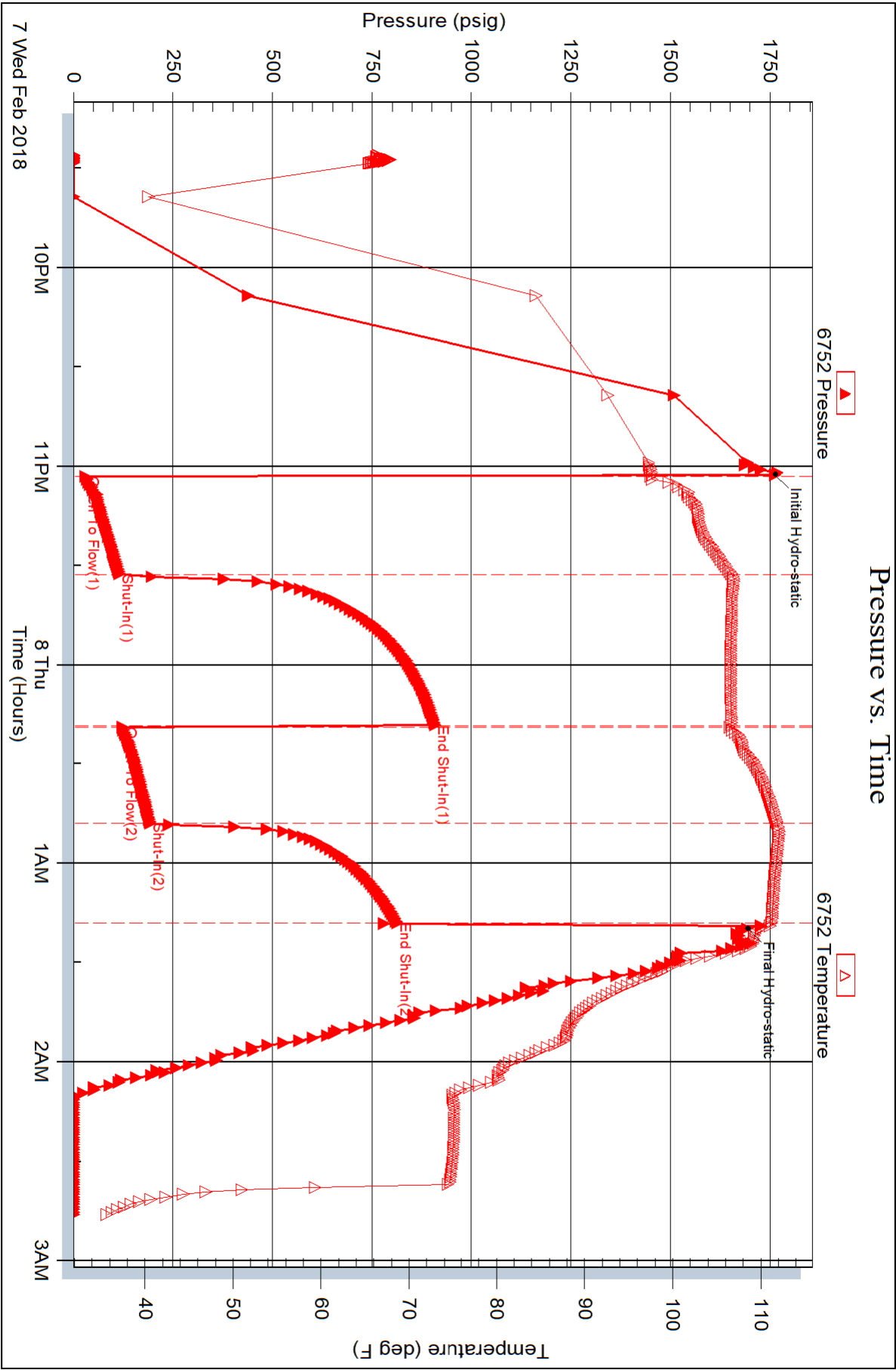
Inside

Jones Oil LLC

Dunn #1

DST Test Number: 1









**TRILOBITE**  
**TESTING, INC.**

## DRILL STEM TEST REPORT

Jones Oil LLC

**24/23S/14W/Stafford**

112 N Gray  
St. John Kansas  
67576+1923  
ATTN: Keaton Jones

**Dunn #1**

Job Ticket: 63054

**DST#: 2**

Test Start: 2018.02.08 @ 12:12:00

### GENERAL INFORMATION:

Formation: **Lansing zone H**

Deviated: No Whipstock: ft (KB)

Time Tool Opened: 13:32:47

Time Test Ended: 17:50:02

Test Type: Conventional Bottom Hole (Initial)

Tester: Ken Swinney

Unit No: 72 Great Bend/ 52

Interval: **3649.00 ft (KB) To 3666.00 ft (KB) (TVD)**

Reference Elevations: 1943.00 ft (KB)

Total Depth: 3666.00 ft (KB) (TVD)

1936.00 ft (CF)

Hole Diameter: 7.80 inches Hole Condition: Fair

KB to GR/CF: 7.00 ft

**Serial #: 6755** Inside

Press@RunDepth: 32.89 psig @ 3650.00 ft (KB)

Capacity: psig

Start Date: 2018.02.08

End Date:

2018.02.08

Last Calib.: 2018.02.08

Start Time: 12:12:01

End Time:

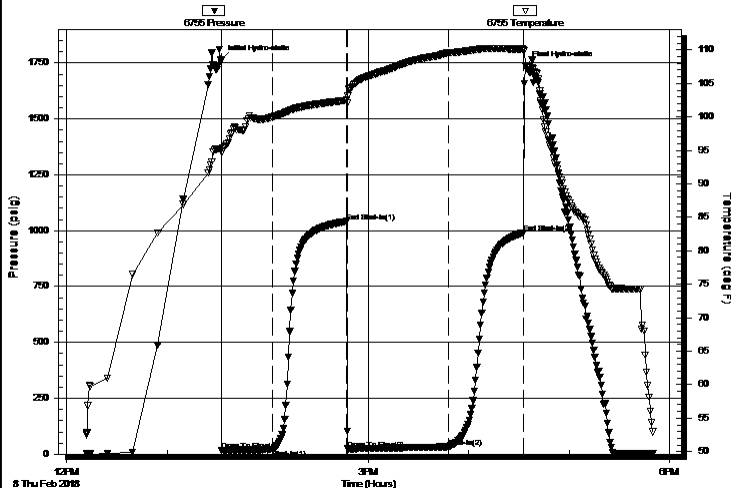
17:50:02

Time On Btm: 2018.02.08 @ 13:32:17

Time Off Btm: 2018.02.08 @ 16:34:17

TEST COMMENT: I.F. 30 Minutes/ Blow built to 3 inches  
I.S.I. 45 Minutes/ No blow back  
F.F. 60 Minutes/ Blow built to 3 inches  
F.S.I. 45 Minutes/ No blow back

Pressure vs. Time



PRESSURE SUMMARY

Time (Min.)	Pressure (psig)	Temp (deg F)	Annotation
0	1763.42	95.29	Initial Hydro-static
1	16.39	94.70	Open To Flow (1)
31	21.17	99.99	Shut-In(1)
75	1041.30	102.51	End Shut-In(1)
76	23.72	103.10	Open To Flow (2)
136	32.89	109.56	Shut-In(2)
181	991.51	110.08	End Shut-In(2)
182	1739.14	107.65	Final Hydro-static

Recovery

Length (ft)	Description	Volume (bbl)
40.00	Muddy Water/ Mud 10% Water 90%	0.56

Gas Rates

	Choke (inches)	Pressure (psig)	Gas Rate (Mcf/d)
--	----------------	-----------------	------------------



**TRILOBITE**  
**TESTING, INC.**

## DRILL STEM TEST REPORT

Jones Oil LLC

**24/23S/14W/Stafford**

112 N Gray  
St. John Kansas  
67576+1923  
ATTN: Keaton Jones

**Dunn #1**

Job Ticket: 63054

**DST#: 2**

Test Start: 2018.02.08 @ 12:12:00

### GENERAL INFORMATION:

Formation: **Lansing zone H**

Deviated: No Whipstock: ft (KB)

Time Tool Opened: 13:32:47

Time Test Ended: 17:50:02

Test Type: Conventional Bottom Hole (Initial)

Tester: Ken Swinney

Unit No: 72 Great Bend/ 52

Interval: **3649.00 ft (KB) To 3666.00 ft (KB) (TVD)**

Reference Elevations: 1943.00 ft (KB)

Total Depth: 3666.00 ft (KB) (TVD)

1936.00 ft (CF)

Hole Diameter: 7.80 inches Hole Condition: Fair

KB to GR/CF: 7.00 ft

**Serial #: 6752 Outside**

Press@RunDepth: 992.41 psig @ 3651.00 ft (KB)

Capacity: psig

Start Date: 2018.02.08

End Date:

2018.02.08

Last Calib.:

2018.02.08

Start Time: 12:12:01

End Time:

17:50:02

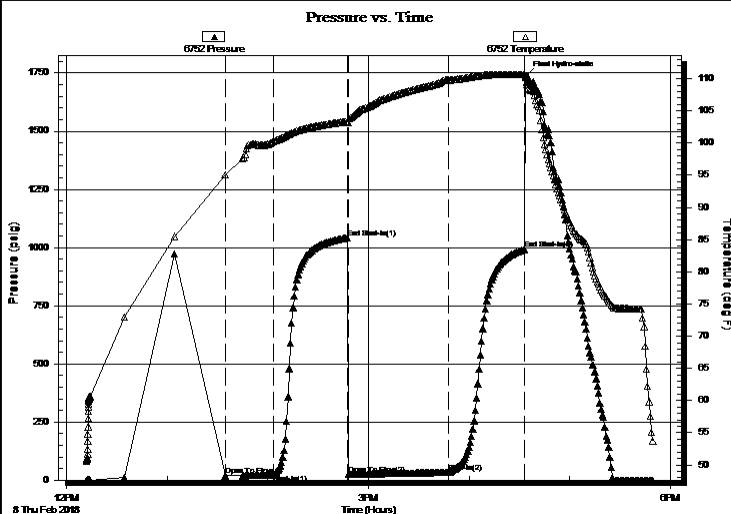
Time On Btm:

Time Off Btm: 2018.02.08 @ 16:34:17

TEST COMMENT: I.F. 30 Minutes/ Blow built to 3 inches  
I.S.I. 45 Minutes/ No blow back  
F.F. 60 Minutes/ Blow built to 3 inches  
F.S.I. 45 Minutes/ No blow back

### PRESSURE SUMMARY

Time (Min.)	Pressure (psig)	Temp (deg F)	Annotation
0	18.57	95.08	Open To Flow (1)
29	23.76	100.24	Shut-In(1)
73	1042.23	103.36	End Shut-In(1)
74	24.67	103.17	Open To Flow (2)
134	33.93	109.78	Shut-In(2)
179	992.41	110.64	End Shut-In(2)
180	1740.31	109.41	Final Hydro-static

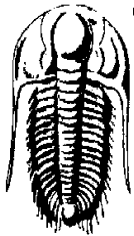


### Recovery

Length (ft)	Description	Volume (bbl)
40.00	Muddy Water/ Mud 10% Water 90%	0.56

### Gas Rates

	Choke (inches)	Pressure (psig)	Gas Rate (Mcf/d)
--	----------------	-----------------	------------------



**TRILOBITE**  
**TESTING, INC.**

## DRILL STEM TEST REPORT

### FLUID SUMMARY

Jones Oil LLC

**24/23S/14W/Stafford**

112 N Gray  
St. John Kansas  
67576+1923  
ATTN: Keaton Jones

**Dunn #1**

Job Ticket: 63054

**DST#: 2**

Test Start: 2018.02.08 @ 12:12:00

### Mud and Cushion Information

Mud Type: Gel Chem

Mud Weight: 9.00 lb/gal

Viscosity: 59.00 sec/qt

Water Loss: 9.18 in<sup>3</sup>

Resistivity: ohm.m

Salinity: 7000.00 ppm

Filter Cake: 1.00 inches

Cushion Type:

Cushion Length:

Cushion Volume:

Gas Cushion Type:

Gas Cushion Pressure:

Oil API:

ft

bbl

psig

deg API

Water Salinity: 15000 ppm

### Recovery Information

Recovery Table

Length ft	Description	Volume bbl
40.00	Muddy Water/ Mud 10% Water 90%	0.561

Total Length: 40.00 ft      Total Volume: 0.561 bbl

Num Fluid Samples: 0

Num Gas Bombs: 0

Serial #:

Laboratory Name:

Laboratory Location:

Recovery Comments: Recovery Resistivity .485 ohms @ 60 deg

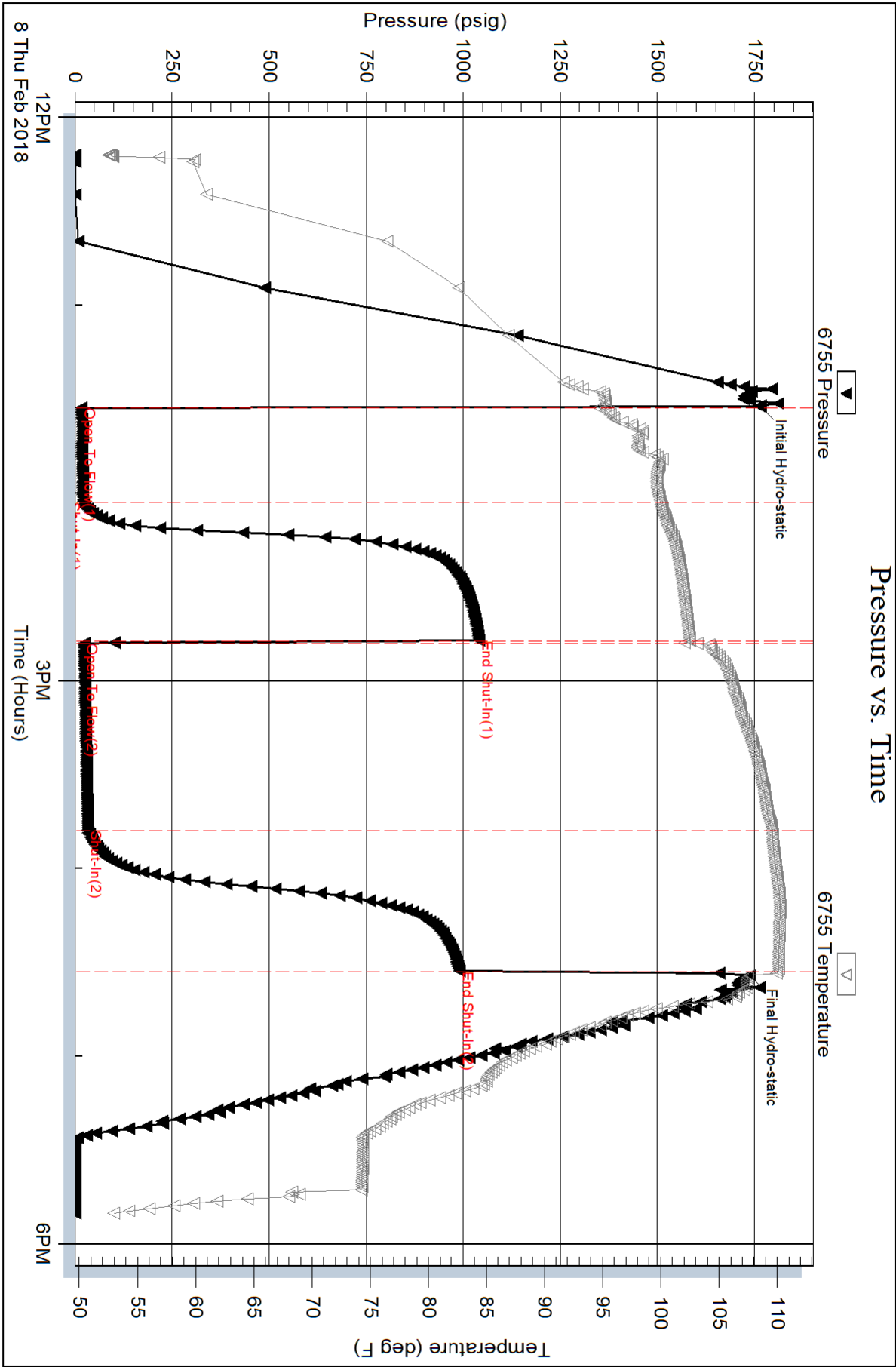
Serial #: 6755

Inside

Jones Oil LLC

Dunn #1

DST Test Number: 2

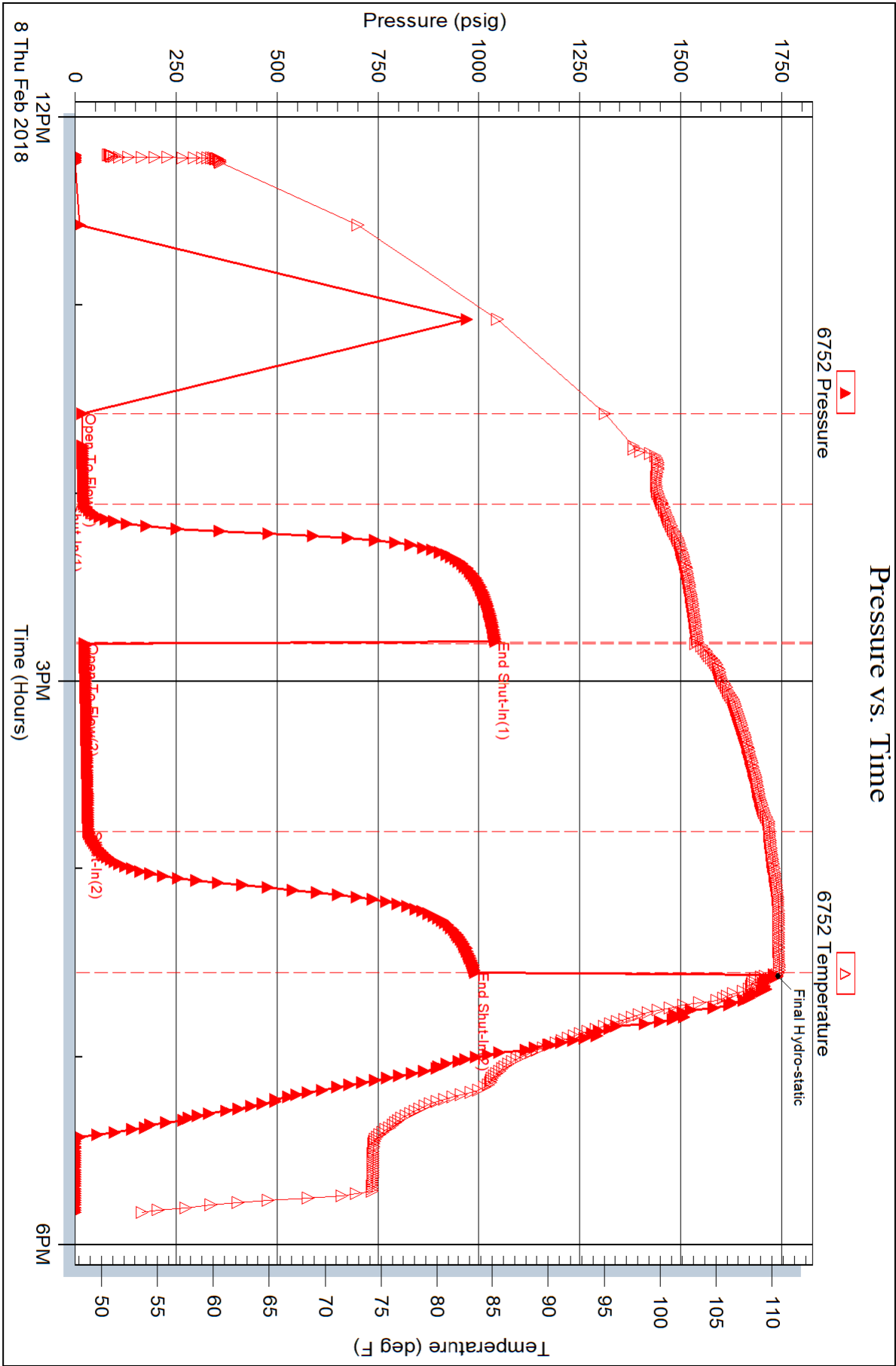


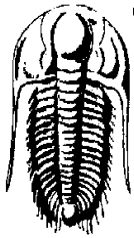
Serial #: 6752

Outside Jones Oil LLC

Dunn #1

DST Test Number: 2





**TRILOBITE**  
**TESTING, INC.**

## DRILL STEM TEST REPORT

Jones Oil LLC

24/23S/14W/Stafford

112 N Gray  
St. John Kansas  
67576+1923  
ATTN: Keaton Jones

Dunn #1

Job Ticket: 63055

DST#: 3

Test Start: 2018.02.09 @ 02:30:00

### GENERAL INFORMATION:

Formation: **Lansing zone J**

Deviated: No Whipstock: ft (KB)

Time Tool Opened: 04:05:17

Time Test Ended: 08:24:02

Test Type: Conventional Bottom Hole (Initial)

Tester: Ken Swinney

Unit No: 72 Great Bend/52

Interval: **3690.00 ft (KB) To 3715.00 ft (KB) (TVD)**

Reference Elevations: 1943.00 ft (KB)

Total Depth: 3715.00 ft (KB) (TVD)

1936.00 ft (CF)

Hole Diameter: 7.80 inches Hole Condition: Fair

KB to GR/CF: 7.00 ft

Serial #: **6755** Inside

Press@RunDepth: 52.52 psig @ 3711.00 ft (KB)

Capacity: psig

Start Date: 2018.02.09

End Date:

2018.02.09

Last Calib.: 2018.02.09

Start Time: 02:30:01

End Time:

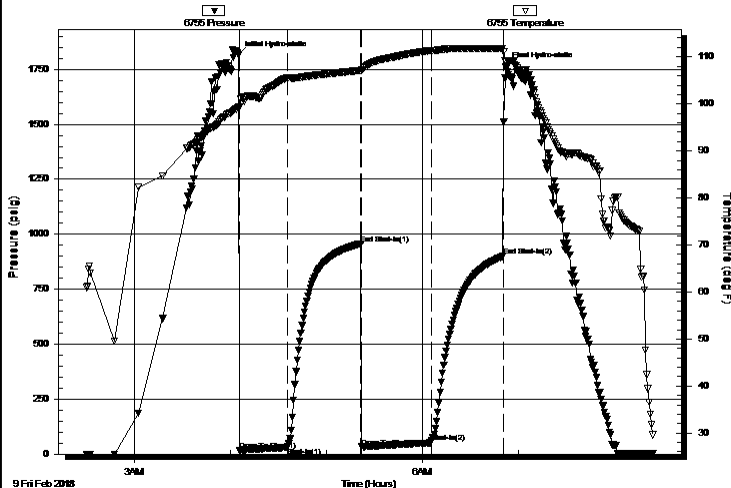
08:24:02

Time On Btm: 2018.02.09 @ 04:04:47

Time Off Btm: 2018.02.09 @ 06:51:47

TEST COMMENT: I.F. 30 Mintues/ Blow built to 3 1/2 inches  
I.S.I. 45 Minutes/ No blow back  
F.F. 45 Minutes/ Blow built to 2 1/2 inches  
F.S.I. 45 Minutes/ No blow back

Pressure vs. Time



PRESSURE SUMMARY

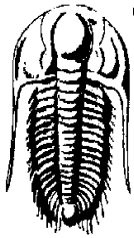
Time (Min.)	Pressure (psig)	Temp (deg F)	Annotation
0	1814.42	99.34	Initial Hydro-static
1	17.75	99.22	Open To Flow (1)
31	30.62	105.59	Shut-In(1)
77	957.04	107.15	End Shut-In(1)
77	33.10	107.20	Open To Flow (2)
121	52.52	111.38	Shut-In(2)
166	899.55	111.78	End Shut-In(2)
167	1763.43	109.19	Final Hydro-static

Recovery

Length (ft)	Description	Volume (bbl)
70.00	Muddy Water/ Mud 15% Water 85%	0.98

Gas Rates

	Choke (inches)	Pressure (psig)	Gas Rate (Mcf/d)
--	----------------	-----------------	------------------



**TRILOBITE**  
**TESTING, INC.**

## DRILL STEM TEST REPORT

Jones Oil LLC

112 N Gray  
St. John Kansas  
67576+1923  
ATTN: Keaton Jones

**24/23S/14W/Stafford**

**Dunn #1**

Job Ticket: 63055

**DST#: 3**

Test Start: 2018.02.09 @ 02:30:00

### GENERAL INFORMATION:

Formation: **Lansing zone J**

Deviated: No Whipstock: ft (KB)

Time Tool Opened: 04:05:17

Time Test Ended: 08:24:02

Test Type: Conventional Bottom Hole (Initial)

Tester: Ken Swinney

Unit No: 72 Great Bend/52

Interval: **3690.00 ft (KB) To 3715.00 ft (KB) (TVD)**

Reference Elevations: 1943.00 ft (KB)

Total Depth: 3715.00 ft (KB) (TVD)

1936.00 ft (CF)

Hole Diameter: 7.80 inches Hole Condition: Fair

KB to GR/CF: 7.00 ft

**Serial #: 6752 Outside**

Press@RunDepth: 900.30 psig @ 3712.00 ft (KB)

Capacity: psig

Start Date: 2018.02.09

End Date:

2018.02.09

Last Calib.:

2018.02.09

Start Time: 02:30:01

End Time:

08:24:02

Time On Btm:

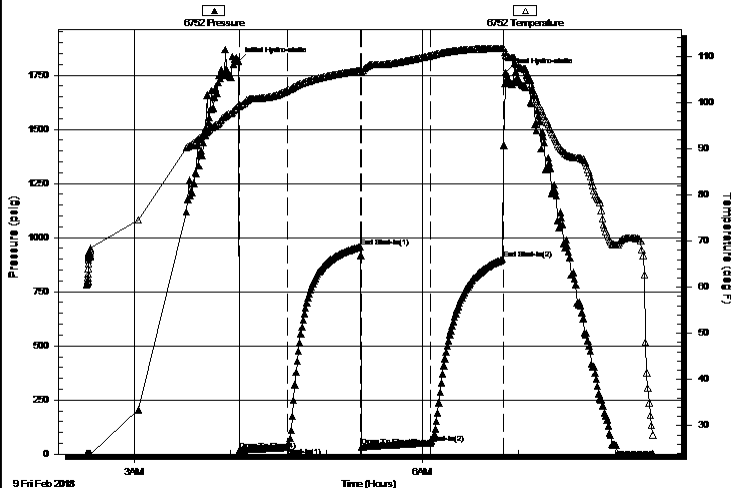
2018.02.09 @ 04:04:47

Time Off Btm:

2018.02.09 @ 06:51:47

TEST COMMENT: I.F. 30 Mintues/ Blow built to 3 1/2 inches  
I.S.I. 45 Minutes/ No blow back  
F.F. 45 Minutes/ Blow built to 2 1/2 inches  
F.S.I. 45 Minutes/ No blow back

Pressure vs. Time



PRESSURE SUMMARY

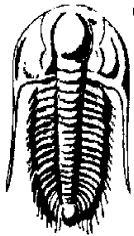
Time (Min.)	Pressure (psig)	Temp (deg F)	Annotation
0	1814.58	99.31	Initial Hydro-static
1	18.48	99.01	Open To Flow (1)
31	31.23	102.52	Shut-In(1)
77	957.45	106.82	End Shut-In(1)
77	34.03	106.57	Open To Flow (2)
120	51.96	110.11	Shut-In(2)
166	900.30	111.64	End Shut-In(2)
167	1761.32	110.27	Final Hydro-static

Recovery

Length (ft)	Description	Volume (bbl)
70.00	Muddy Water/ Mud 15% Water 85%	0.98

Gas Rates

	Choke (inches)	Pressure (psig)	Gas Rate (Mcf/d)
--	----------------	-----------------	------------------



**TRILOBITE**  
**TESTING, INC.**

## DRILL STEM TEST REPORT

### FLUID SUMMARY

Jones Oil LLC

**24/23S/14W/Stafford**

112 N Gray  
St. John Kansas  
67576+1923  
ATTN: Keaton Jones

**Dunn #1**

Job Ticket: 63055

**DST#: 3**

Test Start: 2018.02.09 @ 02:30:00

### Mud and Cushion Information

Mud Type: Gel Chem

Mud Weight: 9.00 lb/gal

Viscosity: 59.00 sec/qt

Water Loss: 9.18 in<sup>3</sup>

Resistivity: ohm.m

Salinity: 7000.00 ppm

Filter Cake: 1.00 inches

Cushion Type:

Cushion Length:

Cushion Volume:

Gas Cushion Type:

Gas Cushion Pressure:

Oil API:

Water Salinity:

ft

bbl

psig

deg API

31000 ppm

### Recovery Information

Recovery Table

Length ft	Description	Volume bbl
70.00	Muddy Water/ Mud 15% Water 85%	0.982

Total Length: 70.00 ft      Total Volume: 0.982 bbl

Num Fluid Samples: 0

Num Gas Bombs: 0

Serial #:

Laboratory Name:

Laboratory Location:

Recovery Comments: Recovery Resistivity .480 ohms @ 30 deg.



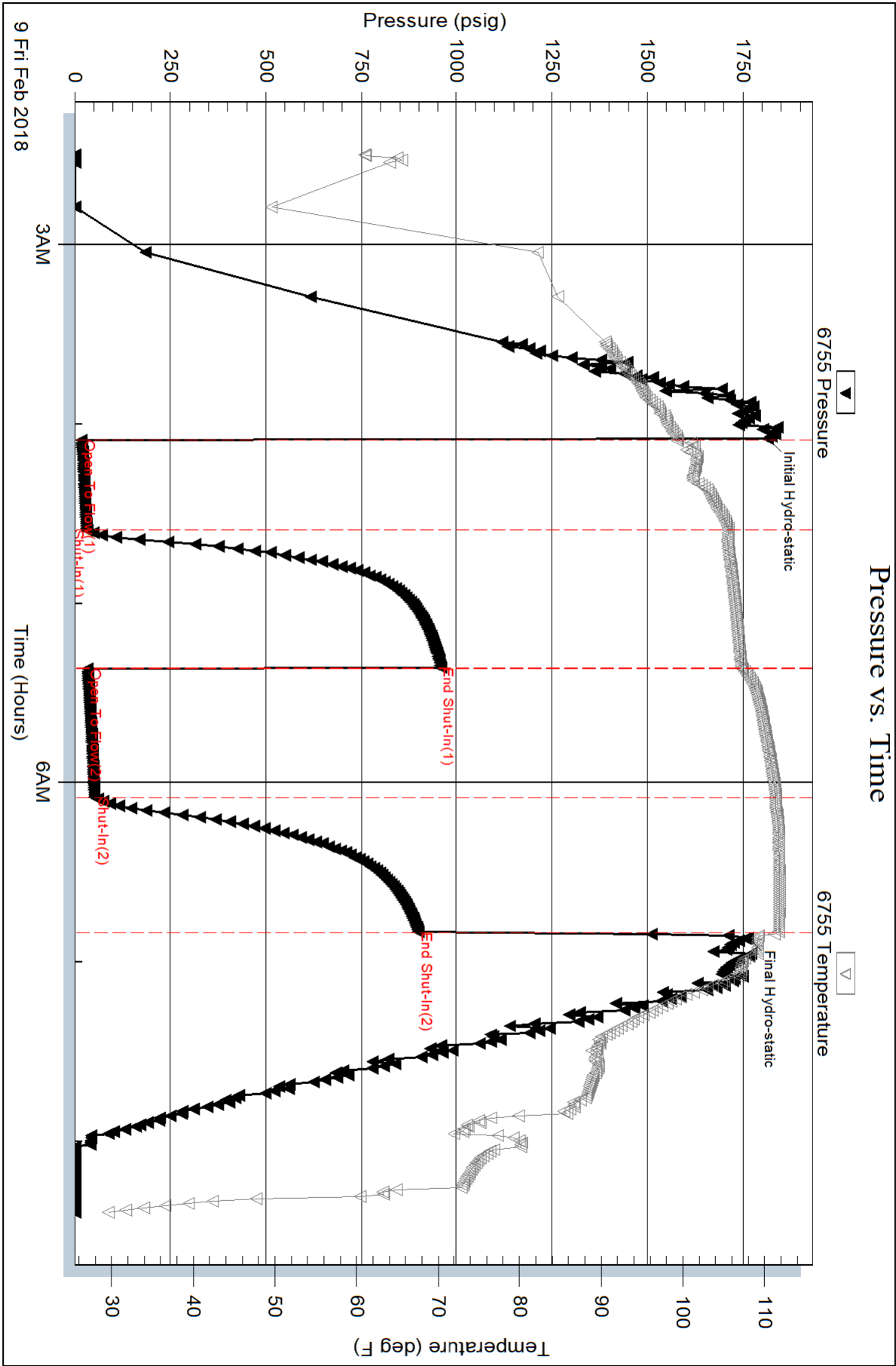
Serial #: 6755

Inside

Jones Oil LLC

Dunn #1

DST Test Number: 3

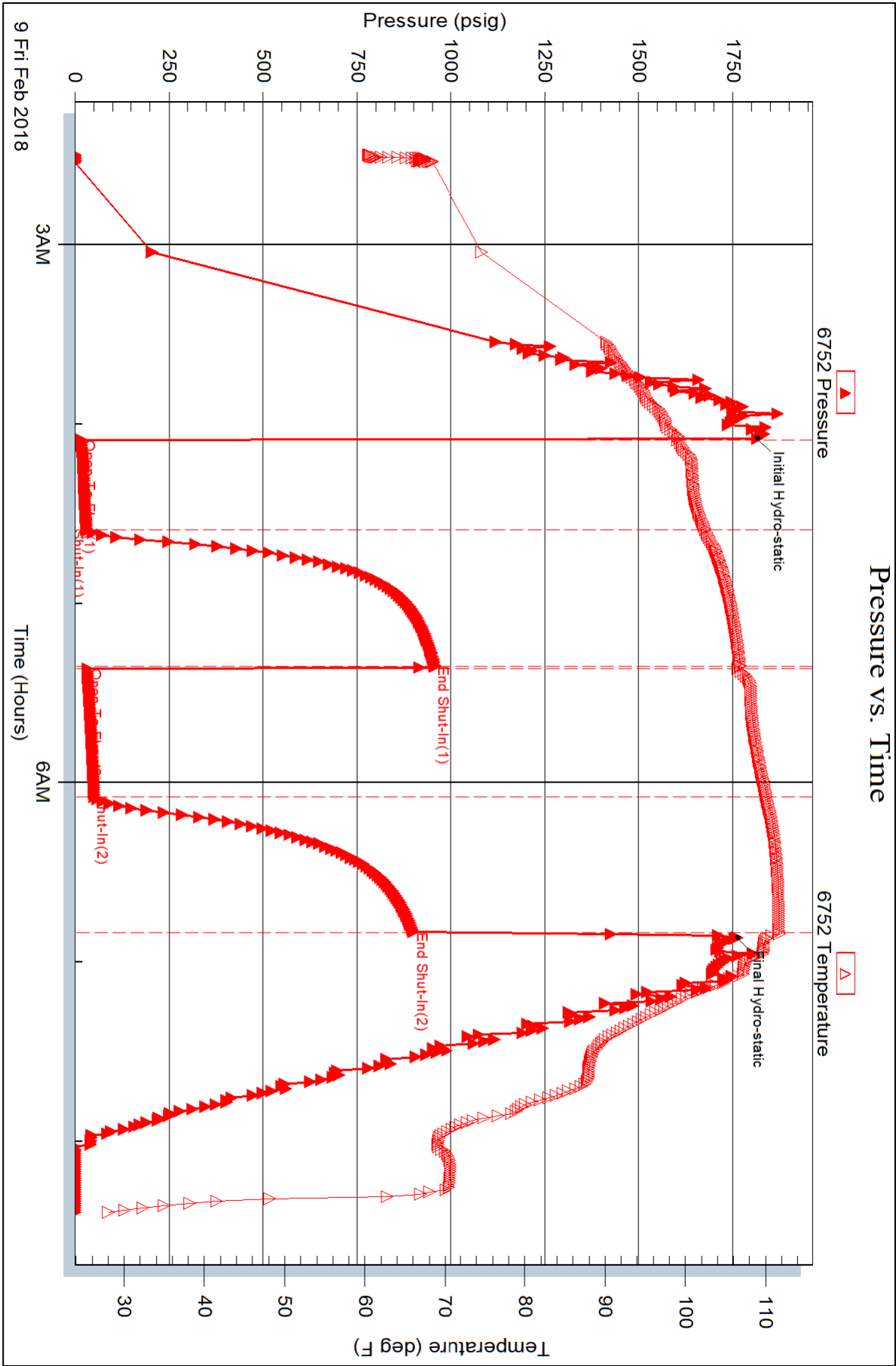


Serial #: 6752

Outside Jones Oil LLC

Dunn #1

DST Test Number: 3





PAGE	CUST NO	YARD #	INVOICE DATE
1 of 1	1005777	1718	02/20/2018
INVOICE NUMBER			
92640024			

Pratt (620) 672-1201  
B STEVE JONES  
I 112 N GRAY  
L SAINT JOHN  
L KS US 67576  
T  
O ATTN:

J LEASE NAME Dunn 1  
O LOCATION  
B COUNTY Stafford  
S STATE KS  
I JOB DESCRIPTION Cement-New Well Casing/Pi  
T JOB CONTACT  
E

JOB #	EQUIPMENT #	PURCHASE ORDER NO.		TERMS	DUE DATE
41088965	19843			Net - 30 days	03/22/2018
		QTY	U of M	UNIT PRICE	INVOICE AMOUNT
<b>For Service Dates: 02/11/2018 to 02/11/2018</b>					
0041088965					
171816332A Cement-New Well Casing/Pi 02/11/2018 Cement PTA					
60/40 POZ		220.00	EA	6.60	1,452.00 T
Cement Gel		380.00	EA	0.14	52.25 T
"Wooden Cmt Plug, 8 5/8""		1.00	EA	88.00	88.00
"Unit Mileage Chg (PU, cars one way)"		30.00	MI	2.48	74.25
Heavy Equipment Mileage		60.00	MI	4.13	247.50
Proppant & Bulk Del. Chgs., per ton mil		285.00	EA	1.37	391.87
Blending & Mixing Service Charge		220.00	BAG	0.77	169.40
Depth Charge; 4001'-5000'		1.00	EA	1,386.00	1,386.00
"Service Supervisor, first 8 hrs on loc.		1.00	EA	96.26	96.26
<b>PLEASE REMIT TO:</b> BASIC ENERGY SERVICES, LP PO BOX 841903 DALLAS, TX 75284-1903					
<b>SEND OTHER CORRESPONDENCE TO:</b> BASIC ENERGY SERVICES, LP 801 CHERRY ST, STE 2100 FORT WORTH, TX 76102					
				<b>SUB TOTAL</b>	3,957.53
				<b>TAX</b>	112.82
				<b>INVOICE TOTAL</b>	4,070.35





**10244 NE Hwy. 61  
P.O. Box 8613  
Pratt, Kansas 67124  
Phone 620-672-1201**

## FIELD SERVICE TICKET

1718 16332 A

DATE      TICKET NO. \_\_\_\_\_

DATE OF JOB 2-11-18 DISTRICT PIATT				NEW WELL <input checked="" type="checkbox"/> OLD WELL <input type="checkbox"/> PROD <input type="checkbox"/> INJ <input type="checkbox"/> WDW <input type="checkbox"/> CUSTOMER ORDER NO.:			
CUSTOMER Steve Jones				LEASE Dunn WELL NO. 1			
ADDRESS				COUNTY STAFFORD STATE MS			
CITY STATE				SERVICE CREW MATTAL McGraw Trevino			
AUTHORIZED BY				JOB TYPE: 2-42 Plug to Abandon			
EQUIPMENT#	HRS	EQUIPMENT#	HRS	EQUIPMENT#	HRS	TRUCK CALLED	DATE 2-10-18 AM PM TIME 7:30
19843	4					ARRIVED AT JOB	AM PM 10:00
19918	5					START OPERATION	AM PM 11:13
						FINISH OPERATION	AM PM 3:15
						RELEASED	AM PM 4:15
						MILES FROM STATION TO WELL	30

**CONTRACT CONDITIONS:** (This contract must be signed before the job is commenced or merchandise is delivered).

The undersigned is authorized to execute this contract as an agent of the customer. As such, the undersigned agrees and acknowledges that this contract for services, materials, products, and/or supplies includes all of and only those terms and conditions appearing on the front and back of this document. No additional or substitute terms and/or conditions shall become a part of this contract without the written consent of an officer of Basic Energy Services LP.

SIGNED:

(WELL OWNER, OPERATOR, CONTRACTOR OR AGENT)

[illegible]

SUB TOTAL	7195	50
-----------	------	----

CHEMICAL / ACID DATA:			

SERVICE & EQUIPMENT	%TAX ON \$		
MATERIALS	%TAX ON \$		
TOTAL		3957	53

TOTAL	3957	52
-------	------	----

JWW

SERVICE REPRESENTATIVE <i>Mike Mattal</i>	THE ABOVE MATERIAL AND SERVICE ORDERED BY CUSTOMER AND RECEIVED BY: <i>X Louis Bury</i> (WELL OWNER OPERATOR CONTRACTOR OR AGENT)
---	--

FIELD SERVICE ORDER NO.





10244 NE Hwy. 61  
P.O. Box 8613  
Pratt, Kansas 67124  
Phone 620-672-1201

FIELD SERVICE TICKET  
1718 16332 A

DATE \_\_\_\_\_ TICKET NO. \_\_\_\_\_

DATE OF JOB 2-11-18		DISTRICT		NEW WELL <input type="checkbox"/> OLD WELL <input type="checkbox"/> PROD <input type="checkbox"/> INJ <input type="checkbox"/> WDW <input type="checkbox"/> CUSTOMER ORDER NO.:						
CUSTOMER Steve Jones		LEASE		WELL NO.						
ADDRESS		COUNTY		STATE						
CITY		STATE		SERVICE CREW						
AUTHORIZED BY		JOB TYPE:								
EQUIPMENT#	HRS	EQUIPMENT#	HRS	EQUIPMENT#	HRS	TRUCK CALLED	DATE	AM	PM	TIME
						ARRIVED AT JOB				
						START OPERATION				
						FINISH OPERATION				
						RELEASED				
						MILES FROM STATION TO WELL				

CONTRACT CONDITIONS: (This contract must be signed before the job is commenced or merchandise is delivered).

The undersigned is authorized to execute this contract as an agent of the customer. As such, the undersigned agrees and acknowledges that this contract for services, materials, products, and/or supplies includes all of and only those terms and conditions appearing on the front and back of this document. No additional or substitute terms and/or conditions shall become a part of this contract without the written consent of an officer of Basic Energy Services LP.

SIGNED: \_\_\_\_\_  
(WELL OWNER, OPERATOR, CONTRACTOR OR AGENT)

ITEM/PRICE REF. NO.	MATERIAL, EQUIPMENT AND SERVICES USED	UNIT	QUANTITY	UNIT PRICE	\$ AMOUNT
1010	60/40 Pvc	SA	220		2,640.00
1011	20' x 30'	16	380		958.00
1012	P.V. 1500	20	80		135.00
1013	Heavy eq. mat	20	60		450.00
1014	Pvc + bulkhead	20	285		712.50
1015	40' x 10' x 40' x 5' x 5'	40	1		2,520.00
1016	60' x 1' x 1' x 1'	50	220		308.00
1017					
1018					
1019					
1020					
1021					
1022					
1023					
1024					
1025					
1026					
1027					
1028					
1029					
1030					
1031					
1032					
1033					
1034					
1035					
1036					
1037					
1038					
1039					
1040					
1041					
1042					
1043					
1044					
1045					
1046					
1047					
1048					
1049					
1050					
1051					
1052					
1053					
1054					
1055					
1056					
1057					
1058					
1059					
1060					
1061					
1062					
1063					
1064					
1065					
1066					
1067					
1068					
1069					
1070					
1071					
1072					
1073					
1074					
1075					
1076					
1077					
1078					
1079					
1080					
1081					
1082					
1083					
1084					
1085					
1086					
1087					
1088					
1089					
1090					
1091					
1092					
1093					
1094					
1095					
1096					
1097					
1098					
1099					
1100					

SUB TOTAL 7195.50

CHEMICAL / ACID DATA:			

SERVICE & EQUIPMENT	%TAX ON \$
MATERIALS	%TAX ON \$

TOTAL 3957.58

SERVICE REPRESENTATIVE Mike Matari	THE ABOVE MATERIAL AND SERVICE ORDERED BY CUSTOMER AND RECEIVED BY: J.W.W.
------------------------------------	--

FIELD SERVICE ORDER NO. \_\_\_\_\_ (WELL OWNER OPERATOR CONTRACTOR OR AGENT)



Customer	Jones oil 11c	Lease No.		Date	2-11-18			
Lease	Dunn	Well #	1					
Field Order #	16332	Station	PIATR	Casing	Depth	4003		
					County	STAFFORD		
						State	KS	
Type Job	2-42 Plug to Abandon			Formation			Legal Description	24-235-14W

PIPE DATA		PERFORATING DATA		FLUID USED		TREATMENT RESUME		
Casing Size	Tubing Size	Shots/Ft		Acid	CMT 220 SK 60/40 POZ	RATE	PRESS	ISIP
Depth	Depth	From	To	Pre Pad	490 SK	Max		5 Min.
Volume	Volume	From	To	Pad		Min		10 Min.
Max Press	Max Press	From	To	Frac		Avg		15 Min.
Well Connection	Annulus Vol.	From	To			HHP Used		Annulus Pressure
Plug Depth	Packer Depth	From	To	Flush		Gas Volume		Total Load

Customer Representative	Doug Budig	Station Manager	WESTERMAN	Treater	MATTAI
-------------------------	------------	-----------------	-----------	---------	--------

Service Units	83353	84980	19843	19959	19918				
Driver Names	MATTAI	McGraw		TREVINO					

Time	Casing Pressure	Tubing Pressure	Bbls. Pumped	Rate	Service Log
					ON LOCATION / SAREY MEETING
					1ST Plug @ 4003
11:13	300		15	5	Pump 15 bbls water
11:17	300		12.7	4	Mix 50 SK 60/40 POZ
11:21	100		5	5	START water disp
11:23	100		40	5	START mud disp
					2nd Plug @ 860'
1:17	250		10	3	Pump 10 bbl water
1:20	200		12.7	3	Mix 50 SK 60/40 POZ
1:23	150		5	3	START disp.
					3rd Plug @ 670'
1:40	200		5	3	Pump 5 bbl water
1:42	200		12.7	3	Mix 50 SK 60/40 POZ
1:45	150		3	3	START disp.
					4th Plug @ 60'
3:00	-		5	3	Mix 20 SK 60/40 POZ
					CMT TO SURFACE
3:10			7.5		Plug RAT + mouse hole









1718 16179 A

DATE \_\_\_\_\_ TICKET NO. \_\_\_\_\_

DATE OF JOB <u>2/3/2018</u> DISTRICT <u>PS&amp;H, KS</u>				NEW WELL <input checked="" type="checkbox"/> OLD WELL <input type="checkbox"/> PROD <input type="checkbox"/> INJ <input type="checkbox"/> WDW <input type="checkbox"/> CUSTOMER ORDER NO.:			
CUSTOMER <u>Steve Jones</u>				LEASE <u>Dunn</u> WELL NO. <u>1</u>			
ADDRESS				COUNTY <u>St. Louis</u> STATE <u>KS</u>			
CITY STATE				SERVICE CREW <u>Darin, Ed, m. Clymer</u>			
AUTHORIZED BY				JOB TYPE: <u>242/8 1/2 Surface</u>			
EQUIPMENT#	HRS	EQUIPMENT#	HRS	EQUIPMENT#	HRS	TRUCK CALLED	DATE <u>2/3</u> AM <input checked="" type="checkbox"/> PM <input type="checkbox"/> TIME <u>12:30</u>
<u>19843</u>	<u>1</u>					ARRIVED AT JOB	<u>2/3</u> AM <input checked="" type="checkbox"/> PM <input type="checkbox"/> <u>2:00</u>
<u>19918</u>	<u>1/2</u>					START OPERATION	<u>2/3</u> AM <input checked="" type="checkbox"/> PM <input type="checkbox"/> <u>6:30</u>
						FINISH OPERATION	<u>2/3</u> AM <input checked="" type="checkbox"/> PM <input type="checkbox"/> <u>7:30</u>
						RELEASED	<u>2/3</u> AM <input checked="" type="checkbox"/> PM <input type="checkbox"/> <u>8:00</u>
						MILES FROM STATION TO WELL	<u>31</u>

**CONTRACT CONDITIONS:** (This contract must be signed before the job is commenced or merchandise is delivered).

The undersigned is authorized to execute this contract as an agent of the customer. As such, the undersigned agrees and acknowledges that this contract for services, materials, products, and/or supplies includes all of and only those terms and conditions appearing on the front and back of this document. No additional or substitute terms and/or conditions shall become a part of this contract without the written consent of an officer of Basic Energy Services LP.

SIGNED: L. D. Blue  
(WELL OWNER, OPERATOR, CONTRACTOR OR AGENT)

[illegible]

SUB TOTAL	12,562	00
-----------	--------	----

CHEMICAL / ACID DATA:			

SERVICE & EQUIPMENT	%TAX ON \$		
MATERIALS	%TAX ON \$		

DISCOUNT	TOTAL	6,909	10
----------	-------	-------	----

SERVICE REPRESENTATIVE <i>Marin Euland</i>	THE ABOVE MATERIAL AND SERVICE ORDERED BY CUSTOMER AND RECEIVED BY <i>A. House Buey</i>
FIELD SERVICE ORDER NO.	(WELL OWNER OPERATOR CONTRACTOR OR AGENT)





1718 ~~16179~~ A

DATE \_\_\_\_\_ TICKET NO. \_\_\_\_\_

**CONTRACT CONDITIONS:** (This contract must be signed before the job is commenced or merchandise is delivered).

SIGNED [Signature]  
(WELL OWNER, OPERATOR, CONTRACTOR OR AGENT)

SUB TOTAL	12,562	00
-----------	--------	----

SERVICE & EQUIPMENT	%TAX ON \$		
MATERIALS	%TAX ON \$		
DISCOUNT TOTAL		6,809	10

LOUD LITHO - Abilene, TX



Customer <b>James C. Dunn</b>	Lease No.	Date <b>2/3/2018</b>
Lease <b>Dunn</b>	Well # <b>1</b>	
Field Order # <b>16179</b>	Station <b>Pratt, KS</b>	Casing <b>8 5/8</b> Depth <b>639</b> County <b>Stafford</b> State <b>KS</b>
Type Job <b>242/8 5/8 Surface</b>	Formation <b>TD-639</b>	Legal Description <b>24-235-146</b>

PIPE DATA		PERFORATING DATA		FLUID USED	TREATMENT RESUME		
Casing Size	Tubing Size	Shots/Ft		Acid	RATE	PRESS	ISIP
<b>8 5/8</b>							
Depth <b>639</b>	Depth	From	To	Pre Pad	Max		5 Min.
Volume <b>40.7</b>	Volume	From	To	Pad	Min		10 Min.
Max Press	Max Press	From	To	Frac	Avg		15 Min.
Well Connection	Annulus Vol.	From	To		HHP Used		Annulus Pressure
Plug Depth <b>619</b>	Packer Depth	From	To	Flush <b>Water</b>	Gas Volume		Total Load

Customer Representative <b>Doug</b>	Station Manager <b>Justin Westerman</b>	Treater <b>Darin Franklin</b>
Service Units <b>92911 84981 19843 19959 19918</b>		
Driver Names <b>Darin Ed Ed Clymer Clymer</b>		

Time	Casing Pressure	Tubing Pressure	Bbls. Pumped	Rate	Service Log
<b>2:00 PM</b>					On Location / Safety meeting
					200SK A-con Blend, 3% Calcium Chloride, 0.25pps Cellofiske
					200SK Common Cement, 2% Calcium Chloride, 0.25pps Cellofiske
					Pipe on bottom & break Circulation
<b>6:30 PM</b>	<b>200</b>		<b>3</b>	<b>5</b>	Pump 3 bbls water
	<b>200</b>		<b>88</b>	<b>5</b>	Mix 200SK 1992 Cement
	<b>200</b>		<b>43</b>	<b>5</b>	Mix 200SK 1991 Cement
					Shut down
					Release Plug
	<b>200</b>		<b>0</b>		Start displacement
<b>7:30 PM</b>	<b>200</b>		<b>39</b>		Shut in
					Cement die Circulate
					Job Complete / Darin & crew
					Thank you!!!