

GEOLOGICAL REPORT

Larry A. Nicholson

NAD 83
37 688723
98.572459

COMPANY **C&M Exploration, LLC**
 API # **15-151-22465** FIELD # **Southfork**
 LEASE **Rachel Davidson #31-2** WELL # **#31-2**
 LOCATION **S2 N2 NW NW**
 SURVEY **S05' FNL 660' FWL**
 SECTION **31** TWP **27S** RGE **11W**
 COUNTY **Pratt** STATE **Kansas**

ELEVATIONS
 K.B. **1730**
 D.F. _____
 G.L. **1722**
 All measurements from K.B. 1730

CASING RECORD

Conductor	Surface	Production
338	338	400
338	338	400
338	338	400

CONTRACTOR **Duke Drilling TP Vasquez, Rig # 2**
 SPUD **11-21-17 9:15 am** COMP. **1730**
 RTD **4600 10:10 am 11-29-17** LTD **4599**
 MUD UP AT **3206**
 MUD TYPE **Chemical Mud Co. B**
 SAMPLES SAVED FROM **3200** TO **RTD**
 DRILLING TIME FROM **3200** TO **RTD**
 SAMPLES EXAMINED FROM **3200** TO **RTD**
 GEOLOGICAL SUPERVISION BY **LARRY A. NICHOLSON**
 WELLSITE GEOLOGIST **LARRY A. NICHOLSON**
 GEOLOGIST **Charles Crawford**

FORMATION TOPS & STRUCTURAL POSITION

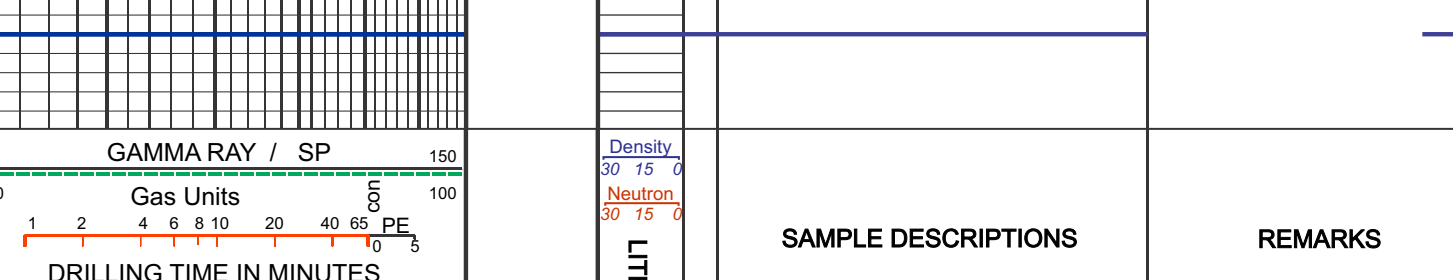
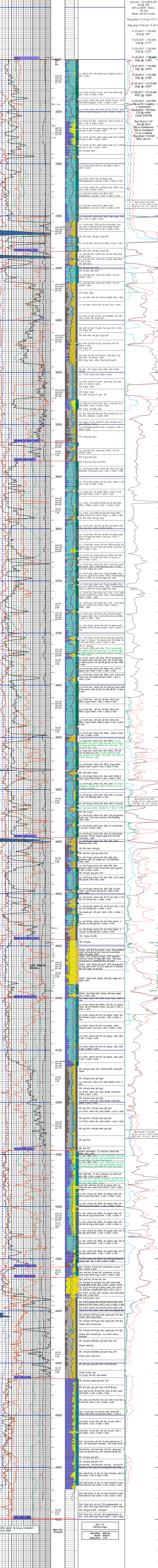
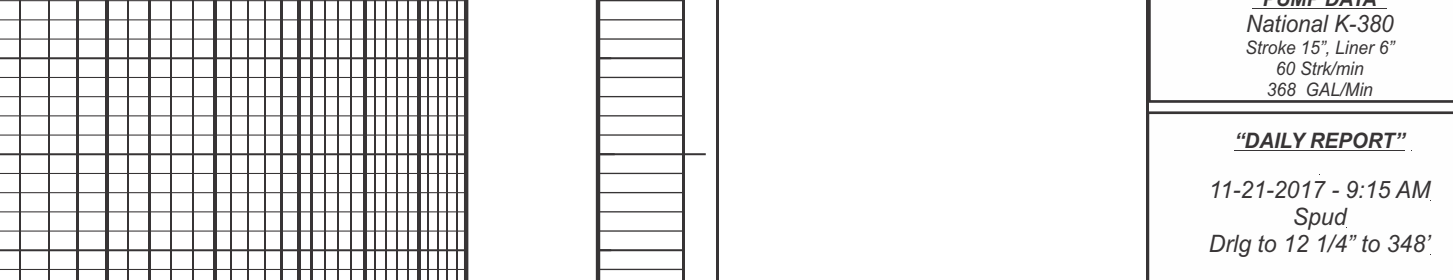
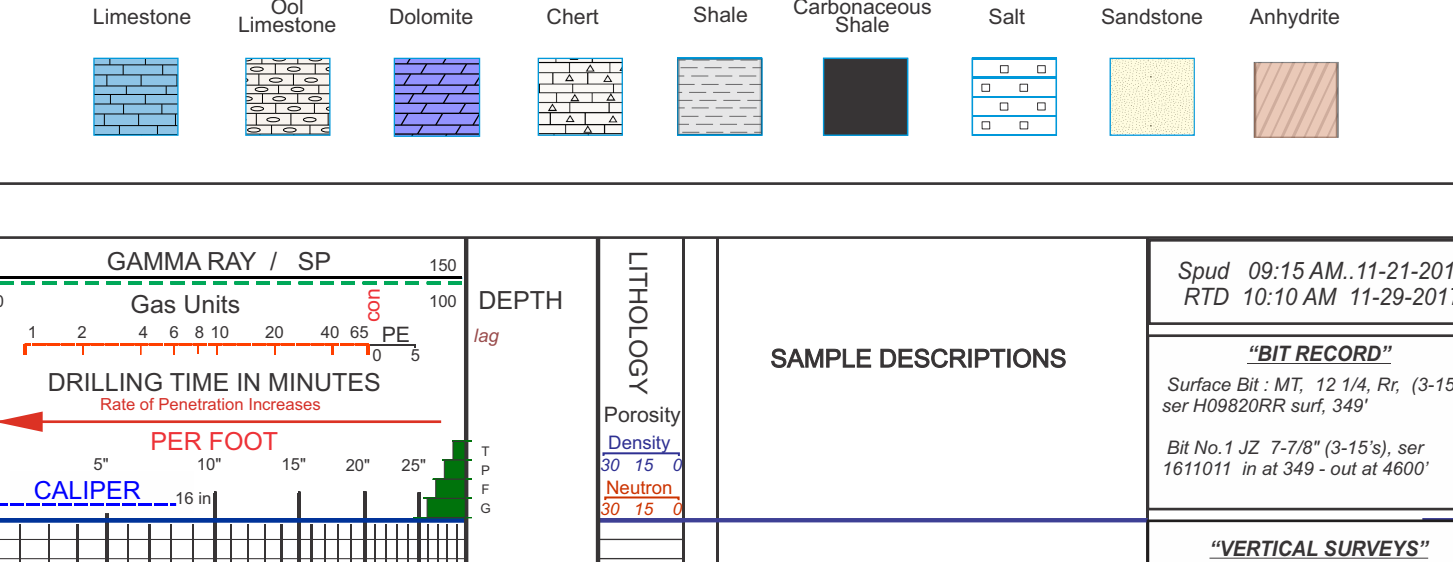
FORMATION	SAMPLE TOPS	SURSEA DATUM	ELEC LOG TOPS	SURSEA DATUM	REFERENCE WELL
HEEBNER	3384	-1654	3388	-1658	3380 -1648 -6
BROWN LM	3567	-1837	3574	-1844	3572 -1840 +3
LANS A	3585	-1865	3588	-1868	3582 -1868 +3
SUWGE	3944	-2216	3952	-2222	3952 -2220 +4
MISS CHAT	4046	-2314	4052	-2322	4052 -2320 +6
MISS LM	4100	-2370	4104	-2374	4104 -2372 +2
VIOLA	4246	-2516	4250	-2520	4250 -2518 +2
SIMP DOL	4358	-2628	4358	-2628	4358 -2626 -2
SIMP SD	4368	-2638	4372	-2642	4372 -2640 +2
ARB	4465	-2735	4471	-2741	4470 -2738 +3
RTD	4600	-2870	4600	-2870	4510 -2778
LTD	4599	-2869	4600	-2870	4512 -2780

REFERENCE WELLS
 A: C&M Exploration Davidson #1-30 330 FSL 660 FWL 30-127S-R11W KB 2928
 B: _____

REMARKS & RECOMMENDATIONS:

LAN 762, Modified 5/05, 11/11, 4/12 Hanover, KS 66845
 1inch = 25.4mm 8.5 x 9.5 216 mm x 2460 mm

LEGEND



COMPANY **C&M Exploration, LLC** ELEVATIONS
 LEASE **Rachel Davidson #31-2 S2 N2 NW NW** K.B. **1730**
 LOCATION **505' FNL 660' FWL** SEC **31** TWP **27S** RGE **11W** D.F. _____
 COUNTY **Pratt** STATE **Ks** All measurements from **K.B. 1730**