

KANSAS CORPORATION COMMISSION
OIL & GAS CONSERVATION DIVISION

Form must be Typed
Form must be signed

TEMPORARY ABANDONMENT WELL APPLICATION

All blanks must be complete

OPERATOR: License#
Name:
Address 1:
Address 2:
City: State: Zip:
Contact Person:
Phone:
Contact Person Email:
Field Contact Person:
Field Contact Person Phone:

API No. 15-
Spot Description:
Sec. Twp. S. R.
GPS Location: Lat, Long
Datum: NAD27, NAD83, WGS84
County: Elevation:
Lease Name: Well #:
Well Type: Oil, Gas, OG, WSW, Other
SWD Permit #: ENHR Permit #:
Gas Storage Permit #:
Spud Date: Date Shut-In:

Table with 7 columns: Conductor, Surface, Production, Intermediate, Liner, Tubing. Rows include Size, Setting Depth, Amount of Cement, Top of Cement, Bottom of Cement.

Casing Fluid Level from Surface: How Determined? Date:
Casing Squeeze(s): to w / sacks of cement, to w / sacks of cement. Date:
Do you have a valid Oil & Gas Lease? Yes No
Depth and Type: Junk in Hole at Tools in Hole at Casing Leaks: Yes No Depth of casing leak(s):
Type Completion: ALT. I ALT. II Depth of: DV Tool: w / sacks of cement Port Collar: w / sack of cement
Packer Type: Size: Inch Set at: Feet
Total Depth: Plug Back Depth: Plug Back Method:

Geological Data:

Table with 4 columns: Formation Name, Formation Top, Formation Base, Completion Information. Rows 1 and 2.

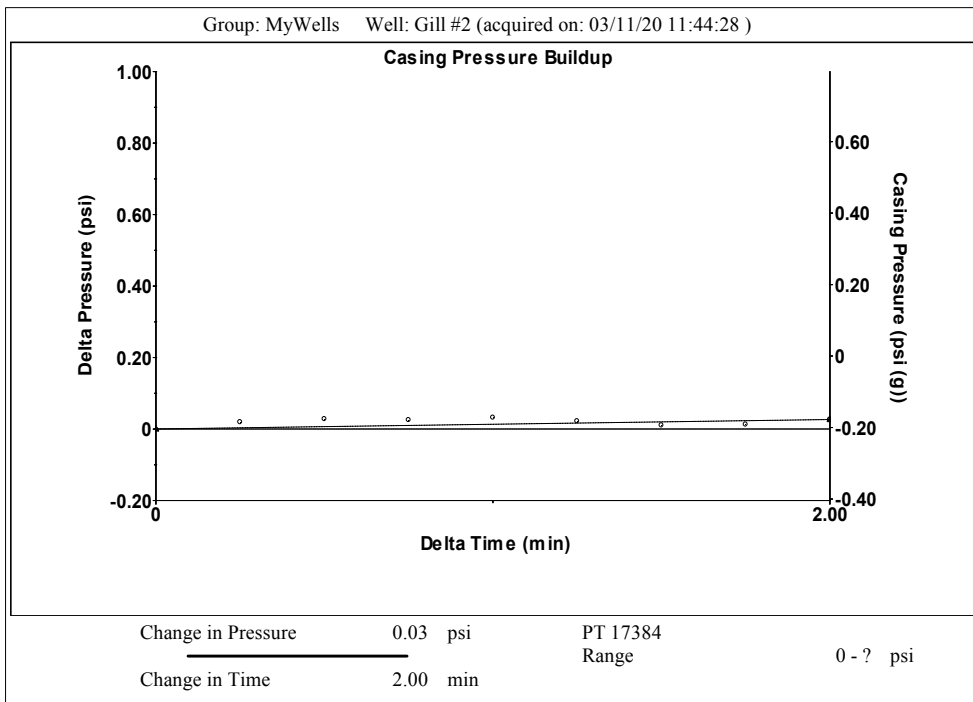
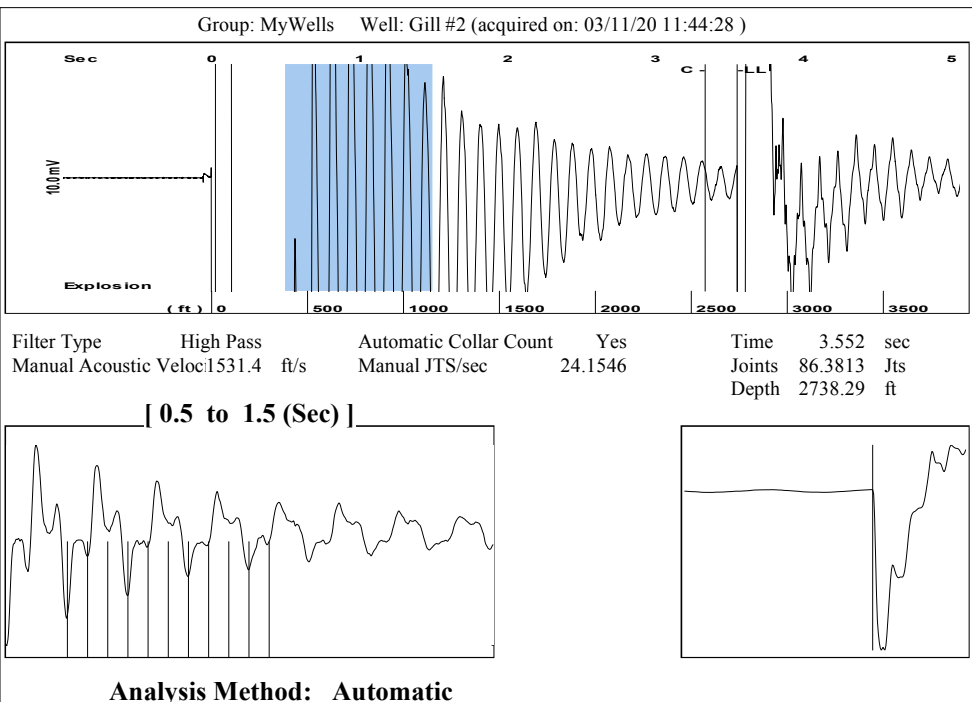
UNDER PENALTY OF PERJURY I HEREBY ATTEST THAT THE INFORMATION CONTAINED HEREIN IS TRUE AND CORRECT TO THE BEST OF MY KNOWLEDGE

Submitted Electronically

Do NOT Write in This Space - KCC USE ONLY
Date Tested: Results: Date Plugged: Date Repaired: Date Put Back in Service:
Review Completed by: Comments:
TA Approved: Yes Denied Date:

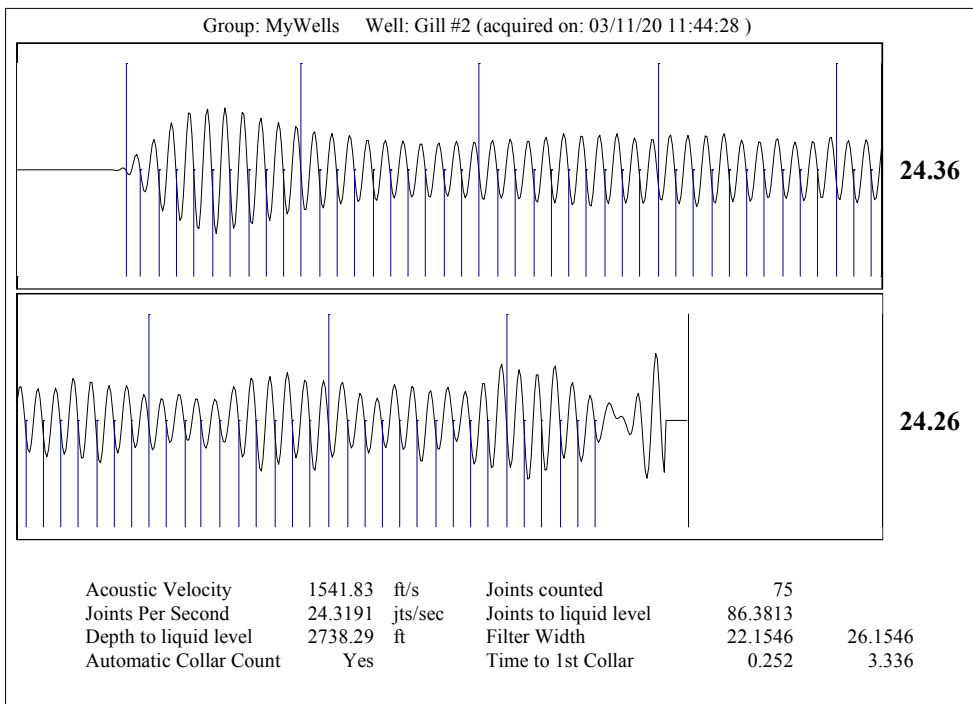
Mail to the Appropriate KCC Conservation Office:

Map of Kansas with 4 numbered districts. Table with 2 columns: Office Name/Address, Phone Number.



Group: MyWells Well: Gill #2 (acquired on: 03/11/20 11:44:28 )

<b>Production</b>	<b>Potential</b>	<b>Casing Pressure</b>		<b>Producing</b>	
Current	- * - BBL/D	-0.2 psi (g)		<b>Annular Gas Flow</b>	0 Mscf/D
Oil - * -	- * - BBL/D	Casing Pressure Buildup		<b>% Liquid</b>	100 %
Water - * -	- * - Mscf/D	0.026 psi			
Gas - * -		2.00 min			
<b>IPR Method</b>	Vogel	<b>Gas/Liquid Interface Pressure</b>			
PBHP/SBHP	- * -	0.6 psi (g)			
Production Efficiency	0.0				
<b>Oil</b> 40 deg.API		<b>Liquid Level Depth</b>			
<b>Water</b> 1.05 Sp.Gr.H2O		2738.29 ft			
<b>Gas</b> 0.55 Sp.Gr.AIR		<b>Pump Intake Depth</b>			
		4255.00 ft			
<b>Acoustic Velocity</b> 1541.83 ft/s		<b>Formation Depth</b>			
		4255.00 ft			
<b>Formation Submergence</b>					
Total Gaseous Liquid Column HT (TVD)	1517 ft				
Equivalent Gas Free Liquid HT (TVD)	1517 ft				
<b>Acoustic Test</b>					
		<b>Pump Intake</b>			
		504.6 psi (g)			
		<b>Producing BHP</b>			
		504.6 psi (g)			
		<b>Static BHP</b>			
		- * - psi (g)			



April 07, 2020

Melody C. Fletcher  
Oil Producers Inc. of Kansas  
1710 WATERFRONT PKWY  
WICHITA, KS 67206-6603

Re: Temporary Abandonment  
API 15-101-21376-00-00  
GILL 2  
NE/4 Sec.35-16S-29W  
Lane County, Kansas

Dear Melody C. Fletcher:

"Your temporary abandonment (TA) application for the well listed above has been approved. In accordance with K.A.R. 82-3-111 the TA status of this well will expire 04/07/2021.

- \* If you return this well to service or plug it, please notify the District Office.
- \* If you sell this well you are required to file a Transfer of Operator form, T-1.
- \* If the well will remain temporarily abandoned, you must submit a new TA application, CP-111, before 04/07/2021.

You may contact me at the number above if you have questions.

Very truly yours,

Michael Maier"