

KANSAS CORPORATION COMMISSION
OIL & GAS CONSERVATION DIVISION

TEMPORARY ABANDONMENT WELL APPLICATION

OPERATOR: License#
Name:
Address 1:
Address 2:
City: State: Zip:
Contact Person:
Phone:
Contact Person Email:
Field Contact Person:
Field Contact Person Phone:

API No. 15-
Spot Description:
Sec. Twp. S. R.
GPS Location: Lat: Long:
Datum: NAD27 NAD83 WGS84
County: Elevation:
Lease Name: Well #:
Well Type: Oil Gas OG WSW Other:
SWD Permit #: ENHR Permit #:
Gas Storage Permit #:
Spud Date: Date Shut-In:

Table with 7 columns: Conductor, Surface, Production, Intermediate, Liner, Tubing. Rows include Size, Setting Depth, Amount of Cement, Top of Cement, Bottom of Cement.

Casing Fluid Level from Surface: How Determined? Date:
Casing Squeeze(s): to w / sacks of cement, to w / sacks of cement. Date:
Do you have a valid Oil & Gas Lease? Yes No
Depth and Type: Junk in Hole at Tools in Hole at Casing Leaks: Yes No Depth of casing leak(s):
Type Completion: ALT. I ALT. II Depth of: DV Tool: w / sacks of cement Port Collar: w / sack of cement
Packer Type: Size: Inch Set at: Feet
Total Depth: Plug Back Depth: Plug Back Method:

Geological Data:

Table with 4 columns: Formation Name, Formation Top, Formation Base, Completion Information. Rows 1 and 2.

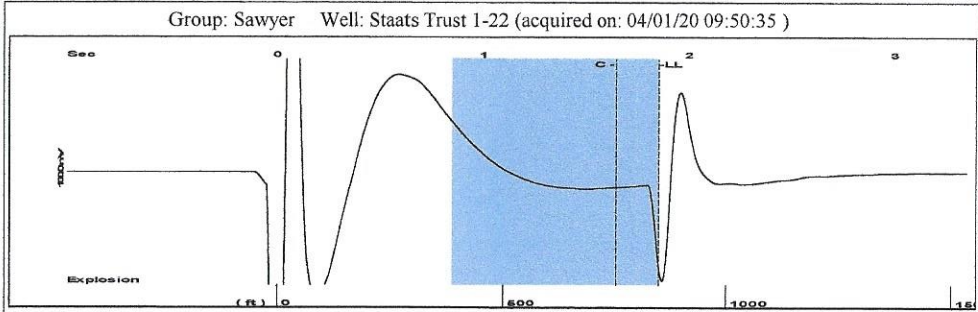
UNDER PENALTY OF PERJURY I HEREBY ATTEST THAT THE INFORMATION CONTAINED HEREIN IS TRUE AND CORRECT TO THE BEST OF MY KNOWLEDGE

Submitted Electronically

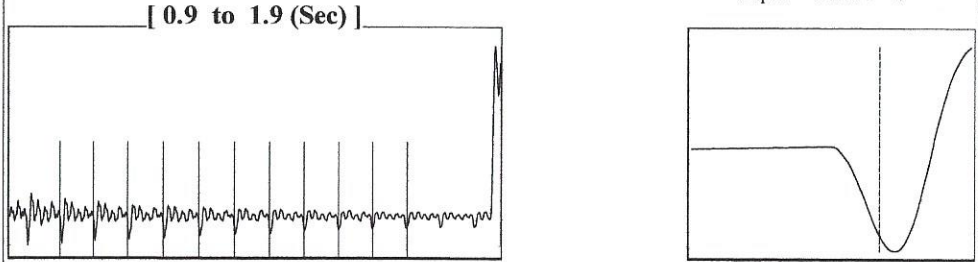
Form with fields: Do NOT Write in This Space - KCC USE ONLY, Date Tested, Results, Date Plugged, Date Repaired, Date Put Back in Service, Review Completed by, Comments, TA Approved: Yes Denied, Date.

Mail to the Appropriate KCC Conservation Office:

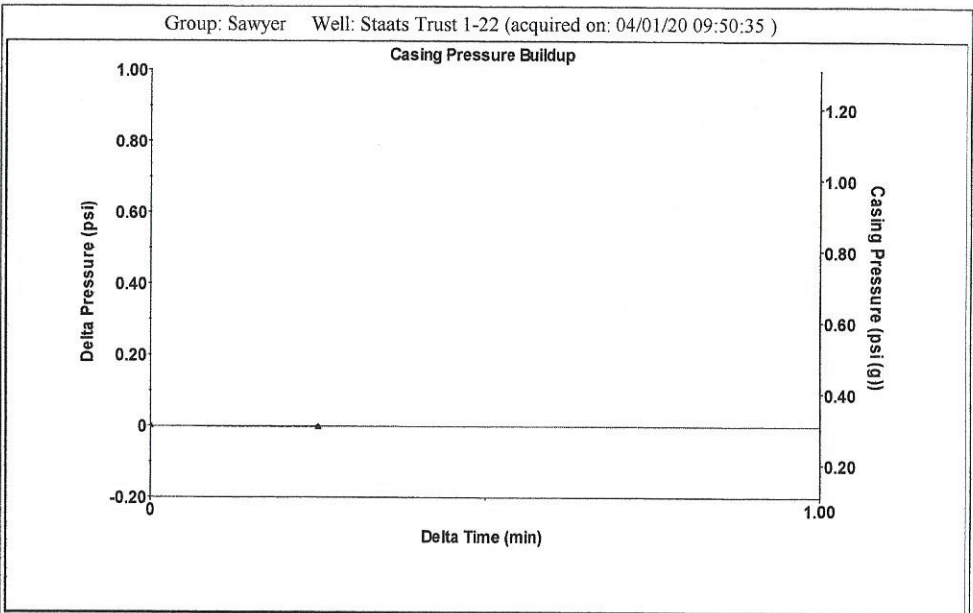
Table with 3 columns: District Office #, Address, Phone. Rows 1-4.



Filter Type High Pass Automatic Collar Count Yes Time 1.852 sec
 Manual Acoustic Velo 916.477 ft/s Manual JTS/sec 14.2045 Joints 26.2597 Jts
 Depth 847.14 ft



Analysis Method: Automatic



Change in Pressure -0.00 psi PT13440
 Change in Time 0.25 min Range 0 - ? psi

Group: Sawyer Well: Staats Trust 1-22 (acquired on: 04/01/20 09:50:35)

Production Current	Potential	Casing Pressure	Producing
Oil - * -	- * - BBL/D	0.3 psi (g)	Annular Gas Flow
Water - * -	- * - BBL/D	Casing Pressure Buildup	0 Mscf/D
Gas - * -	- * - Mscf/D	-0.0 psi	% Liquid
		0.25 min	100 %
IPR Method	Vogel	Gas/Liquid Interface Pressure	
PBHP/SBHP	- * -	0.8 psi (g)	
Production Efficiency	0.0		
Oil 40 deg.API		Liquid Level Depth	
Water 1.05 Sp.Gr.H2O		847.14 ft	
Gas 1.04 Sp.Gr.AIR		Pump Intake Depth	
		3968.00 ft	
Acoustic Velocity 914.836 ft/s		Formation Depth	
		3822.00 ft	
Formation Submergence		Pump Intake	
Total Gaseous Liquid Column HT (TVD)	3121 ft	1018.8 psi (g)	
Equivalent Gas Free Liquid HT (TVD)	3121 ft	Producing BHP	
		974.6 psi (g)	
Acoustic Test		Static BHP	
		- * - psi (g)	

Group: Sawyer Well: Staats Trust 1-22 (acquired on: 04/01/20 09:50:35)

14.18

Acoustic Velocity	914.836 ft/s	Joints counted	19
Joints Per Second	14.1791 jts/sec	Joints to liquid level	26.2597
Depth to liquid level	847.138 ft	Filter Width	12.2045
Automatic Collar Count	Yes	Time to 1st Collar	0.3
			16.2045
			1.64

Susan K. Duffy, Chair
Shari Feist Albrecht, Commissioner
Dwight D. Keen, Commissioner

Laura Kelly, Governor

April 07, 2020

Loveness Mpanje
F. G. Holl Company L.L.C.
9431 E CENTRAL STE 100
WICHITA, KS 67206-2563

Re: Temporary Abandonment
API 15-007-23012-00-00
STAATS TRUST 1-22
NW/4 Sec.22-30S-14W
Barber County, Kansas

Dear Loveness Mpanje:

"Your temporary abandonment (TA) application for the well listed above has been approved. In accordance with K.A.R. 82-3-111 the TA status of this well will expire 04/07/2021.

- * If you return this well to service or plug it, please notify the District Office.
- * If you sell this well you are required to file a Transfer of Operator form, T-1.
- * If the well will remain temporarily abandoned, you must submit a new TA application, CP-111, before 04/07/2021.

You may contact me at the number above if you have questions.

Very truly yours,

Michael Maier"