

KANSAS CORPORATION COMMISSION
OIL & GAS CONSERVATION DIVISION

TEMPORARY ABANDONMENT WELL APPLICATION

OPERATOR: License#
Name:
Address 1:
Address 2:
City: State: Zip:
Contact Person:
Phone:
Contact Person Email:
Field Contact Person:
Field Contact Person Phone:

API No. 15-
Spot Description:
Sec. Twp. S. R.
GPS Location: Lat: Long:
Datum: NAD27 NAD83 WGS84
County: Elevation:
Lease Name: Well #:
Well Type: Oil Gas OG WSW Other:
SWD Permit #: ENHR Permit #:
Gas Storage Permit #:
Spud Date: Date Shut-In:

Table with 7 columns: Conductor, Surface, Production, Intermediate, Liner, Tubing. Rows include Size, Setting Depth, Amount of Cement, Top of Cement, Bottom of Cement.

Casing Fluid Level from Surface: How Determined? Date:
Casing Squeeze(s): to w / sacks of cement, to w / sacks of cement. Date:
Do you have a valid Oil & Gas Lease? Yes No
Depth and Type: Junk in Hole at Tools in Hole at Casing Leaks: Yes No Depth of casing leak(s):
Type Completion: ALT. I ALT. II Depth of: DV Tool: w / sacks of cement Port Collar: w / sack of cement
Packer Type: Size: Inch Set at: Feet
Total Depth: Plug Back Depth: Plug Back Method:

Geological Data:

Table with 4 columns: Formation Name, Formation Top, Formation Base, Completion Information. Rows 1 and 2.

UNDER PENALTY OF PERJURY I HEREBY ATTEST THAT THE INFORMATION CONTAINED HEREIN IS TRUE AND CORRECT TO THE BEST OF MY KNOWLEDGE

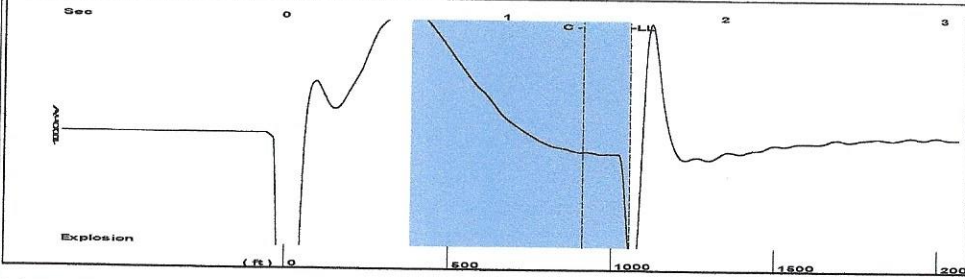
Submitted Electronically

Do NOT Write in This Space - KCC USE ONLY
Date Tested: Results: Date Plugged: Date Repaired: Date Put Back in Service:
Review Completed by: Comments:
TA Approved: Yes Denied Date:

Mail to the Appropriate KCC Conservation Office:

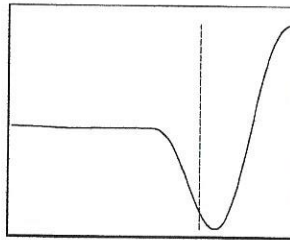
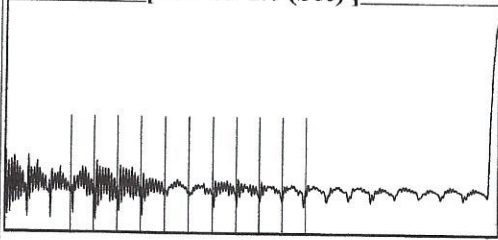
Table with 2 columns: Office Address, Phone. Rows for District Office #1, #2, #3, #4.

Group: Radium Well: Ward Feed Yard A1-19 (acquired on: 04/02/20 07:28:44)



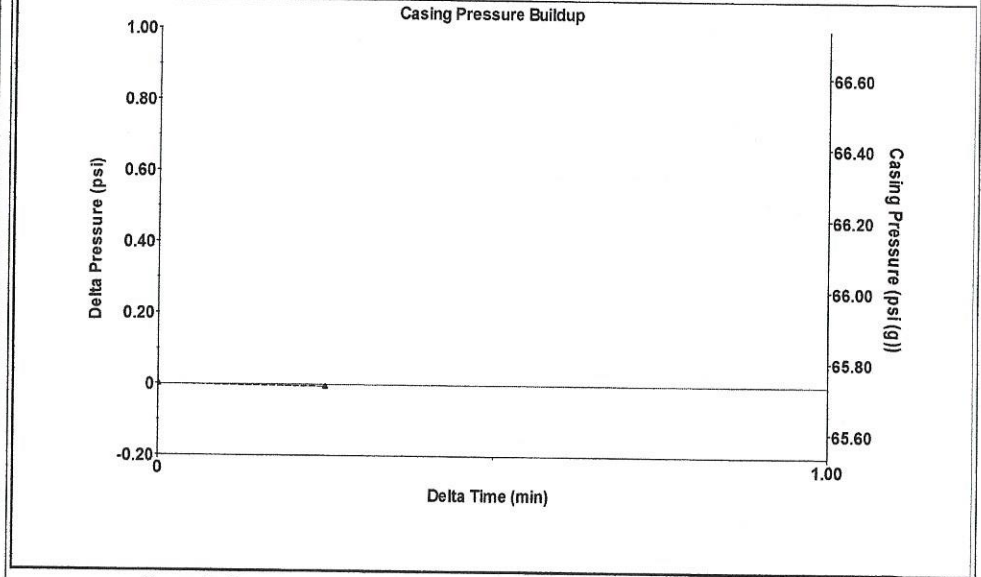
Filter Type High Pass Automatic Collar Count Yes Time 1.57 sec
 Manual Acoustic Velocity 1337.55 ft/s Manual JTS/sec 21.097 Joints 33.3118 Jts
 Depth 1055.98 ft

[0.6 to 1.6 (Sec)]



Analysis Method: Automatic

Group: Radium Well: Ward Feed Yard A1-19 (acquired on: 04/02/20 07:28:44)

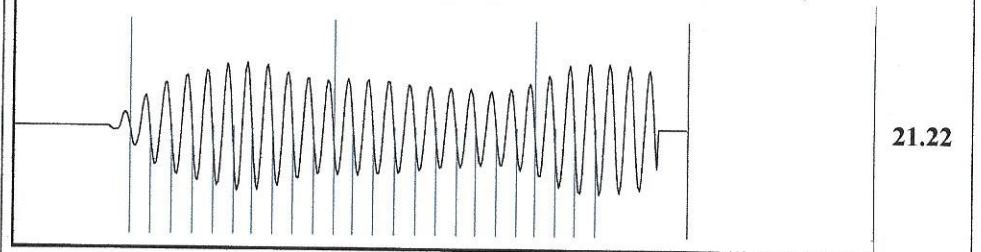


Change in Pressure -0.01 psi PT13440
 Range 0 - ? psi
 Change in Time 0.25 min

Group: Radium Well: Ward Feed Yard A1-19 (acquired on: 04/02/20 07:28:44)

Production	Potential	Casing Pressure	Producing
Current		65.7 psi (g)	
Oil - *-	- *- BBL/D	Casing Pressure Buildup	Annular
Water - *-	- *- BBL/D	-0.0 psi	Gas Flow
Gas - *-	- *- Mscf/D	0.25 min	0 Mscf/D
IPR Method	Vogel	Gas/Liquid Interface Pressure	% Liquid
PBHP/SBHP	- *-	67.7 psi (g)	100 %
Production Efficiency	0.0	Liquid Level Depth	
		1055.98 ft	
Oil 40 deg.API		Pump Intake Depth	
Water 1.05 Sp.Gr.H2O		3830.00 ft	
Gas 0.64 Sp.Gr.AIR		Formation Depth	
Acoustic Velocity	1345.2 ft/s	3815.00 ft	
Formation Submergence		Pump Intake	
Total Gaseous Liquid Column HT (TVD)	2774 ft	981.5 psi (g)	
Equivalent Gas Free Liquid HT (TVD)	2774 ft	Producing BHP	
Acoustic Test		976.8 psi (g)	
		Static BHP	
		- *- psi (g)	

Group: Radium Well: Ward Feed Yard A1-19 (acquired on: 04/02/20 07:28:44)



Acoustic Velocity 1345.2 ft/s Joints counted 23
 Joints Per Second 21.2177 jts/sec Joints to liquid level 33.3118
 Depth to liquid level 1055.98 ft Filter Width 19.097 23.097
 Automatic Collar Count Yes Time to 1st Collar 0.268 1.352

April 07, 2020

Loveness Mpanje
F. G. Holl Company L.L.C.
9431 E CENTRAL STE 100
WICHITA, KS 67206-2563

Re: Temporary Abandonment
API 15-145-21594-00-00
NUSS UNIT 1-12
SE/4 Sec.12-21S-16W
Pawnee County, Kansas

Dear Loveness Mpanje:

"Your temporary abandonment (TA) application for the well listed above has been approved. In accordance with K.A.R. 82-3-111 the TA status of this well will expire 04/07/2021.

- * If you return this well to service or plug it, please notify the District Office.
- * If you sell this well you are required to file a Transfer of Operator form, T-1.
- * If the well will remain temporarily abandoned, you must submit a new TA application, CP-111, before 04/07/2021.

You may contact me at the number above if you have questions.

Very truly yours,

Michael Maier"