

KANSAS CORPORATION COMMISSION  
OIL & GAS CONSERVATION DIVISION

TEMPORARY ABANDONMENT WELL APPLICATION

All blanks must be complete

OPERATOR: License# \_\_\_\_\_  
 Name: \_\_\_\_\_  
 Address 1: \_\_\_\_\_  
 Address 2: \_\_\_\_\_  
 City: \_\_\_\_\_ State: \_\_\_\_\_ Zip: \_\_\_\_\_ + \_\_\_\_\_  
 Contact Person: \_\_\_\_\_  
 Phone: ( \_\_\_\_\_ ) \_\_\_\_\_  
 Contact Person Email: \_\_\_\_\_  
 Field Contact Person: \_\_\_\_\_  
 Field Contact Person Phone: ( \_\_\_\_\_ ) \_\_\_\_\_

API No. 15- \_\_\_\_\_  
 Spot Description: \_\_\_\_\_  
 \_\_\_\_\_ - \_\_\_\_\_ - \_\_\_\_\_ - \_\_\_\_\_ Sec. \_\_\_\_\_ Twp. \_\_\_\_\_ S. R. \_\_\_\_\_  E  W  
 \_\_\_\_\_ feet from  N /  S Line of Section  
 \_\_\_\_\_ feet from  E /  W Line of Section  
 GPS Location: Lat: \_\_\_\_\_, Long: \_\_\_\_\_  
(e.g. xx.xxxxx) (e.g. -xxx.xxxxx)  
 Datum:  NAD27  NAD83  WGS84  
 County: \_\_\_\_\_ Elevation: \_\_\_\_\_  GL  KB  
 Lease Name: \_\_\_\_\_ Well #: \_\_\_\_\_  
 Well Type: (check one)  Oil  Gas  OG  WSW  Other: \_\_\_\_\_  
 SWD Permit #: \_\_\_\_\_  ENHR Permit #: \_\_\_\_\_  
 Gas Storage Permit #: \_\_\_\_\_  
 Spud Date: \_\_\_\_\_ Date Shut-In: \_\_\_\_\_

	Conductor	Surface	Production	Intermediate	Liner	Tubing
Size						
Setting Depth						
Amount of Cement						
Top of Cement						
Bottom of Cement						

Casing Fluid Level from Surface: \_\_\_\_\_ How Determined? \_\_\_\_\_ Date: \_\_\_\_\_  
 Casing Squeeze(s): \_\_\_\_\_ to \_\_\_\_\_ w / \_\_\_\_\_ sacks of cement, \_\_\_\_\_ to \_\_\_\_\_ w / \_\_\_\_\_ sacks of cement. Date: \_\_\_\_\_  
(top) (bottom) (top) (bottom)  
 Do you have a valid Oil & Gas Lease?  Yes  No  
 Depth and Type:  Junk in Hole at \_\_\_\_\_  Tools in Hole at \_\_\_\_\_ Casing Leaks:  Yes  No Depth of casing leak(s): \_\_\_\_\_  
(depth) (depth)  
 Type Completion:  ALT. I  ALT. II Depth of:  DV Tool: \_\_\_\_\_ w / \_\_\_\_\_ sacks of cement  Port Collar: \_\_\_\_\_ w / \_\_\_\_\_ sack of cement  
(depth) (depth)  
 Packer Type: \_\_\_\_\_ Size: \_\_\_\_\_ Inch Set at: \_\_\_\_\_ Feet  
 Total Depth: \_\_\_\_\_ Plug Back Depth: \_\_\_\_\_ Plug Back Method: \_\_\_\_\_

**Geological Data:**

Formation Name	Formation Top	Formation Base	Completion Information
1. _____	At: _____	to _____ Feet	Perforation Interval _____ to _____ Feet or Open Hole Interval _____ to _____ Feet
2. _____	At: _____	to _____ Feet	Perforation Interval _____ to _____ Feet or Open Hole Interval _____ to _____ Feet

UNDER PENALTY OF PERJURY I HEREBY ATTEST THAT THE INFORMATION CONTAINED HEREIN IS TRUE AND CORRECT TO THE BEST OF MY KNOWLEDGE

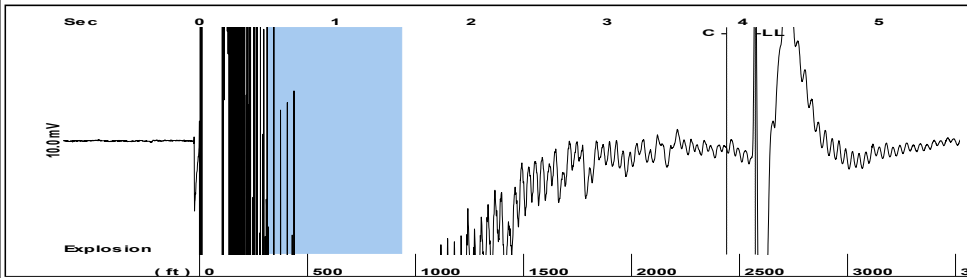
Submitted Electronically

<b>Do NOT Write in This Space - KCC USE ONLY</b>	Date Tested: _____	Results: _____	Date Plugged: _____	Date Repaired: _____	Date Put Back in Service: _____
	Review Completed by: _____ Comments: _____				
TA Approved: <input type="checkbox"/> Yes <input type="checkbox"/> Denied Date: _____					

Mail to the Appropriate KCC Conservation Office:

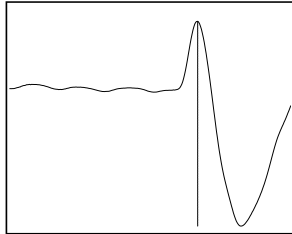
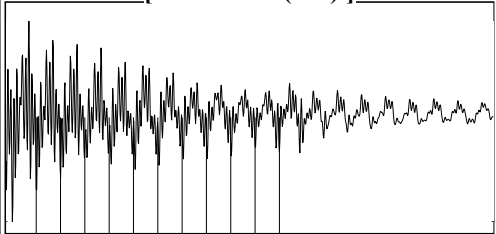
	KCC District Office #1 - 210 E. Frontview, Suite A, Dodge City, KS 67801	Phone 620.682.7933
	KCC District Office #2 - 3450 N. Rock Road, Building 600, Suite 601, Wichita, KS 67226	Phone 316.337.7400
	KCC District Office #3 - 137 E. 21st St., Chanute, KS 66720	Phone 620.902.6450
	KCC District Office #4 - 2301 E. 13th Street, Hays, KS 67601-2651	Phone 785.261.6250

Group: MyWells Well: Mcvey #1A-12 (acquired on: 01/20/20 12:39:07)



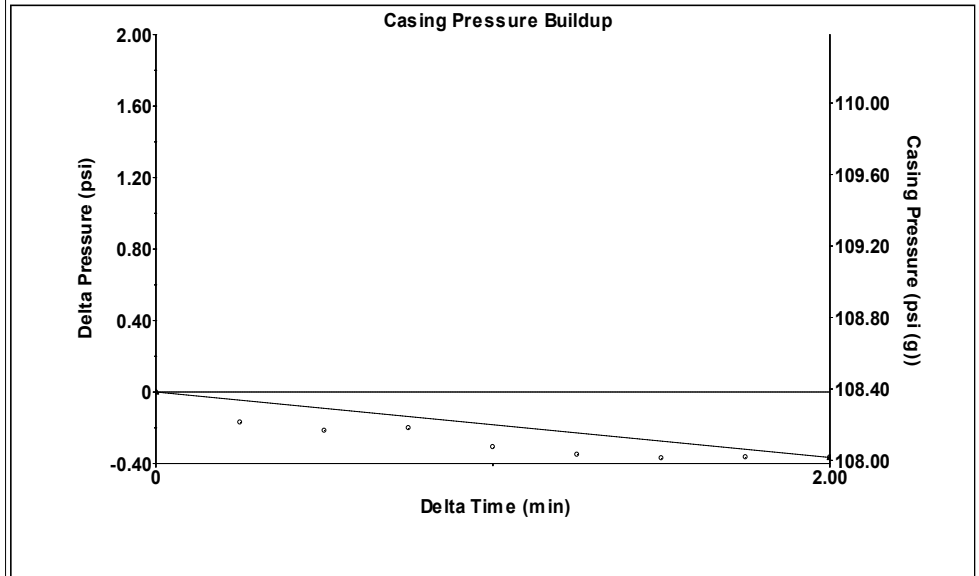
Filter Type High Pass Automatic Collar Count Yes Time 4.091 sec  
 Manual Acoustic Velo 1254.11 ft/s Manual JTS/sec 20.0401 Joints 82.2255 Jts  
 Depth 2572.84 ft

[ 0.5 to 1.5 (Sec) ]



**Analysis Method: Automatic**

Group: MyWells Well: Mcvey #1A-12 (acquired on: 01/20/20 12:39:07)

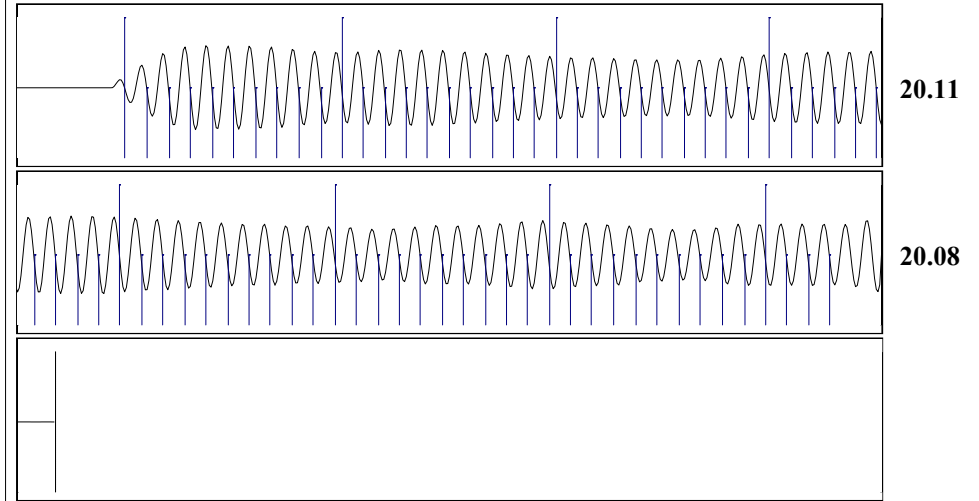


Change in Pressure -0.37 psi PT 17384  
 Change in Time 2.00 min Range 0 - ? psi

Group: MyWells Well: Mcvey #1A-12 (acquired on: 01/20/20 12:39:07)

<b>Production</b>					
Current	Potential		Casing Pressure	Producing	
Oil - *-	- *- BBL/D		108.4 psi (g)		
Water - *-	- *- BBL/D		Casing Pressure Buildup	Annular	
Gas - *-	- *- Mscf/D		-0.366 psi	Gas Flow	0 Mscf/D
			2.00 min	% Liquid	100 %
IPR Method	Vogel		Gas/Liquid Interface Pressure		
PBHP/SBHP	- *-		116.5 psi (g)		
Production Efficiency	0.0				
			Liquid Level Depth		
Oil 40 deg.API			2572.84 ft		
Water 1.05 Sp.Gr.H2O			Pump Intake Depth		
Gas 0.73 Sp.Gr.AIR			2663.00 ft		
Acoustic Velocity	1257.8 ft/s		Formation Depth		
			2663.00 ft		
Formation Submergence			Pump Intake		
Total Gaseous Liquid Column HT (TVD)	90 ft		146.8 psi (g)		
Equivalent Gas Free Liquid HT (TVD)	90 ft		Producing BHP		
			146.8 psi (g)		
Acoustic Test			Static BHP		
			- *- psi (g)		

Group: MyWells Well: Mcvey #1A-12 (acquired on: 01/20/20 12:39:07)



Acoustic Velocity 1257.8 ft/s Joints counted 73  
 Joints Per Second 20.0991 jts/sec Joints to liquid level 82.2255  
 Depth to liquid level 2572.84 ft Filter Width 18.0401 22.0401  
 Automatic Collar Count Yes Time to 1st Collar 0.248 3.88

April 07, 2020

Melody C. Fletcher  
Oil Producers, Inc. of Kansas  
1710 N Waterfront Pkwy  
WICHITA, KS 67206-6603

Re: Temporary Abandonment  
API 15-175-21851-00-00  
MCVEY 1A-12  
NW/4 Sec.12-33S-32W  
Seward County, Kansas

Dear Melody C. Fletcher:

"Your temporary abandonment (TA) application for the well listed above has been approved. In accordance with K.A.R. 82-3-111 the TA status of this well will expire 04/07/2021.

- \* If you return this well to service or plug it, please notify the District Office.
- \* If you sell this well you are required to file a Transfer of Operator form, T-1.
- \* If the well will remain temporarily abandoned, you must submit a new TA application, CP-111, before 04/07/2021.

You may contact me at the number above if you have questions.

Very truly yours,

Michael Maier"