

KANSAS CORPORATION COMMISSION
OIL & GAS CONSERVATION DIVISION

TEMPORARY ABANDONMENT WELL APPLICATION

OPERATOR: License#
Name:
Address 1:
Address 2:
City: State: Zip:
Contact Person:
Phone:
Contact Person Email:
Field Contact Person:
Field Contact Person Phone:

API No. 15-
Spot Description:
Sec. Twp. S. R.
GPS Location: Lat, Long
Datum: NAD27, NAD83, WGS84
County: Elevation:
Lease Name: Well #:
Well Type: Oil, Gas, OG, WSW, Other
Spud Date: Date Shut-In:

Table with 7 columns: Conductor, Surface, Production, Intermediate, Liner, Tubing. Rows include Size, Setting Depth, Amount of Cement, Top of Cement, Bottom of Cement.

Casing Fluid Level from Surface: How Determined? Date:
Casing Squeeze(s): to w / sacks of cement, to w / sacks of cement. Date:
Do you have a valid Oil & Gas Lease? Yes No
Depth and Type: Junk in Hole at Tools in Hole at Casing Leaks: Yes No Depth of casing leak(s):
Type Completion: ALT. I ALT. II Depth of: DV Tool: w / sacks of cement Port Collar: w / sack of cement
Packer Type: Size: Inch Set at: Feet
Total Depth: Plug Back Depth: Plug Back Method:

Geological Data:

Table with 4 columns: Formation Name, Formation Top, Formation Base, Completion Information. Rows 1 and 2.

UNDER PENALTY OF PERJURY I HEREBY ATTEST THAT THE INFORMATION CONTAINED HEREIN IS TRUE AND CORRECT TO THE BEST OF MY KNOWLEDGE

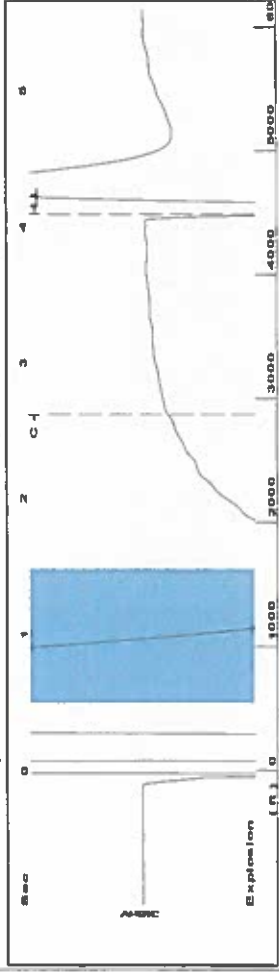
Submitted Electronically

Do NOT Write in This Space - KCC USE ONLY
Date Tested: Results: Date Plugged: Date Repaired: Date Put Back in Service:
Review Completed by: Comments:
TA Approved: Yes Denied Date:

Mail to the Appropriate KCC Conservation Office:

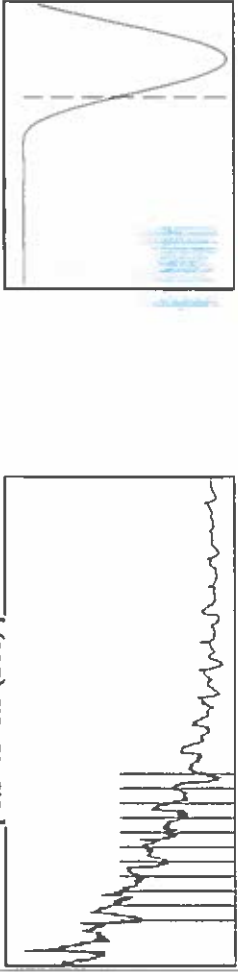
Table with 2 columns: Office Address, Phone. Rows for District Office #1, #2, #3, #4.

Group: SUBLETTE Well: Mabel 1-21 (acquired on: 03/23/20 13:48:58)



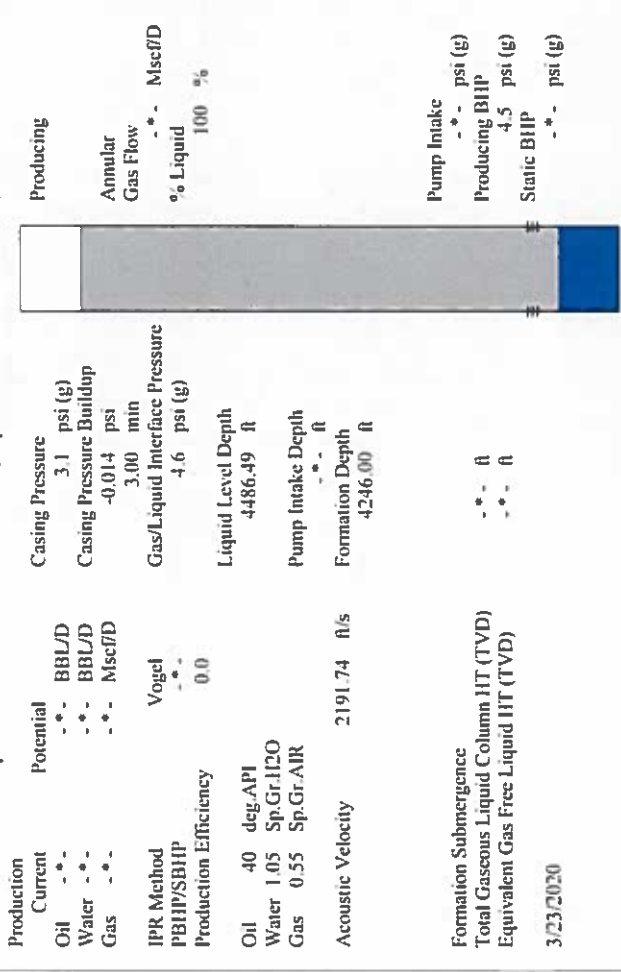
Filter Type High Pass Automatic Collar Count Yes Time 4.094 sec
 Manual Acoustic Velo 2113.33 ft/s Manual JTS/sec 33.3333 Joints 141.53 Jts
 Depth 4486.49 ft

[0.5 to 1.5 (Sec)]



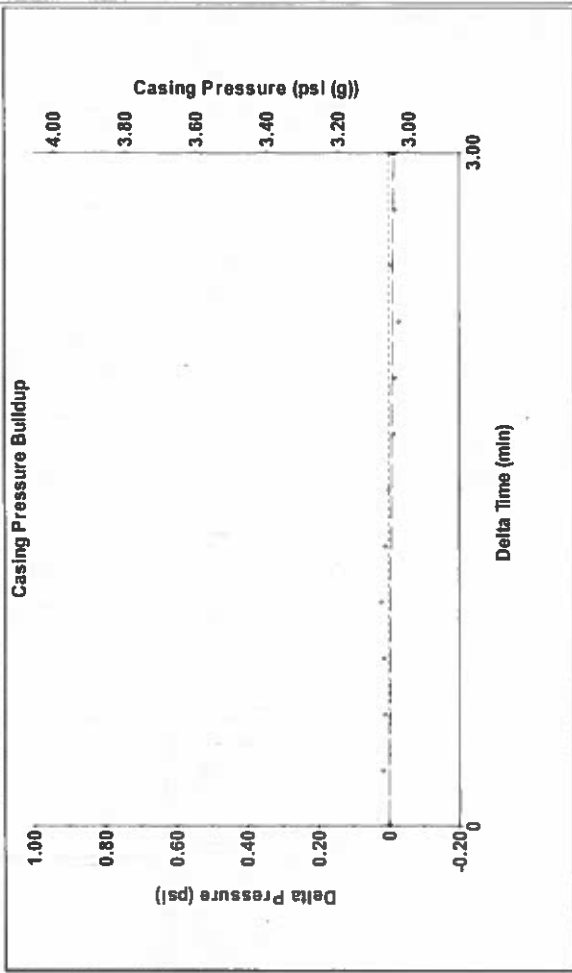
Analysis Method: Automatic

Group: SUBLETTE Well: Mabel 1-21 (acquired on: 03/23/20 13:48:58)



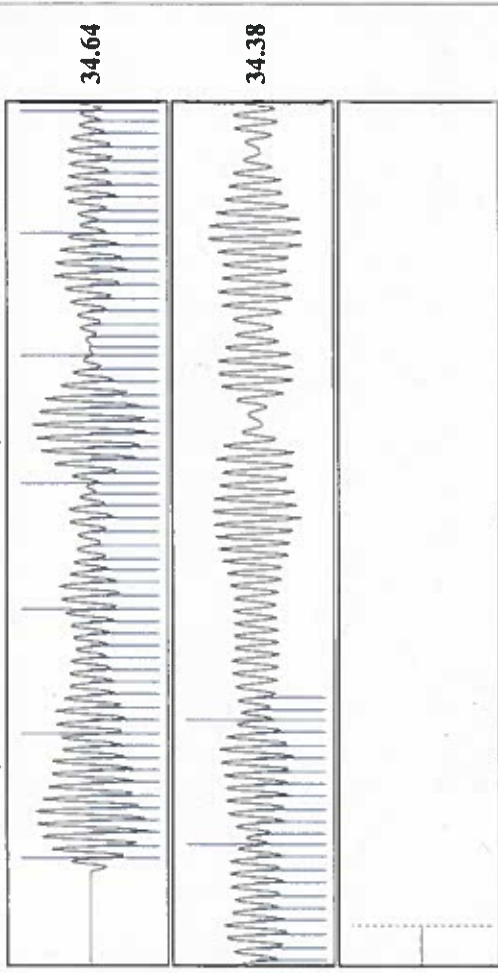
Production Current Potential Casing Pressure 3.1 psi (g)
 Oil -.- BBL/D Casing Pressure Buildup -0.014 psi
 Water -.- BBL/D Gas -.- Mscf/D
 IPR Method Vogel -.- Gas/Liquid Interface Pressure -4.6 psi (g)
 PBHP/SBHP 0.0 Production Efficiency -.-
 Oil 40 deg API Liquid Level Depth 4486.49 ft
 Water 1.05 Sp.Gr./H2O Pump Intake Depth -.- ft
 Gas 0.55 Sp.Gr./AIR Formation Depth 4246.00 ft
 Acoustic Velocity 2191.74 ft/s
 Formation Submergence -.- ft
 Total Gaseous Liquid Column HT (TVD) -.- ft
 Equivalent Gas Free Liquid HT (TVD) -.- ft
 3/23/2020

Group: SUBLETTE Well: Mabel 1-21 (acquired on: 03/23/20 13:48:58)



Change in Pressure -0.01 psi PT16716 Range
 Change in Time 3.00 min

Group: SUBLETTE Well: Mabel 1-21 (acquired on: 03/23/20 13:48:58)



Acoustic Velocity 2191.74 ft/s Joints counted 82
 Joints Per Second 34.57 jts/sec Joints to liquid level 141.53
 Depth to liquid level 4486.49 ft Filter Width 31.3333
 Automatic Collar Count Yes Time to 1st Collar 0.248 2.62

April 07, 2020

Katherine McClurkan
Merit Energy Company, LLC
13727 Noel Road, Suite 1200
Dallas, TX 75240

Re: Temporary Abandonment
API 15-081-22147-00-00
Mabel 1-21
NW/4 Sec.21-29S-33W
Haskell County, Kansas

Dear Katherine McClurkan:

"Your temporary abandonment (TA) application for the well listed above has been approved. In accordance with K.A.R. 82-3-111 the TA status of this well will expire 04/07/2021.

- * If you return this well to service or plug it, please notify the District Office.
- * If you sell this well you are required to file a Transfer of Operator form, T-1.
- * If the well will remain temporarily abandoned, you must submit a new TA application, CP-111, before 04/07/2021.

You may contact me at the number above if you have questions.

Very truly yours,

Michael Maier"