

**KANSAS CORPORATION COMMISSION  
OIL & GAS CONSERVATION DIVISION**

KOLAR Document ID: 1500076

Form CP-111

July 2017

Form must be Typed

Form must be signed

*All blanks must be complete*

**TEMPORARY ABANDONMENT WELL APPLICATION**

OPERATOR: License# \_\_\_\_\_  
 Name: \_\_\_\_\_  
 Address 1: \_\_\_\_\_  
 Address 2: \_\_\_\_\_  
 City: \_\_\_\_\_ State: \_\_\_\_\_ Zip: \_\_\_\_\_ + \_\_\_\_\_  
 Contact Person: \_\_\_\_\_  
 Phone: ( \_\_\_\_\_ ) \_\_\_\_\_  
 Contact Person Email: \_\_\_\_\_  
 Field Contact Person: \_\_\_\_\_  
 Field Contact Person Phone: ( \_\_\_\_\_ ) \_\_\_\_\_

API No. 15- \_\_\_\_\_  
 Spot Description: \_\_\_\_\_  
 \_\_\_\_\_ - \_\_\_\_\_ - \_\_\_\_\_ - \_\_\_\_\_ Sec. \_\_\_\_\_ Twp. \_\_\_\_\_ S. R. \_\_\_\_\_  E  W  
 \_\_\_\_\_ feet from  N /  S Line of Section  
 \_\_\_\_\_ feet from  E /  W Line of Section  
 GPS Location: Lat: \_\_\_\_\_, Long: \_\_\_\_\_  
(e.g. xx.xxxxx) (e.g. -xxx.xxxxx)  
 Datum:  NAD27  NAD83  WGS84  
 County: \_\_\_\_\_ Elevation: \_\_\_\_\_  GL  KB  
 Lease Name: \_\_\_\_\_ Well #: \_\_\_\_\_  
 Well Type: (check one)  Oil  Gas  OG  WSW  Other: \_\_\_\_\_  
 SWD Permit #: \_\_\_\_\_  ENHR Permit #: \_\_\_\_\_  
 Gas Storage Permit #: \_\_\_\_\_  
 Spud Date: \_\_\_\_\_ Date Shut-In: \_\_\_\_\_

	Conductor	Surface	Production	Intermediate	Liner	Tubing
Size						
Setting Depth						
Amount of Cement						
Top of Cement						
Bottom of Cement						

Casing Fluid Level from Surface: \_\_\_\_\_ How Determined? \_\_\_\_\_ Date: \_\_\_\_\_  
 Casing Squeeze(s): \_\_\_\_\_ to \_\_\_\_\_ w / \_\_\_\_\_ sacks of cement, \_\_\_\_\_ to \_\_\_\_\_ w / \_\_\_\_\_ sacks of cement. Date: \_\_\_\_\_  
(top) (bottom) (top) (bottom)  
 Do you have a valid Oil & Gas Lease?  Yes  No  
 Depth and Type:  Junk in Hole at \_\_\_\_\_  Tools in Hole at \_\_\_\_\_ Casing Leaks:  Yes  No Depth of casing leak(s): \_\_\_\_\_  
(depth) (depth)  
 Type Completion:  ALT. I  ALT. II Depth of:  DV Tool: \_\_\_\_\_ w / \_\_\_\_\_ sacks of cement  Port Collar: \_\_\_\_\_ w / \_\_\_\_\_ sack of cement  
(depth) (depth)  
 Packer Type: \_\_\_\_\_ Size: \_\_\_\_\_ Inch Set at: \_\_\_\_\_ Feet  
 Total Depth: \_\_\_\_\_ Plug Back Depth: \_\_\_\_\_ Plug Back Method: \_\_\_\_\_

**Geological Data:**

Formation Name	Formation Top	Formation Base	Completion Information
1. _____	At: _____	to _____ Feet	Perforation Interval _____ to _____ Feet or Open Hole Interval _____ to _____ Feet
2. _____	At: _____	to _____ Feet	Perforation Interval _____ to _____ Feet or Open Hole Interval _____ to _____ Feet

~~UNDER PENALTY OF PERJURY I HEREBY ATTEST THAT THE INFORMATION CONTAINED HEREIN IS TRUE AND CORRECT TO THE BEST OF MY KNOWLEDGE~~

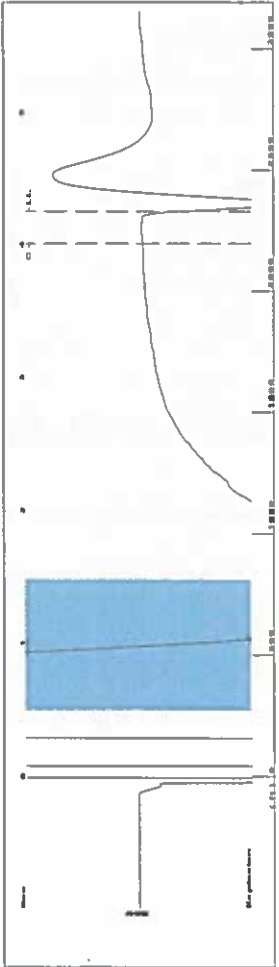
**Submitted Electronically**

<b>Do NOT Write in This Space - KCC USE ONLY</b>	Date Tested: _____	Results: _____	Date Plugged: _____	Date Repaired: _____	Date Put Back in Service: _____
	Review Completed by: _____ Comments: _____				
TA Approved: <input type="checkbox"/> Yes <input type="checkbox"/> Denied Date: _____					

**Mail to the Appropriate KCC Conservation Office:**

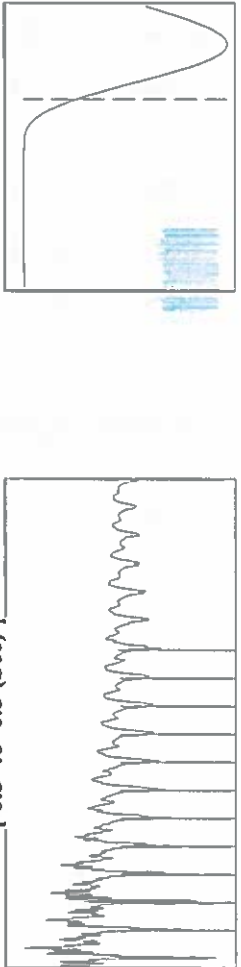
	KCC District Office #1 - 210 E. Frontview, Suite A, Dodge City, KS 67801	Phone 620.682.7933
	KCC District Office #2 - 3450 N. Rock Road, Building 600, Suite 601, Wichita, KS 67226	Phone 316.337.7400
	KCC District Office #3 - 137 E. 21st St., Chanute, KS 66720	Phone 620.902.6450
	KCC District Office #4 - 2301 E. 13th Street, Hays, KS 67601-2651	Phone 785.261.6250

Group: SUBLETTE Well: Wyatt Trust 9-N (acquired on: 03/21/20 09:43:12)

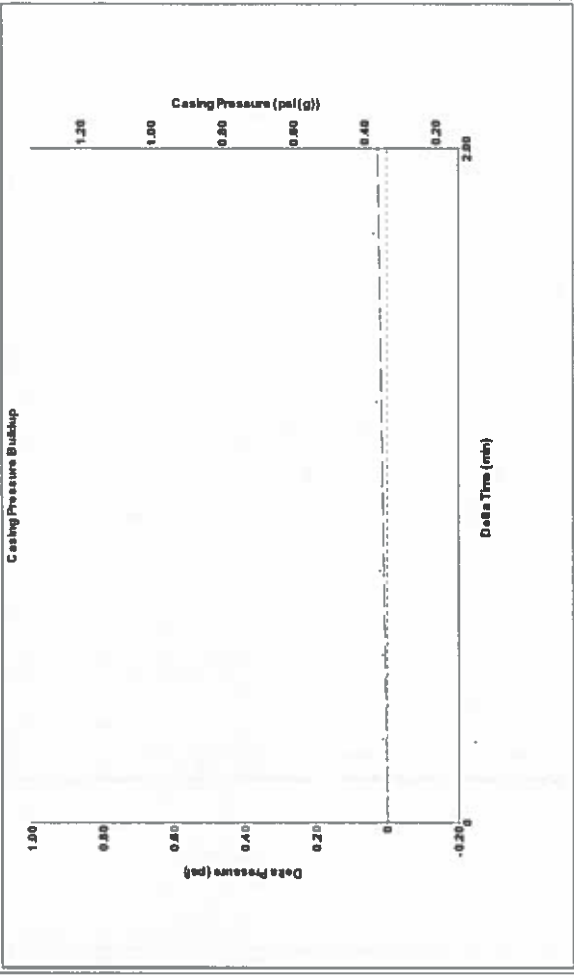


Filter Type High Pass Automatic Collar Count Yes Time 4.259 sec  
 Manual Acoustic Velocity 104.53 ft/s Manual JTS/sec 17.4216 Joints 73.47 Jts  
 Depth 2329.00 ft

1.05 to 1.5 (Sec)



Group: SUBLETTE Well: Wyatt Trust 9-N (acquired on: 03/21/20 09:43:12)



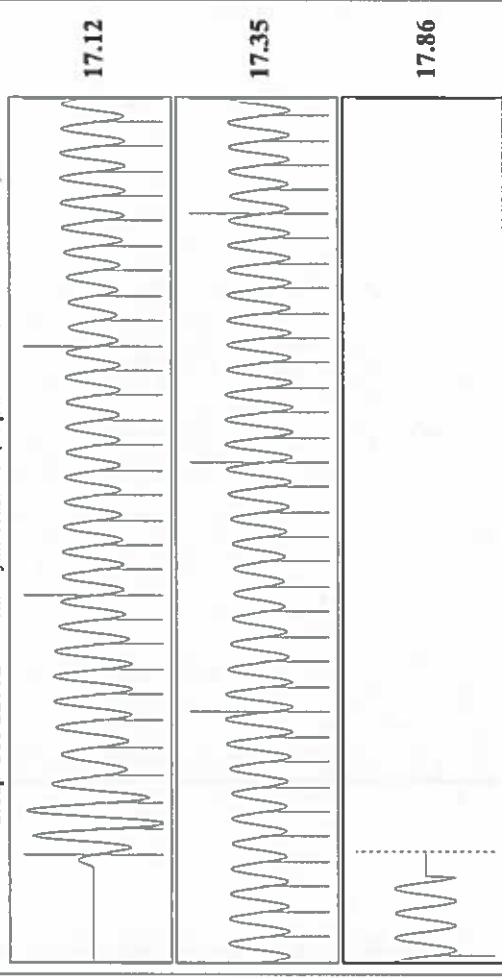
Change in Pressure 0.03 psi PT16716 Range  
 Change in Time 2.00 min

Analysis Method: Automatic

Group: SUBLETTE Well: Wyatt Trust 9-N (acquired on: 03/21/20 09:43:12)

Production Current	Potential	Casing Pressure	Producing
Oil - * -	- * - BBL/D	0.3 psi (g)	Annular
Water - * -	- * - BBL/D	Casing Pressure Buildup	Gas Flow
Gas - * -	- * - Mscf/D	0.0 psi	% Liquid
IPR Method	Vogel	Gas/Liquid Interface Pressure	100 %
PBHP/SBHP	- * -	2.00 min	
Production Efficiency	0.0	1.4 psi (g)	
Oil 40 deg-API		Liquid Level Depth	
Water 1.05 Sp.Gr.H2O		2329.00 ft	
Gas 0.89 Sp.Gr.AIR		Pump Intake Depth	
Acoustic Velocity 1093.68 ft/s		4143.00 ft	
		Formation Depth	
		4151.00 ft	
Formation Submergence			
Total Gaseous Liquid Column IIT (TVD)	1814 ft		
Equivalent Gas Free Liquid IIT (TVD)	1814 ft		
3/21/2020			

Group: SUBLETTE Well: Wyatt Trust 9-N (acquired on: 03/21/20 09:43:12)



Acoustic Velocity 1093.68 ft/s Joints counted 65  
 Joints Per Second 17.2505 Jts/sec 73.47  
 Depth to liquid level 2329 ft Filter Width 19.4216  
 Automatic Collar Count Yes Time to 1st Collar 4.016

April 07, 2020

Katherine McClurkan  
Merit Energy Company, LLC  
13727 Noel Road, Suite1200  
Dallas, TX 75240

Re: Temporary Abandonment  
API 15-081-21635-00-01  
Wyatt Trust 9-N16-30-33  
SW/4 Sec.16-30S-33W  
Haskell County, Kansas

Dear Katherine McClurkan:

"Your temporary abandonment (TA) application for the well listed above has been approved. In accordance with K.A.R. 82-3-111 the TA status of this well will expire 04/07/2021.

- \* If you return this well to service or plug it, please notify the District Office.
- \* If you sell this well you are required to file a Transfer of Operator form, T-1.
- \* If the well will remain temporarily abandoned, you must submit a new TA application, CP-111, before 04/07/2021.

You may contact me at the number above if you have questions.

Very truly yours,

Michael Maier"