

KANSAS CORPORATION COMMISSION
OIL & GAS CONSERVATION DIVISION

TEMPORARY ABANDONMENT WELL APPLICATION

OPERATOR: License#
Name:
Address 1:
Address 2:
City: State: Zip:
Contact Person:
Phone:
Contact Person Email:
Field Contact Person:
Field Contact Person Phone:

API No. 15-
Spot Description:
Sec. Twp. S. R.
GPS Location: Lat: Long:
Datum: NAD27 NAD83 WGS84
County: Elevation:
Lease Name: Well #:
Well Type: Oil Gas OG WSW Other:
SWD Permit #: ENHR Permit #:
Gas Storage Permit #:
Spud Date: Date Shut-In:

Table with 7 columns: Conductor, Surface, Production, Intermediate, Liner, Tubing. Rows include Size, Setting Depth, Amount of Cement, Top of Cement, Bottom of Cement.

Casing Fluid Level from Surface: How Determined? Date:
Casing Squeeze(s): to w / sacks of cement, to w / sacks of cement. Date:
Do you have a valid Oil & Gas Lease? Yes No
Depth and Type: Junk in Hole at Tools in Hole at Casing Leaks: Yes No Depth of casing leak(s):
Type Completion: ALT. I ALT. II Depth of: DV Tool: w / sacks of cement Port Collar: w / sack of cement
Packer Type: Size: Inch Set at: Feet
Total Depth: Plug Back Depth: Plug Back Method:

Geological Data:

Table with 4 columns: Formation Name, Formation Top, Formation Base, Completion Information. Rows 1 and 2.

UNDER PENALTY OF PERJURY I HEREBY ATTEST THAT THE INFORMATION CONTAINED HEREIN IS TRUE AND CORRECT TO THE BEST OF MY KNOWLEDGE

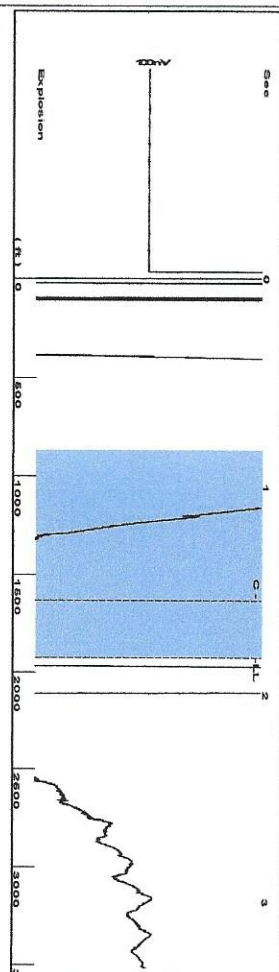
Submitted Electronically

Do NOT Write in This Space - KCC USE ONLY
Date Tested: Results: Date Plugged: Date Repaired: Date Put Back in Service:
Review Completed by: Comments:
TA Approved: Yes Denied Date:

Mail to the Appropriate KCC Conservation Office:

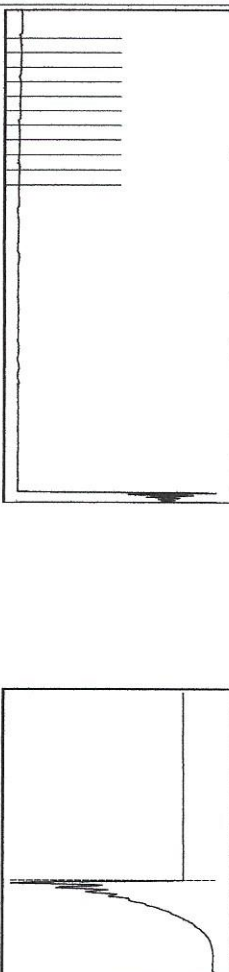
Table with 3 columns: District Office, Address, Phone. Rows for District Office #1, #2, #3, #4.

Group: Coldwater Well: Schumacher 2-13 (acquired on: 03/25/20 08:58:02 )



Filter Type High Pass Automatic Collar Count Yes  
 Manual Acoustic Velocity 2100 f/s Manual JTS/sec 33.3333  
 Time 1.817 sec  
 Joints 61.0455 f/s  
 Depth 1922.93 ft

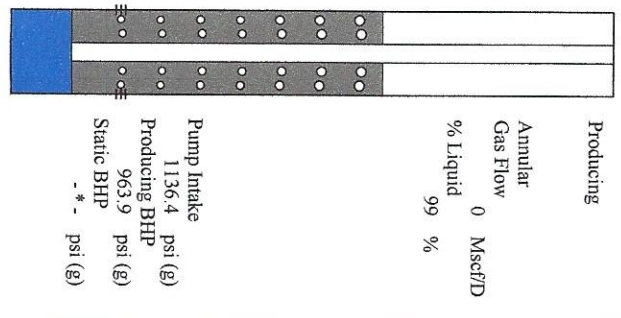
[ 0.8 to 1.8 (Sec) ]



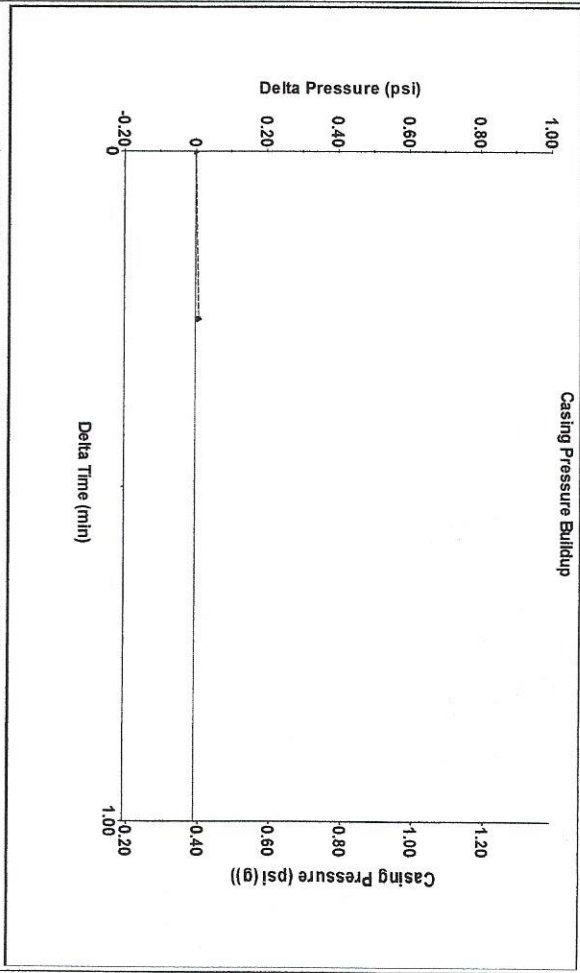
Analysis Method: Automatic

Group: Coldwater Well: Schumacher 2-13 (acquired on: 03/25/20 08:58:02 )

Production	Potential	Casing Pressure	Producing
Current	-*- BBL/D	0.4 psi (g)	Annular
Oil	-*- BBL/D	Casing Pressure Buildup	Gas Flow
Water	-*- MscFD	0.0 psi	0 MscFD
Gas	-*- MscFD	0.25 min	% Liquid
IPR Method	Vogel	Gas/Liquid Interface Pressure	99 %
PBHP/SBHP	-*-	0.9 psi (g)	
Production Efficiency	0.0	Liquid Level Depth	
Oil	40 deg/API	1922.93 ft	
Water	1.05 Sp.Gr.H2O	Pump Intake Depth	
Gas	0.55 Sp.Gr.AIR	5425.00 ft	
Acoustic Velocity	2116.6 f/s	Formation Depth	
		4870.00 ft	
Formation Submergence			
Total Gaseous Liquid Column HT (TVD)			
Equivalent Gas Free Liquid HT (TVD)			
Acoustic Test			

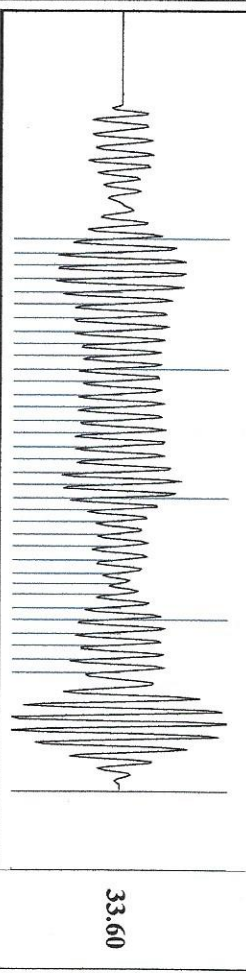


Group: Coldwater Well: Schumacher 2-13 (acquired on: 03/25/20 08:58:02 )



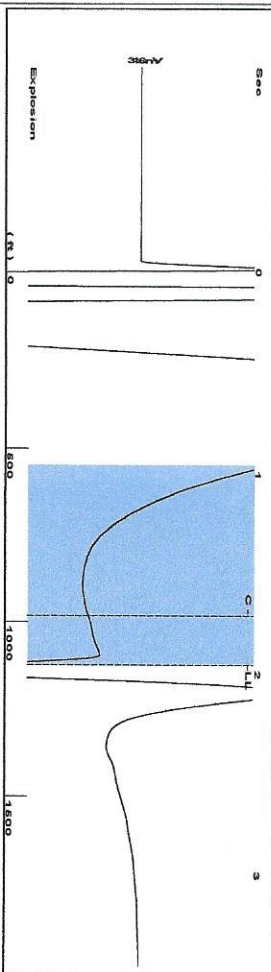
Change in Pressure 0.01 psi PT13440  
 Change in Time 0.25 min Range

Group: Coldwater Well: Schumacher 2-13 (acquired on: 03/25/20 08:58:02 )



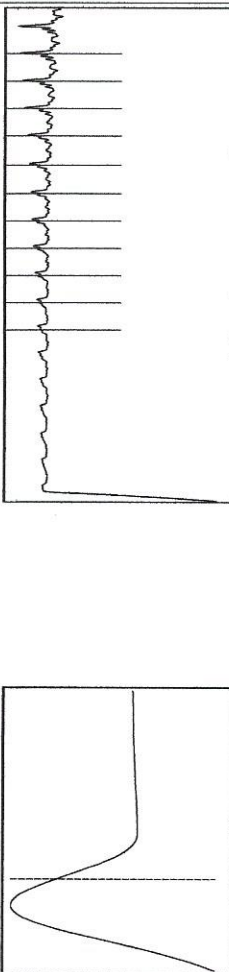
Acoustic Velocity 2116.6 f/s Joints counted 34  
 Joints Per Second 33.5968 f/s/sec Joints to liquid level 61.0455  
 Depth to liquid level 1922.93 ft Filter Width 31.3333  
 Automatic Collar Count Yes Time to 1st Collar 0.528

Group: Coldwater Well: Petty A 1-36 (acquired on: 03/25/20 10:00:22)



Filter Type High Pass Automatic Collar Count Yes  
 Manual Acoustic Velocity 162.01 f/s Manual JTS/sec 17.9211  
 Time 1.955 sec  
 Joints 34.7124 Jts  
 Depth 1125.37 ft

1.0 to 2.0 (Sec) |

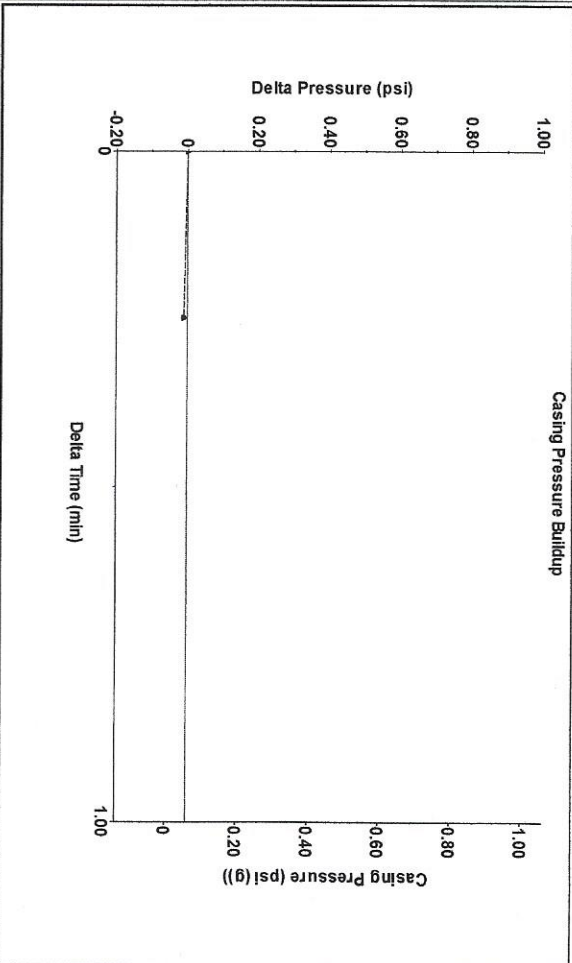


Analysis Method: Automatic

Group: Coldwater Well: Petty A 1-36 (acquired on: 03/25/20 10:00:22)

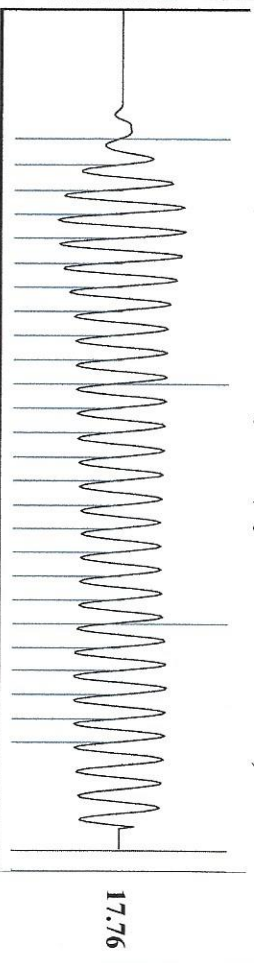
Production Current	Potential	Casing Pressure	Producing
Oil -*- BBL/D	-*- BBL/D	0.1 psi (g)	Annular Gas Flow
Water -*- BBL/D	-*- BBL/D	-0.0 psi	0 Mscf/D
Gas -*- Mscf/D	-*- Mscf/D	0.25 min	% Liquid
IPR Method	Vogel	Gas/Liquid Interface Pressure	100 %
PBHP/SBHP	-*-	0.5 psi (g)	
Production Efficiency	0.0		
Oil 40 deg API		Liquid Level Depth	Pump Intake
Water 1.05 Sp Gr H2O		1125.37 ft	-*- psi (g)
Gas 0.82 Sp Gr AIR		Pump Intake Depth	Producing BHP
Acoustic Velocity	1151.28 f/s	Formation Depth	2333.2 psi (g)
		6256.00 ft	Static BHP
			-*- psi (g)

Group: Coldwater Well: Petty A 1-36 (acquired on: 03/25/20 10:00:22)



Change in Pressure -0.01 psi PT13440  
 Change in Time 0.25 min Range 0 - ? psi

Group: Coldwater Well: Petty A 1-36 (acquired on: 03/25/20 10:00:22)



Acoustic Velocity 1151.28 f/s Joints counted 25  
 Joints Per Second 17.7557 jts/sec Joints to liquid level 19.9211  
 Depth to liquid level 1125.37 ft Filter Width 15.9211  
 Automatic Collar Count Yes Time to 1st Collar 1.704

April 07, 2020

Loveness Mpanje  
F. G. Holl Company L.L.C.  
9431 E CENTRAL STE 100  
WICHITA, KS 67206-2563

Re: Temporary Abandonment  
API 15-025-21470-00-00  
SCHUMACHER 2-13  
SE/4 Sec.13-34S-21W  
Clark County, Kansas

Dear Loveness Mpanje:

Your application for Temporary Abandonment (TA) for the above-listed well is denied for the following reasons(s):

**Shut-in Over 10 years**

Pursuant to K.A.R. 82-3-111, the well must be plugged or returned to service by 05/07/2020.

If you wish to instead file an application for an exception to the 10-year limitation of K.A.R. 82-3-111, demonstrating why it is necessary to TA the well for more than 10 years, then you must file the application for an exception by 05/07/2020.

**This deadline does NOT override any compliance deadline given to you in any Commission Order.**

You may contact me if you have any questions.

Sincerely,  
Michael Maier  
KCC DISTRICT 1