

KANSAS CORPORATION COMMISSION
OIL & GAS CONSERVATION DIVISION

TEMPORARY ABANDONMENT WELL APPLICATION

OPERATOR: License#
Name:
Address 1:
Address 2:
City: State: Zip:
Contact Person:
Phone:
Contact Person Email:
Field Contact Person:
Field Contact Person Phone:

API No. 15-
Spot Description:
Sec. Twp. S. R.
GPS Location: Lat: Long:
Datum: NAD27 NAD83 WGS84
County: Elevation:
Lease Name: Well #:
Well Type: Oil Gas OG WSW Other:
SWD Permit #: ENHR Permit #:
Gas Storage Permit #:
Spud Date: Date Shut-In:

Table with 7 columns: Conductor, Surface, Production, Intermediate, Liner, Tubing. Rows include Size, Setting Depth, Amount of Cement, Top of Cement, Bottom of Cement.

Casing Fluid Level from Surface: How Determined? Date:
Casing Squeeze(s): to w / sacks of cement, to w / sacks of cement. Date:
Do you have a valid Oil & Gas Lease? Yes No
Depth and Type: Junk in Hole at Tools in Hole at Casing Leaks: Yes No Depth of casing leak(s):
Type Completion: ALT. I ALT. II Depth of: DV Tool: w / sacks of cement Port Collar: w / sack of cement
Packer Type: Size: Inch Set at: Feet
Total Depth: Plug Back Depth: Plug Back Method:

Geological Date:

Table with 4 columns: Formation Name, Formation Top, Formation Base, Completion Information. Rows 1 and 2.

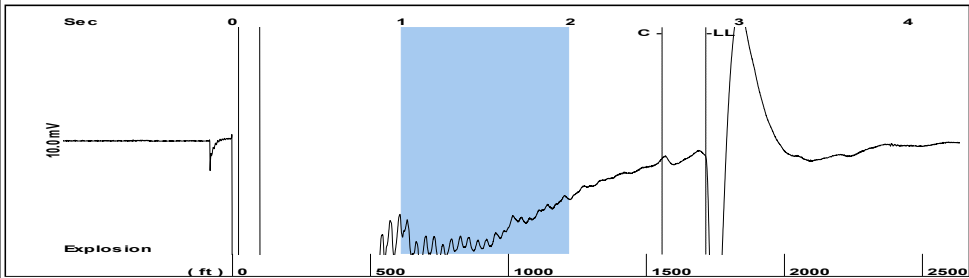
UNDER PENALTY OF PERJURY I HEREBY ATTEST THAT THE INFORMATION CONTAINED HEREIN IS TRUE AND CORRECT TO THE BEST OF MY KNOWLEDGE

Submitted Electronically

Do NOT Write in This Space - KCC USE ONLY
Date Tested: Results: Date Plugged: Date Repaired: Date Put Back in Service:
Review Completed by: Comments:
TA Approved: Yes Denied Date:

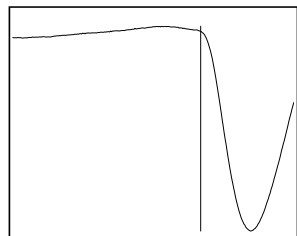
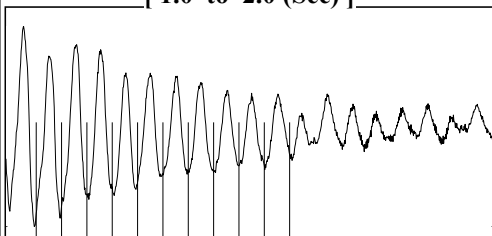
Mail to the Appropriate KCC Conservation Office:

Table with 3 columns: District Office #, Address, Phone. Rows 1-4.

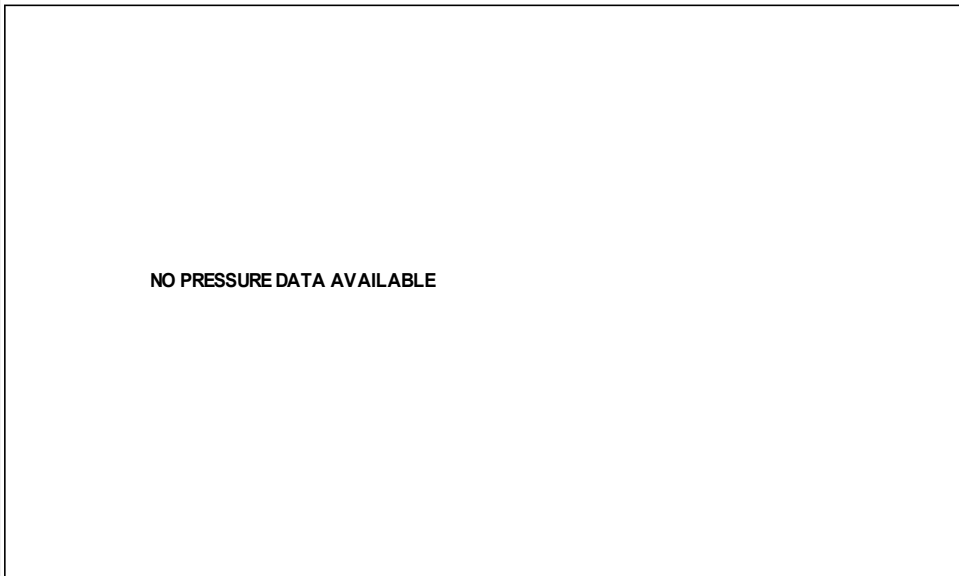


Filter Type High Pass Automatic Collar Count Yes Time 2.803 sec
 Manual Acoustic Velo 1219.23 ft/s Manual JTS/sec 19.2308 Joints 54.093 Jts
 Depth 1714.75 ft

[1.0 to 2.0 (Sec)]

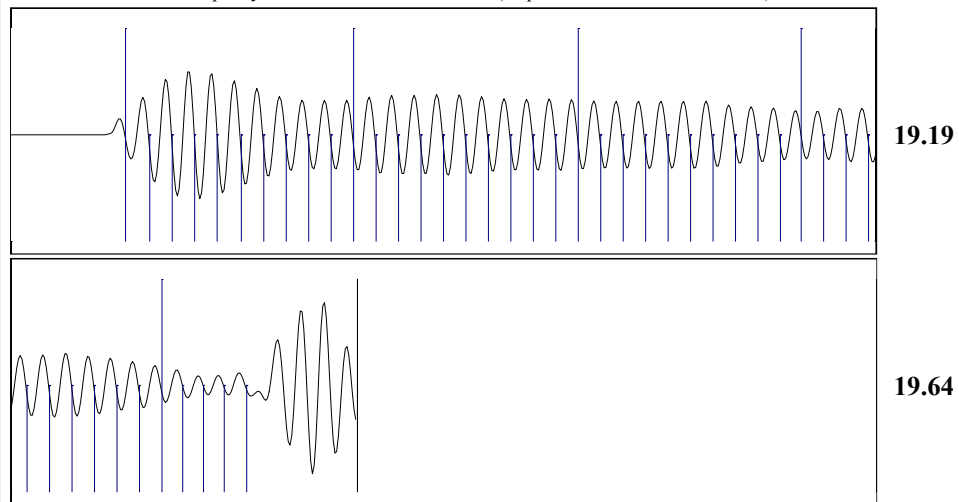


Analysis Method: Automatic



Change in Pressure -0.08 psi NONE
 Range 0 - ? psi
 Change in Time 2.00 min

<p>Production</p> <p>Current Potential</p> <p>Oil - * - BBL/D</p> <p>Water - * - BBL/D</p> <p>Gas - * - Mscf/D</p> <p>IPR Method Vogel</p> <p>PBHP/SBHP - * -</p> <p>Production Efficiency 0.0</p> <p>Oil 40 deg.API</p> <p>Water 1.05 Sp.Gr.H2O</p> <p>Gas 0.75 Sp.Gr.AIR</p> <p>Acoustic Velocity 1223.51 ft/s</p> <p>Formation Submergence</p> <p>Total Gaseous Liquid Column HT (TVD) 4210 ft</p> <p>Equivalent Gas Free Liquid HT (TVD) 4210 ft</p> <p>Acoustic Test</p>	<p>Casing Pressure 20.4 psi (g)</p> <p>Casing Pressure Buildup -0.083 psi</p> <p>2.00 min</p> <p>Gas/Liquid Interface Pressure 22.0 psi (g)</p> <p>Liquid Level Depth 1714.75 ft</p> <p>Pump Intake Depth 5925.00 ft</p> <p>Formation Depth 5925.00 ft</p> <p>Pump Intake 1380.2 psi (g)</p> <p>Producing BHP 1380.2 psi (g)</p> <p>Static BHP - * - psi (g)</p>	<p>Producing</p> <p>Annular Gas Flow 0 Mscf/D</p> <p>% Liquid 100 %</p>
--	--	---



Acoustic Velocity 1223.51 ft/s Joints counted 44
 Joints Per Second 19.2982 jts/sec Joints to liquid level 54.093
 Depth to liquid level 1714.75 ft Filter Width 17.2308 21.2308
 Automatic Collar Count Yes Time to 1st Collar 0.264 2.544

April 09, 2020

Melody C. Fletcher
Oil Producers, Inc. of Kansas
1710 WATERFRONT PKWY
WICHITA, KS 67206-6603

Re: Temporary Abandonment
API 15-175-20248-00-00
GANO #1-2
NE/4 Sec.02-33S-31W
Seward County, Kansas

Dear Melody C. Fletcher:

"Your temporary abandonment (TA) application for the well listed above has been approved. In accordance with K.A.R. 82-3-111 the TA status of this well will expire 04/09/2021.

- * If you return this well to service or plug it, please notify the District Office.
- * If you sell this well you are required to file a Transfer of Operator form, T-1.
- * If the well will remain temporarily abandoned, you must submit a new TA application, CP-111, before 04/09/2021.

You may contact me at the number above if you have questions.

Very truly yours,

Scott Alberg"