

KANSAS CORPORATION COMMISSION
OIL & GAS CONSERVATION DIVISION

TEMPORARY ABANDONMENT WELL APPLICATION

OPERATOR: License#
Name:
Address 1:
Address 2:
City: State: Zip:
Contact Person:
Phone:
Contact Person Email:
Field Contact Person:
Field Contact Person Phone:

API No. 15-
Spot Description:
Sec. Twp. S. R.
GPS Location: Lat, Long
Datum: NAD27, NAD83, WGS84
County: Elevation:
Lease Name: Well #:
Well Type: Oil, Gas, OG, WSW, Other
SWD Permit #: ENHR Permit #:
Gas Storage Permit #:
Spud Date: Date Shut-In:

Table with 7 columns: Conductor, Surface, Production, Intermediate, Liner, Tubing. Rows include Size, Setting Depth, Amount of Cement, Top of Cement, Bottom of Cement.

Casing Fluid Level from Surface: How Determined? Date:
Casing Squeeze(s): to w / sacks of cement, to w / sacks of cement. Date:
Do you have a valid Oil & Gas Lease? Yes No
Depth and Type: Junk in Hole at Tools in Hole at Casing Leaks: Yes No Depth of casing leak(s):
Type Completion: ALT. I ALT. II Depth of: DV Tool: w / sacks of cement Port Collar: w / sack of cement
Packer Type: Size: Inch Set at: Feet
Total Depth: Plug Back Depth: Plug Back Method:

Geological Date:

Table with 4 columns: Formation Name, Formation Top, Formation Base, Completion Information. Rows 1 and 2.

UNDER PENALTY OF PERJURY I HEREBY ATTEST THAT THE INFORMATION CONTAINED HEREIN IS TRUE AND CORRECT TO THE BEST OF MY KNOWLEDGE

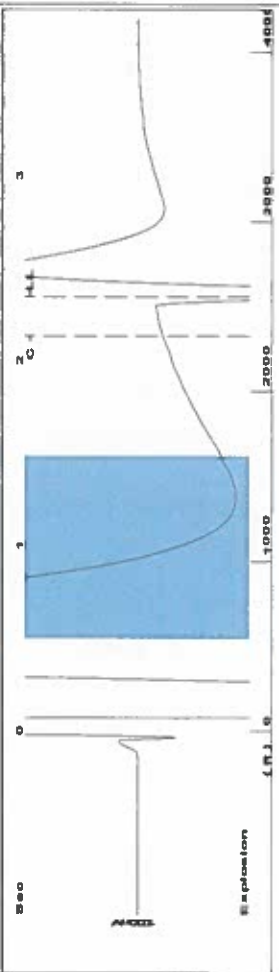
Submitted Electronically

Do NOT Write in This Space - KCC USE ONLY
Date Tested: Results: Date Plugged: Date Repaired: Date Put Back in Service:
Review Completed by: Comments:
TA Approved: Yes Denied Date:

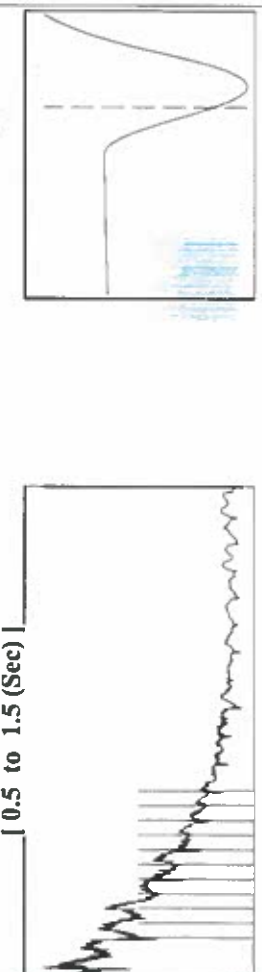
Mail to the Appropriate KCC Conservation Office:

Table with 3 columns: District Office #, Address, Phone. Rows 1-4.

Group: SUBLETTE Well: Diaden Farms 3-K (acquired on: 04/06/20 09:22:26)



Filter Type High Pass Automatic Collar Count Yes  
 Manual Acoustic Velo 2113.33 ft/s Manual JTS/sec 33.3333  
 Time 2.35 sec  
 Joints 80.6867 Jts  
 Depth 2557.77 ft

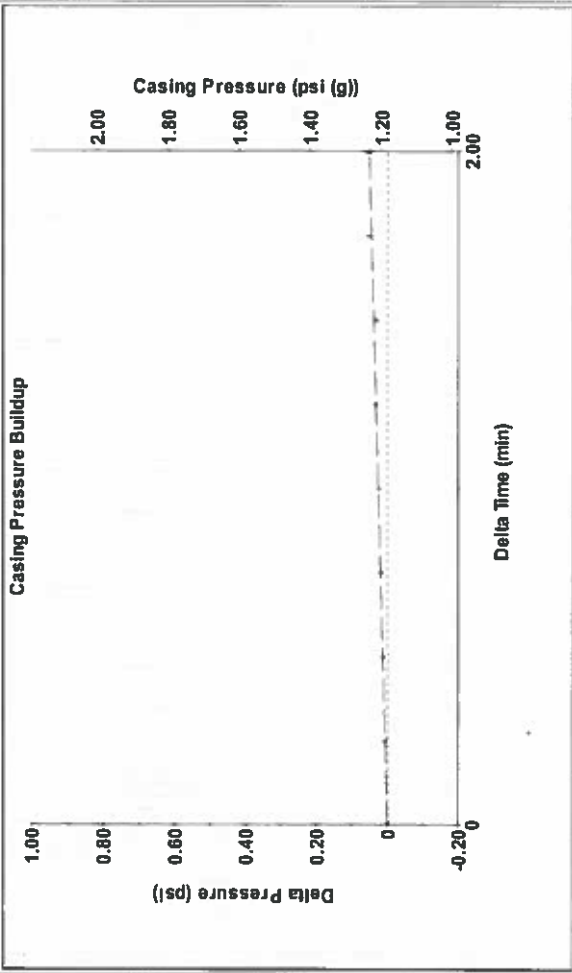


Analysis Method: Automatic

Group: SUBLETTE Well: Diaden Farms 3-K (acquired on: 04/06/20 09:22:26)

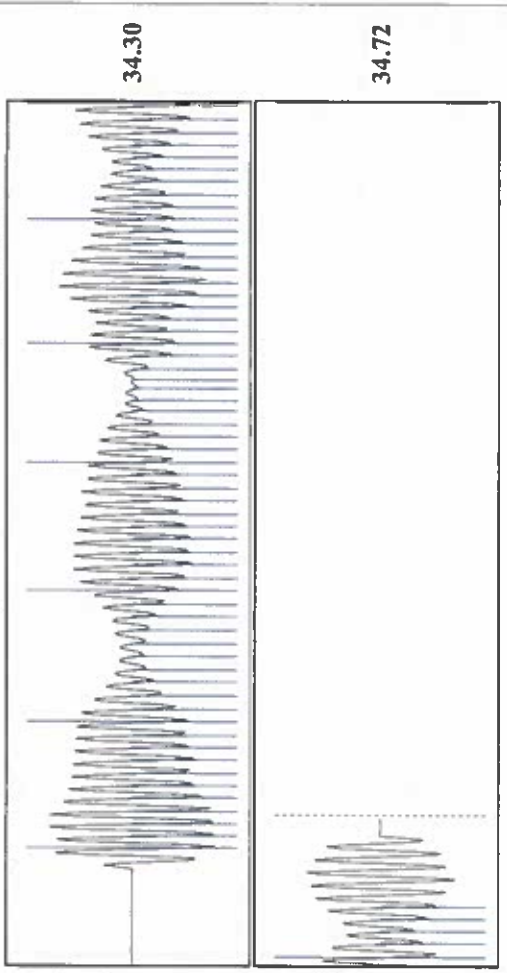
Production	Potential	Casing Pressure	Producing
Oil	BBLD	1.2 psi (g)	Annular
Water	BBLD	Casing Pressure Buildup	Gas Flow
Gas	Mscf/D	0.1 psi	% Liquid
IPR Method	Vogel	2.00 min	99 %
PBHP/SBHP	0.0	Gas/Liquid Interface Pressure	
Production Efficiency		2.0 psi (g)	
Oil 40 deg API		Liquid Level Depth	
Water 1.05 Sp.Gr.H2O		2557.77 ft	
Gas 0.55 Sp.Gr.AIR		Pump Intake Depth	
Acoustic Velocity	2176.82 ft/s	5402.00 ft	
		Formation Depth	
		5380.00 ft	
Formation Submergence			
Total Gaseous Liquid Column HIT (TVD)	2844 ft		
Equivalent Gas Free Liquid HIT (TVD)	2822 ft		
4/6/2020			

Group: SUBLETTE Well: Diaden Farms 3-K (acquired on: 04/06/20 09:22:26)



Change in Pressure 0.05 psi  
 Change in Time 2.00 min  
 PT16716 Range  
 0 - ? psi

Group: SUBLETTE Well: Diaden Farms 3-K (acquired on: 04/06/20 09:22:26)



Acoustic Velocity 2176.82 ft/s Joints counted 64  
 Joints Per Second 34.3348 Joints to liquid level 80.6867  
 Depth to liquid level 2557.77 ft Filter Width 31.3333  
 Automatic Collar Count Yes Time to 1st Collar 0.272 2.136

April 10, 2020

Katherine McClurkan  
Merit Energy Company, LLC  
13727 Noel Road, Suite 1200  
Dallas, TX 75240

Re: Temporary Abandonment  
API 15-081-21640-00-01  
Diaden Farms 3-K15-30-32  
SW/4 Sec.15-30S-32W  
Haskell County, Kansas

Dear Katherine McClurkan:

"Your temporary abandonment (TA) application for the well listed above has been approved. In accordance with K.A.R. 82-3-111 the TA status of this well will expire 04/10/2021.

- \* If you return this well to service or plug it, please notify the District Office.
- \* If you sell this well you are required to file a Transfer of Operator form, T-1.
- \* If the well will remain temporarily abandoned, you must submit a new TA application, CP-111, before 04/10/2021.

You may contact me at the number above if you have questions.

Very truly yours,

Michael Maier"