

KANSAS CORPORATION COMMISSION
OIL & GAS CONSERVATION DIVISION

Form must be Typed
Form must be signed

TEMPORARY ABANDONMENT WELL APPLICATION

All blanks must be complete

OPERATOR: License#
Name:
Address 1:
Address 2:
City: State: Zip:
Contact Person:
Phone:
Contact Person Email:
Field Contact Person:
Field Contact Person Phone:

API No. 15-
Spot Description:
Sec. Twp. S. R.
feet from N / S Line of Section
feet from E / W Line of Section
GPS Location: Lat: , Long:
Datum: NAD27 NAD83 WGS84
County: Elevation: GL KB
Lease Name: Well #:
Well Type: Oil Gas OG WSW Other:
SWD Permit #: ENHR Permit #:
Gas Storage Permit #:
Spud Date: Date Shut-In:

Table with 7 columns: Conductor, Surface, Production, Intermediate, Liner, Tubing. Rows include Size, Setting Depth, Amount of Cement, Top of Cement, Bottom of Cement.

Casing Fluid Level from Surface: How Determined? Date:
Casing Squeeze(s): to w / sacks of cement, to w / sacks of cement. Date:
Do you have a valid Oil & Gas Lease? Yes No
Depth and Type: Junk in Hole at Tools in Hole at Casing Leaks: Yes No Depth of casing leak(s):
Type Completion: ALT. I ALT. II Depth of: DV Tool: w / sacks of cement Port Collar: w / sack of cement
Packer Type: Size: Inch Set at: Feet
Total Depth: Plug Back Depth: Plug Back Method:

Geological Data:

Table with 4 columns: Formation Name, Formation Top, Formation Base, Completion Information. Rows 1 and 2.

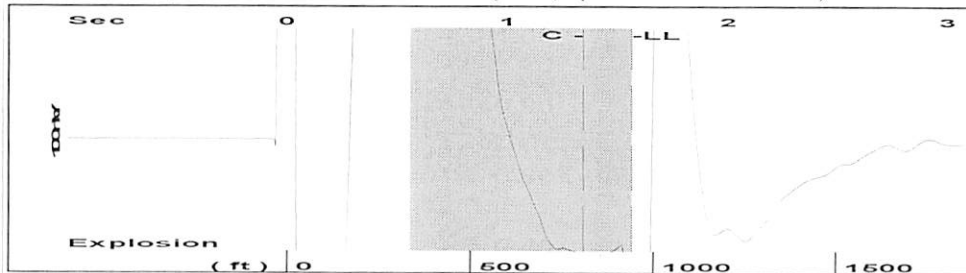
UNDER PENALTY OF PERJURY I HEREBY ATTEST THAT THE INFORMATION CONTAINED HEREIN IS TRUE AND CORRECT TO THE BEST OF MY KNOWLEDGE

Submitted Electronically

Do NOT Write in This Space - KCC USE ONLY
Date Tested: Results: Date Plugged: Date Repaired: Date Put Back in Service:
Review Completed by: Comments:
TA Approved: Yes Denied Date:

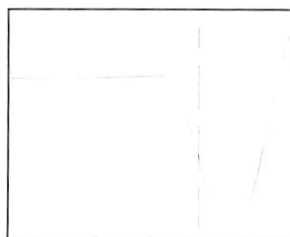
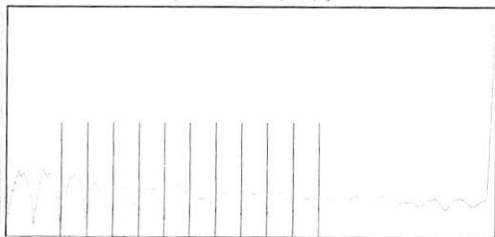
Mail to the Appropriate KCC Conservation Office:

Table with 3 columns: District Office #, Address, Phone. Rows 1-4.

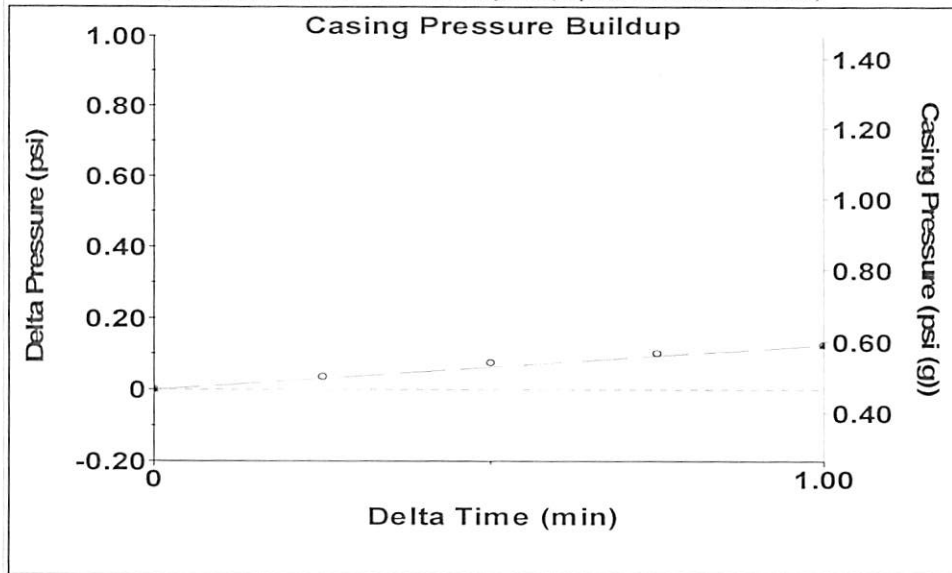


Filter Type High Pass Automatic Collar Count Yes Time 1.563 sec
 Manual Acoustic Velo 1198.49 ft/s Manual JIS/sec 18.9036 Joints 29.7148 Jts
 Depth 941.96 ft

[0.6 to 1.6 (Sec)]



Analysis Method: Automatic



Change in Pressure 0.13 psi PT15469
 Change in Time 1.00 min Range 0 - ? psi

Production Current Potential
 Oil -*- -*- BBL/D
 Water -*- -*- BBL/D
 Gas -*- -*- Mscl/D

IPR Method Vogel
 PBHP/SBHP -*-
 Production Efficiency 0.0

Oil 40 deg.API
 Water 1.05 Sp.Gr.H2O
 Gas 0.77 Sp.Gr.AIR

Acoustic Velocity 1205.32 ft/s

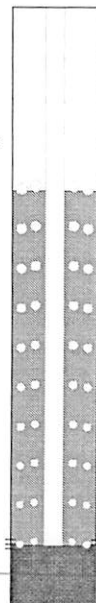
Casing Pressure 0.5 psi (g)
 Casing Pressure Buildup 0.1 psi
 1.00 min
 Gas/Liquid Interface Pressure 0.9 psi (g)

Liquid Level Depth 941.96 ft

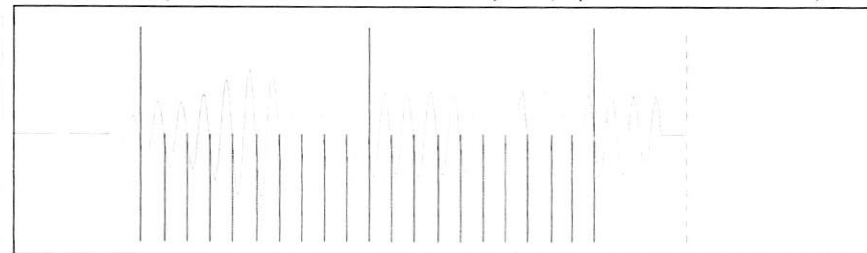
Tubing Intake Depth 3636.00 ft
 Formation Depth 3626.00 ft

Formation Submergence
 Total Gaseous Liquid Column HT (TVD) 2694 ft
 Equivalent Gas Free Liquid HT (TVD) 2562 ft

Acoustic Test



Producing
 Casing % Liquid 95 %
 Tubing Intake 853.4 psi (g)
 Producing BHP 848.9 psi (g)
 Static BHP - * - psi (g)



19.01

Acoustic Velocity 1205.32 ft/s Joints counted 20
 Joints Per Second 19.0114 jts/sec Joints to liquid level 29.7148
 Depth to liquid level 941.96 ft Filter Width 16.9036 20.9036
 Automatic Collar Count Yes Time to 1st Collar 0.292 1.344

April 14, 2020

Kenneth C Gates
3G Production, LLC
10387 NE SR 61
PO BOX 847
PRATT, KS 67124-0847

Re: Temporary Abandonment
API 15-047-20715-00-00
MEYER BERNARD A 2
SE/4 Sec.23-24S-16W
Edwards County, Kansas

Dear Kenneth C Gates:

"Your temporary abandonment (TA) application for the well listed above has been approved. In accordance with K.A.R. 82-3-111 the TA status of this well will expire 04/14/2021.

- * If you return this well to service or plug it, please notify the District Office.
- * If you sell this well you are required to file a Transfer of Operator form, T-1.
- * If the well will remain temporarily abandoned, you must submit a new TA application, CP-111, before 04/14/2021.

You may contact me at the number above if you have questions.

Very truly yours,

Michael Maier"