

KANSAS CORPORATION COMMISSION
OIL & GAS CONSERVATION DIVISION

TEMPORARY ABANDONMENT WELL APPLICATION

OPERATOR: License#
Name:
Address 1:
Address 2:
City: State: Zip:
Contact Person:
Phone:
Contact Person Email:
Field Contact Person:
Field Contact Person Phone:

API No. 15-
Spot Description:
Sec. Twp. S. R.
GPS Location: Lat: Long:
Datum: NAD27 NAD83 WGS84
County: Elevation:
Lease Name: Well #:
Well Type: Oil Gas OG WSW Other:
SWD Permit #: ENHR Permit #:
Gas Storage Permit #:
Spud Date: Date Shut-In:

Table with 7 columns: Conductor, Surface, Production, Intermediate, Liner, Tubing. Rows include Size, Setting Depth, Amount of Cement, Top of Cement, Bottom of Cement.

Casing Fluid Level from Surface: How Determined? Date:
Casing Squeeze(s): to w / sacks of cement, to w / sacks of cement. Date:
Do you have a valid Oil & Gas Lease? Yes No
Depth and Type: Junk in Hole at Tools in Hole at Casing Leaks: Yes No Depth of casing leak(s):
Type Completion: ALT. I ALT. II Depth of: DV Tool: w / sacks of cement Port Collar: w / sack of cement
Packer Type: Size: Inch Set at: Feet
Total Depth: Plug Back Depth: Plug Back Method:

Geological Data:

Table with 4 columns: Formation Name, Formation Top, Formation Base, Completion Information. Rows 1 and 2.

UNDER PENALTY OF PERJURY I HEREBY ATTEST THAT THE INFORMATION CONTAINED HEREIN IS TRUE AND CORRECT TO THE BEST OF MY KNOWLEDGE

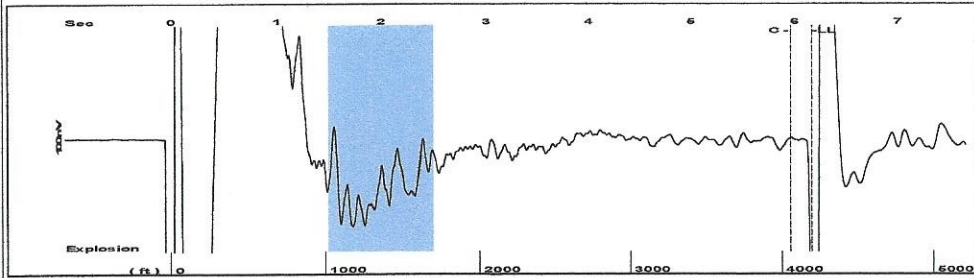
Submitted Electronically

Do NOT Write in This Space - KCC USE ONLY
Date Tested: Results: Date Plugged: Date Repaired: Date Put Back in Service:
Review Completed by: Comments:
TA Approved: Yes Denied Date:

Mail to the Appropriate KCC Conservation Office:

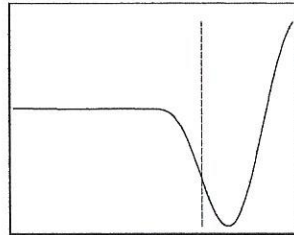
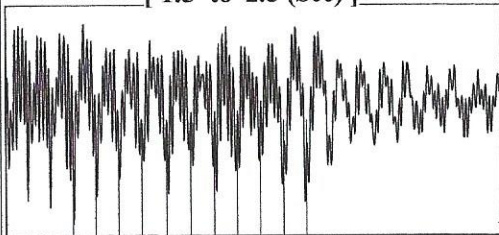
Table with 2 columns: Office Address, Phone. Rows for KCC District Office #1, #2, #3, #4.

Group: Belpre Well: Breitenbach M 1-19 (acquired on: 04/08/20 12:35:15 )



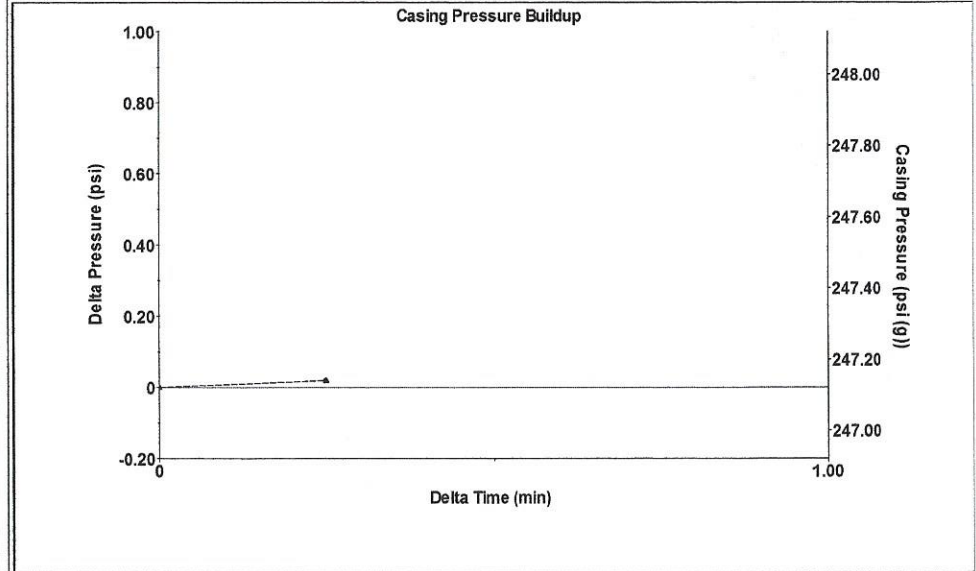
Filter Type High Pass Automatic Collar Count Yes Time 6.161 sec  
 Manual Acoustic Velo 1348.94 ft/s Manual JTS/sec 21.2766 Joints 132.238 Jts  
 Depth 4191.95 ft

[ 1.5 to 2.5 (Sec) ]



Analysis Method: Automatic

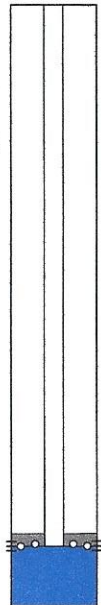
Group: Belpre Well: Breitenbach M 1-19 (acquired on: 04/08/20 12:35:15 )



Change in Pressure 0.02 psi PT13440  
 Change in Time 0.25 min Range 0 - ? psi

Group: Belpre Well: Breitenbach M 1-19 (acquired on: 04/08/20 12:35:15 )

Production			
Current	Potential	Casing Pressure	Producing
Oil - * -	- * - BBL/D	247.1 psi (g)	
Water - * -	- * - BBL/D	Casing Pressure Buildup	Annular
Gas - * -	- * - Mscf/D	0.0 psi	Gas Flow
		0.25 min	2 Mscf/D
IPR Method	Vogel	Gas/Liquid Interface Pressure	% Liquid
PBHP/SBHP	- * -	272.2 psi (g)	88 %
Production Efficiency	0.0		
Oil 40 deg.API		Liquid Level Depth	
Water 1.05 Sp.Gr.H2O		4191.95 ft	
Gas 0.64 Sp.Gr.AIR		Pump Intake Depth	
		4308.00 ft	
Acoustic Velocity	1360.8 ft/s	Formation Depth	
		4304.00 ft	

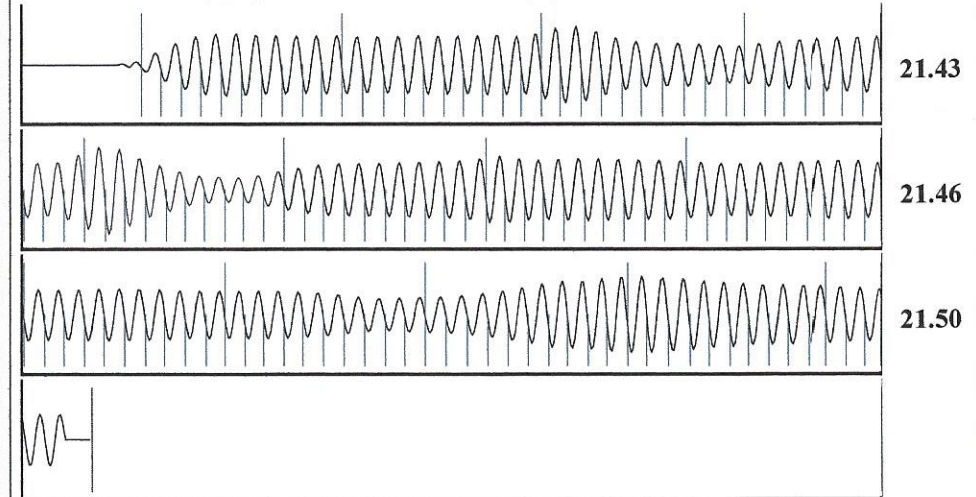


Formation Submergence  
 Total Gaseous Liquid Column HT (TVD) 116 ft  
 Equivalent Gas Free Liquid HT (TVD) 102 ft

Acoustic Test

Pump Intake 306.0 psi (g)  
 Producing BHP 304.7 psi (g)  
 Static BHP - \* - psi (g)

Group: Belpre Well: Breitenbach M 1-19 (acquired on: 04/08/20 12:35:15 )



Acoustic Velocity	1360.8 ft/s	Joints counted	122
Joints Per Second	21.4638 jts/sec	Joints to liquid level	132.238
Depth to liquid level	4191.95 ft	Filter Width	19.2766
Automatic Collar Count	Yes	Time to 1st Collar	0.276
			5.96

April 14, 2020

Loveness Mpanje  
F. G. Holl Company L.L.C.  
9431 E CENTRAL STE 100  
WICHITA, KS 67206-2563

Re: Temporary Abandonment  
API 15-047-21235-00-00  
BREITENBACH M 1-19  
SE/4 Sec.19-24S-16W  
Edwards County, Kansas

Dear Loveness Mpanje:

"Your temporary abandonment (TA) application for the well listed above has been approved. In accordance with K.A.R. 82-3-111 the TA status of this well will expire 04/14/2021.

- \* If you return this well to service or plug it, please notify the District Office.
- \* If you sell this well you are required to file a Transfer of Operator form, T-1.
- \* If the well will remain temporarily abandoned, you must submit a new TA application, CP-111, before 04/14/2021.

You may contact me at the number above if you have questions.

Very truly yours,

Michael Maier"