

KANSAS CORPORATION COMMISSION  
OIL & GAS CONSERVATION DIVISION

TEMPORARY ABANDONMENT WELL APPLICATION

All blanks must be complete

OPERATOR: License# \_\_\_\_\_  
 Name: \_\_\_\_\_  
 Address 1: \_\_\_\_\_  
 Address 2: \_\_\_\_\_  
 City: \_\_\_\_\_ State: \_\_\_\_\_ Zip: \_\_\_\_\_ + \_\_\_\_\_  
 Contact Person: \_\_\_\_\_  
 Phone:( \_\_\_\_\_ ) \_\_\_\_\_  
 Contact Person Email: \_\_\_\_\_  
 Field Contact Person: \_\_\_\_\_  
 Field Contact Person Phone: ( \_\_\_\_\_ ) \_\_\_\_\_

API No. 15- \_\_\_\_\_  
 Spot Description: \_\_\_\_\_  
 \_\_\_\_\_ - \_\_\_\_\_ - \_\_\_\_\_ - \_\_\_\_\_ Sec. \_\_\_\_\_ Twp. \_\_\_\_\_ S. R. \_\_\_\_\_  E  W  
 \_\_\_\_\_ feet from  N /  S Line of Section  
 \_\_\_\_\_ feet from  E /  W Line of Section  
 GPS Location: Lat: \_\_\_\_\_, Long: \_\_\_\_\_  
(e.g. xx.xxxxx) (e.g. -xxx.xxxxx)  
 Datum:  NAD27  NAD83  WGS84  
 County: \_\_\_\_\_ Elevation: \_\_\_\_\_  GL  KB  
 Lease Name: \_\_\_\_\_ Well #: \_\_\_\_\_  
 Well Type: (check one)  Oil  Gas  OG  WSW  Other: \_\_\_\_\_  
 SWD Permit #: \_\_\_\_\_  ENHR Permit #: \_\_\_\_\_  
 Gas Storage Permit #: \_\_\_\_\_  
 Spud Date: \_\_\_\_\_ Date Shut-In: \_\_\_\_\_

|                  | Conductor | Surface | Production | Intermediate | Liner | Tubing |
|------------------|-----------|---------|------------|--------------|-------|--------|
| Size             |           |         |            |              |       |        |
| Setting Depth    |           |         |            |              |       |        |
| Amount of Cement |           |         |            |              |       |        |
| Top of Cement    |           |         |            |              |       |        |
| Bottom of Cement |           |         |            |              |       |        |

Casing Fluid Level from Surface: \_\_\_\_\_ How Determined? \_\_\_\_\_ Date: \_\_\_\_\_  
 Casing Squeeze(s): \_\_\_\_\_ to \_\_\_\_\_ w / \_\_\_\_\_ sacks of cement, \_\_\_\_\_ to \_\_\_\_\_ w / \_\_\_\_\_ sacks of cement. Date: \_\_\_\_\_  
(top) (bottom) (top) (bottom)  
 Do you have a valid Oil & Gas Lease?  Yes  No  
 Depth and Type:  Junk in Hole at \_\_\_\_\_  Tools in Hole at \_\_\_\_\_ Casing Leaks:  Yes  No Depth of casing leak(s): \_\_\_\_\_  
(depth) (depth)  
 Type Completion:  ALT. I  ALT. II Depth of:  DV Tool: \_\_\_\_\_ w / \_\_\_\_\_ sacks of cement  Port Collar: \_\_\_\_\_ w / \_\_\_\_\_ sack of cement  
(depth) (depth)  
 Packer Type: \_\_\_\_\_ Size: \_\_\_\_\_ Inch Set at: \_\_\_\_\_ Feet  
 Total Depth: \_\_\_\_\_ Plug Back Depth: \_\_\_\_\_ Plug Back Method: \_\_\_\_\_

**Geological Data:**

| Formation Name | Formation Top | Formation Base | Completion Information                                                             |
|----------------|---------------|----------------|------------------------------------------------------------------------------------|
| 1. _____       | At: _____     | to _____ Feet  | Perforation Interval _____ to _____ Feet or Open Hole Interval _____ to _____ Feet |
| 2. _____       | At: _____     | to _____ Feet  | Perforation Interval _____ to _____ Feet or Open Hole Interval _____ to _____ Feet |

UNDER PENALTY OF PERJURY I HEREBY ATTEST THAT THE INFORMATION CONTAINED HEREIN IS TRUE AND CORRECT TO THE BEST OF MY KNOWLEDGE

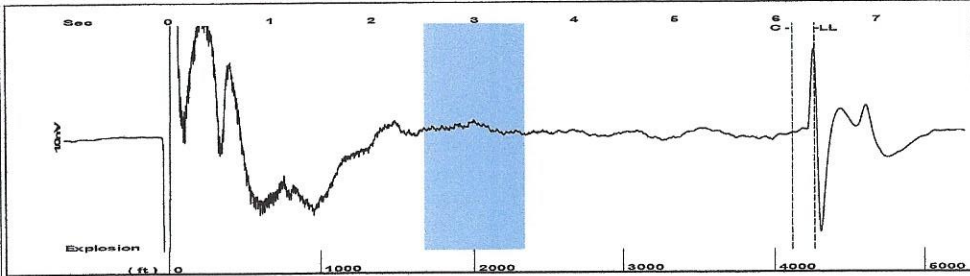
Submitted Electronically

|                                                                                       |                                            |                |                     |                      |                                 |
|---------------------------------------------------------------------------------------|--------------------------------------------|----------------|---------------------|----------------------|---------------------------------|
| <b>Do NOT Write in This Space - KCC USE ONLY</b>                                      | Date Tested: _____                         | Results: _____ | Date Plugged: _____ | Date Repaired: _____ | Date Put Back in Service: _____ |
|                                                                                       | Review Completed by: _____ Comments: _____ |                |                     |                      |                                 |
| TA Approved: <input type="checkbox"/> Yes <input type="checkbox"/> Denied Date: _____ |                                            |                |                     |                      |                                 |

Mail to the Appropriate KCC Conservation Office:

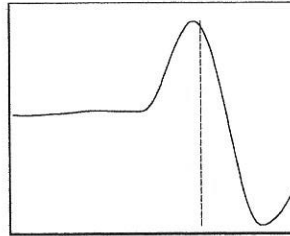
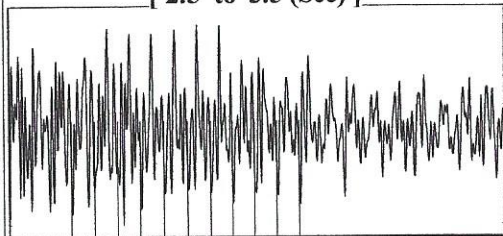
|                                                                                    |                                                                                        |                    |
|------------------------------------------------------------------------------------|----------------------------------------------------------------------------------------|--------------------|
|  | KCC District Office #1 - 210 E. Frontview, Suite A, Dodge City, KS 67801               | Phone 620.682.7933 |
|                                                                                    | KCC District Office #2 - 3450 N. Rock Road, Building 600, Suite 601, Wichita, KS 67226 | Phone 316.337.7400 |
|                                                                                    | KCC District Office #3 - 137 E. 21st St., Chanute, KS 66720                            | Phone 620.902.6450 |
|                                                                                    | KCC District Office #4 - 2301 E. 13th Street, Hays, KS 67601-2651                      | Phone 785.261.6250 |

Group: Belpre Well: Breitenbach D 1-29 (acquired on: 04/06/20 13:45:54 )



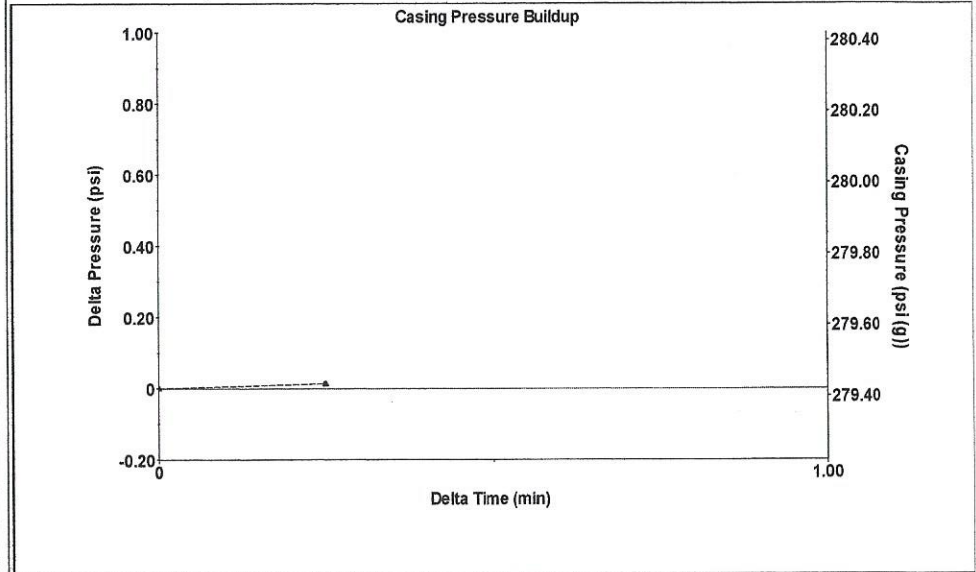
Filter Type High Pass Automatic Collar Count Yes Time 6.373 sec  
 Manual Acoustic Velo 1323.31 ft/s Manual JTS/sec 21.7865 Joints 140.293 Jts  
 Depth 4260.70 ft

[ 2.5 to 3.5 (Sec) ]



Analysis Method: Automatic

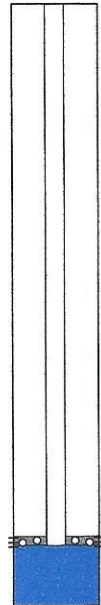
Group: Belpre Well: Breitenbach D 1-29 (acquired on: 04/06/20 13:45:54 )



Change in Pressure 0.01 psi PT13440  
 Range 0 - ? psi  
 Change in Time 0.25 min

Group: Belpre Well: Breitenbach D 1-29 (acquired on: 04/06/20 13:45:54 )

|                       |              |                               |           |
|-----------------------|--------------|-------------------------------|-----------|
| Production            |              | Casing Pressure               | Producing |
| Current               | Potential    | 279.4 psi (g)                 |           |
| Oil - * -             | - * - BBL/D  | Casing Pressure Buildup       | Annular   |
| Water - * -           | - * - BBL/D  | 0.0 psi                       | Gas Flow  |
| Gas - * -             | - * - Mscf/D | 0.25 min                      | 1 Mscf/D  |
|                       |              | Gas/Liquid Interface Pressure | % Liquid  |
| IPR Method            | Vogel        | 309.0 psi (g)                 | 91 %      |
| PBHP/SBHP             | - * -        |                               |           |
| Production Efficiency | 0.0          | Liquid Level Depth            |           |
|                       |              | 4260.70 ft                    |           |
| Oil 40 deg.API        |              | Pump Intake Depth             |           |
| Water 1.05 Sp.Gr.H2O  |              | 4344.00 ft                    |           |
| Gas 0.65 Sp.Gr.AIR    |              | Formation Depth               |           |
|                       |              | 4317.00 ft                    |           |
| Acoustic Velocity     | 1337.11 ft/s |                               |           |

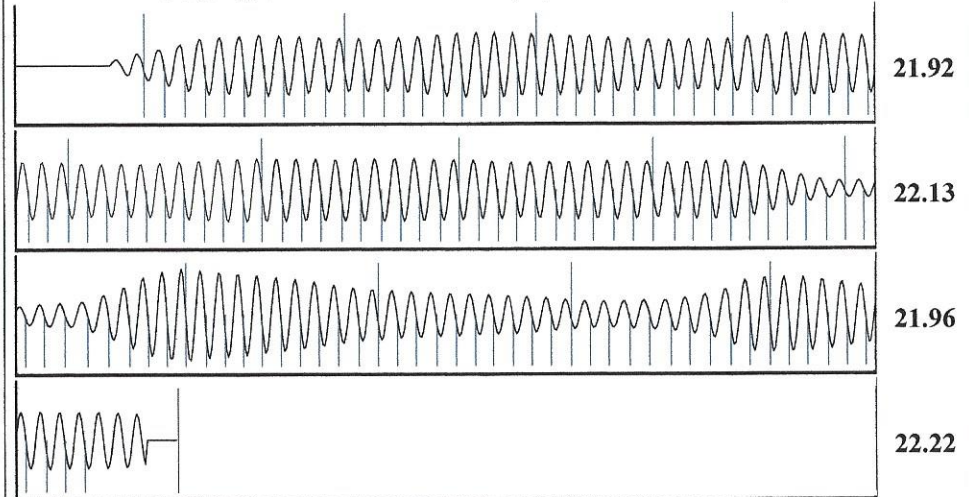


Formation Submergence  
 Total Gaseous Liquid Column HT (TVD) 83 ft  
 Equivalent Gas Free Liquid HT (TVD) 78 ft

Acoustic Test

Pump Intake 334.8 psi (g)  
 Producing BHP 325.9 psi (g)  
 Static BHP - \* - psi (g)

Group: Belpre Well: Breitenbach D 1-29 (acquired on: 04/06/20 13:45:54 )



|                        |                 |                        |         |
|------------------------|-----------------|------------------------|---------|
| Acoustic Velocity      | 1337.11 ft/s    | Joints counted         | 129     |
| Joints Per Second      | 22.0137 jts/sec | Joints to liquid level | 140.293 |
| Depth to liquid level  | 4260.7 ft       | Filter Width           | 19.7865 |
| Automatic Collar Count | Yes             | Time to 1st Collar     | 0.296   |
|                        |                 |                        | 6.156   |

April 14, 2020

Loveness Mpanje  
F. G. Holl Company L.L.C.  
9431 E CENTRAL STE 100  
WICHITA, KS 67206-2563

Re: Temporary Abandonment  
API 15-047-20863-00-00  
BREITENBACH D 1-29  
SW/4 Sec.29-24S-16W  
Edwards County, Kansas

Dear Loveness Mpanje:

"Your temporary abandonment (TA) application for the well listed above has been approved. In accordance with K.A.R. 82-3-111 the TA status of this well will expire 04/14/2021.

- \* If you return this well to service or plug it, please notify the District Office.
- \* If you sell this well you are required to file a Transfer of Operator form, T-1.
- \* If the well will remain temporarily abandoned, you must submit a new TA application, CP-111, before 04/14/2021.

You may contact me at the number above if you have questions.

Very truly yours,

Michael Maier"