

KANSAS CORPORATION COMMISSION
OIL & GAS CONSERVATION DIVISION

TEMPORARY ABANDONMENT WELL APPLICATION

OPERATOR: License#
Name:
Address 1:
Address 2:
City: State: Zip:
Contact Person:
Phone:
Contact Person Email:
Field Contact Person:
Field Contact Person Phone:

API No. 15-
Spot Description:
Sec. Twp. S. R.
GPS Location: Lat, Long
Datum: NAD27, NAD83, WGS84
County: Elevation:
Lease Name: Well #:
Well Type: Oil, Gas, OG, WSW, Other
SWD Permit #: ENHR Permit #:
Gas Storage Permit #:
Spud Date: Date Shut-In:

Table with 7 columns: Conductor, Surface, Production, Intermediate, Liner, Tubing. Rows include Size, Setting Depth, Amount of Cement, Top of Cement, Bottom of Cement.

Casing Fluid Level from Surface: How Determined? Date:
Casing Squeeze(s): to w / sacks of cement, to w / sacks of cement. Date:
Do you have a valid Oil & Gas Lease? Yes No
Depth and Type: Junk in Hole at Tools in Hole at Casing Leaks: Yes No Depth of casing leak(s):
Type Completion: ALT. I ALT. II Depth of: DV Tool: w / sacks of cement Port Collar: w / sack of cement
Packer Type: Size: Inch Set at: Feet
Total Depth: Plug Back Depth: Plug Back Method:

Geological Data:

Table with 4 columns: Formation Name, Formation Top, Formation Base, Completion Information. Rows 1 and 2.

UNDER PENALTY OF PERJURY I HEREBY ATTEST THAT THE INFORMATION CONTAINED HEREIN IS TRUE AND CORRECT TO THE BEST OF MY KNOWLEDGE

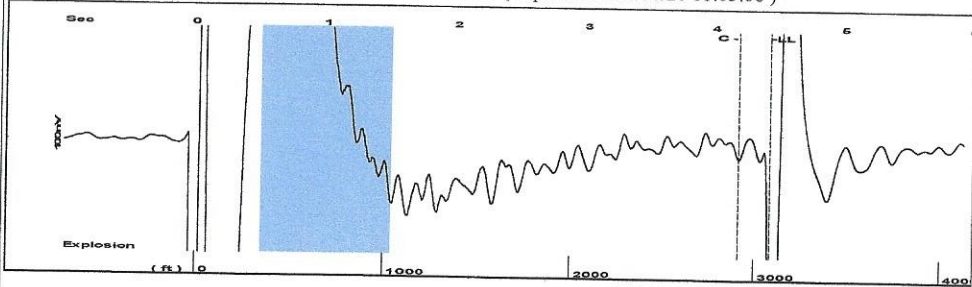
Submitted Electronically

Do NOT Write in This Space - KCC USE ONLY
Date Tested: Results: Date Plugged: Date Repaired: Date Put Back in Service:
Review Completed by: Comments:
TA Approved: Yes Denied Date:

Mail to the Appropriate KCC Conservation Office:

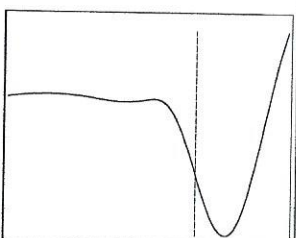
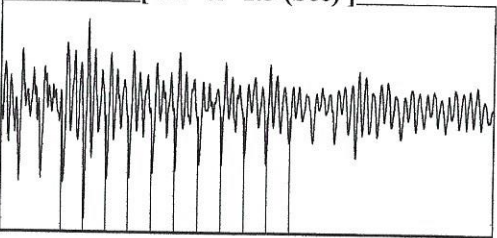
Table with 3 columns: District Office #, Address, Phone. Rows 1-4.

Group: Belpre Well: Newsome 1-14 (acquired on: 04/06/20 11:05:06)



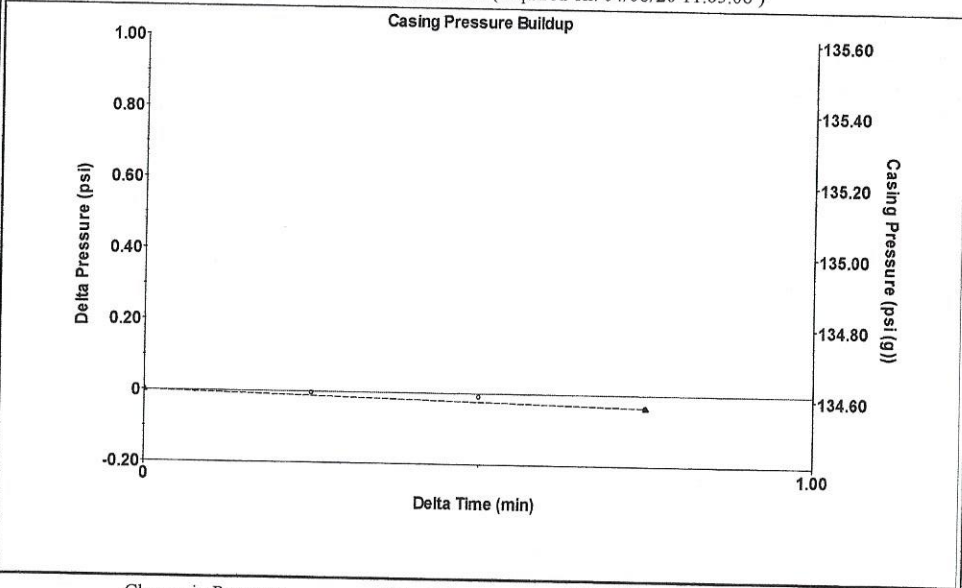
Filter Type High Pass Automatic Collar Count Yes Time 4.422 sec
 Manual Acoustic Velo 1369.57 ft/s Manual JTS/sec 21.7391 Joints 97.8117 Jts
 Depth 3081.07 ft

[0.5 to 1.5 (Sec)]



Analysis Method: Automatic

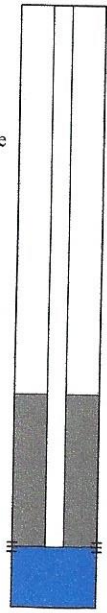
Group: Belpre Well: Newsome 1-14 (acquired on: 04/06/20 11:05:06)



Change in Pressure -0.04 psi PT13440
 Change in Time 0.75 min Range 0 - ? psi

Group: Belpre Well: Newsome 1-14 (acquired on: 04/06/20 11:05:06)

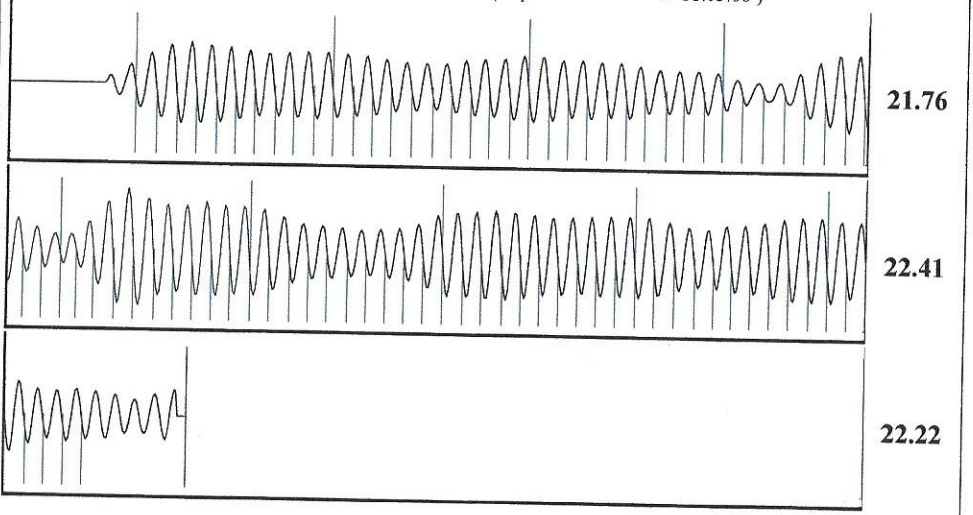
Production Current	Potential	Casing Pressure
Oil -*- -*- BBL/D		134.6 psi (g)
Water -*- -*- BBL/D		Casing Pressure Buildup
Gas -*- -*- Mscf/D		-0.0 psi
		0.75 min
IPR Method	Vogel	Gas/Liquid Interface Pressure
PBHP/SBHP	-*- -*-	144.6 psi (g)
Production Efficiency	0.0	
Oil 40 deg.API		Liquid Level Depth
Water 1.05 Sp.Gr.H2O		3081.07 ft
Gas 0.61 Sp.Gr.AIR		Pump Intake Depth
		4505.00 ft
Acoustic Velocity	1393.52 ft/s	Formation Depth
		4505.00 ft



Producing
 Annular Gas Flow 0 Mscf/D
 % Liquid 100 %
 Pump Intake 614.8 psi (g)
 Producing BHP 614.8 psi (g)
 Static BHP -*- psi (g)

Formation Submergence
 Total Gaseous Liquid Column HT (TVD) 1424 ft
 Equivalent Gas Free Liquid HT (TVD) 1424 ft
 Acoustic Test

Group: Belpre Well: Newsome 1-14 (acquired on: 04/06/20 11:05:06)



Acoustic Velocity	1393.52 ft/s	Joints counted	86
Joints Per Second	22.1193 jts/sec	Joints to liquid level	97.8117
Depth to liquid level	3081.07 ft	Filter Width	19.7391
Automatic Collar Count	Yes	Time to 1st Collar	0.292
			23.7391
			4.18

April 14, 2020

Loveness Mpanje
F. G. Holl Company L.L.C.
9431 E CENTRAL STE 100
WICHITA, KS 67206-2563

Re: Temporary Abandonment
API 15-047-20253-00-00
NEWSOME 1
SE/4 Sec.14-26S-17W
Edwards County, Kansas

Dear Loveness Mpanje:

"Your temporary abandonment (TA) application for the well listed above has been approved. In accordance with K.A.R. 82-3-111 the TA status of this well will expire 04/14/2021.

- * If you return this well to service or plug it, please notify the District Office.
- * If you sell this well you are required to file a Transfer of Operator form, T-1.
- * If the well will remain temporarily abandoned, you must submit a new TA application, CP-111, before 04/14/2021.

You may contact me at the number above if you have questions.

Very truly yours,

Michael Maier"