

KANSAS CORPORATION COMMISSION
OIL & GAS CONSERVATION DIVISION

TEMPORARY ABANDONMENT WELL APPLICATION

OPERATOR: License#
Name:
Address 1:
Address 2:
City: State: Zip:
Contact Person:
Phone:
Contact Person Email:
Field Contact Person:
Field Contact Person Phone:

API No. 15-
Spot Description:
Sec. Twp. S. R.
GPS Location: Lat: Long:
Datum: NAD27 NAD83 WGS84
County: Elevation:
Lease Name: Well #:
Well Type: Oil Gas OG WSW Other:
SWD Permit #: ENHR Permit #:
Gas Storage Permit #:
Spud Date: Date Shut-In:

Table with 7 columns: Conductor, Surface, Production, Intermediate, Liner, Tubing. Rows include Size, Setting Depth, Amount of Cement, Top of Cement, Bottom of Cement.

Casing Fluid Level from Surface: How Determined? Date:
Casing Squeeze(s): to w / sacks of cement, to w / sacks of cement. Date:
Do you have a valid Oil & Gas Lease? Yes No
Depth and Type: Junk in Hole at Tools in Hole at Casing Leaks: Yes No Depth of casing leak(s):
Type Completion: ALT. I ALT. II Depth of: DV Tool: w / sacks of cement Port Collar: w / sack of cement
Packer Type: Size: Inch Set at: Feet
Total Depth: Plug Back Depth: Plug Back Method:

Geological Data:

Table with 4 columns: Formation Name, Formation Top, Formation Base, Completion Information. Rows 1 and 2.

UNDER PENALTY OF PERJURY I HEREBY ATTEST THAT THE INFORMATION CONTAINED HEREIN IS TRUE AND CORRECT TO THE BEST OF MY KNOWLEDGE

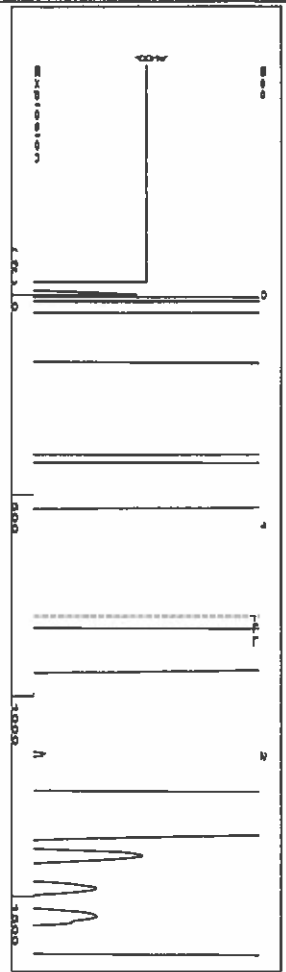
Submitted Electronically

Do NOT Write in This Space - KCC USE ONLY
Date Tested: Results: Date Plugged: Date Repaired: Date Put Back in Service:
Review Completed by: Comments:
TA Approved: Yes Denied Date:

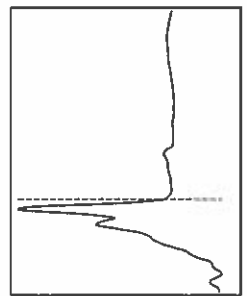
Mail to the Appropriate KCC Conservation Office:

Table with 2 columns: Office Address, Phone. Rows for District Office #1, #2, #3, #4.

Group: TAD Well: Robinson D2 (acquired on: 03/12/20 08:47:36)



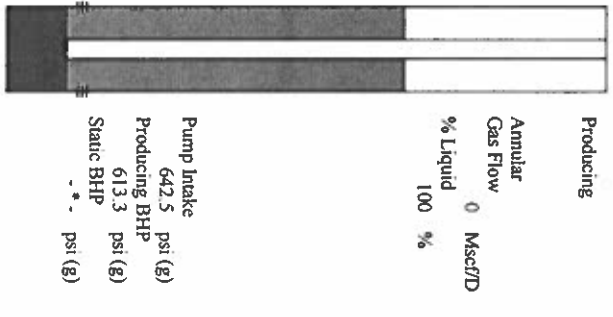
Liquid level calculated with user supplied Acoustic Velocity  
 Acoustic Velocity 1150 ft/s



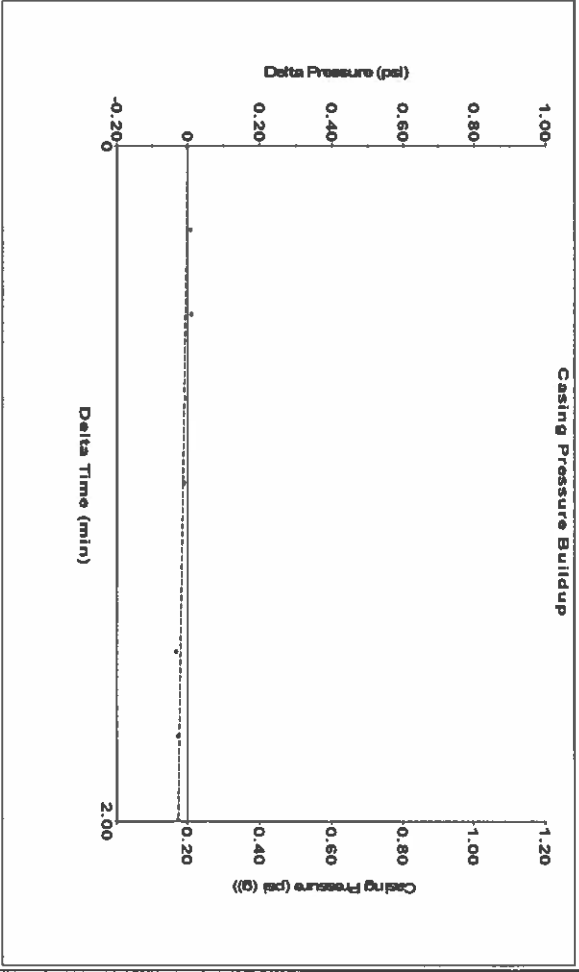
**Analysis Method: Acoustic Velocity**

Group: TAD Well: Robinson D2 (acquired on: 03/12/20 08:47:36)

Production	Potential	Casing Pressure	Producing
Oil -*- BBL/D	-*- BBL/D	0.2 psi (g)	Annular Gas Flow 0 Mscf/D
Water -*- BBL/D	-*- BBL/D	Casing Pressure Buildup -0.0 psi	% Liquid 100 %
Gas -*- Mscf/D	-*- Mscf/D	2.00 min	
IPR Method Vogel		Gas/Liquid Interface Pressure 0.6 psi (g)	
PBHP/SBHP -*-			
Production Efficiency 0.0			
Oil 40 deg API		Liquid Level Depth 799.25 ft	
Water 1.05 Sp.Gr.H2O		Pump Intake Depth 2713.00 ft	
Gas 0.85 Sp.Gr.AIR		Formation Depth 2622.00 ft	
Acoustic Velocity 1150 ft/s			



Group: TAD Well: Robinson D2 (acquired on: 03/12/20 08:47:36)



Change in Pressure -0.03 psi  
 Change in Time 2.00 min  
 PT 6902 Range  
 0 - ? psi

Group: TAD Well: Robinson D2 (acquired on: 03/12/20 08:47:36)

**Entered Acoustic Velocity for Liquid Level depth determination**

April 23, 2020

Katherine McClurkan  
Merit Energy Company, LLC  
13727 Noel Road, Suite 1200  
Dallas, TX 75240

Re: Temporary Abandonment  
API 15-093-20475-00-00  
Robison D 2  
NE/4 Sec.05-25S-36W  
Kearny County, Kansas

Dear Katherine McClurkan:

"Your temporary abandonment (TA) application for the well listed above has been approved. In accordance with K.A.R. 82-3-111 the TA status of this well will expire 04/23/2021.

- \* If you return this well to service or plug it, please notify the District Office.
- \* If you sell this well you are required to file a Transfer of Operator form, T-1.
- \* If the well will remain temporarily abandoned, you must submit a new TA application, CP-111, before 04/23/2021.

You may contact me at the number above if you have questions.

Very truly yours,

Michael Maier"