

KANSAS CORPORATION COMMISSION
OIL & GAS CONSERVATION DIVISION

TEMPORARY ABANDONMENT WELL APPLICATION

OPERATOR: License#
Name:
Address 1:
Address 2:
City: State: Zip:
Contact Person:
Phone:
Contact Person Email:
Field Contact Person:
Field Contact Person Phone:

API No. 15-
Spot Description:
Sec. Twp. S. R.
GPS Location: Lat: Long:
Datum: NAD27 NAD83 WGS84
County: Elevation:
Lease Name: Well #:
Well Type: Oil Gas OG WSW Other:
SWD Permit #: ENHR Permit #:
Gas Storage Permit #:
Spud Date: Date Shut-In:

Table with 7 columns: Conductor, Surface, Production, Intermediate, Liner, Tubing. Rows include Size, Setting Depth, Amount of Cement, Top of Cement, Bottom of Cement.

Casing Fluid Level from Surface: How Determined? Date:
Casing Squeeze(s): to w / sacks of cement, to w / sacks of cement. Date:
Do you have a valid Oil & Gas Lease? Yes No
Depth and Type: Junk in Hole at Tools in Hole at Casing Leaks: Yes No Depth of casing leak(s):
Type Completion: ALT. I ALT. II Depth of: DV Tool: w / sacks of cement Port Collar: w / sack of cement
Packer Type: Size: Inch Set at: Feet
Total Depth: Plug Back Depth: Plug Back Method:

Geological Data:

Table with 4 columns: Formation Name, Formation Top, Formation Base, Completion Information. Rows 1 and 2.

UNDER PENALTY OF PERJURY I HEREBY ATTEST THAT THE INFORMATION CONTAINED HEREIN IS TRUE AND CORRECT TO THE BEST OF MY KNOWLEDGE

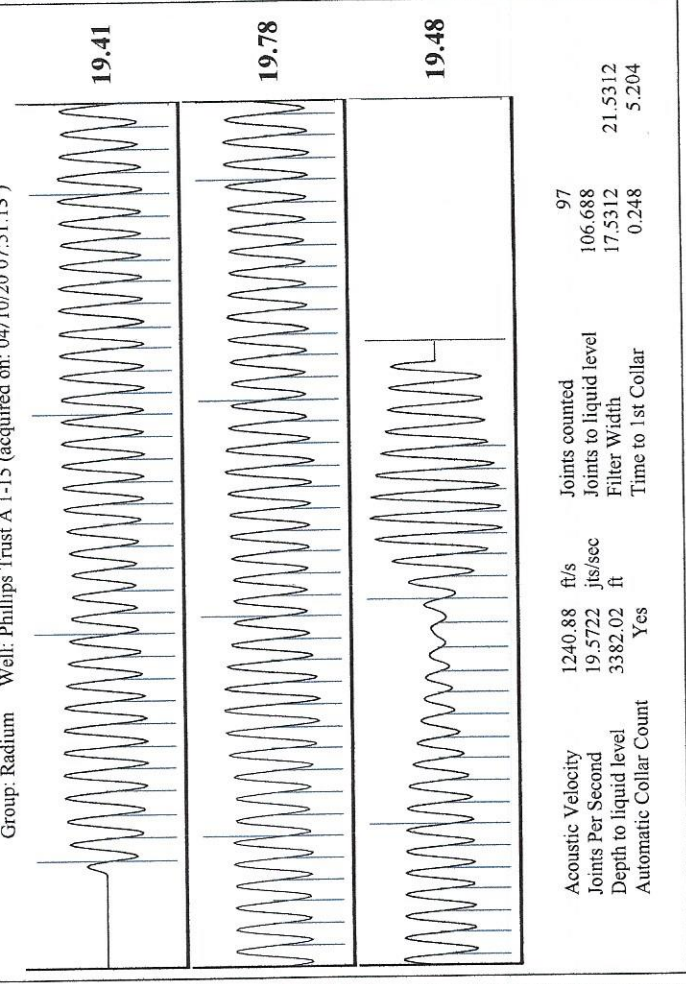
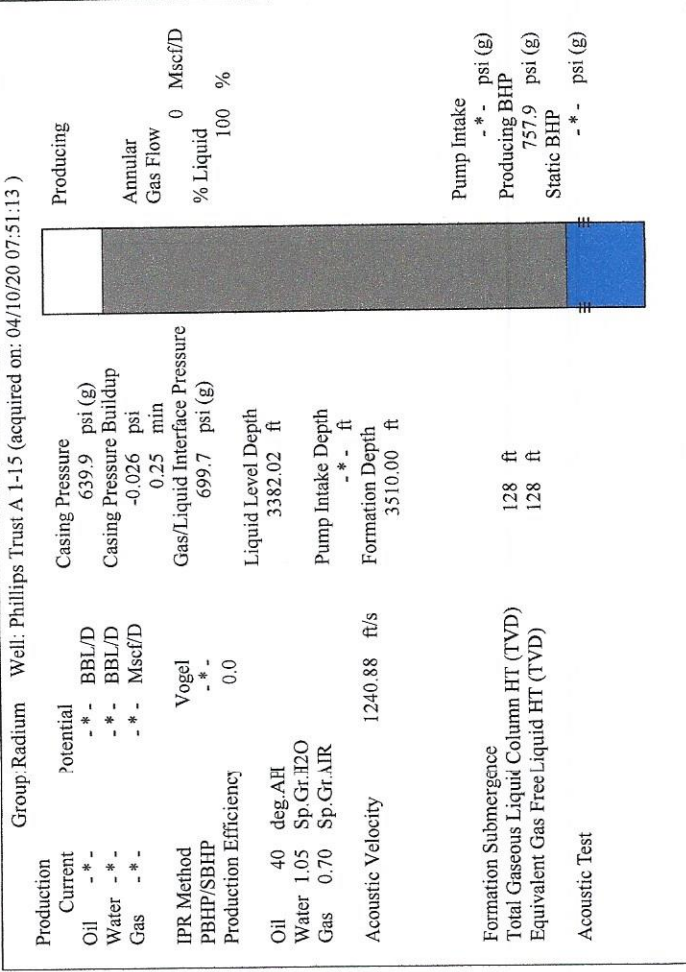
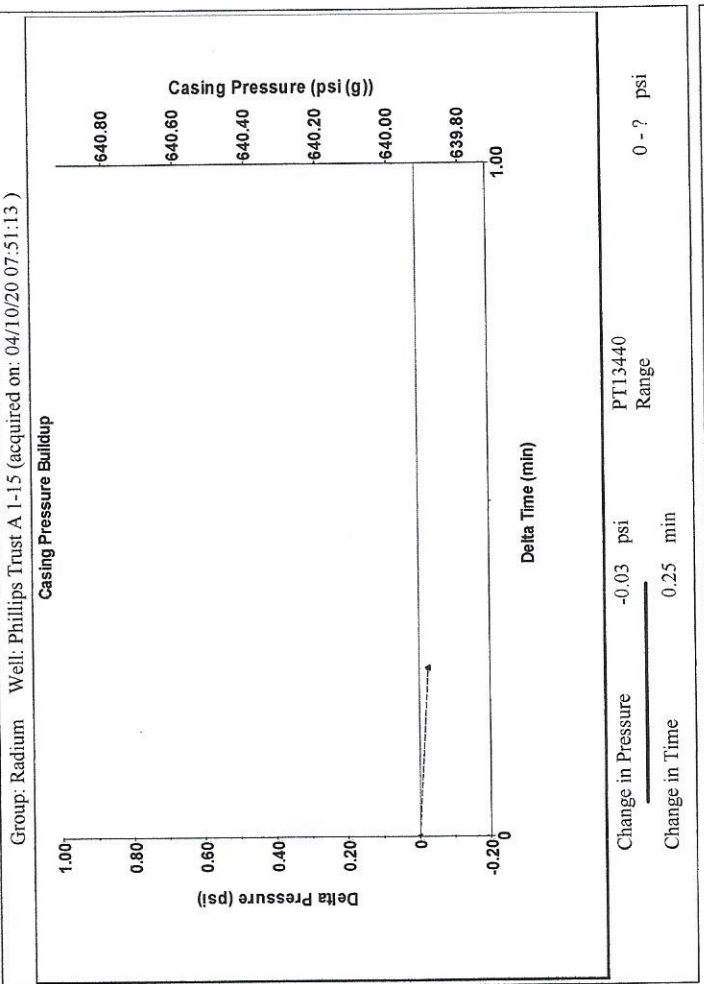
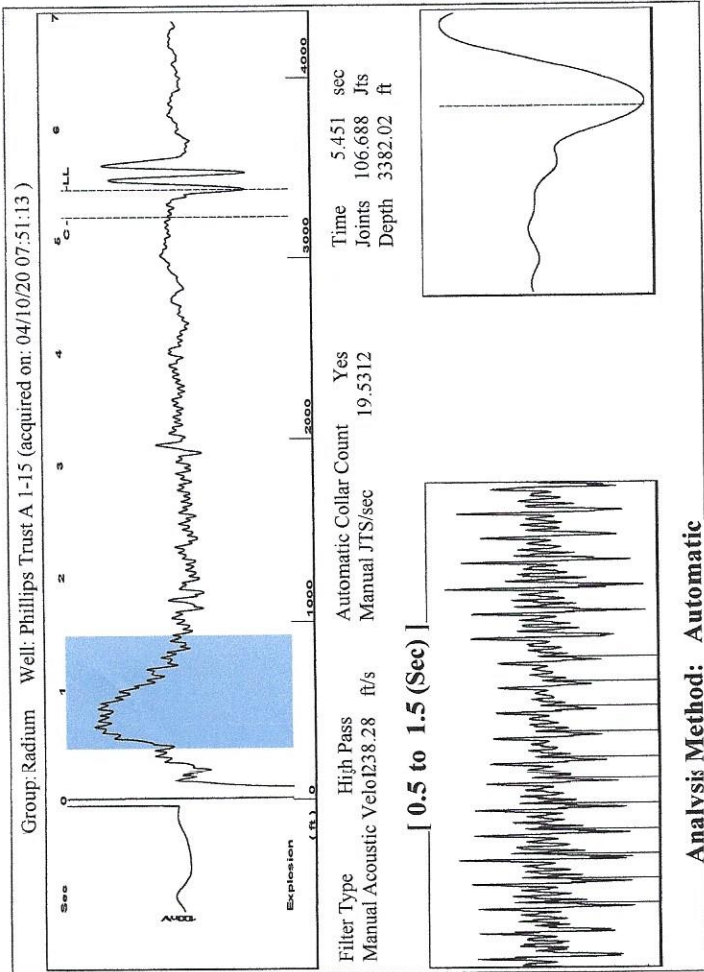
Submitted Electronically

Do NOT Write in This Space - KCC USE ONLY
Date Tested: Results: Date Plugged: Date Repaired: Date Put Back in Service:
Review Completed by: Comments:
TA Approved: Yes Denied Date:

Mail to the Appropriate KCC Conservation Office:

Table with 2 columns: Office Address, Phone. Rows for District Office #1, #2, #3, #4.





Analysis Method: Automatic

Group: Radium Well: Phillips Trust A 1-15 (acquired on: 04/10/20 07:51:13)

Production	potential	Casing Pressure	639.9 psi (g)
Current	- * - BBL/D	Casing Pressure Buildup	-0.026 psi
Oil	- * - BBL/D	Gas/Liquid Interface Pressure	699.7 psi (g)
Water	- * - Mscf/D		
Gas	- * - Mscf/D		
IPR Method	Vogel		
PBHP/SBHP	- * -		
Production Efficiency	0.0		
Oil	40 deg.AH	Liquid Level Depth	3382.02 ft
Water	1.05 Sp.Gr.:H2O	Pump Intake Depth	- * - ft
Gas	0.70 Sp.Gr.:AIR	Formation Depth	3510.00 ft
Acoustic Velocity	1240.88 ft/s		
Formation Submergence			
Total Gaseous Liquid Column HT (TVD)			128 ft
Equivalent Gas Free Liquid HT (TVD)			128 ft
Acoustic Test			

Producing

Annular Gas Flow 0 Mscf/D

% Liquid 100 %

Pump Intake - * - psi (g)

Producing BHP 757.9 psi (g)

Static BHP - * - psi (g)

April 23, 2020

Loveness Mpanje
F. G. Holl Company L.L.C.
9431 E CENTRAL STE 100
WICHITA, KS 67206-2563

Re: Temporary Abandonment
API 15-009-25394-00-00
PHILLIP TRUST A 1-15
NE/4 Sec.15-20S-14W
Barton County, Kansas

Dear Loveness Mpanje:

"Your temporary abandonment (TA) application for the well listed above has been approved. In accordance with K.A.R. 82-3-111 the TA status of this well will expire 04/23/2021.

- * If you return this well to service or plug it, please notify the District Office.
- * If you sell this well you are required to file a Transfer of Operator form, T-1.
- * If the well will remain temporarily abandoned, you must submit a new TA application, CP-111, before 04/23/2021.

You may contact me at the number above if you have questions.

Very truly yours,

RICHARD WILLIAMS"