

P.O. BOX 87  
SCHENGEN, KS 67867  
PHONE: 785-625-5155

**GEOLOGIST'S REPORT**  
DRILLING TIME AND SAMPLE LOG

COMPANY: CASTLE RESOURCES INC.

LEASE: SCOTTS #1

FIELD: WILDCAT

LOCATION: BROWN BROWNL

SEC: 36 T15P 8S R6E 28W

COUNTY: SHERIDAN STATE: KS

CONTRACTOR: WHITE KNIGHT DRLLG.

SPUD: 12-30-19 COMP: 1-7-20

RTD: 4997 LTD: 4992

MUD UP: 3300 TYPE MUD: CHEM.

ELEVATIONS

KB: 2828

DF: 2823

Measurements Are All From

CASING

SURFACE @ 218'

PRODUCTION

ELECTRICAL SURVEYS

STACK

SAMPLES SAVED FROM: 3200' TO TD  
 DRILLING TIME KEPT FROM: 3300' TO TD  
 SAMPLES EXAMINED FROM: 3300' TO TD  
 GEOLOGICAL SUPERVISION FROM: 3300' TO

GEOLOGIST ON WELL: 4TH-7TH

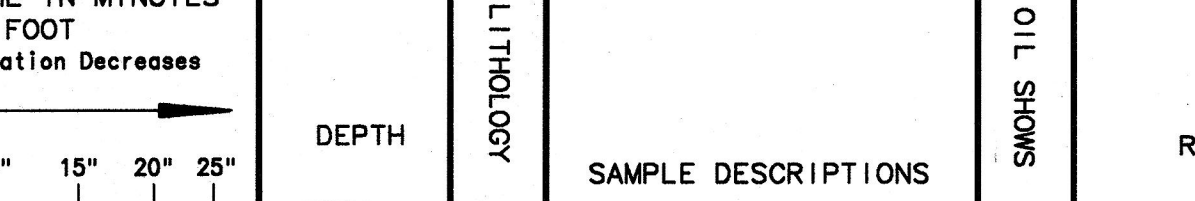
FORMATION TOPS LOG SAMPLES

HEEBNER	3757-1129	3754-1126
TORONTO	3782-1152	3774-1146
LKC	3797-1169	3789-1161
BKC	4021-1393	4020-1393
FT SCOTT	4234-1606	4234-1606
CHEROKEE LMS	4266-1638	4264-1636
CHEROKEE	4292-1664	4291-1669


REMARKS: All parties involved recommended that this well be plugged respectfully submitted

*[Signature]*

**LEGEND**



DEPTH	LITHOLOGY	SAMPLE DESCRIPTIONS	OIL SHOWS	REMARKS
3300'				
		Alt barren lms and varicol sh		
3350'		Varicol sh		
		Rd shale		
		lms offh abt 1 ft Ft barren w Alt varicol shales		
3450'				
3500'				
		lms wh offh Ft lms chalky - fm barren		
3550'				
3600'		Black sh		
		lms wh - tr fx Fr - fm barren interx + foss Per		
3650'		Black sh inc 60		
		lms offh w sand inclusions barren		
		lms wh - offh Ft barren with interx + foss Per		
3700'		Black sh inc 20		
		lms wh tr fr - fm fx barren		
3750'		Black shale GS 30 minute sample		
		lms wh - offh vm dead st interx Per no fo no odor		
3800'		lms wh - offh tr hite st tight interx Per vm dead st no fo or odor		
		lms wh fx vm dead staining interx + foss Per		
3850'				
		lms wh - offh Ft barren interx Per		
3900'		lms wh - offh Chalky - fm foss in pt barren		
		Varicol shale		
		lms wh - offh Fr - fm barren		
3950'				
		+ tr cherty hms		
		lms offh foss Fr coarse x lms m. Adeq fo st interx foss x + fm hole bug Per		
4000'		lms offh fx vm fo + st interx + foss Per		
		lms wh - offh Fr - fm tr fo st mostly barren interx Per		
4050'		SS. fgr. w glauc inclusions barren		
		lms offh - tr fx fm barren cherty		
		lms as above Alt w varicol sh		
4100'				
4150'		lms offh - tr fx fm to cherty barren		
		Black shale		
		lms tr - Gray fm barren		
4200'		lms offh - tr fm interx Per barren		
		Black shale		
		lms offh to tr Ft vm fo st interx foss Per lms offh Fr m fo st interx + foss Per		
4250'				
		lms wh - offh Fr m fo st interx + foss Per		
4300'		varicol shale		

DST #1 4010  
3932 -  
78'  
Zones tested:  
ISKL  
Blow: 1'-4'  
Times: 45-45-45-45  
Rec: 68MSW  
FP: 15-39  
35-44  
SIP: 1287-1272

Times: 45-30  
DST #2  
4220-97  
Zones Tested:  
Ft Scott  
Cherokee lms  
Blow: Dried  
After 35"  
Rec: 5' mud  
FP 17-18  
SIP: 27

GREEN-7

HEEBNER 3754-1129

TORONTO 3774-1146

LKC 3789-1161

BKC 4020-1393

FT SCOTT 4234-1606

CHEROKEE LMS 4264-1636

CHEROKEE 4291-1669

change list

BKC 4020-1393

FT SCOTT 4234-1606

CHEROKEE LMS 4264-1636