

KANSAS CORPORATION COMMISSION
OIL & GAS CONSERVATION DIVISION

TEMPORARY ABANDONMENT WELL APPLICATION

OPERATOR: License#
Name:
Address 1:
Address 2:
City: State: Zip:
Contact Person:
Phone:
Contact Person Email:
Field Contact Person:
Field Contact Person Phone:

API No. 15-
Spot Description:
Sec. Twp. S. R.
feet from N / S Line of Section
feet from E / W Line of Section
GPS Location: Lat: , Long:
Datum: NAD27 NAD83 WGS84
County: Elevation: GL KB
Lease Name: Well #:
Well Type: Oil Gas OG WSW Other:
SWD Permit #: ENHR Permit #:
Gas Storage Permit #:
Spud Date: Date Shut-In:

Table with 7 columns: Conductor, Surface, Production, Intermediate, Liner, Tubing. Rows include Size, Setting Depth, Amount of Cement, Top of Cement, Bottom of Cement.

Casing Fluid Level from Surface: How Determined? Date:
Casing Squeeze(s): to w / sacks of cement, to w / sacks of cement. Date:
Do you have a valid Oil & Gas Lease? Yes No
Depth and Type: Junk in Hole at Tools in Hole at Casing Leaks: Yes No Depth of casing leak(s):
Type Completion: ALT. I ALT. II Depth of: DV Tool: w / sacks of cement Port Collar: w / sack of cement
Packer Type: Size: Inch Set at: Feet
Total Depth: Plug Back Depth: Plug Back Method:

Geological Data:

Table with 4 columns: Formation Name, Formation Top, Formation Base, Completion Information. Rows 1 and 2.

UNDER PENALTY OF PERJURY I HEREBY ATTEST THAT THE INFORMATION CONTAINED HEREIN IS TRUE AND CORRECT TO THE BEST OF MY KNOWLEDGE

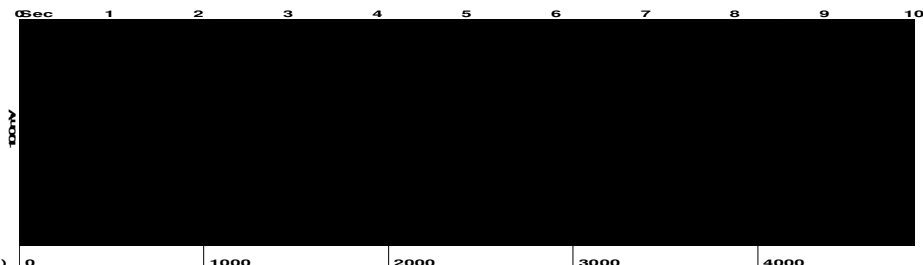
Submitted Electronically

Do NOT Write in This Space - KCC USE ONLY
Date Tested: Results: Date Plugged: Date Repaired: Date Put Back in Service:
Review Completed by: Comments:
TA Approved: Yes Denied Date:

Mail to the Appropriate KCC Conservation Office:

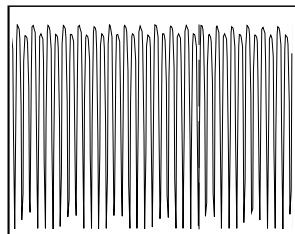
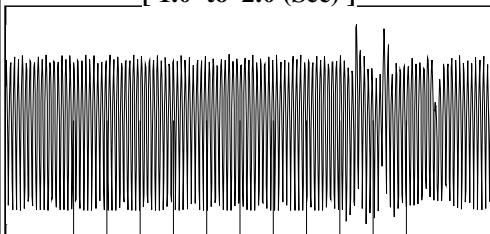
Table with 3 columns: District Office #, Address, Phone. Rows 1-4.

Group: Novy Oil & Gas Well: Hurst #1 (acquired on: 04/28/20 10:10:23)



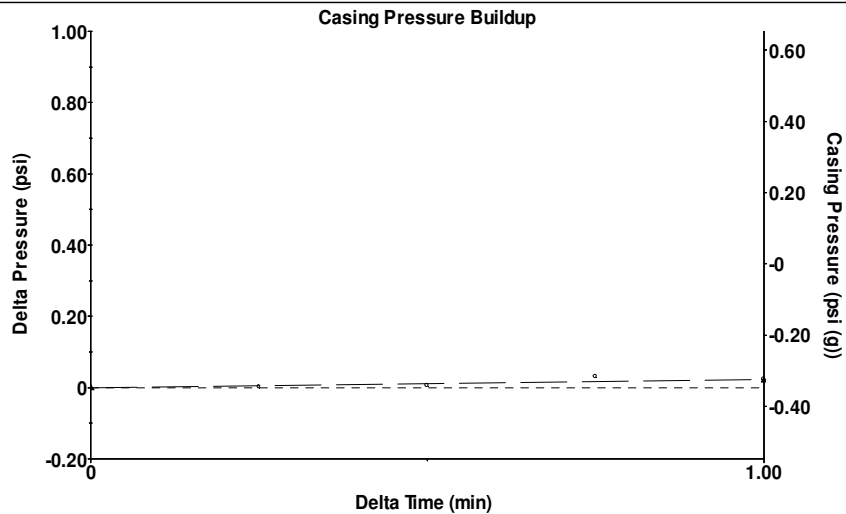
Filter Type High Pass Automatic Collar Count Yes Time 8.5 sec
 Manual Acoustic Velo 928.258 ft/s Manual JTS/sec 14.6413 Joints 129.861 Jts
 Depth 4116.60 ft

[1.0 to 2.0 (Sec)]



Analysis Method: Automatic

Group: Novy Oil & Gas Well: Hurst #1 (acquired on: 04/28/20 10:10:23)



Change in Pressure 0.02 psi PT15262
 Change in Time 1.00 min Range 0 - ? psi

Group: Novy Oil & Gas Well: Hurst #1 (acquired on: 04/28/20 10:10:23)

Production Current Potential
 Oil 19 - * - BBL/D
 Water 2600 - * - BBL/D
 Gas 1.0 - * - Mscf/D

IPR Method Vogel
 PBHP/SBHP - * -
 Production Efficiency 0.0

Oil 40 deg.API
 Water 1.05 Sp.Gr.H2O
 Gas 1.02 Sp.Gr.AIR

Acoustic Velocity 968.611 ft/s

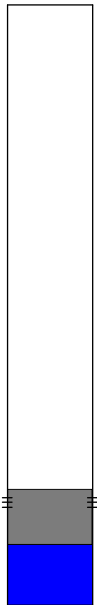
Casing Pressure -0.3 psi (g)
 Casing Pressure Buildup 0.022 psi
 Gas/Liquid Interface Pressure 1.8 psi (g)

Liquid Level Depth 4116.60 ft

Pump Intake Depth 3640.00 ft

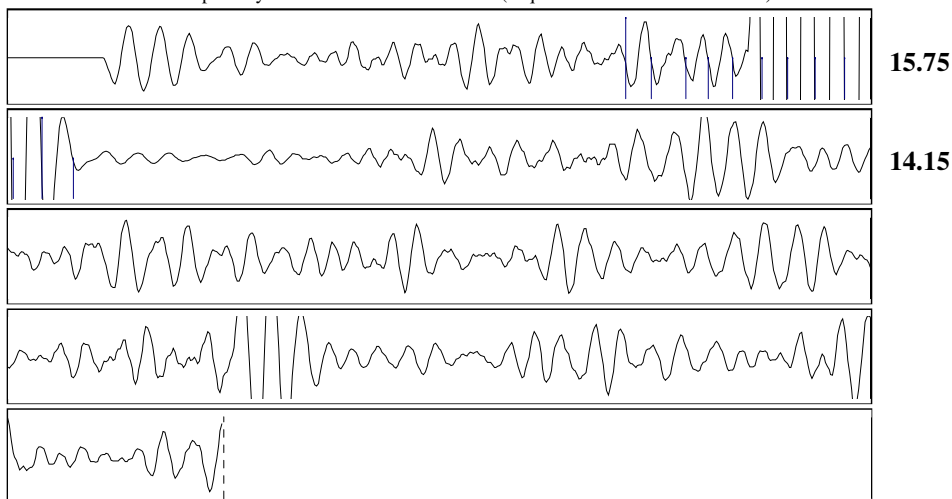
Formation Depth 3750.00 ft

Static
 Oil Column Height MD - * - ft
 Water Column Height MD - * - ft
 Static BHP 1.6 psi (g)



Acoustic Test

Group: Novy Oil & Gas Well: Hurst #1 (acquired on: 04/28/20 10:10:23)



Acoustic Velocity 968.611 ft/s Joints counted 11
 Joints Per Second 15.2778 jts/sec Joints to liquid level 129.861
 Depth to liquid level 4116.6 ft Filter Width 12.6413 16.6413
 Automatic Collar Count Yes Time to 1st Collar 1.432 2.152

May 04, 2020

Kirk Glenn
Novy Oil & Gas, Inc.
PO BOX 559
GODDARD, KS 67052-0559

Re: Temporary Abandonment
API 15-155-02239-00-00
HURST 1
SW/4 Sec.21-23S-10W
Reno County, Kansas

Dear Kirk Glenn:

"Your temporary abandonment (TA) application for the well listed above has been approved. In accordance with K.A.R. 82-3-111 the TA status of this well will expire 05/04/2021.

- * If you return this well to service or plug it, please notify the District Office.
- * If you sell this well you are required to file a Transfer of Operator form, T-1.
- * If the well will remain temporarily abandoned, you must submit a new TA application, CP-111, before 05/04/2021.

You may contact me at the number above if you have questions.

Very truly yours,

BJ Hope"