

KANSAS CORPORATION COMMISSION
OIL & GAS CONSERVATION DIVISION

TEMPORARY ABANDONMENT WELL APPLICATION

OPERATOR: License#
Name:
Address 1:
Address 2:
City: State: Zip:
Contact Person:
Phone:
Contact Person Email:
Field Contact Person:
Field Contact Person Phone:

API No. 15-
Spot Description:
Sec. Twp. S. R.
GPS Location: Lat: Long:
Datum: NAD27 NAD83 WGS84
County: Elevation:
Lease Name: Well #:
Well Type: Oil Gas OG WSW Other:
SWD Permit #: ENHR Permit #:
Gas Storage Permit #:
Spud Date: Date Shut-In:

Table with 7 columns: Conductor, Surface, Production, Intermediate, Liner, Tubing. Rows include Size, Setting Depth, Amount of Cement, Top of Cement, Bottom of Cement.

Casing Fluid Level from Surface: How Determined? Date:
Casing Squeeze(s): to w / sacks of cement, to w / sacks of cement. Date:
Do you have a valid Oil & Gas Lease? Yes No
Depth and Type: Junk in Hole at Tools in Hole at Casing Leaks: Yes No Depth of casing leak(s):
Type Completion: ALT. I ALT. II Depth of: DV Tool: w / sacks of cement Port Collar: w / sack of cement
Packer Type: Size: Inch Set at: Feet
Total Depth: Plug Back Depth: Plug Back Method:

Geological Date:

Table with 4 columns: Formation Name, Formation Top, Formation Base, Completion Information. Rows 1 and 2.

UNDER PENALTY OF PERJURY I HEREBY ATTEST THAT THE INFORMATION CONTAINED HEREIN IS TRUE AND CORRECT TO THE BEST OF MY KNOWLEDGE

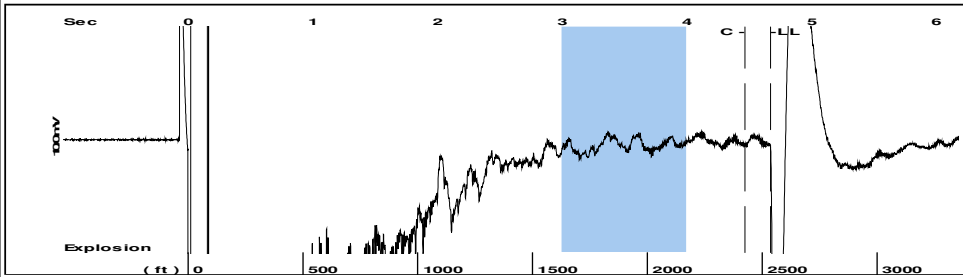
Submitted Electronically

Do NOT Write in This Space - KCC USE ONLY
Date Tested: Results: Date Plugged: Date Repaired: Date Put Back in Service:
Review Completed by: Comments:
TA Approved: Yes Denied Date:

Mail to the Appropriate KCC Conservation Office:

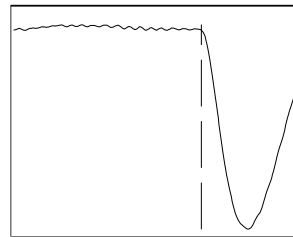
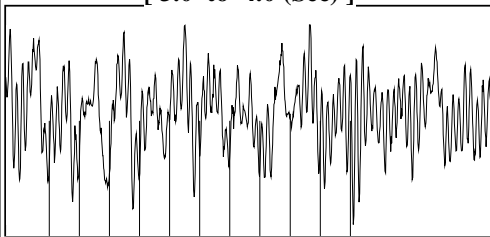
Table with 3 columns: District Office, Address, Phone. Rows for District Office #1, #2, #3, #4.

Group: MyWells Well: lippoldt #8 (acquired on: 05/01/20 13:52:30)



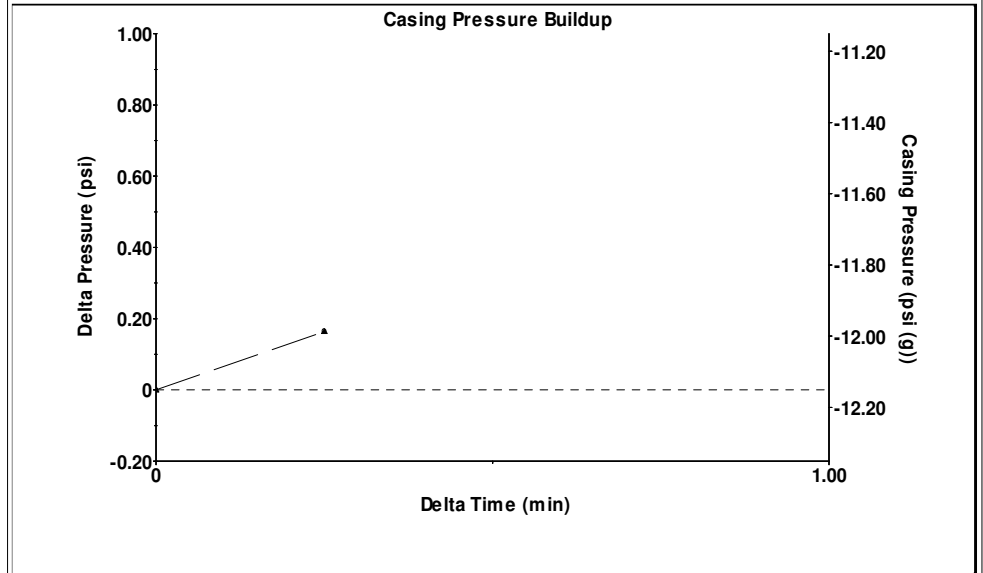
Filter Type High Pass Automatic Collar Count Yes Time 4.67 sec
 Manual Acoustic Veloc 1024.23 ft/s Manual JTS/sec 16.1551 Joints 79.9821 Jts
 Depth 2535.43 ft

[3.0 to 4.0 (Sec)]



Analysis Method: Automatic

Group: MyWells Well: lippoldt #8 (acquired on: 05/01/20 13:52:30)

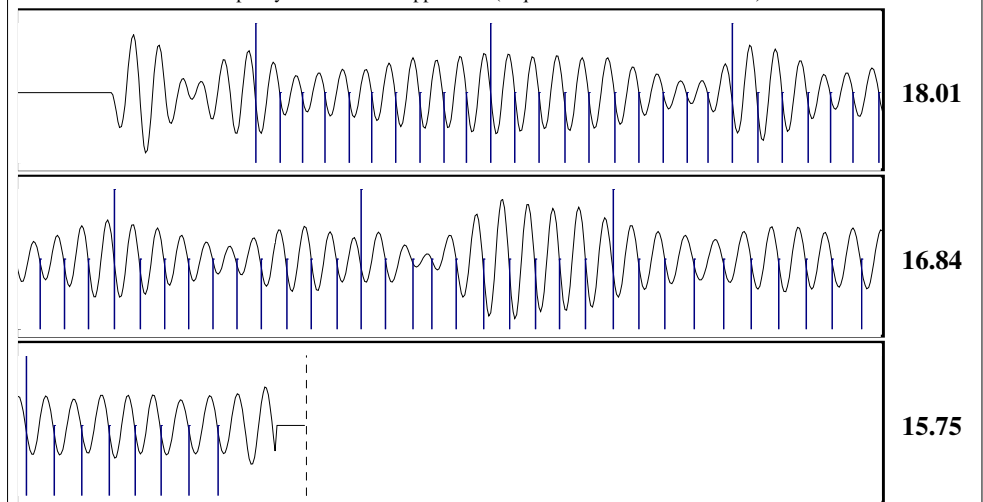


Change in Pressure 0.16 psi PT12363
 Change in Time 0.25 min Range 0 - ? psi

Group: MyWells Well: lippoldt #8 (acquired on: 05/01/20 13:52:30)

Production	Potential	Casing Pressure	Producing
Current		-12.2 psi (g)	
Oil - *-	- *- BBL/D	Casing Pressure Buildup	Annular Gas Flow
Water - *-	- *- BBL/D	0.2 psi	- *- Mscf/D
Gas - *-	- *- Mscf/D	0.25 min	% Liquid
		Gas/Liquid Interface Pressure	100 %
		- *- psi (g)	
IPR Method	Vogel	Liquid Level Depth	Pump Intake
PBHP/SBHP	- *-	2535.43 ft	- *- psi (g)
Production Efficiency	0.0	Pump Intake Depth	Producing BHP
		4300.00 ft	- *- psi (g)
Oil 40 deg.API		Formation Depth	Static BHP
Water 1.05 Sp.Gr.H2O		4200.00 ft	- *- psi (g)
Gas 0.90 Sp.Gr.AIR			
Acoustic Velocity 1085.84 ft/s			
Formation Submergence			
Total Gaseous Liquid Column HT (TVD)	- *- ft		
Equivalent Gas Free Liquid HT (TVD)	- *- ft		
Acoustic Test			

Group: MyWells Well: lippoldt #8 (acquired on: 05/01/20 13:52:30)



Acoustic Velocity 1085.84 ft/s Joints counted 67
 Joints Per Second 17.1268 jts/sec Joints to liquid level 79.9821
 Depth to liquid level 2535.43 ft Filter Width 14.1551 18.1551
 Automatic Collar Count Yes Time to 1st Collar 0.552 4.464

Susan K. Duffy, Chair
Shari Feist Albrecht, Commissioner
Dwight D. Keen, Commissioner

Laura Kelly, Governor

May 06, 2020

David Van Dyke
Vess Oil Corporation
1700 N WATERFRONT PKWY BLDG 500
WICHITA, KS 67206-6619

Re: Temporary Abandonment
API 15-083-20348-00-00
LIPPOLDT E F 8
NE/4 Sec.14-23S-23W
Hodgeman County, Kansas

Dear David Van Dyke:

"Your temporary abandonment (TA) application for the well listed above has been approved. In accordance with K.A.R. 82-3-111 the TA status of this well will expire 05/06/2021.

- * If you return this well to service or plug it, please notify the District Office.
- * If you sell this well you are required to file a Transfer of Operator form, T-1.
- * If the well will remain temporarily abandoned, you must submit a new TA application, CP-111, before 05/06/2021.

You may contact me at the number above if you have questions.

Very truly yours,

Michael Maier"