

KANSAS CORPORATION COMMISSION
OIL & GAS CONSERVATION DIVISION

TEMPORARY ABANDONMENT WELL APPLICATION

OPERATOR: License# \_\_\_\_\_
Name: \_\_\_\_\_
Address 1: \_\_\_\_\_
Address 2: \_\_\_\_\_
City: \_\_\_\_\_ State: \_\_\_\_\_ Zip: \_\_\_\_\_ + \_\_\_\_\_
Contact Person: \_\_\_\_\_
Phone: ( \_\_\_\_\_ ) \_\_\_\_\_
Contact Person Email: \_\_\_\_\_
Field Contact Person: \_\_\_\_\_
Field Contact Person Phone: ( \_\_\_\_\_ ) \_\_\_\_\_

API No. 15- \_\_\_\_\_
Spot Description: \_\_\_\_\_
Sec. \_\_\_\_\_ Twp. \_\_\_\_\_ S. R. \_\_\_\_\_ E \_\_\_\_\_ W \_\_\_\_\_
feet from \_\_\_\_\_ N / \_\_\_\_\_ S Line of Section
feet from \_\_\_\_\_ E / \_\_\_\_\_ W Line of Section
GPS Location: Lat: \_\_\_\_\_, Long: \_\_\_\_\_
Datum: \_\_\_\_\_ NAD27 \_\_\_\_\_ NAD83 \_\_\_\_\_ WGS84
County: \_\_\_\_\_ Elevation: \_\_\_\_\_ GL \_\_\_\_\_ KB
Lease Name: \_\_\_\_\_ Well #: \_\_\_\_\_
Well Type: (check one) \_\_\_\_\_ Oil \_\_\_\_\_ Gas \_\_\_\_\_ OG \_\_\_\_\_ WSW \_\_\_\_\_ Other: \_\_\_\_\_
\_\_\_\_\_ SWD Permit #: \_\_\_\_\_ ENHR Permit #: \_\_\_\_\_
\_\_\_\_\_ Gas Storage Permit #: \_\_\_\_\_
Spud Date: \_\_\_\_\_ Date Shut-In: \_\_\_\_\_

Table with 7 columns: Conductor, Surface, Production, Intermediate, Liner, Tubing. Rows include Size, Setting Depth, Amount of Cement, Top of Cement, Bottom of Cement.

Casing Fluid Level from Surface: \_\_\_\_\_ How Determined? \_\_\_\_\_ Date: \_\_\_\_\_
Casing Squeeze(s): \_\_\_\_\_ to \_\_\_\_\_ w / \_\_\_\_\_ sacks of cement, \_\_\_\_\_ to \_\_\_\_\_ w / \_\_\_\_\_ sacks of cement. Date: \_\_\_\_\_
Do you have a valid Oil & Gas Lease? \_\_\_\_\_ Yes \_\_\_\_\_ No
Depth and Type: \_\_\_\_\_ Junk in Hole at \_\_\_\_\_ Tools in Hole at \_\_\_\_\_ Casing Leaks: \_\_\_\_\_ Yes \_\_\_\_\_ No Depth of casing leak(s): \_\_\_\_\_
Type Completion: \_\_\_\_\_ ALT. I \_\_\_\_\_ ALT. II Depth of: \_\_\_\_\_ DV Tool: \_\_\_\_\_ w / \_\_\_\_\_ sacks of cement \_\_\_\_\_ Port Collar: \_\_\_\_\_ w / \_\_\_\_\_ sack of cement
Packer Type: \_\_\_\_\_ Size: \_\_\_\_\_ Inch Set at: \_\_\_\_\_ Feet
Total Depth: \_\_\_\_\_ Plug Back Depth: \_\_\_\_\_ Plug Back Method: \_\_\_\_\_

Geological Data:

Table with 4 columns: Formation Name, Formation Top, Formation Base, Completion Information. Rows 1 and 2.

UNDER PENALTY OF PERJURY I HEREBY ATTEST THAT THE INFORMATION CONTAINED HEREIN IS TRUE AND CORRECT TO THE BEST OF MY KNOWLEDGE

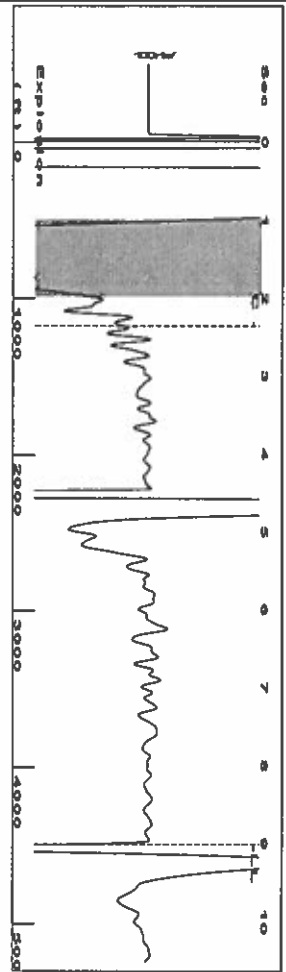
Submitted Electronically

Form with fields: Do NOT Write in This Space - KCC USE ONLY, Date Tested, Results, Date Plugged, Date Repaired, Date Put Back in Service, Review Completed by, Comments, TA Approved (Yes/No), Date.

Mail to the Appropriate KCC Conservation Office:

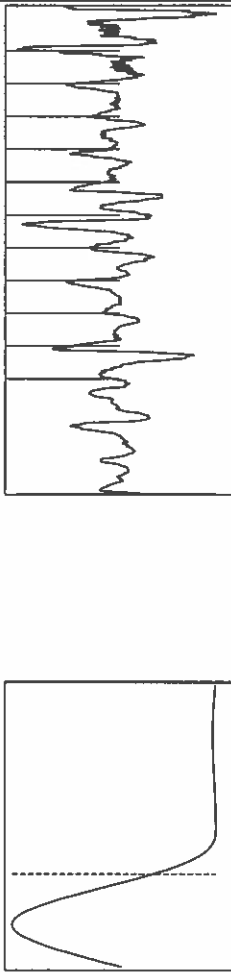
Table with 3 columns: District Office #, Address, Phone. Rows 1-4.

Group: Route 2 Well: river bend 8 (acquired on: 04/16/20 14:22:17)



Filter Type High Pass  
Manual Acoustic Velocity 43.452 ft/s  
Automatic Collar Count Yes  
Manual JTS/sec 14.881  
Time 9.005 sec  
Joints 141.635 Jts  
Depth 4489.83 ft

1.0 to 2.0 (Sec)



Analysis Method: Automatic

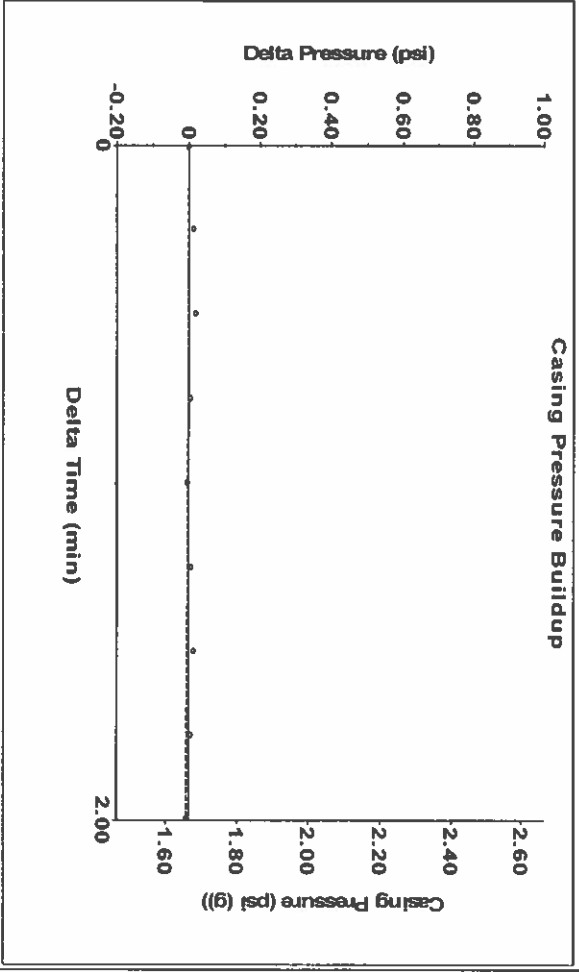
Group: Route 2 Well: river bend 8 (acquired on: 04/16/20 14:22:17)

Production	Potential	Casing Pressure	Producing
Oil -*- Water -*- Gas -*-	-*- BBL/D -*- BBL/D -*- Masc/D	1.7 psi (g) Casing Pressure Buildup -0.0 psi 2.00 min	Annular Gas Flow 0 Masc/D % Liquid 100 %
IPR Method PBHP/SBHP Production Efficiency 0.0	Vogel -*- 0.0	Gas/Liquid Interface Pressure 4.3 psi (g)	
Oil 40 deg API Water 1.05 Sp.Gr H2O Gas 0.99 Sp.Gr AIR		Liquid Level Depth 4489.83 ft Pump Intake Depth 4865.00 ft Formation Depth 4865.00 ft	Pump Intake 174.8 psi (g) Producing BHP 174.8 psi (g) Static BHP -*- psi (g)
Acoustic Velocity 997.185 ft/s			

Formation Submergence  
Total Gaseous Liquid Column HT (TVD) 375 ft  
Equivalent Gas Free Liquid HT (TVDD) 375 ft  
Acoustic Test

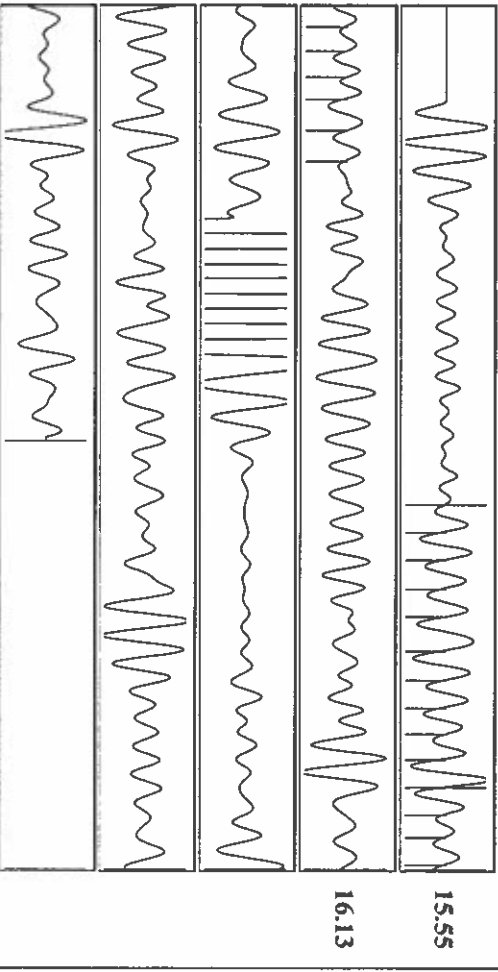


Group: Route 2 Well: river bend 8 (acquired on: 04/16/20 14:22:17)



Change in Pressure -0.01 psi  
Change in Time 2.00 min  
PT 6902  
Range 0 - ? psi

Group: Route 2 Well: river bend 8 (acquired on: 04/16/20 14:22:17)



Acoustic Velocity 997.185 ft/s  
Joints Per Second 15.7285 Jts/Sec  
Depth to Liquid level 4489.83 ft  
Automatic Collar Count Yes

Joints counted 19  
Joints to liquid level 141.635  
Filter Width 12.881  
Time to 1st Collar 1.152

Susan K. Duffy, Chair  
Shari Feist Albrecht, Commissioner  
Dwight D. Keen, Commissioner

Laura Kelly, Governor

May 13, 2020

Katherine McClurkan  
Merit Energy Company, LLC  
13727 Noel Road, Suite 1200  
Dallas, TX 75240

Re: Temporary Abandonment  
API 15-055-22514-01-00  
River Bend 8  
SE/4 Sec.34-24S-32W  
Finney County, Kansas

Dear Katherine McClurkan:

"Your temporary abandonment (TA) application for the well listed above has been approved. In accordance with K.A.R. 82-3-111 the TA status of this well will expire 05/13/2021.

- \* If you return this well to service or plug it, please notify the District Office.
- \* If you sell this well you are required to file a Transfer of Operator form, T-1.
- \* If the well will remain temporarily abandoned, you must submit a new TA application, CP-111, before 05/13/2021.

You may contact me at the number above if you have questions.

Very truly yours,

Michael Maier"