

KANSAS CORPORATION COMMISSION
OIL & GAS CONSERVATION DIVISION

TEMPORARY ABANDONMENT WELL APPLICATION

OPERATOR: License#
Name:
Address 1:
Address 2:
City: State: Zip:
Contact Person:
Phone:
Contact Person Email:
Field Contact Person:
Field Contact Person Phone:

API No. 15-
Spot Description:
Sec. Twp. S. R.
GPS Location: Lat: Long:
Datum: NAD27 NAD83 WGS84
County: Elevation:
Lease Name: Well #:
Well Type: Oil Gas OG WSW Other:
SWD Permit #: ENHR Permit #:
Gas Storage Permit #:
Spud Date: Date Shut-In:

Table with 7 columns: Conductor, Surface, Production, Intermediate, Liner, Tubing. Rows include Size, Setting Depth, Amount of Cement, Top of Cement, Bottom of Cement.

Casing Fluid Level from Surface: How Determined? Date:
Casing Squeeze(s): to w / sacks of cement, to w / sacks of cement. Date:
Do you have a valid Oil & Gas Lease? Yes No
Depth and Type: Junk in Hole at Tools in Hole at Casing Leaks: Yes No Depth of casing leak(s):
Type Completion: ALT. I ALT. II Depth of: DV Tool: w / sacks of cement Port Collar: w / sack of cement
Packer Type: Size: Inch Set at: Feet
Total Depth: Plug Back Depth: Plug Back Method:

Geological Data:

Table with 4 columns: Formation Name, Formation Top, Formation Base, Completion Information. Rows 1 and 2.

UNDER PENALTY OF PERJURY I HEREBY ATTEST THAT THE INFORMATION CONTAINED HEREIN IS TRUE AND CORRECT TO THE BEST OF MY KNOWLEDGE

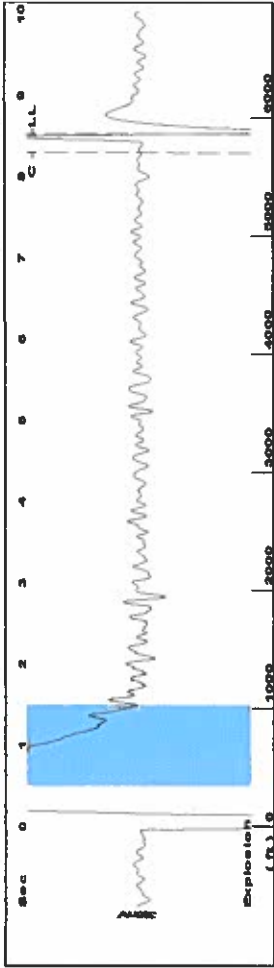
Submitted Electronically

Do NOT Write in This Space - KCC USE ONLY
Date Tested: Results: Date Plugged: Date Repaired: Date Put Back in Service:
Review Completed by: Comments:
TA Approved: Yes Denied Date:

Mail to the Appropriate KCC Conservation Office:

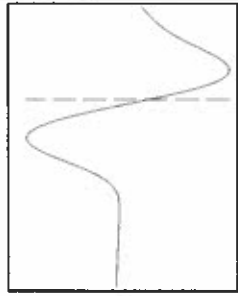
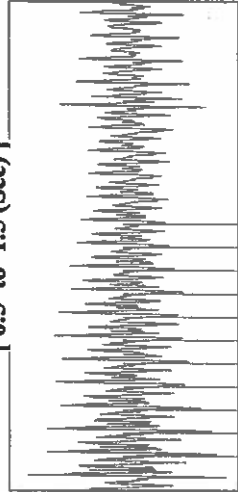
Table with 2 columns: Office Address, Phone. Rows for District Office #1, #2, #3, #4.

Group: TAD WELLS Well: MEREDITH JEANNE OWWO A-1 (acquired on: 04/29/20 09:44:21)



Filter Type High Pass Automatic Collar Count Yes Time 8.524 sec  
 Manual Acoustic Velo 1334.74 f/s Manual JTS/sec 21.0526 Joints 184.935 Jts  
 Depth 5862.43 ft

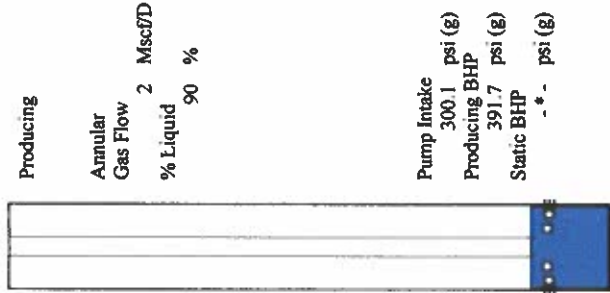
[ 0.5 to 1.5 (Sec) ]



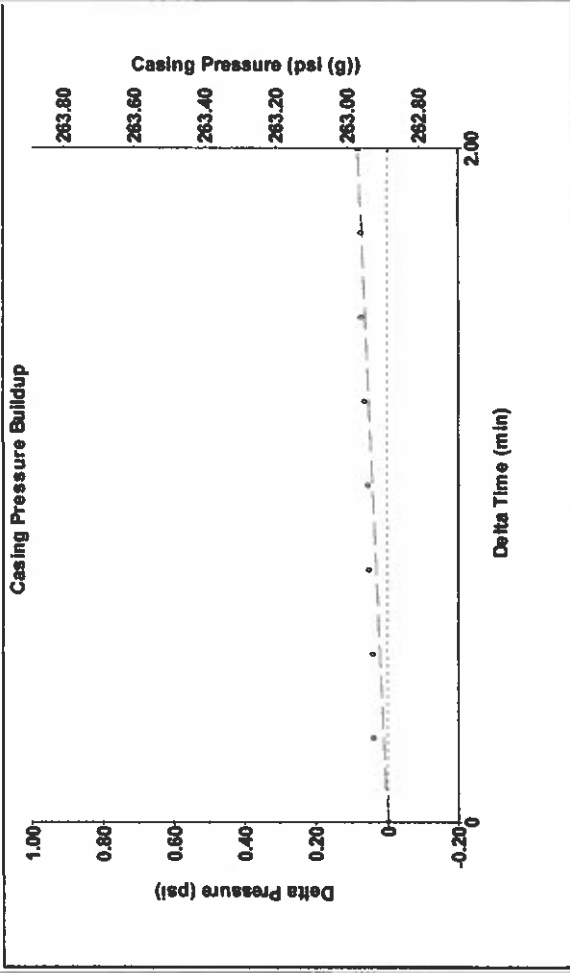
**Analysis Method: Automatic**

Group: TAD WELLS Well: MEREDITH JEANNE OWWO A-1 (acquired on: 04/29/20 09:44:21)

Production	Potential	Casing Pressure	262.9 psi (g)
Oil - * -	- * - BBL/D	Casing Pressure Buildup	0.082 psi
Water - * -	- * - BBL/D	2.00 min	
Gas - * -	- * - Mscf/D	Gas/Liquid Interface Pressure	300.1 psi (g)
IPR Method	Vogel	Liquid Level Depth	5862.43 ft
PBHP/SBHP	- * -	Pump Intake Depth	5860.00 ft
Production Efficiency	0.0	Formation Depth	6085.00 ft
Oil 40 deg API			
Water 1.05 Sp.Gr H2O			
Gas 0.62 Sp.Gr AIR			
Acoustic Velocity	1375.51 f/s		
Formation Submergence	- * - ft		
Total Gaseous Liquid Column HT (TVDD)	- * - ft		
Equivalent Gas Free Liquid HT (TVDD)	- * - ft		
Acoustic Test			

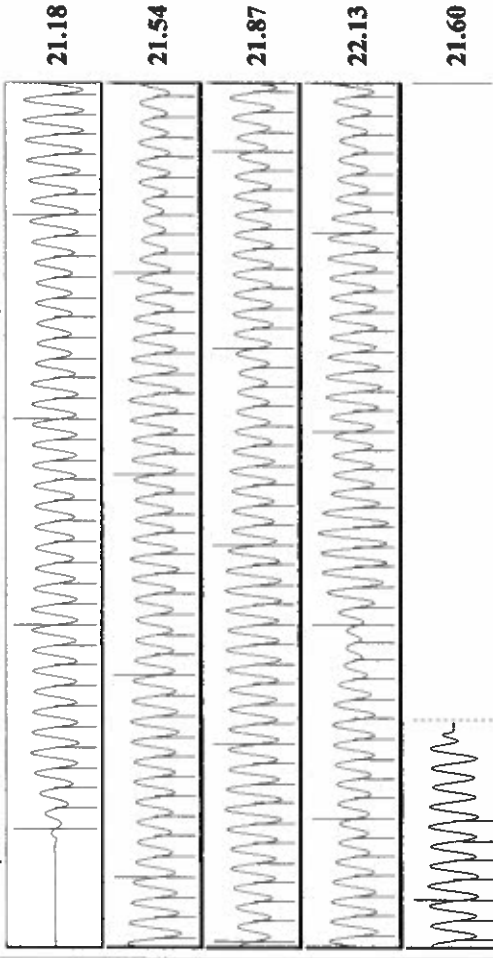


Group: TAD WELLS Well: MEREDITH JEANNE OWWO A-1 (acquired on: 04/29/20 09:44:21)



Change in Pressure 0.08 psi PT10857 Range  
 Change in Time 2.00 min

Group: TAD WELLS Well: MEREDITH JEANNE OWWO A-1 (acquired on: 04/29/20 09:44:21)



Acoustic Velocity 1375.51 f/s Joints counted 174  
 Joints Per Second 21.6958 Jts/sec 184.935  
 Depth to liquid level 5862.43 ft 19.0526  
 Automatic Collar Count Yes Time to 1st Collar 8.292

May 13, 2020

Katherine McClurkan  
Merit Energy Company, LLC  
13727 Noel Road, Suite 1200  
Dallas, TX 75240

Re: Temporary Abandonment  
API 15-129-21355-00-01  
Meredithe Jeanne OWWO 1  
SW/4 Sec.31-31S-39W  
Morton County, Kansas

Dear Katherine McClurkan:

"Your temporary abandonment (TA) application for the well listed above has been approved. In accordance with K.A.R. 82-3-111 the TA status of this well will expire 05/13/2021.

- \* If you return this well to service or plug it, please notify the District Office.
- \* If you sell this well you are required to file a Transfer of Operator form, T-1.
- \* If the well will remain temporarily abandoned, you must submit a new TA application, CP-111, before 05/13/2021.

You may contact me at the number above if you have questions.

Very truly yours,

Michael Maier"