

KANSAS CORPORATION COMMISSION
OIL & GAS CONSERVATION DIVISION

TEMPORARY ABANDONMENT WELL APPLICATION

OPERATOR: License#
Name:
Address 1:
Address 2:
City: State: Zip:
Contact Person:
Phone:
Contact Person Email:
Field Contact Person:
Field Contact Person Phone:

API No. 15-
Spot Description:
Sec. Twp. S. R.
GPS Location: Lat, Long
Datum: NAD27, NAD83, WGS84
County: Elevation:
Lease Name: Well #:
Well Type: Oil, Gas, OG, WSW, Other
SWD Permit #: ENHR Permit #:
Gas Storage Permit #:
Spud Date: Date Shut-In:

Table with 7 columns: Conductor, Surface, Production, Intermediate, Liner, Tubing. Rows include Size, Setting Depth, Amount of Cement, Top of Cement, Bottom of Cement.

Casing Fluid Level from Surface: How Determined? Date:
Casing Squeeze(s): to w / sacks of cement, to w / sacks of cement. Date:
Do you have a valid Oil & Gas Lease? Yes No
Depth and Type: Junk in Hole at Tools in Hole at Casing Leaks: Yes No Depth of casing leak(s):
Type Completion: ALT. I ALT. II Depth of: DV Tool: w / sacks of cement Port Collar: w / sack of cement
Packer Type: Size: Inch Set at: Feet
Total Depth: Plug Back Depth: Plug Back Method:

Geological Date:

Table with 4 columns: Formation Name, Formation Top, Formation Base, Completion Information. Rows 1 and 2.

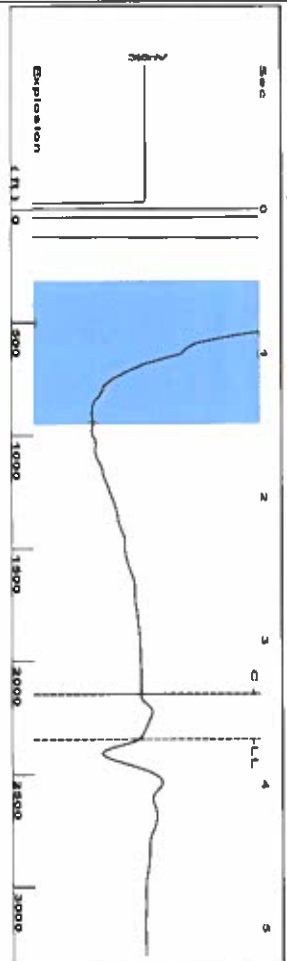
UNDER PENALTY OF PERJURY I HEREBY ATTEST THAT THE INFORMATION CONTAINED HEREIN IS TRUE AND CORRECT TO THE BEST OF MY KNOWLEDGE

Submitted Electronically

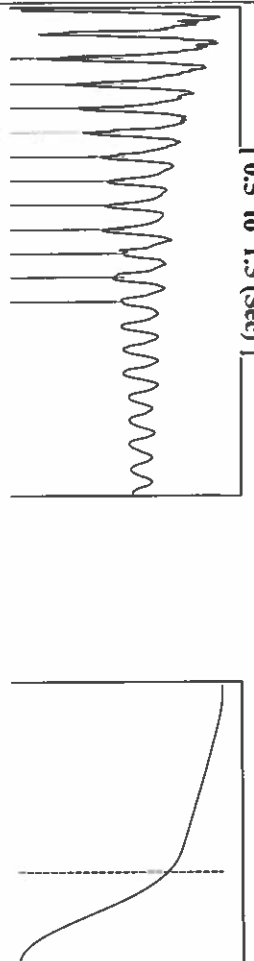
Do NOT Write in This Space - KCC USE ONLY
Date Tested: Results: Date Plugged: Date Repaired: Date Put Back in Service:
Review Completed by: Comments:
TA Approved: Yes Denied Date:

Mail to the Appropriate KCC Conservation Office:

Table with 3 columns: District Office #, Address, Phone. Rows 1-4.

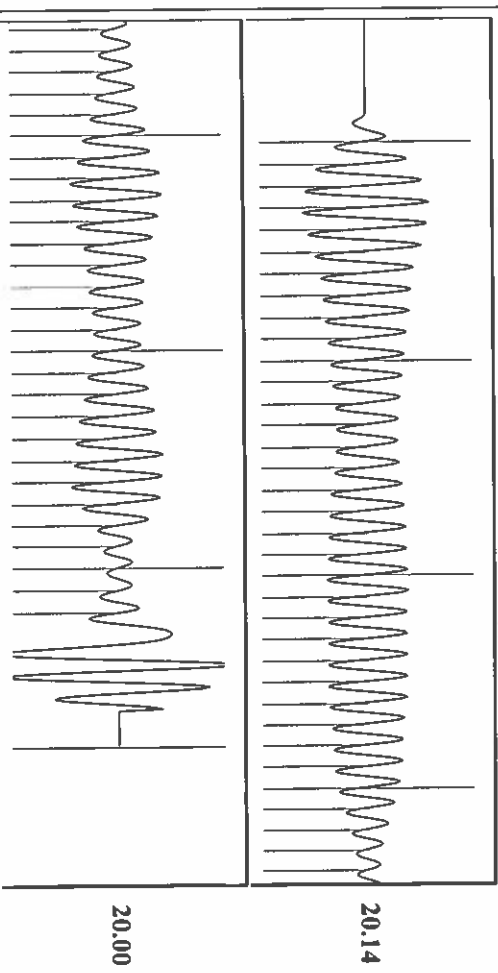
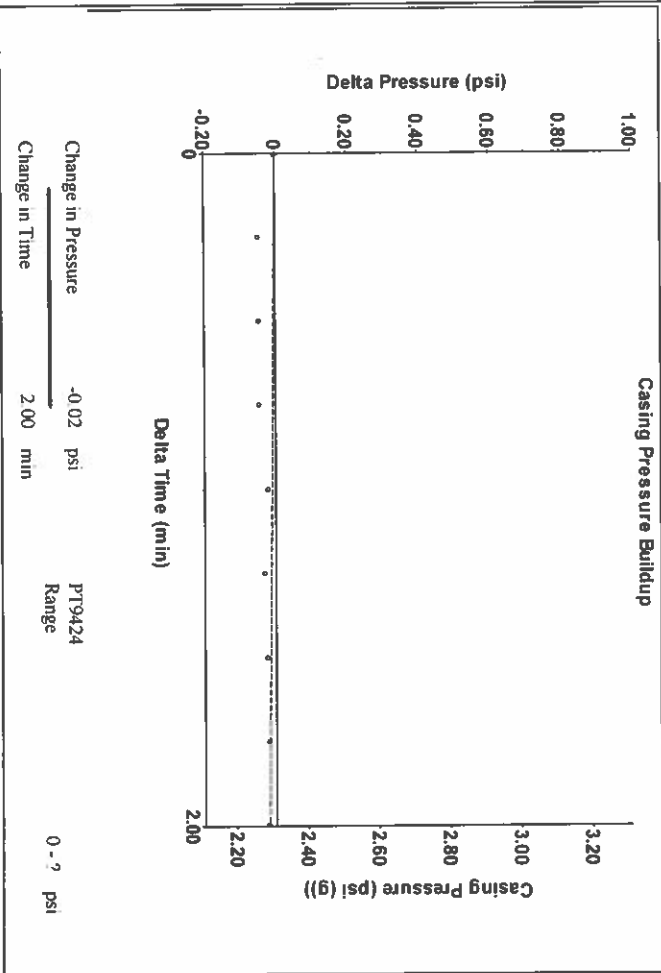


Filter Type High Pass Automatic Collar Count Yes
 Manual Acoustic Velocity 1268 f/s Manual JTS/sec 20
 Time 3.686 sec
 Joints 74.0065 J/s
 Depth 2346.01 ft



Analysis Method: Automatic

| Production | Potential | Casing Pressure | Producing |
|---------------------------|-------------|---------------------------------------------|----------------------------|
| Current | Oil - * - | 2.3 psi (g) | Annular Gas Flow 0 Mcscf/D |
| Oil - * - | Water - * - | Casing Pressure Buildup -0.021 psi | % Liquid 100 % |
| Water - * - | Gas - * - | 2.00 min | |
| Gas - * - | | Cas/Liquid Interface Pressure 3.3 psi (g) | |
| IPR Method Vogel | | Liquid Level Depth 2346.01 ft | |
| PBHP/SBHP - * - | | Pump Intake Depth 3362.00 ft | |
| Production Efficiency 0.0 | | Formation Depth 3262.00 ft | |
| | | Acoustic Velocity 1272.93 f/s | |
| | | Oil 40 deg API | |
| | | Water 1.05 Sp.Gr.H2O | |
| | | Gas 0.73 Sp.Gr.AIR | |
| | | Formation Submergence | |
| | | Total Gaseous Liquid Column HT (TVD) 916 ft | |
| | | Equivalent Gas Free Liquid HT (TVD) 916 ft | |
| | | Acoustic Test | |



| | | | |
|------------------------|-----------------|------------------------|---------|
| Acoustic Velocity | 1272.93 f/s | Joints counted | 62 |
| Joints Per Second | 20.0777 JTS/sec | Joints to liquid level | 74.0065 |
| Depth to liquid level | 2346.01 ft | Filter Width | 18 |
| Automatic Collar Count | Yes | Time to 1st Collar | 0.284 |

Susan K. Duffy, Chair
Shari Feist Albrecht, Commissioner
Dwight D. Keen, Commissioner

Laura Kelly, Governor

May 13, 2020

Katherine McClurkan
Merit Energy Company, LLC
13727 Noel Road, Suite 1200
Dallas, TX 75240-7362

Re: Temporary Abandonment
API 15-129-10075-00-00
Stoops 1-19
SW/4 Sec.19-32S-42W
Morton County, Kansas

Dear Katherine McClurkan:

"Your temporary abandonment (TA) application for the well listed above has been approved. In accordance with K.A.R. 82-3-111 the TA status of this well will expire 05/13/2021.

- * If you return this well to service or plug it, please notify the District Office.
- * If you sell this well you are required to file a Transfer of Operator form, T-1.
- * If the well will remain temporarily abandoned, you must submit a new TA application, CP-111, before 05/13/2021.

You may contact me at the number above if you have questions.

Very truly yours,

Michael Maier"