

KANSAS CORPORATION COMMISSION
OIL & GAS CONSERVATION DIVISION

TEMPORARY ABANDONMENT WELL APPLICATION

OPERATOR: License#
Name:
Address 1:
Address 2:
City: State: Zip:
Contact Person:
Phone:
Contact Person Email:
Field Contact Person:
Field Contact Person Phone:

API No. 15-
Spot Description:
Sec. Twp. S. R.
feet from N / S Line of Section
feet from E / W Line of Section
GPS Location: Lat: , Long:
Datum: NAD27 NAD83 WGS84
County: Elevation: GL KB
Lease Name: Well #:
Well Type: Oil Gas OG WSW Other:
SWD Permit #: ENHR Permit #:
Gas Storage Permit #:
Spud Date: Date Shut-In:

Table with 7 columns: Conductor, Surface, Production, Intermediate, Liner, Tubing. Rows include Size, Setting Depth, Amount of Cement, Top of Cement, Bottom of Cement.

Casing Fluid Level from Surface: How Determined? Date:
Casing Squeeze(s): to w / sacks of cement, to w / sacks of cement. Date:
Do you have a valid Oil & Gas Lease? Yes No
Depth and Type: Junk in Hole at Tools in Hole at Casing Leaks: Yes No Depth of casing leak(s):
Type Completion: ALT. I ALT. II Depth of: DV Tool: w / sacks of cement Port Collar: w / sack of cement
Packer Type: Size: Inch Set at: Feet
Total Depth: Plug Back Depth: Plug Back Method:

Geological Data:

Table with 4 columns: Formation Name, Formation Top, Formation Base, Completion Information. Rows 1 and 2.

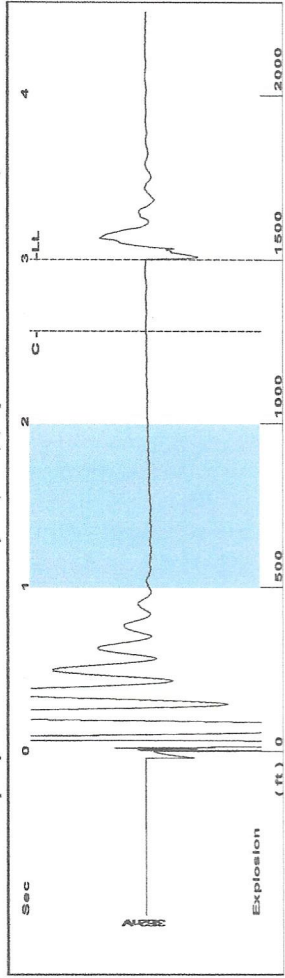
UNDER PENALTY OF PERJURY I HEREBY ATTEST THAT THE INFORMATION CONTAINED HEREIN IS TRUE AND CORRECT TO THE BEST OF MY KNOWLEDGE

Submitted Electronically

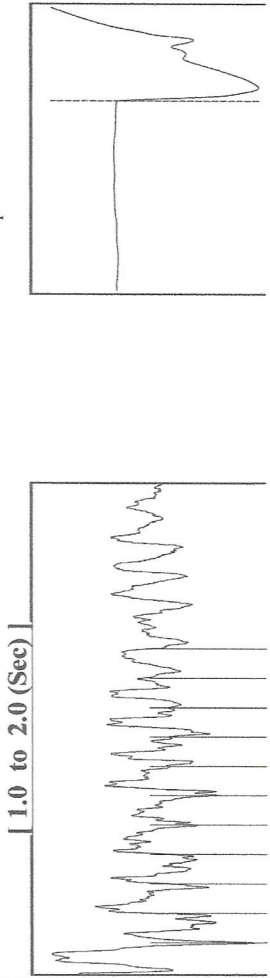
Do NOT Write in This Space - KCC USE ONLY
Date Tested: Results: Date Plugged: Date Repaired: Date Put Back in Service:
Review Completed by: Comments:
TA Approved: Yes Denied Date:

Mail to the Appropriate KCC Conservation Office:

Table with 2 columns: Office Address, Phone. Rows for District Office #1, #2, #3, #4.



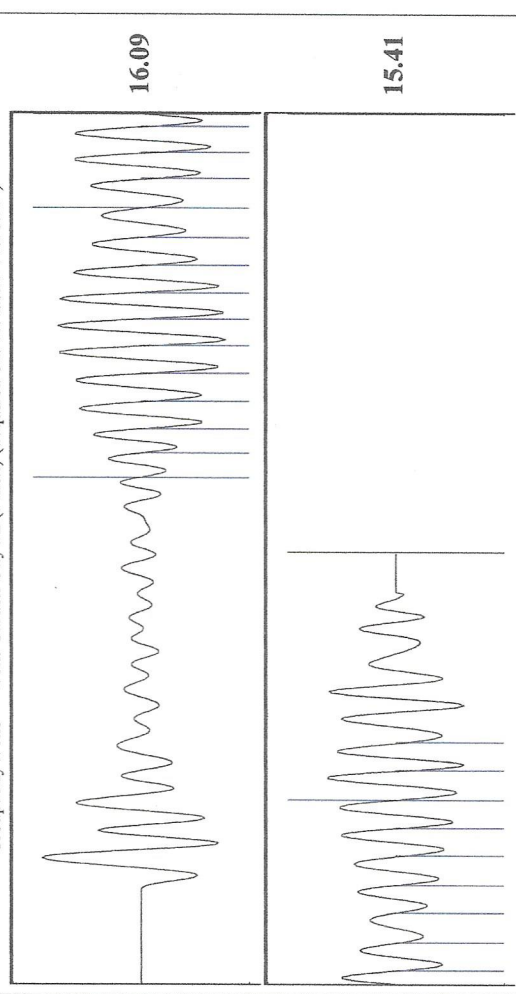
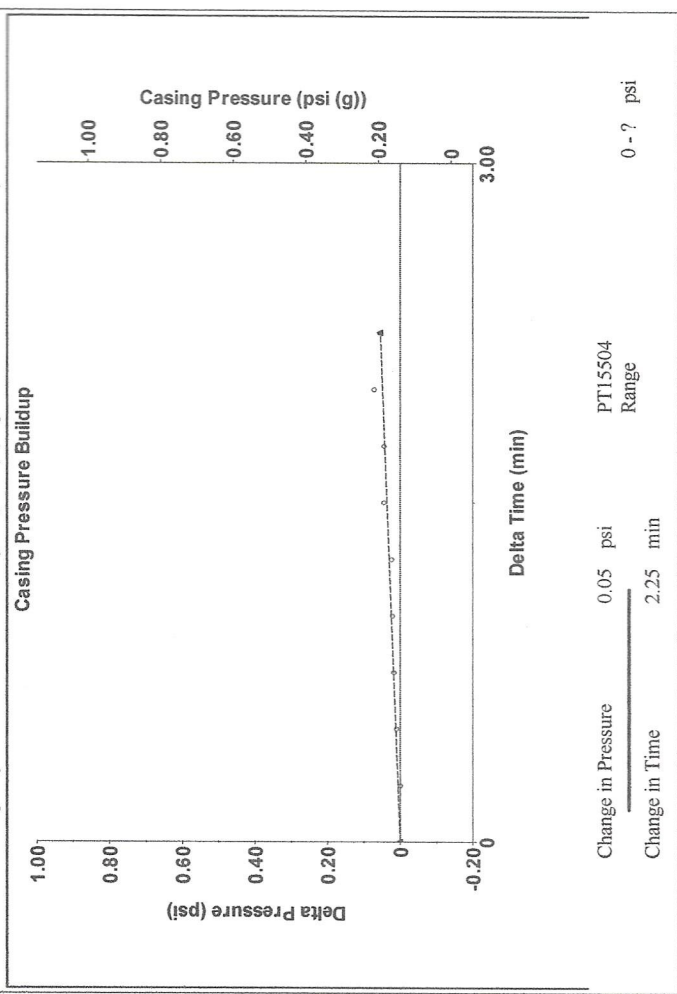
Filter Type High Pass
Manual Acoustic Veloc 058.43 ft/s
Automatic Collar Count Yes
Manual JTS/sec 16.6945



Analysis Method: Automatic

Production	Potential	Casing Pressure	Producing
Oil 0	- * - BBL/D	0.1 psi (g)	Annular
Water 0	- * - BBL/D	Casing Pressure Buildup	Gas Flow - * - Mscf/D
Gas 0.0	- * - Mscf/D	0.054 psi	% Liquid 100 %
IPR Method	Vogel	Gas/Liquid Interface Pressure	Pump Intake
PBHP/SBHP	- * -	0.9 psi (g)	- * - psi (g)
Production Efficiency	0.0	Liquid Level Depth	Producing BHP
Oil 39 deg.API		1500.51 ft	1339.2 psi (g)
Water 1.05 Sp.Gr.H2O		Pump Intake Depth	Static BHP
Gas 0.97 Sp.Gr.AIR		- * - ft	1317.6 psi (g)
Acoustic Velocity	1002.01 ft/s	Formation Depth	
		4444.00 ft	

Formation Submergence 2943 ft
Total Gaseous Liquid Column HT (TVD) 2943 ft
Equivalent Gas Free Liquid HT (TVD)



Acoustic Velocity 1002.01 ft/s
Joints Per Second 15.8046 jts/sec
Depth to liquid level 1500.51 ft
Automatic Collar Count Yes
Joints counted 22
Joints to liquid level 47.3348
Filter Width 14.6945
Time to 1st Collar 1.164

May 21, 2020

Kent Strube
Hartman Oil Co., Inc.
10500 E BERKELEY SQ PKWY STE 100
WICHITA, KS 67206-6816

Re: Temporary Abandonment
API 15-055-20033-00-00
GARDEN CITY B 2-8
NW/4 Sec.08-22S-33W
Finney County, Kansas

Dear Kent Strube:

"Your temporary abandonment (TA) application for the well listed above has been approved. In accordance with K.A.R. 82-3-111 the TA status of this well will expire 05/21/2021.

- * If you return this well to service or plug it, please notify the District Office.
- * If you sell this well you are required to file a Transfer of Operator form, T-1.
- * If the well will remain temporarily abandoned, you must submit a new TA application, CP-111, before 05/21/2021.

You may contact me at the number above if you have questions.

Very truly yours,

Michael Maier"