

KANSAS CORPORATION COMMISSION
OIL & GAS CONSERVATION DIVISION

TEMPORARY ABANDONMENT WELL APPLICATION

OPERATOR: License#
Name:
Address 1:
Address 2:
City: State: Zip:
Contact Person:
Phone:
Contact Person Email:
Field Contact Person:
Field Contact Person Phone:

API No. 15-
Spot Description:
Sec. Twp. S. R.
GPS Location: Lat: Long:
Datum:
County: Elevation:
Lease Name: Well #:
Well Type:
SWD Permit #: ENHR Permit #:
Gas Storage Permit #:
Spud Date: Date Shut-In:

Table with 7 columns: Conductor, Surface, Production, Intermediate, Liner, Tubing. Rows include Size, Setting Depth, Amount of Cement, Top of Cement, Bottom of Cement.

Casing Fluid Level from Surface: How Determined? Date:
Casing Squeeze(s): to w / sacks of cement, to w / sacks of cement. Date:
Do you have a valid Oil & Gas Lease? Yes No
Depth and Type: Junk in Hole at Tools in Hole at Casing Leaks: Yes No Depth of casing leak(s):
Type Completion: ALT. I ALT. II Depth of: DV Tool: w / sacks of cement Port Collar: w / sack of cement
Packer Type: Size: Inch Set at: Feet
Total Depth: Plug Back Depth: Plug Back Method:

Geological Data:

Table with 4 columns: Formation Name, Formation Top, Formation Base, Completion Information. Rows 1 and 2.

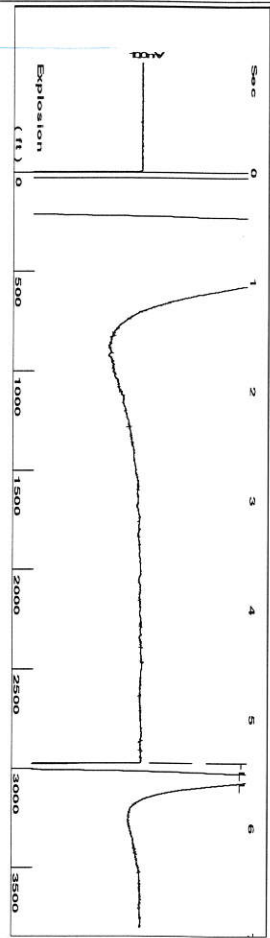
UNDER PENALTY OF PERJURY I HEREBY ATTEST THAT THE INFORMATION CONTAINED HEREIN IS TRUE AND CORRECT TO THE BEST OF MY KNOWLEDGE

Submitted Electronically

Do NOT Write in This Space - KCC USE ONLY
Date Tested: Results: Date Plugged: Date Repaired: Date Put Back in Service:
Review Completed by: Comments:
TA Approved: Yes Denied Date:

Mail to the Appropriate KCC Conservation Office:

Table with 2 columns: Office Address, Phone. Rows for District Office #1, #2, #3, #4.



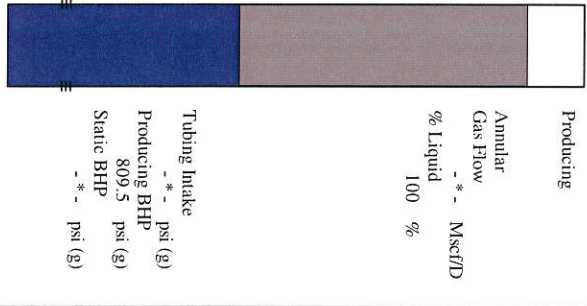
Time 5.403 sec
 Joints 93.7429 Jts
 Depth 2971.65 ft

Liquid level calculated with
 user supplied Acoustic Velocity
 Acoustic Velocity 1100 ft/s

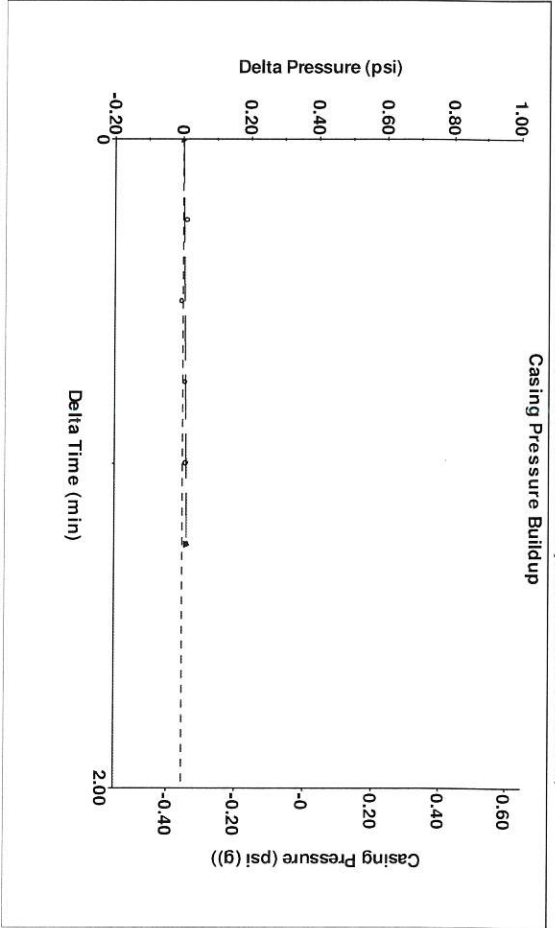
Analysis Method: Acoustic Velocity

Group: Landmark Well: Beason Unit A cased hole (acquired on: 06/14/16 15:40:10)

Production	Current	Potential	Casing Pressure	Producing
Oil	-*-	-*-	-0.4 psi (g)	Annular
Water	-*-	-*-	BBL/D Casing Pressure Buildup	Gas Flow
Gas	-*-	-*-	0.0 psi	% Liquid
			1.25 min	100 %
IPR Method		Vogel	Gas/Liquid Interface Pressure	
PBHP/SBHP		-*-	1.0 psi (g)	
Production Efficiency		0.0		
Oil	40 deg API		Liquid Level Depth	
Water	1.05 Sp.Gr:H2O		2971.65 ft	
Gas	0.90 Sp.Gr:AIR		Tubing Intake Depth	
Acoustic Velocity	1100 ft/s		-*- ft	
			Formation Depth	
			4750.00 ft	



Tubing Intake -*- psi (g)
 Producing BHP 809.5 psi (g)
 Static BHP -*- psi (g)



Change in Pressure 0.01 psi
 Change in Time 1.25 min

PTI1179 Range 0 - ? psi

May 27, 2020

Jeff Wood
Landmark Resources, Inc.
4900 WOODWAY DR SUITE 880
HOUSTON, TX 77056-1881

Re: Temporary Abandonment
API 15-171-21052-00-00
BEESON UNIT A 1- 1
NE/4 Sec.01-17S-34W
Scott County, Kansas

Dear Jeff Wood :

"Your temporary abandonment (TA) application for the well listed above has been approved. In accordance with K.A.R. 82-3-111 the TA status of this well will expire 05/27/2021.

- * If you return this well to service or plug it, please notify the District Office.
- * If you sell this well you are required to file a Transfer of Operator form, T-1.
- * If the well will remain temporarily abandoned, you must submit a new TA application, CP-111, before 05/27/2021.

You may contact me at the number above if you have questions.

Very truly yours,

Michael Maier"