

KANSAS CORPORATION COMMISSION
OIL & GAS CONSERVATION DIVISION

TEMPORARY ABANDONMENT WELL APPLICATION

OPERATOR: License#
Name:
Address 1:
Address 2:
City: State: Zip:
Contact Person:
Phone:
Contact Person Email:
Field Contact Person:
Field Contact Person Phone:

API No. 15-
Spot Description:
Sec. Twp. S. R.
GPS Location: Lat: Long:
Datum: NAD27 NAD83 WGS84
County: Elevation:
Lease Name: Well #:
Well Type: Oil Gas OG WSW Other:
SWD Permit #: ENHR Permit #:
Gas Storage Permit #:
Spud Date: Date Shut-In:

Table with 7 columns: Conductor, Surface, Production, Intermediate, Liner, Tubing. Rows include Size, Setting Depth, Amount of Cement, Top of Cement, Bottom of Cement.

Casing Fluid Level from Surface: How Determined? Date:
Casing Squeeze(s): to w / sacks of cement, to w / sacks of cement. Date:
Do you have a valid Oil & Gas Lease? Yes No
Depth and Type: Junk in Hole at Tools in Hole at Casing Leaks: Yes No Depth of casing leak(s):
Type Completion: ALT. I ALT. II Depth of: DV Tool: w / sacks of cement Port Collar: w / sack of cement
Packer Type: Size: Inch Set at: Feet
Total Depth: Plug Back Depth: Plug Back Method:

Geological Data:

Table with 4 columns: Formation Name, Formation Top, Formation Base, Completion Information. Rows 1 and 2.

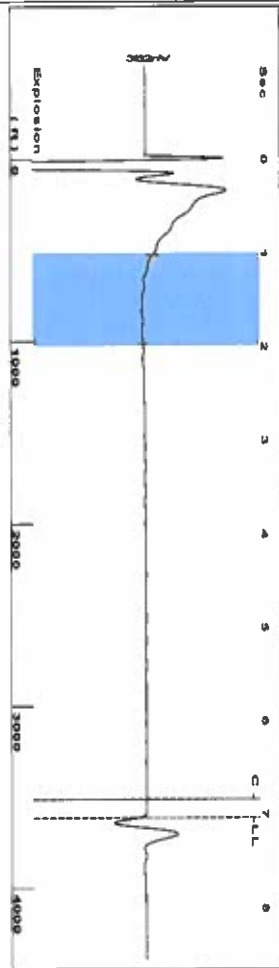
UNDER PENALTY OF PERJURY I HEREBY ATTEST THAT THE INFORMATION CONTAINED HEREIN IS TRUE AND CORRECT TO THE BEST OF MY KNOWLEDGE

Submitted Electronically

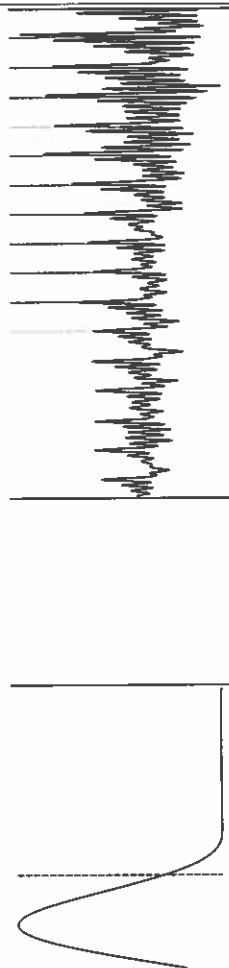
Do NOT Write in This Space - KCC USE ONLY
Date Tested: Results: Date Plugged: Date Repaired: Date Put Back in Service:
Review Completed by: Comments:
TA Approved: Yes Denied Date:

Mail to the Appropriate KCC Conservation Office:

Table with 3 columns: District Office #, Address, Phone. Rows 1-4.



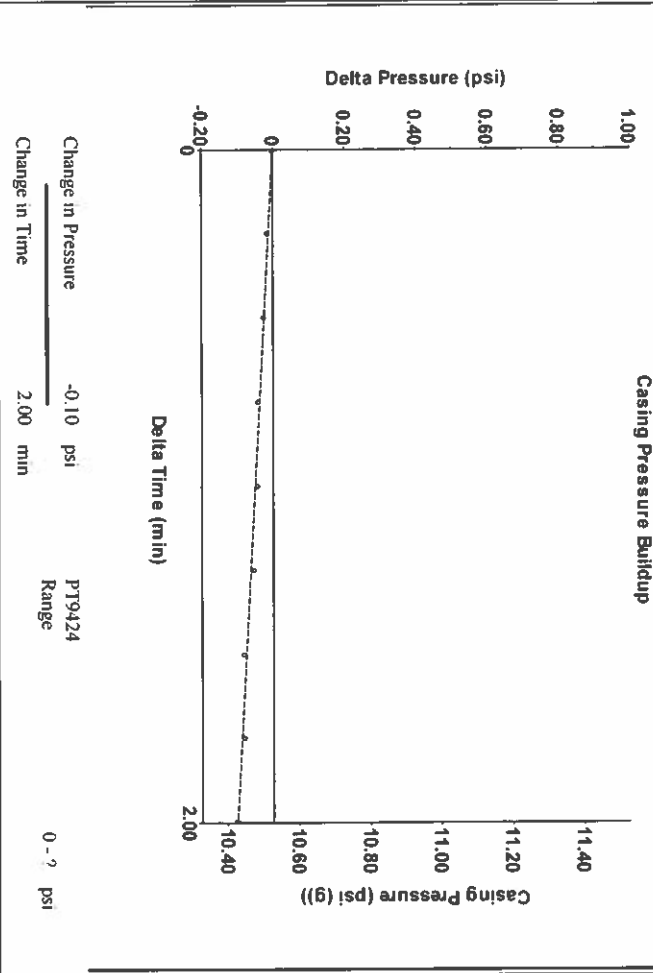
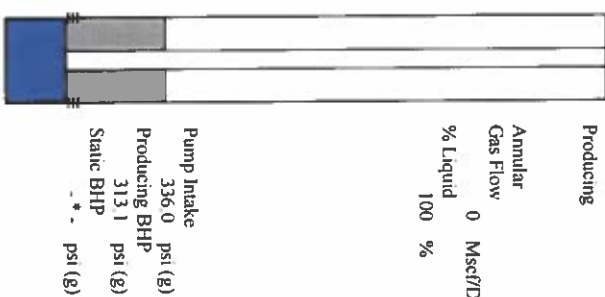
Filter Type High Pass Automatic Collar Count Yes
 Manual Acoustic Velocity: 1029.9 ft/s Manual JTS/sec 16.6113
 Time 7.037 sec
 Joints 116.712 Jts
 Depth 3618.08 ft



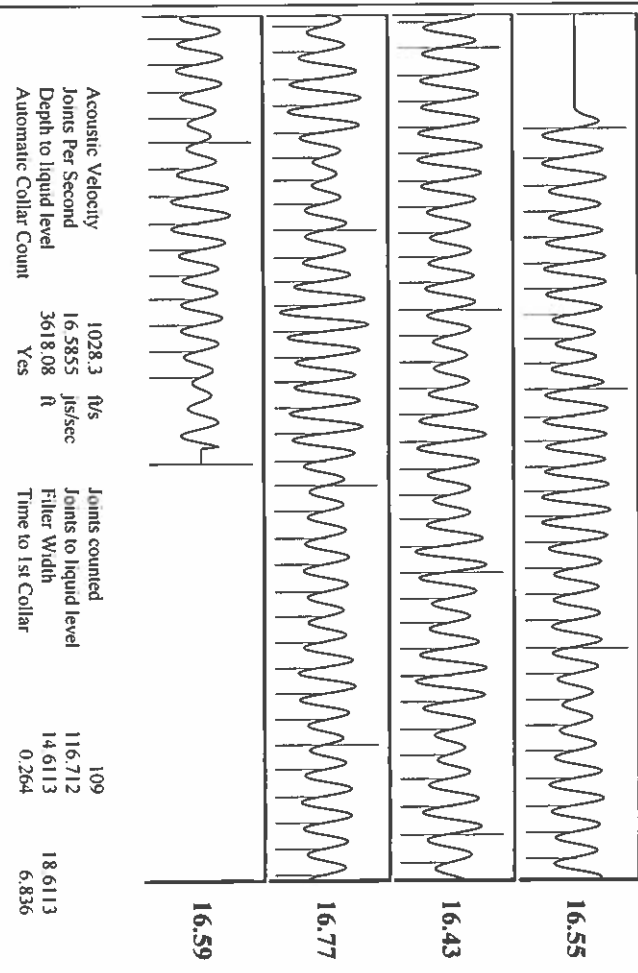
Analysis Method: Automatic

Group: TAD WELLS Well: WILLIAMS D-2 (acquired on: 05/14/20 12:58:22)

Production	Potential	Casing Pressure	Producing
Oil -*-	-*- BBL/D	10.5 psi (g)	0 Mscf/D
Water -*-	-*- BBL/D	Casing Pressure Buildup	% Liquid
Gas -*-	-*- Mscf/D	-0.101 psi	100 %
		2.00 min	
IPR Method	Vogel	Gas/Liquid Interface Pressure	
PBHP/SBHP	-*-	13.6 psi (g)	
Production Efficiency	0.0		
		Liquid Level Depth	
Oil 40 deg API		3618.08 ft	
Water 1.05 Sp.Gr.H2O		Pump Intake Depth	
Gas 0.95 Sp.Gr.AIR		4570.00 ft	
Acoustic Velocity		Formation Depth	
		4501.00 ft	
Formation Submergence			
Total Gaseous Liquid Column HT (TVD)			
Equivalent Gas Free Liquid HT (TVD)			
Acoustic Test			



Group: TAD WELLS Well: WILLIAMS D-2 (acquired on: 05/14/20 12:58:22)



Acoustic Velocity 1028.3 ft/s
 Joints Per Second 16.5855 Jts/sec
 Depth to liquid level 3618.08 ft
 Automatic Collar Count Yes

Joints counted 109
 Joints to liquid level 116.712
 Filter Width 14.6113
 Time to 1st Collar 0.264

May 28, 2020

Katherine McClurkan
Merit Energy Company, LLC
13727 Noel Road, Suite 1200
Dallas, TX 75240-7362

Re: Temporary Abandonment
API 15-129-20581-00-00
Williams D 2
NW/4 Sec.19-33S-42W
Morton County, Kansas

Dear Katherine McClurkan:

"Your temporary abandonment (TA) application for the well listed above has been approved. In accordance with K.A.R. 82-3-111 the TA status of this well will expire 05/28/2021.

- * If you return this well to service or plug it, please notify the District Office.
- * If you sell this well you are required to file a Transfer of Operator form, T-1.
- * If the well will remain temporarily abandoned, you must submit a new TA application, CP-111, before 05/28/2021.

You may contact me at the number above if you have questions.

Very truly yours,

Michael Maier"