



Home
(785) 798-2400

Andrew Stenzel Geologist

Ness City, Kansas



Call
(785) 798-5977

Scale 1:240 (5"=100') Imperial
Measured Depth Log

Well Name: Uehling-Schwien #1
Well Id:

Location: SW-NW-NW-NE Sec 11-20S-22W (Ness County)

License Number: 15-135-25992

Spud Date: 2/12/18

Surface Coordinates: 587' FNL& 2477' FEL

Region: KANSAS

Drilling Completed: 2/21/18

Bottom Hole

Coordinates:

Ground Elevation (ft): 2235

Logged Interval (ft): 3600

To: TD

K.B. Elevation (ft): 2240

Total Depth (ft): 4545

Formation: MISSISSIPPI

Type of Drilling Fluid: Mud-Co Chemical

Printed by WellSight LogViewer from WellSight Systems 1-800-447-1534 www.WellSight.com

OPERATOR

Company: Palomino Petroleum, Inc.

Address: 4924 SE 84th St.
Newton, KS 67114

GEOLOGIST

Name: Andrew Stenzel

Company: Petroleum Geologist

Address: 501 S. Franklin
Ness City, KS 67560

Drilling Report

DAILY DRILLING REPORT:

2/12/18 MIRU, ran surface casing
2/13/18 Drilling @ 450'
2/14/18 Drilling @ 2430'
2/15/18 Drilling @ 3080'
2/16/18 Drilling @ 3768'
2/17/18 Drilling @ 4090'
2/18/18 DST #1, DST #2
2/19/18 DST #3, DST #4
2/20/18 DST #5
2/21/18 Ran electric logs, ran 5 1/2" casing



TRIOBITE TESTING, INC.

DRILL STEM TEST REPORT

Palomino Petroleum, Inc.

11-20S-22W Ness,KS

4924 SE 84th St
Newton KS 67114+8827

Uehling-Schwien #1

Job Ticket: 63547

DST#: 1

ATTN: Andrew Stenzel

Test Start: 2018.02.18 @ 00:37:00

GENERAL INFORMATION:

Formation: Ft. Scott

Deviated: No Whipstack

Time Tool Opened: 04:24:45

Time Test Ended: 08:16:15

ft (KB)

Test Type: Conventional Bottom Hole (Initial)

Tester: Spencer J. Staab

Unit No: 84



TRILOBITE TESTING, INC

Palomino Petroleum, Inc.
4924 SE 84th St
Newton KS 67114+8827
ATTN: Andrew Stenzel

11-20S-22W Ness,KS
Uehling-Schwien #1
Job Ticket: 63547 DST#:1
Test Start: 2018.02.18 @ 00:37:00

GENERAL INFORMATION:

Formation: Ft. Scott
Deviated: No Whipstock: ft (KB)
Time Tool Opened: 04:24:45
Time Test Ended: 08:16:15
Interval: 4277.00 ft (KB) To 4326.00 ft (KB) (TVD)
Total Depth: 4326.00 ft (KB) (TVD)
Hole Diameter: 7.88 inchest-hole Condition: Fair

Test Type: Conventional Bottom Hole (Initial)
Tester: Spencer J. Staab
Unit No: 84

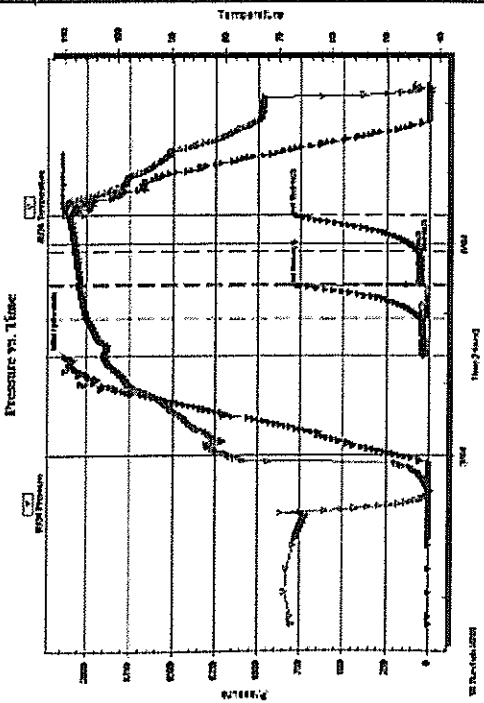
Reference Elevations: 2240.00 ft (KB)
2235.00 ft (CF)
5.00 ft
KB to GR/CF:

Serial #: 8934 Inside

Press@RunDepth: 53.88 psig @ 4281.00 ft (KB)
Start Date: 2018.02.18 End Date: 2018.02.18
Start Time: 00:37:15 End Time: 08:16:15

Capacity: 8000.00 psig
Last Calib.: 2018.02.18
Time On Blrm: 2018.02.18 @ 04:24:30
Time Off Blrm: 2018.02.18 @ 06:25:30

TEST COMMENT: 30-FF-Fair Blow; Built to 6"
30-ISH-No Return
30-FF-Strong Blow; BOB in 20 mins
30-FSH-No Return



PRESSURE SUMMARY

Time (Min.)	Pressure (psig)	Temp (deg F)	Annotation
0	2129.35	102.59	Initial Hydro-static
1	19.83	101.88	Open To Flow (1)
32	37.80	105.49	Shut-In(1)
60	766.18	107.07	End Shut-In(1)
61	38.33	106.88	Open To Flow(2)
90	53.68	107.71	Shut-In(2)
120	776.07	108.86	End Shut-In(2)
121	2078.65	109.60	Final Hydro-static

Recovery

Length (ft)	Description	Volume (bbl)
60.00	GOCM 10%G 20%O 70%M	0.30
20.00	SOCM 7%O 93%M	0.10

Gas Rates

Choke (inches)	Pressure (psig)	Gas Rate (Mcf/d)

Trilobite Testing, Inc

Ref. No: 63547

Printed: 2018.02.21 @ 15:53:57



TRILOBITE TESTING, INC

Palomino Petroleum, Inc.
4924 SE 84th St
Newton KS 67114+8827
ATTN: Andrew Stenzel

DRILL STEM TEST REPORT

11-20S-22W Ness,KS
Uehling-Schwien #1
Job Ticket: 63548 DST#:2
Test Start: 2018.02.18 @ 17:39:00

GENERAL INFORMATION:

Formation: Mississippi
Deviated: No Whipstock: ft (KB)
Time Tool Opened: 20:10:30
Time Test Ended: 00:08:30

Test Type: Conventional Bottom Hole (Reset)
Tester: Spencer J. Staab
Unit No: 84

Reference Elevations: 2240.00 ft (KB)
2235.00 ft (CF)
5.00 ft
KB to GR/CF:

Interval: 4396.00 ft (KB) To 4403.00 ft (KB) (TVD)
Total Depth: 4403.00 ft (KB) (TVD)
Hole Diameter: 7.88 inchest-hole Condition: Fair

Serial #: 8934 Inside

REVISED

IT (KBS)

Test Type: Conventional Bottom Hole (Reset)

Time Tool Opened: 20:10:30

Time Test Ended: 00:08:30

Tester: Spencer J. Staab

Unit No: 84

Interval: 4396.00 ft (KB) To 4403.00 ft (KB) (TVD)

Reference Elevations: 2240.00 ft (KB)

2235.00 ft (CF)

Total Depth: 4403.00 ft (KB) (TVD)

KB to GR/CF: 5.00 ft

Hole Diameter: 7.88 inchesHole Condition: Fair

Serial #: 8934

Press@RunDepth: 40.29 psig @ 4398.00 ft (KB)

Capacity: 8000.00 psig

2018.02.19

Last Calib.: 2018.02.19

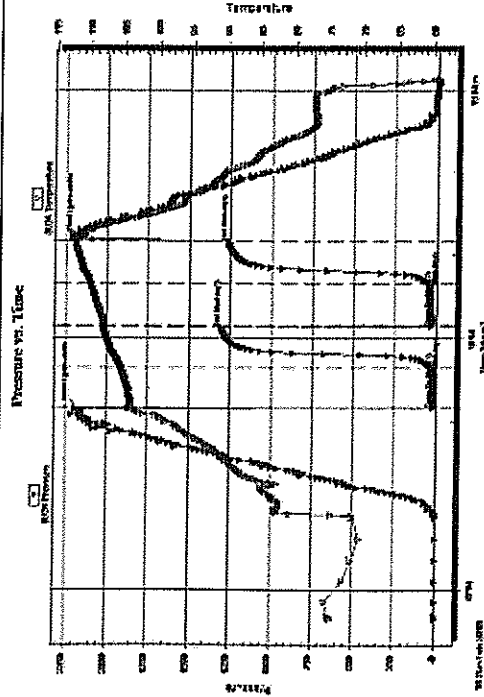
Start Date: 2018.02.18

Time On Birt: 2018.02.18 @ 20:10:00

Start Time: 17:39:15

Time Off Birt: 2018.02.18 @ 22:12:15

TEST COMMENT: 30-F-Weak Blow; Built to 1"
30-ISI-No Return
30-FF-Weak Blow; Built to 1"
30-FSI-No Return



PRESSURE SUMMARY

Time (Min.)	Pressure (psig)	Temp (deg F)	Annotation
0	2185.55	104.30	Initial Hydro-static
1	17.02	103.72	Open To Flow (1)
29	25.56	105.36	Shut-In(1)
59	1307.01	108.09	End Shut-In(1)
60	27.98	107.81	Open To Flow(2)
89	40.29	109.85	Shut-In(2)
121	1266.74	112.13	End Shut-In(2)
123	2161.57	112.41	Final Hydro-static

Recovery

Length (ft)	Description	Volume (BS)
10.00	OCM 10%O 90%M	0.05
25.00	HOCM 50%O 50%M	0.12
30.00	Clean Oil 100%O	0.15

*Recovery from multiple tests

Gas Rates

Choke (Inches)	Pressure (psig)	Gas Rate (Mcf/d)

Triblote Testing, Inc

Ref. No: 63548

Printed: 2018.02.21 @ 15:52:55



DRILL STEM TEST REPORT

Palomino Petroleum, Inc.

11-20S-22W Ness, KS

4924 SE 84th St
New ton KS 67114+8827

Uehling-Schwien #1

Job Ticket: 63549 DST#: 3

ATTN: Andrew Stenzel

Test Start: 2018.02.19 @ 05:20:00

GENERAL INFORMATION:

Formation: Mississippi
Deviated: No Whipstock: ft (KB)
Time Tool Opened: 08:33:00
Time Test Ended: 12:05:45

Test Type: Conventional Bottom Hole (Reset)
Tester: Spencer J. Staab
Unit No: 84

Interval: 4402.00 ft (KB) To 4413.00 ft (KB) (TVD)
Total Depth: 4413.00 ft (KB) (TVD)
Hole Diameter: 7.88 inchesHole Condition: Fair

Reference Elevations: 2240.00 ft (KB)
2235.00 ft (CF)
KB to GR/CF: 5.00 ft

Serial #: 8934

Press@RunDepth: 29.44 psig @ 4404.00 ft (KB)
Start Date: 2018.02.19
End Date: 2018.02.19

Capacity: 8000.00 psig

Last Calib.: 2018.02.19

Start Time: 05:20:15

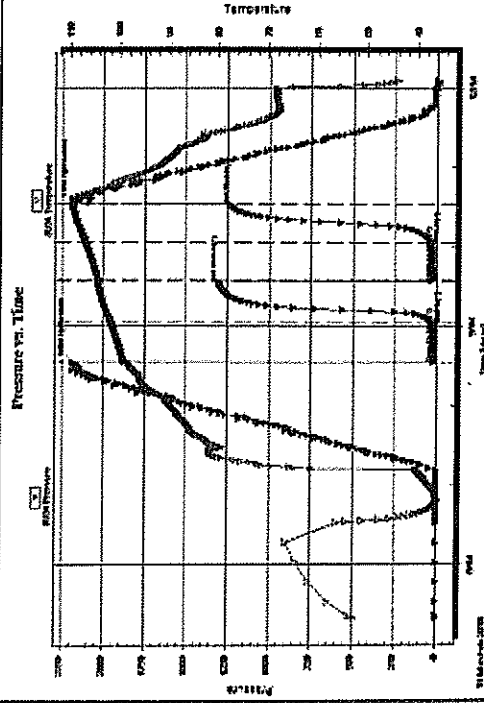
Time On Birt: 2018.02.19 @ 08:32:45

End Time: 12:05:45

Time Off Birt: 2018.02.19 @ 10:33:15

TEST COMMENT: 30-F-Weak Blow; Built to 2 3/4"
30-ISI-Weak Blow; Built to 1/4"
30-FF-Weak Blow; Built to 1 3/4"
30-FSI-Weak Surface Blow

TEST COMMENT: 30-FF-Weak Blow; Built to 2 3/4"
30-ISI-Weak Blow; Built to 1 1/4"
30-FF-Weak Blow; Built to 1 3/4"
30-FSI-Weak Surface Blow



PRESSURE SUMMARY

Time (Min.)	Pressure (psig)	Temp (deg F)	Annotation
0	2189.50	98.10	Initial Hydro-static
1	17.62	98.15	Open To Flow (1)
30	21.97	101.61	Shut-In(1)
60	1305.08	104.48	End Shut-In(1)
62	24.35	104.32	Open To Flow (2)
90	29.44	106.75	Shut-In(2)
120	1236.31	109.48	End Shut-In(2)
121	2173.76	109.57	Final Hydro-static

Recovery

Length (ft)	Description	Volume (bbl)
5.00	OCM 10%O 90%M	0.02
15.00	Clean Oil 100%O	0.07

* Recovery from multiple tests

Trilobite Testing, Inc

Ref. No: 63549

Printed: 2018.02.21 @ 15:52:19

Gas Rates

Choke (Inches)	Pressure (psig)	Gas Rate (MCFG)



TRILOBITE TESTING, INC

DRILL STEM TEST REPORT

Palomino Petroleum, Inc.

11-20S-22W Ness,KS

4924 SE 84th St
Newton KS 67114+8827

Uehling-Schwien #1

Job Ticket: 63550 DST#: 4

ATTN: Andrew Stenzel

Test Start: 2018.02.19 @ 18:21:00

GENERAL INFORMATION:

Formation: Mississippi
Deviated: No Whipstock: ft (KB)
Time Tool Opened: 20:43:15
Time Test Ended: 00:33:00
Interval: 4411.00 ft (KB) To 4421.00 ft (KB) (TVD)
Total Depth: 4421.00 ft (KB) (TVD)
Hole Diameter: 7.88 inches-Hole Condition: Fair

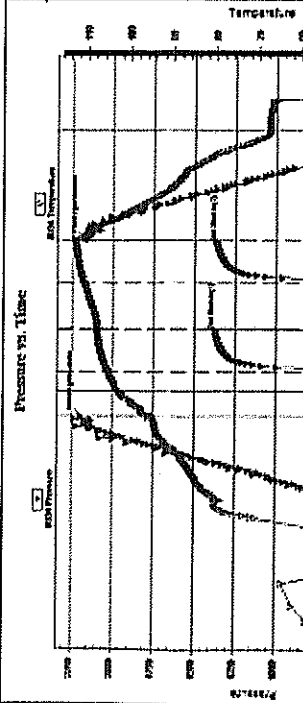
Test Type: Conventional Bottom Hole (Reset)
Tester: Spencer J. Staab
Unit No: 84

Reference Elevations: 2240.00 ft (KB)
2235.00 ft (CF)
5.00 ft
KB to GR/CF:

Serial #: 8934 Inside
Press@RunDepth: 53.45 psig @ 4412.00 ft (KB)
Start Date: 2018.02.19 End Date:
Start Time: 18:21:15 End Time:

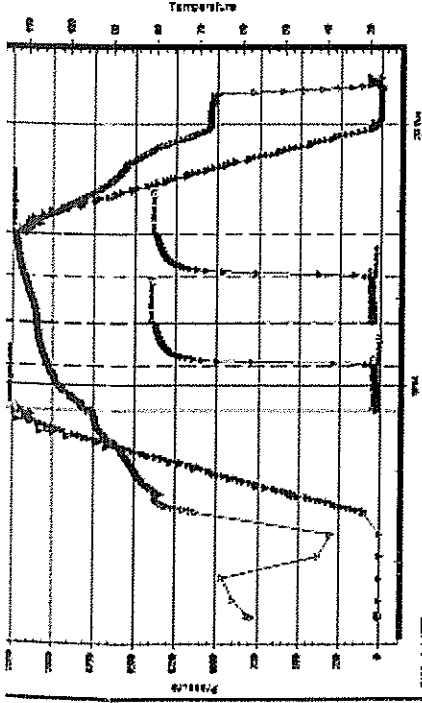
Capacity: 8000.00 psig
Last Calib.: 2018.02.20
Time On Birt: 2018.02.19 @ 20:43:00
Time Off Birt: 2018.02.19 @ 22:45:00

TEST COMMENT: 30-IF-Weak Blow; Built to 3 1/4"
30-ISI-Weak Blow; Built to 1/2"
30-FF-Weak Blow; Built to 2 1/4"
30-FSI-Weak Surface Blow



PRESSURE SUMMARY

Time (Min.)	Pressure (psig)	Temp (deg F)	Annotation
0	2191.26	95.81	Initial Hydro-static
1	18.13	94.67	Open To Flow (1)
31	34.34	105.04	Shut-In(1)
60	1374.01	107.89	End Shut-In(1)
61	37.59	107.31	Open To Flow (2)
91	53.45	110.58	Shut-In(2)
121	1363.05	112.75	End Shut-In(2)



Recovery

Length (ft)	Description	Volume (bbl)
35.00	GWCM 10%G 10%W 80%M	0.17
5.00	OCM 12%O 88%M	0.02

* Recovery from multiple tests

Trilobite Testing, Inc

Ref. No: 63650

Printed: 2018.02.21 @ 15:51:30

Gas Rates

Choke (Inches)	Pressure (psig)	Gas Rate (Mcf/D)

(Mn.)	(psig)	(deg F)
0	2191.26	95.81
1	18.13	94.67
31	34.34	105.04
60	1374.01	107.89
61	37.59	107.31
91	53.45	110.58
121	1363.05	112.75
122	2164.44	112.82

Initial Hydro-static
Open To Flow (1)
Shut-In(1)
End Shut-In(1)
Open To Flow(2)
Shut-In(2)
End Shut-In(2)
Final Hydro-static



TRILOBITE TESTING, INC

DRILL STEM TEST REPORT

Palomino Petroleum, Inc.
4924 SE 84th St
Newton KS 67114+8827
ATTN: Andrew Stenzel

11-20S-22W Ness,KS
Uehling-Schwien #1
Job Ticket: 63751 DST#: 5
Test Start: 2018.02.20 @ 08:32:00

GENERAL INFORMATION:

Formation: Mississippi
Deviated: No Whipstock: ft (KB)
Time Tool Opened: 11:37:00
Time Test Ended: 15:23:30
Interval: 4419.00 ft (KB) To 4443.00 ft (KB) (TVD)
Total Depth: 4443.00 ft (KB) (TVD)
Hole Diameter: 7.88 inchest-hole Condition: Fair

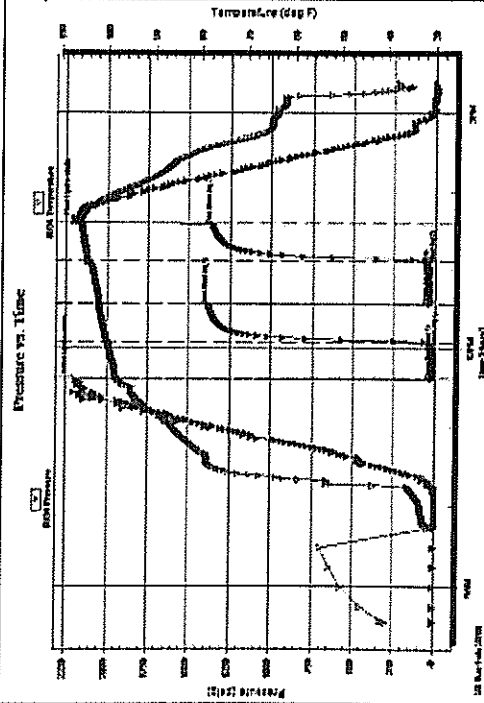
Test Type: Conventional Bottom Hole (Reset)
Tester: Spencer J. Staab
Unit No: 84

Reference Elevations: 2240.00 ft (KB)
2235.00 ft (CF)
5.00 ft
KB to GRVCF:

Serial #: 8934 Inside
Press@RunDepth: 44.87 psig @ 4420.00 ft (KB)
Start Date: 2018.02.20 End Date:
Start Time: 08:32:15 End Time:

Capacity: 8000.00 psig
Last Callb.: 2018.02.20
Time On Blmt: 2018.02.20 @ 11:36:00
Time Off Blmt: 2018.02.20 @ 13:36:00

TEST COMMENT: 30-IF-Weak Blow; Built to 2"
30-ISI-No Return
30-FF-Weak Blow; Built to 1"
30-FSI-No Return

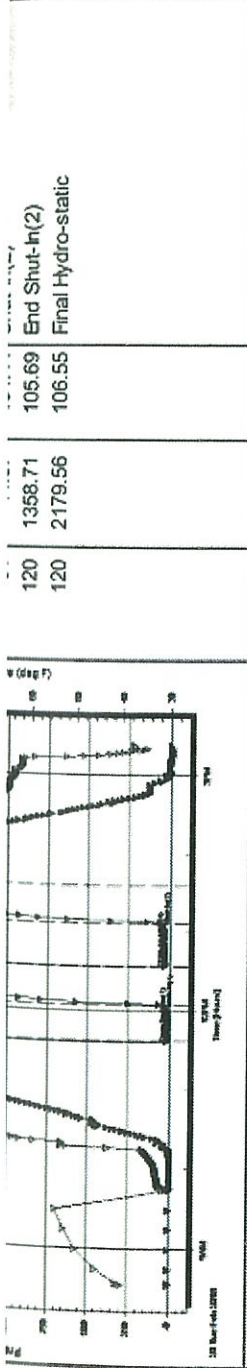


Recovery

PRESSURE SUMMARY

Time (Mn.)	Pressure (psig)	Temp (deg F)	Annotation
0	2186.37	98.06	Initial Hydro-static
1	18.67	98.06	Open To Flow (1)
29	28.45	99.97	Shut-In(1)
58	1379.50	102.05	End Shut-In(1)
59	33.13	101.58	Open To Flow (2)
91	44.87	104.44	Shut-In(2)
120	1368.71	105.69	End Shut-In(2)
120	2179.56	106.55	Final Hydro-static

Gas Rates



120 1358.71 105.69 End Shut-In(2)
 120 2179.56 106.55 Final Hydro-static

Recovery

Length (ft)	Description	Volume (bbl)
70.00	WCM 15%W 85%M	0.34

Gas Rates

Choke (inches)	Pressure (psig)	Gas Rate (McA/d)

*Recovery from multiple tests

Trilobite Testing, Inc

Ref. No: 63751

Printed: 2018.02.21 @ 15:50:10

Services

RIG: WW DRILLING, Rig #10

MUD: MUDCO

LOGS: PIONEER WIRELINE

TESTER: TRILOBITE TESTING

Casing Record

SURFACE Casing: Ran 5 jts new 8 5/8", 24# casing @ 218'.

PRODUCTION Casing: Ran 110 jts used 5 1/2", 17# casing 2' off bottom at 4544'.

Formation Tops

Sample Tops

Anhy. 1497 (+743)
 Base Anhy. 1527 (+713)
 Heebner 3735 (-1495)
 Lansing 3784 (-1544)
 BKC 4105 (-1865)
 Pawnee 4211 (-1971)
 Ft. Scott 4295 (-2055)
 Cher. Sh. 4321 (-2081)
 Miss. 4387 (-2147)
 Osage 4395 (-2155)
 RTD 4545 (-2305)

LogTops

Anhy. 1497 (+743)
 Base Anhy. 1526 (+714)
 Heebner 3734 (-1494)
 Lansing 3786 (-1546)
 BKC 4104 (-1864)
 Pawnee 4216 (-1976)
 Ft. Scott 4296 (-2056)
 Cher. Sh. 4319 (-2079)
 Miss. 4389 (-2149)
 Osage 4396 (-2156)
 LTD 4546 (-2306)

ROCK TYPES

Anhy	Clyst	Shgy
Bent	Carb sh	Sltst
Brec	Congl	Ss
Cht	Dol	Till
	Mrlst	
	Salt	
	Shale	
	Shcol	
	Gyp	
	Igne	
	Lmst	
	Meta	

ROP (min/ft)

Misc

% Lithology

Geological Descriptions

DST

Depth
 0 to 5000 ft

DST

Geological Descriptions

% Lithology

Depth

Misc

ROP (min/ft)

ROP (min/ft)

33

3400

3450

3500

3550

3600

1450

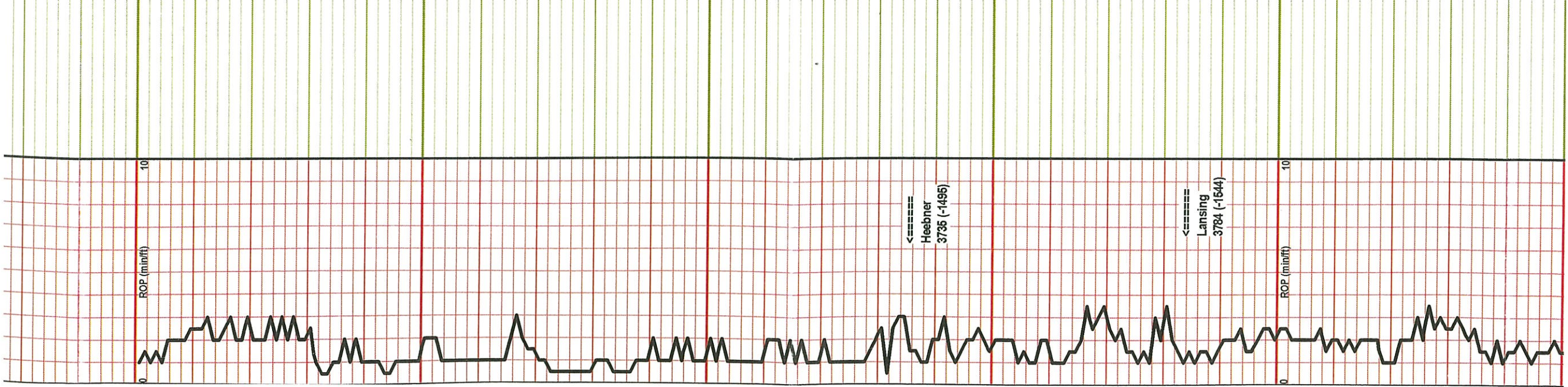
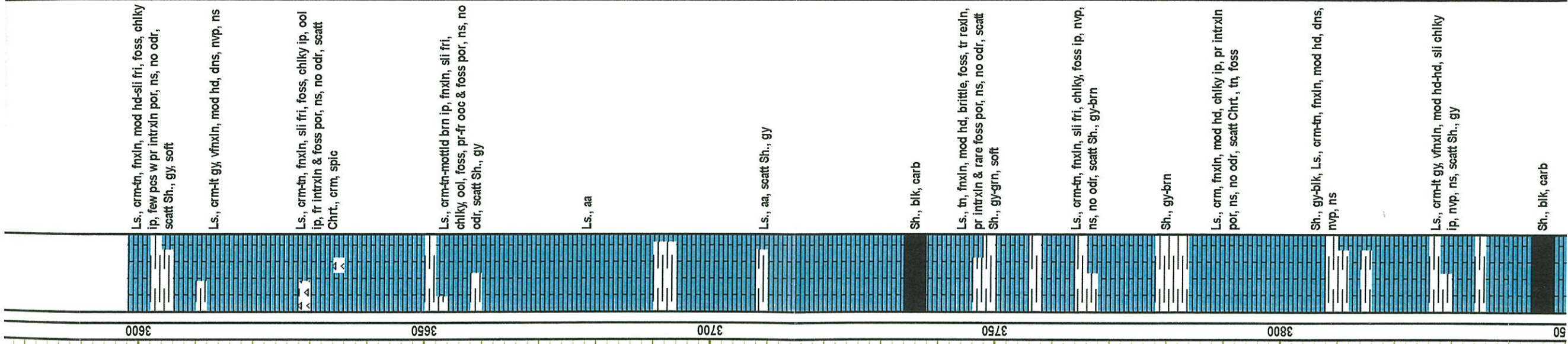
1500

1550

=====
Anhy.
1497 (+743)

=====
Base Anhy.
1527 (+713)

Ls., crm-tn, fnxin, mod hd-sil fri, foss, chlkv



Ls., crm-lt gy, vfnxln, mod hd-hd, sli chiky ip, nvp, ns, scatt Sh., gy

Sh., blk, carb

Ls., tn-lt gy, fmxln, mod hd, tr rexln, ool ip, pr intrxln & rare introol por, ns, no odr

Ls., crm, fmxln, mod hd, chiky ip, dns ip, nvp, ns, no odr, abund Chrt., tn, foss shp

Ls., crm-lt gy, fn-vfnxln, mod hd, chiky ip, tr rexln, few pcs w pr intrxln por, ns, no odr

Sh., gy, fss, Ls., aa

Ls., crm-lt gy, fmxln, mod hd, tr rexln, nvp, ns, abund Sh., gy-dk gy

Ls., crm, vfnxln, sli fri, brittle, nvp, ns, abund Sh., gy, fss, scatt Chrt., tn-lt gy, foss

Ls., crm, fmxln, mod hd, ool, fr ooc por, ns, no odr

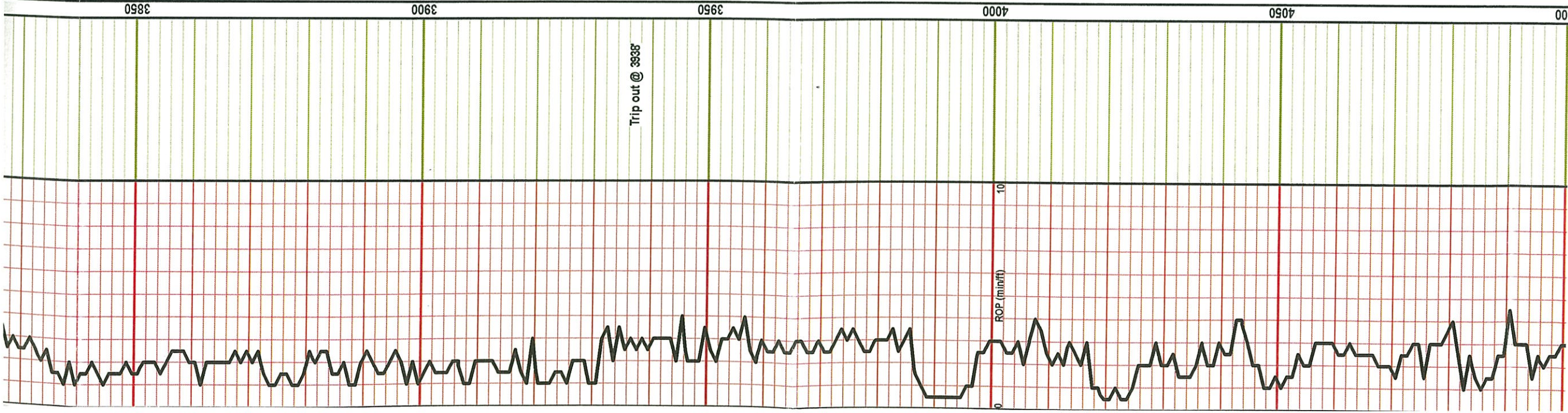
Ls., crm, fmxln, mod hd, ool ip, chiky ip, few pcs w pr ooc por, ns, no odr, scatt Sh., gy, fss

Ls., crm, fmxln, mod hd-sli fri, ool, fr-gd ooc por, ns, no odr, some Ls., crm, vfnxln, mod hd, dns, nvp, ns

Ls., crm, fn-vfnxln, mod hd, chiky ip, ool ip, few pcs w pr ooc por, ns, no odr, scatt Sh., gy

Sh., blk, carb

Ls., crm-lt gy, mod hd, brittle, foss ip, nvp, ns, scatt Sh., gy



3850

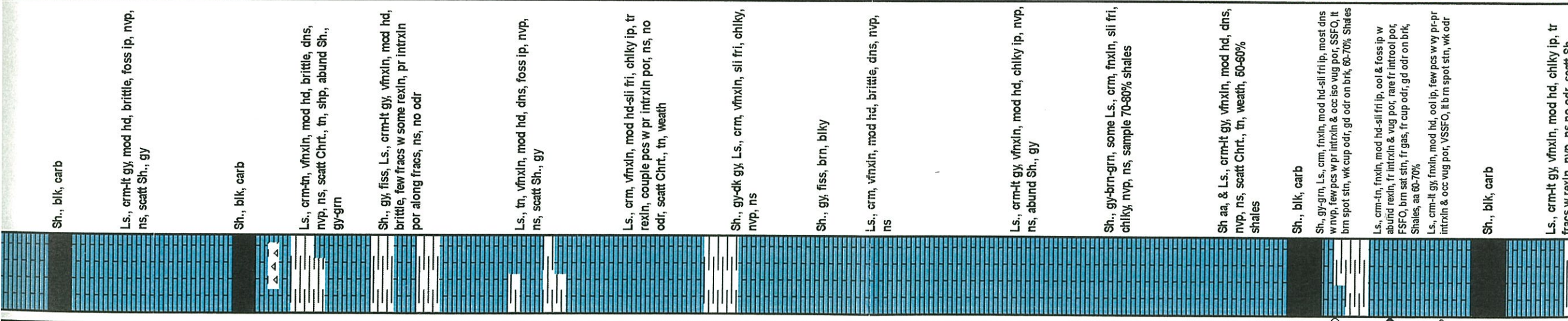
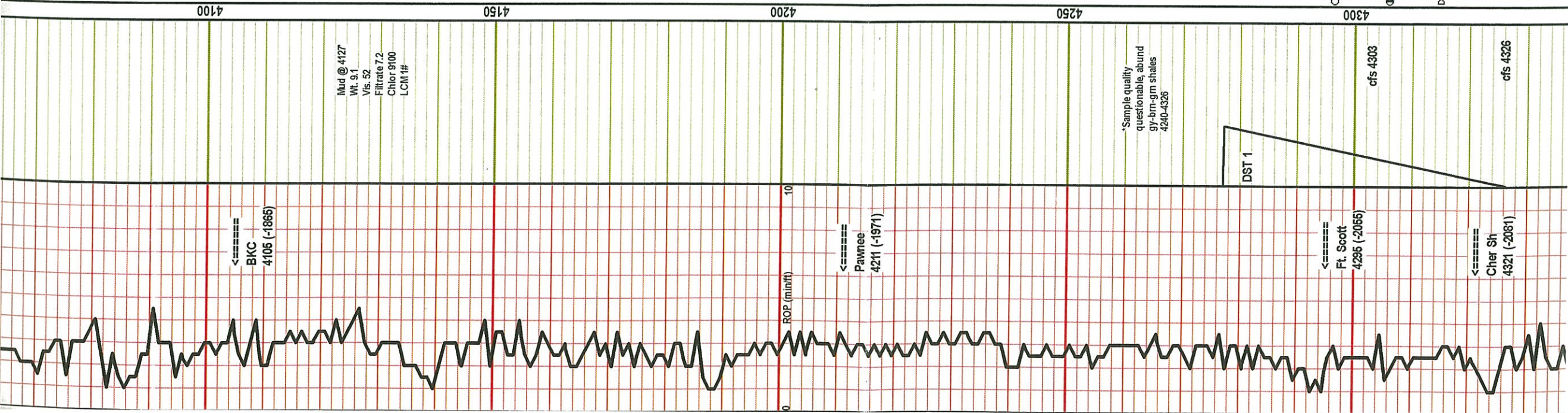
3900

3950

4000

4050

00



DST #1 4277-4326

30-30-30-30
 IF: BOB in 20 min
 IS: No blow
 FF: BOB in 20 min
 FS: No blow

Recovery:

60' GOCM (10%G, 20%O, 70%A)
 20' SOCM (7%O, 93%A)

80' TF
 FP: 20-38; 38-54
 SIP: 766-776
 HP: 2129-2079

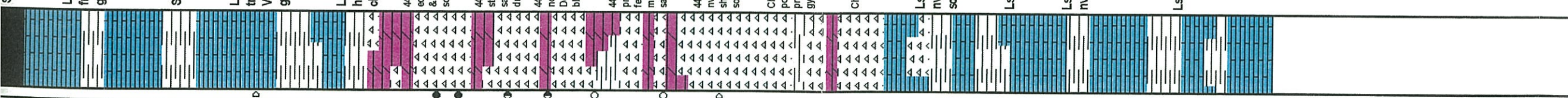
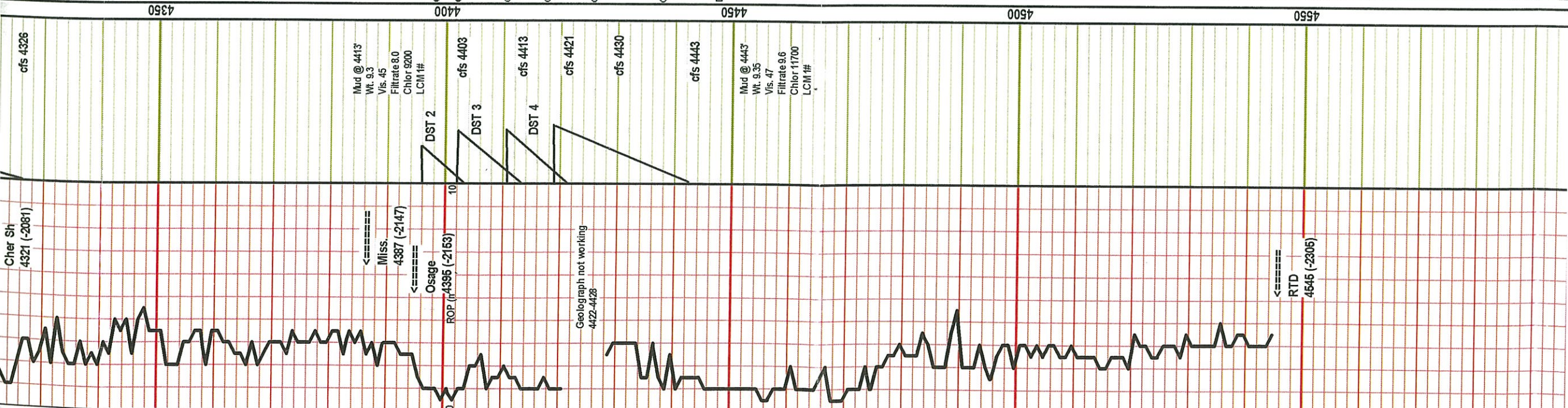
BHT: 108
 Gravity: --
 Chlor: --

DST #2 4396-4403

30-30-30-30
 IF: BOB in 20 min

Cher Sh
4321 (-2081)

cfs 4326



Sh., blk, carb

Ls., crm-tk, gy, vfnxln, mod hd, chiky ip, tr fracs w rexln, nvp, ns no odr, scatt Sh., gy-grn

Sh., gy-brn-blk

Ls., crm-tr, fnxln, mod hd, chiky ip, shly ip, tr rexln, couple pcs w pr small vug por, VSSFO, blk res stn, no odr, abund Sh., gy-brn-yel

Ls & Sh., aa, some Dol., lt gy, vfnxln, mod hd, dns, weath, nvp, ns, few pcs Chrt., clr-pink, weath

4403 Chrt., wht-crm, most fresh, shp w abund lt brn edge stn, vug por on edges, 20-30% trip wfr-gd intrclin & fr vug por, VGSFO, sat brn stn, abund gas, excel odr, some free oil in cup

4413 Chrt., wht, most fresh, shp, abund lt brn edge stn, few pcs w vis vugs, 20-30% trip w pr vis por, sub sat stn, FSFO, gd odr, some Dol., tn, vfnxln, mod hd, dns, nvp, ns

4421 Chrt., wht, fresh, most w some edge stn, some w no stn, some trip w pr vis por, sub sat stn, FSFO, 20% Dol., tn, fnxln, fri, suc, fr suc por, SSFO, sat stn, gd bleed w gas, gd cup odr

4430 Chrt., wht-clr, some weath, most fresh, few pcs w pr vis por, FSFO, sub sat stn, some pcs w blk res stn, few pcs w edge stn, Dol., tn-lt gy, fn-vfnxln, mod hd, most dns w nvp, some suc w pr suc por, SSFO, sub sat stn, abund Sh., gy-brn, wk cup odr

4443 Dol., crm, vfnxln, mod hd/firm, chiky ip, most w nvp, ns, few suc w pr por, SSFO, Chrt., crm-wht-clr, shp, few pcs w pr vis por, sub sat stn, some edge stn, some w no stn, fr cup odr

Chrt., wht-clr, most fresh, shp, few pcs trip w pr vis por, rare blk stn, NSFO, few pcs Dol., tn, fnxln, fri, suc, pr suc por, SSFO, sub sat stn, wk cup odr, scatt Sh., gy

Chrt., wht, fresh, shp, nvp, ns, no odr

Ls., crm-tr, vfnxln, mod hd, col ip, dns, nvp, Chrt., wht, fresh, shp, nvp, ns, no odr, scatt Sh., gy-brn

Ls., aa, abund Sh., gy-brn

Ls., crm, fnxln, mod hd, chiky ip, ool ip, nvp, ns, abund sh., aa

Ls., aa, incr Sh., aa

DST #2 4396-4403

30-30-30-30
IF: Built to 1"
IS: No blow
FF: Built to 1"
FS: No blow

Recovery:
30' CO (100%O)

25' HOCM (50%O, 50%AM)
10' OCM (10%O, 90%AM)

65' TF

FP: 17-26; 28-40
SIP: 1307-1267
HP: 2186-2162

BHT: 112
Gravity: 38
Chlor: —

DST #3 4402-4413

30-30-30-30

IF: Built to 2 3/4"
IS: Weak blow, built to 1/4"
FF: Built to 1 3/4"
FS: WSB

Recovery:
15' CO (100%O)

5' OCM (10%O, 90%AM)

20' TF

FP: 18-22; 24-29
SIP: 1305-1236
HP: 2190-2174

BHT: 109
Gravity: 38
Chlor: —

DST #4 4411-4421

30-30-30-30

IF: Built to 3 1/4"
IS: Weak blow, built to 1/2"
FF: Built to 2 1/4"
FS: WSB

Recovery:
5' OCM (12%O, 88 %AM)

35' GWCM (10%G, 10%W, 80%AM)

40' TF

FP: 18-34; 38-53
SIP: 1374-1363
HP: 2191-2164

BHT: 112
Gravity: —
Chlor: 38000

DST 5 4419-4443

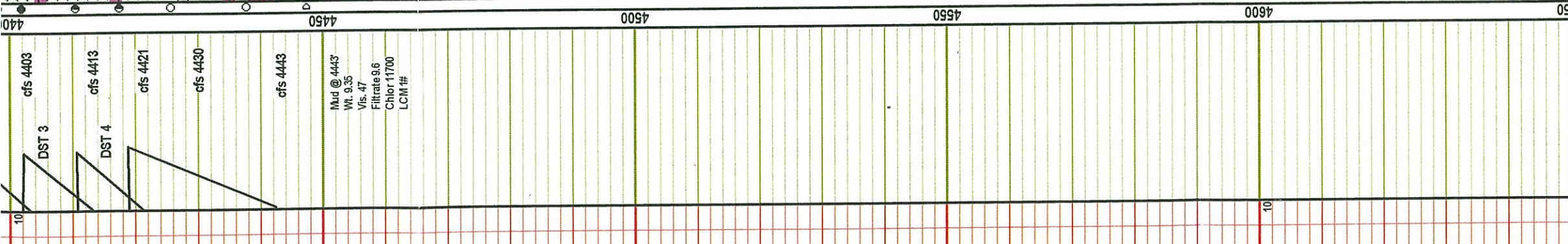
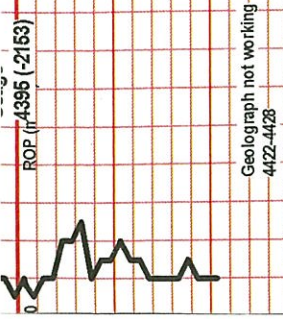
30-30-30-30

IF: Built to 2"
IS: No blow
FF: Built to 1"
FS: No blow

Recovery:
70' WCM (16%AM, 86%AM)

FP: 19-28; 33-45
SIP: 1360-1359
HP: 2186-2180

BHT: 105
Gravity: —
Chlor: 35000



some free oil in cup

4413 Chrt., wnt, most fresh, shp, abund lt brn edge stn, few pcs w vis vugs, 20-30% trip w pr vis por, sub sat stn, FSFO, gd odr, some Dol., tn, vfnxln, mod hd, dns, nvp, ns

4421 Chrt., wnt, fresh, most w some edge stn, some w no stn, some trip w pr vis por, sub sat stn, FSFO, 20% Dol., tn, fnxln, fri, sucr, fr sucr por, FSFO, sat stn, gd bleed w gas, gd cup odr

4430 Chrt., wnt-clr, some weath, m ost fresh, few pcs w pr vis por, FSFO, sub sat stn, some pcs w blk res stn, few pcs w edge stn, Dol., tn-lt gy, fn-vfnxln, mod hd, most dns w nvp, some sucr w pr sucr por, SSFO, sub sat stn, abund Sh., gy-brn, wk cup odr

4443 Dol., crm, vfnxln, mod hd/firm, chiky ip, most w nvp, ns, few sucr w pr por, SSFO, Chrt., crm-wht-clr, shp, few pcs w pr vis por, sub sat stn, some edge stn, some w no stn, fr cup odr

Chrt., wnt-clr, most fresh, shp, few pcs trip w pr vis por, rare blk stn, NSFO, few pcs Dol., tn, fnxln, fri, sucr, pr sucr por, SSFO, sub sat stn, wk cup odr, scatt Sh., gy

Chrt., wnt., fresh, shp, nvp, ns, no odr

Ls., crm-tn, vfnxln, mod hd, ool ip, dns, nvp, Chrt., wnt., fresh, shp, nvp, ns, no odr, scatt Sh., gy-brn

Ls., aa, abund Sh., gy-brn

Ls., crm, fnxln, mod hd, chiky ip, ool ip, nvp, ns, abund sh., aa

Ls., aa, incr Sh., aa

DST #4 4411-4421
 IF: Built to 3 1/4"
 IS: Weak blow, built to 1/2"
 FF: Built to 2 1/4"
 FS: WSB

Recovery:
 5' OCM (12%O, 88 %AM)
 35' GWCIM (10%G, 10%AM, 80%AM)

30-30-30-30
 40' TF
 FP: 18-34; 38-63
 SIP: 1374-1363
 HP: 2191-2164
 BHT: 112
 Gravity: -
 Chlor: 38000

DST 5 4419-4443
 30-30-30-30
 IF: Built to 2"
 IS: No blow
 FF: Built to 1"
 FS: No blow

Recovery:
 70' WCM (16%AM, 85%AM)

FP: 19-28; 33-45
 SIP: 1380-1359
 HP: 2186-2180
 BHT: 106
 Gravity: -
 Chlor: 35000