

KANSAS CORPORATION COMMISSION
OIL & GAS CONSERVATION DIVISION

TEMPORARY ABANDONMENT WELL APPLICATION

OPERATOR: License#
Name:
Address 1:
Address 2:
City: State: Zip:
Contact Person:
Phone:
Contact Person Email:
Field Contact Person:
Field Contact Person Phone:

API No. 15-
Spot Description:
Sec. Twp. S. R.
GPS Location: Lat: Long:
Datum: NAD27 NAD83 WGS84
County: Elevation:
Lease Name: Well #:
Well Type: Oil Gas OG WSW Other:
SWD Permit #: ENHR Permit #:
Gas Storage Permit #:
Spud Date: Date Shut-In:

Table with 7 columns: Conductor, Surface, Production, Intermediate, Liner, Tubing. Rows include Size, Setting Depth, Amount of Cement, Top of Cement, Bottom of Cement.

Casing Fluid Level from Surface: How Determined? Date:
Casing Squeeze(s): to w / sacks of cement, to w / sacks of cement. Date:
Do you have a valid Oil & Gas Lease? Yes No
Depth and Type: Junk in Hole at Tools in Hole at Casing Leaks: Yes No Depth of casing leak(s):
Type Completion: ALT. I ALT. II Depth of: DV Tool: w / sacks of cement Port Collar: w / sack of cement
Packer Type: Size: Inch Set at: Feet
Total Depth: Plug Back Depth: Plug Back Method:

Geological Date:

Table with 4 columns: Formation Name, Formation Top, Formation Base, Completion Information. Rows 1 and 2.

UNDER PENALTY OF PERJURY I HEREBY ATTEST THAT THE INFORMATION CONTAINED HEREIN IS TRUE AND CORRECT TO THE BEST OF MY KNOWLEDGE

Submitted Electronically

Do NOT Write in This Space - KCC USE ONLY
Date Tested: Results: Date Plugged: Date Repaired: Date Put Back in Service:
Review Completed by: Comments:
TA Approved: Yes Denied Date:

Mail to the Appropriate KCC Conservation Office:

Table with 2 columns: Office Address, Phone. Rows for KCC District Office #1, #2, #3, #4.

Liquid Level

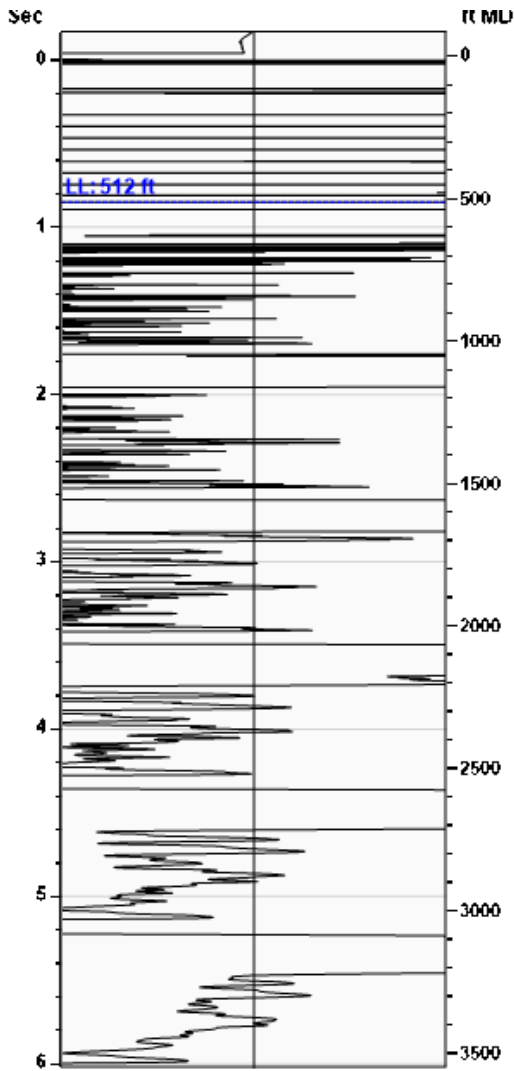
512 ft MD

Fluid Above Pump

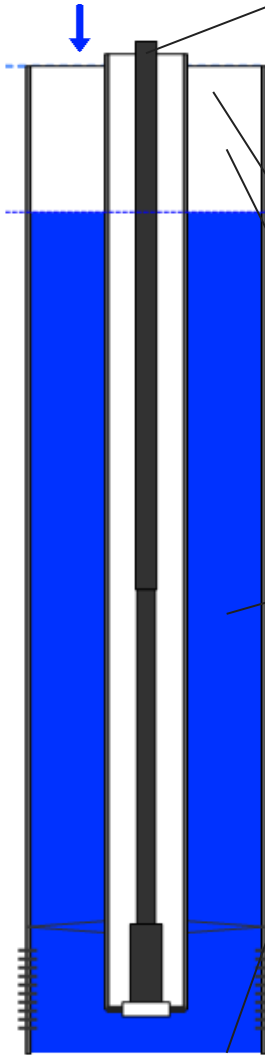
2800 ft TVD

Equivalent Gas Free Above Pump

2800 ft TVD



Gun - WG 5240



Production

Date Entered	03/26/19		
	Current	Potential	
Oil	0	**	BBL/D
Water	500	**	BBL/D
Gas	0.0	**	Mscf/D
IPR Method	Vogel		
PBHP/SBHP	-0.00		
Producing Efficiency	0.00%		

Casing Pressure

Pressure	12.7 psi (g)
----------	--------------

Annular Gas Flow

Gas Flow	0.0 Mscf/D
----------	------------

Fluid Properties

% Liquid Above Pump	100.00%
% Liquid Below Pump	100.00%

Depths

Pump Intake Depth	3312 ft
Formation Depth	3468 ft

Wellbore Pressures

PIP	1286.2 psi (g)
PBHP	1357.1 psi (g)
SBHP	**
Gas/Liq Interface	13.1 psi (g)

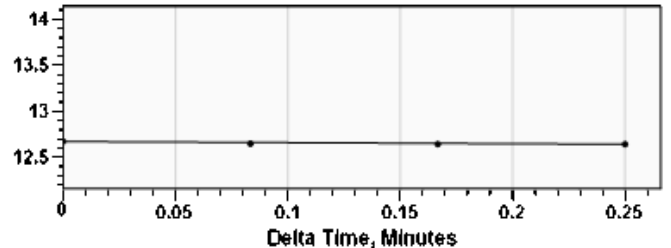
Acoustic Velocity

Surface Temp	70 deg F	0.00% CO2
Bottomhole Temp	150 deg F	0.00% N2
Pressure	12.7 psi (g)	0.00% H2S
Gas Gravity	0.8433 Air = 1	

Acoustic Velocity	1175 ft/s
Joints Per Sec.	18.08 Jts/sec
Joints To Liquid	15.75 Jts

Calculated From Known Gas Specific Gravity

Casing Pressure Buildup



Casing Pressure	12.7 psi (g)
Buildup	-0.0 psi (g)
Buildup Time	15 sec
Gas Gravity from Acoustic Velocity	0.8433 Air = 1

Comments and Recommendations

Echometer Company
 5001 Ditto Lane
 Wichita Falls, TX 76302
 (940) 767-4334
 info@echometer.com

June 01, 2020

Joe Craig
SNR Kansas Operating, LLC
301 NW 63RD STREET STE 400
OKLAHOMA CITY, OK 73116

Re: Temporary Abandonment
API 15-035-24697-00-00
ANDES 27 2
NE/4 Sec.27-32S-05E
Cowley County, Kansas

Dear Joe Craig:

"Your temporary abandonment (TA) application for the well listed above has been approved. In accordance with K.A.R. 82-3-111 the TA status of this well will expire 06/01/2021.

- * If you return this well to service or plug it, please notify the District Office.
- * If you sell this well you are required to file a Transfer of Operator form, T-1.
- * If the well will remain temporarily abandoned, you must submit a new TA application, CP-111, before 06/01/2021.

You may contact me at the number above if you have questions.

Very truly yours,

DUANE KRUEGER"