

KANSAS CORPORATION COMMISSION
OIL & GAS CONSERVATION DIVISION

TEMPORARY ABANDONMENT WELL APPLICATION

OPERATOR: License#
Name:
Address 1:
Address 2:
City: State: Zip:
Contact Person:
Phone:
Contact Person Email:
Field Contact Person:
Field Contact Person Phone:

API No. 15-
Spot Description:
Sec. Twp. S. R.
GPS Location: Lat: Long:
Datum:
County: Elevation:
Lease Name: Well #:
Well Type:
Spud Date: Date Shut-In:

Table with 7 columns: Conductor, Surface, Production, Intermediate, Liner, Tubing. Rows include Size, Setting Depth, Amount of Cement, Top of Cement, Bottom of Cement.

Casing Fluid Level from Surface:
Casing Squeeze(s):
Do you have a valid Oil & Gas Lease?
Depth and Type:
Type Completion:
Packer Type:
Total Depth: Plug Back Depth: Plug Back Method:

Geological Data:

Table with 4 columns: Formation Name, Formation Top, Formation Base, Completion Information. Rows 1 and 2.

UNDER PENALTY OF PERJURY I HEREBY ATTEST THAT THE INFORMATION CONTAINED HEREIN IS TRUE AND CORRECT TO THE BEST OF MY KNOWLEDGE

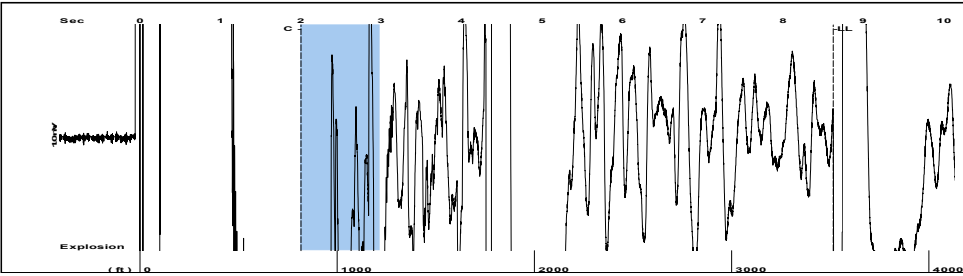
Submitted Electronically

Do NOT Write in This Space - KCC USE ONLY
Date Tested: Results: Date Plugged: Date Repaired: Date Put Back in Service:
Review Completed by: Comments:
TA Approved: Yes Denied Date:

Mail to the Appropriate KCC Conservation Office:

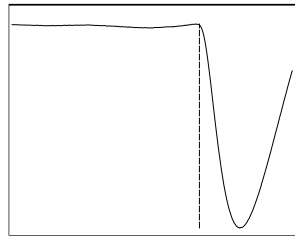
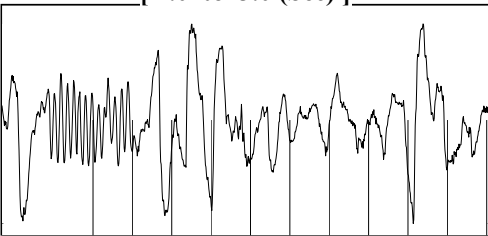
Table with 2 columns: Office Address, Phone. Rows for District Office #1, #2, #3, #4.

Group: MyWells Well: BERTRAND #1 (acquired on: 05/20/20 10:36:06)



Filter Type High Pass Automatic Collar Count Yes Time 8.629 sec  
 Manual Acoustic Veloc 783.684 ft/s Manual JTS/sec 12.3609 Joints 110.887 Jts  
 Depth 3515.11 ft

[ 2.0 to 3.0 (Sec) ]



Analysis Method: Automatic

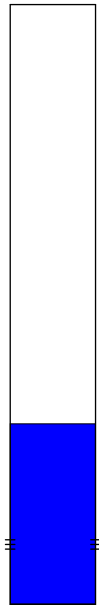
Group: MyWells Well: BERTRAND #1 (acquired on: 05/20/20 10:36:06)



Change in Pressure 0.00 psi NONE  
 Range 0 - ? psi  
 Change in Time 0.00 min

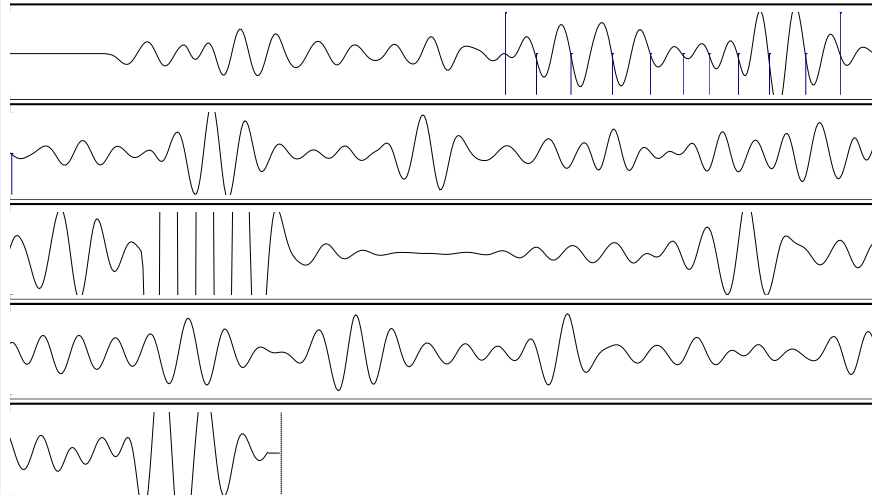
Group: MyWells Well: BERTRAND #1 (acquired on: 05/20/20 10:36:06)

Production		Potential	Casing Pressure	Static
Current			1.9 psi (g)	
Oil -*-		-*- BBL/D	Casing Pressure Buildup	Oil Column Height
Water -*-		-*- BBL/D	0.046 psi	MD 0 ft
Gas -*-		-*- Mscf/D	1.00 min	Water Column Height
			Gas/Liquid Interface Pressure	MD -*- ft
			-*- psi (g)	
IPR Method	Vogel		Liquid Level Depth	
PBHP/SBHP	-*-		3515.11 ft	
Production Efficiency	0.0		Tubing Intake Depth	
			-*- ft	
Oil 40 deg.API			Formation Depth	
Water 1.05 Sp.Gr.H2O			4695.00 ft	
Gas 1.15 Sp.Gr.AIR				
Acoustic Velocity	814.72 ft/s			



Static  
 Oil Column Height  
 MD 0 ft  
 Water Column Height  
 MD -\*- ft  
 Static BHP  
 -\*- psi (g)

Group: MyWells Well: BERTRAND #1 (acquired on: 05/20/20 10:36:06)



12.89  
 12.50

Acoustic Velocity	814.72 ft/s	Joints counted	11
Joints Per Second	12.8505 jts/sec	Joints to liquid level	110.887
Depth to liquid level	3515.11 ft	Filter Width	10.3609 14.3609
Automatic Collar Count	Yes	Time to 1st Collar	1.148 2.004

Group: MyWells Well: BERTRAND #1 (acquired on: 05/20/20 10:36:06 )

Production  
 Current Potential  
 Oil - \* - - \* - BBL/D  
 Water - \* - - \* - BBL/D  
 Gas - \* - - \* - Mscf/D

Based on SBHP psi (g)

IPR Method Vogel

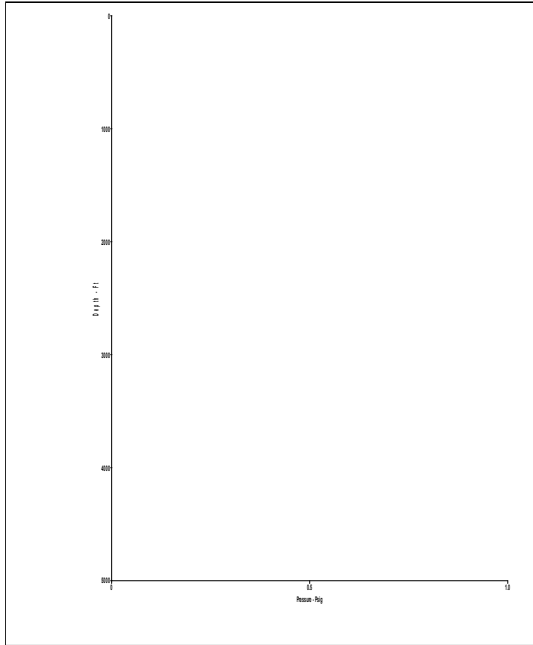
Calculation for Continous Removal of Liquids  
 Method:

Turner Critical Velocity for Gas Wells

For Tubing ID: 2.441 in  
 For Water: Mscf/D  
 For Condensate: Mscf/D

Back Pressure on Formation  
 Due To Liquid Loading: Mscf/D

Tubing ID in	Gas Rate Mscf/D	Predicted Status
2.441		
1.995		
1.500		
1.250		
1.000		



June 02, 2020

Jose Reyes  
American Warrior, Inc.  
PO BOX 399  
GARDEN CITY, KS 67846-0399

Re: Temporary Abandonment  
API 15-109-20673-00-00  
BERTRAND 1  
NW/4 Sec.26-11S-33W  
Logan County, Kansas

Dear Jose Reyes:

"Your temporary abandonment (TA) application for the well listed above has been approved. In accordance with K.A.R. 82-3-111 the TA status of this well will expire 06/02/2021.

- \* If you return this well to service or plug it, please notify the District Office.
- \* If you sell this well you are required to file a Transfer of Operator form, T-1.
- \* If the well will remain temporarily abandoned, you must submit a new TA application, CP-111, before 06/02/2021.

You may contact me at the number above if you have questions.

Very truly yours,

RICHARD WILLIAMS"