

KANSAS CORPORATION COMMISSION  
OIL & GAS CONSERVATION DIVISION

TEMPORARY ABANDONMENT WELL APPLICATION

OPERATOR: License# \_\_\_\_\_  
 Name: \_\_\_\_\_  
 Address 1: \_\_\_\_\_  
 Address 2: \_\_\_\_\_  
 City: \_\_\_\_\_ State: \_\_\_\_\_ Zip: \_\_\_\_\_ + \_\_\_\_\_  
 Contact Person: \_\_\_\_\_  
 Phone: ( \_\_\_\_\_ ) \_\_\_\_\_  
 Contact Person Email: \_\_\_\_\_  
 Field Contact Person: \_\_\_\_\_  
 Field Contact Person Phone: ( \_\_\_\_\_ ) \_\_\_\_\_

API No. 15- \_\_\_\_\_  
 Spot Description: \_\_\_\_\_  
 \_\_\_\_\_ - \_\_\_\_\_ - \_\_\_\_\_ - \_\_\_\_\_ Sec. \_\_\_\_\_ Twp. \_\_\_\_\_ S. R. \_\_\_\_\_  E  W  
 \_\_\_\_\_ feet from  N /  S Line of Section  
 \_\_\_\_\_ feet from  E /  W Line of Section  
 GPS Location: Lat: \_\_\_\_\_, Long: \_\_\_\_\_  
(e.g. xx.xxxxx) (e.g. -xxx.xxxxx)  
 Datum:  NAD27  NAD83  WGS84  
 County: \_\_\_\_\_ Elevation: \_\_\_\_\_  GL  KB  
 Lease Name: \_\_\_\_\_ Well #: \_\_\_\_\_  
 Well Type: (check one)  Oil  Gas  OG  WSW  Other: \_\_\_\_\_  
 SWD Permit #: \_\_\_\_\_  ENHR Permit #: \_\_\_\_\_  
 Gas Storage Permit #: \_\_\_\_\_  
 Spud Date: \_\_\_\_\_ Date Shut-In: \_\_\_\_\_

|                  | Conductor | Surface | Production | Intermediate | Liner | Tubing |
|------------------|-----------|---------|------------|--------------|-------|--------|
| Size             |           |         |            |              |       |        |
| Setting Depth    |           |         |            |              |       |        |
| Amount of Cement |           |         |            |              |       |        |
| Top of Cement    |           |         |            |              |       |        |
| Bottom of Cement |           |         |            |              |       |        |

Casing Fluid Level from Surface: \_\_\_\_\_ How Determined? \_\_\_\_\_ Date: \_\_\_\_\_  
 Casing Squeeze(s): \_\_\_\_\_ to \_\_\_\_\_ w / \_\_\_\_\_ sacks of cement, \_\_\_\_\_ to \_\_\_\_\_ w / \_\_\_\_\_ sacks of cement. Date: \_\_\_\_\_  
(top) (bottom) (top) (bottom)  
 Do you have a valid Oil & Gas Lease?  Yes  No  
 Depth and Type:  Junk in Hole at \_\_\_\_\_  Tools in Hole at \_\_\_\_\_ Casing Leaks:  Yes  No Depth of casing leak(s): \_\_\_\_\_  
(depth) (depth)  
 Type Completion:  ALT. I  ALT. II Depth of:  DV Tool: \_\_\_\_\_ w / \_\_\_\_\_ sacks of cement  Port Collar: \_\_\_\_\_ w / \_\_\_\_\_ sack of cement  
(depth) (depth)  
 Packer Type: \_\_\_\_\_ Size: \_\_\_\_\_ Inch Set at: \_\_\_\_\_ Feet  
 Total Depth: \_\_\_\_\_ Plug Back Depth: \_\_\_\_\_ Plug Back Method: \_\_\_\_\_

**Geological Data:**

| Formation Name | Formation Top | Formation Base | Completion Information   |
|----------------|---------------|----------------|--|
| 1. _____       | At: _____     | to _____ Feet  | Perforation Interval _____ to _____ Feet or Open Hole Interval _____ to _____ Feet |
| 2. _____       | At: _____     | to _____ Feet  | Perforation Interval _____ to _____ Feet or Open Hole Interval _____ to _____ Feet |

UNDER PENALTY OF PERJURY I HEREBY ATTEST THAT THE INFORMATION CONTAINED HEREIN IS TRUE AND CORRECT TO THE BEST OF MY KNOWLEDGE

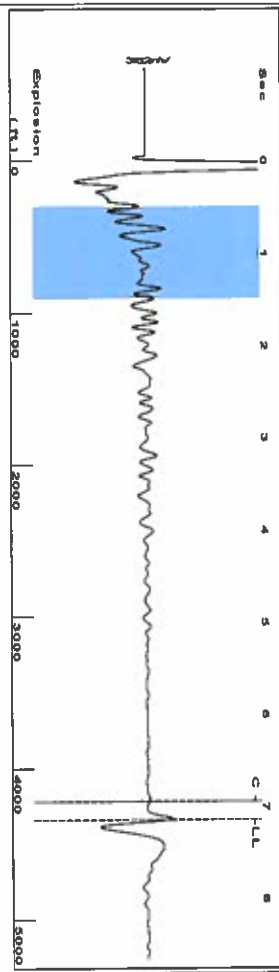
Submitted Electronically

|   |  |                |                     |                      |                                 |
|---|--|----------------|---------------------|----------------------|---------------------------------|
| <b>Do NOT Write in This Space - KCC USE ONLY</b>                                      | Date Tested: _____                         | Results: _____ | Date Plugged: _____ | Date Repaired: _____ | Date Put Back in Service: _____ |
|   | Review Completed by: _____ Comments: _____ |                |                     |                      |                                 |
| TA Approved: <input type="checkbox"/> Yes <input type="checkbox"/> Denied Date: _____ |  |                |                     |                      |                                 |

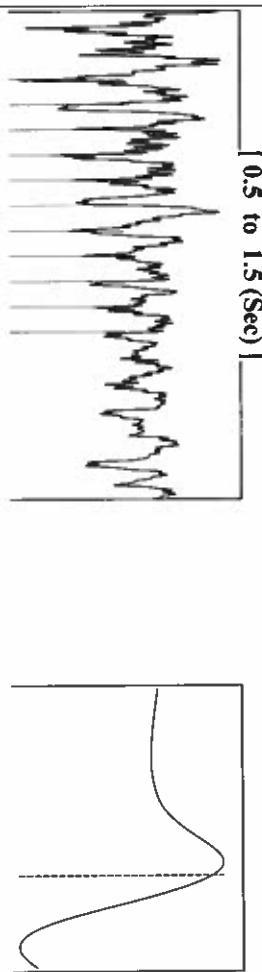
Mail to the Appropriate KCC Conservation Office:

|  |  |                    |
|--|--|--------------------|
|  | KCC District Office #1 - 210 E. Frontview, Suite A, Dodge City, KS 67801               | Phone 620.682.7933 |
|  | KCC District Office #2 - 3450 N. Rock Road, Building 600, Suite 601, Wichita, KS 67226 | Phone 316.337.7400 |
|  | KCC District Office #3 - 137 E. 21st St., Chanute, KS 66720                            | Phone 620.902.6450 |
|  | KCC District Office #4 - 2301 E. 13th Street, Hays, KS 67601-2651                      | Phone 785.261.6250 |

Group: TAD WELLS Well: Central Life 13 J (acquired on: 05/28/20 09:35:15)



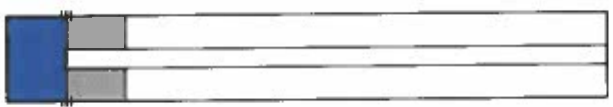
Filter Type: High Pass  
Manual Acoustic Velocity: 219.23 ft/s  
Automatic Collar Count: Yes  
Manual JTS/sec: 19.2308  
Time: 7.142 sec  
Joints: 136.935 Jts  
Depth: 4340.83 ft



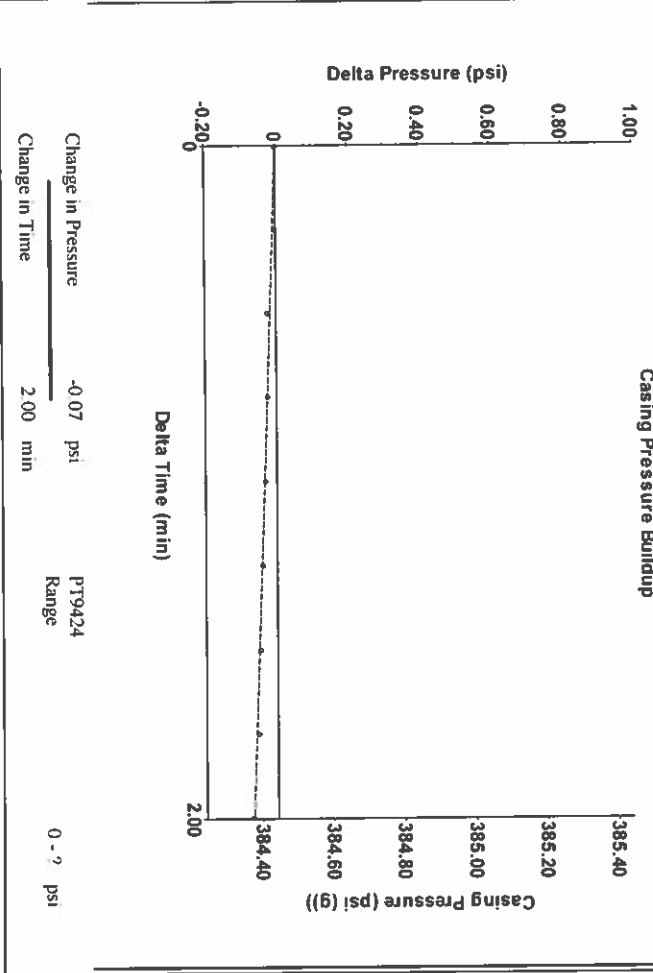
Analysis Method: Automatic

Group: TAD WELLS Well: Central Life 13 J (acquired on: 05/28/20 09:35:15)

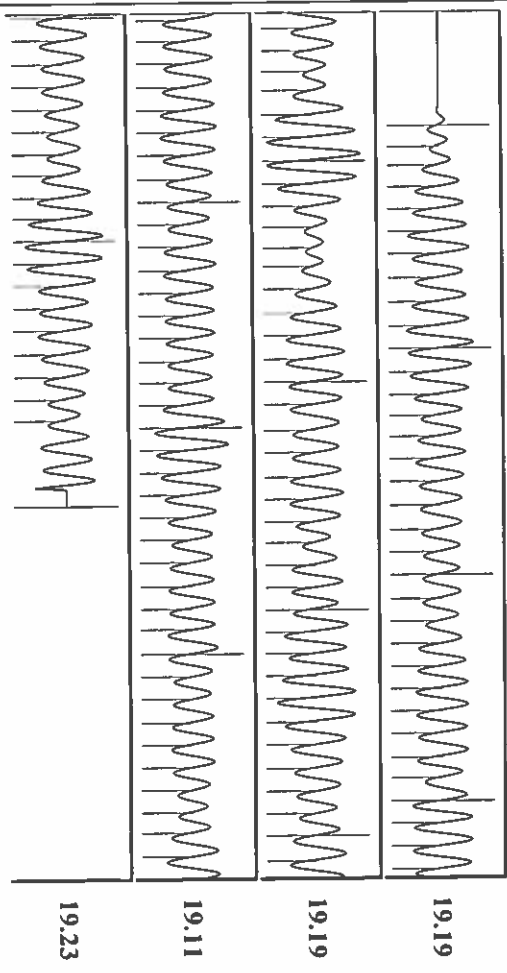
| Production            | Potential                 | Casing Pressure                             | Producing                   |
|-----------------------|---------------------------|---|-----------------------------|
| Oil Current           | Oil 40 deg API            | 384.4 psi (g)                               | Pump Intake 633.6 psi (g)   |
| Water                 | Water 1.05 Sp Gr H2O      | Casing Pressure Buildup -0.1 psi            | Producing BHP 633.6 psi (g) |
| Gas                   | Gas 0.73 Sp Gr AIR        | 2.00 min                                    | Static BHP                  |
| IPR Method            | Production Efficiency 0.0 | Gas/Liquid Interface Pressure 433.1 psi (g) | Annular Gas Flow 0 Mscf/D   |
| PBH/PSHHP             | Vogel                     | Liquid Level Depth 4340.83 ft               | % Liquid 100 %              |
| Production Efficiency | 0.0                       | Pump Intake Depth 4957.00 ft                |                             |
|                       |                           | Formation Depth 4957.00 ft                  |                             |
|                       |                           | Acoustic Velocity 1215.58 ft/s              |                             |
|                       |                           | Formation Submergence                       |                             |
|                       |                           | Total Gaseous Liquid Column HT (TVD)        |                             |
|                       |                           | Equivalent Gas Free Liquid HT (TVD)         |                             |
|                       |                           | Acoustic Test                               |                             |



Group: TAD WELLS Well: Central Life 13 J (acquired on: 05/28/20 09:35:15)



Group: TAD WELLS Well: Central Life 13 J (acquired on: 05/28/20 09:35:15)



| Acoustic Velocity | Joints Per Second | Depth to liquid level | Automatic Collar Count | Joints counted | Joints to liquid level | Filter Width | Time to 1st Collar |
|-------------------|-------------------|-----------------------|------------------------|----------------|------------------------|--------------|--------------------|
| 1215.58 ft/s      | 19.1732 Jts/sec   | 4340.83 ft            | Yes                    | 128            | 136.935                | 17.2308      | 21.2308            |
|                   |                   |                       |                        |                |                        | 0.264        | 6.94               |

June 02, 2020

Katherine McClurkan  
Merit Energy Company, LLC  
13727 Noel Road, Suite 1200  
Dallas, TX 75240-7362

Re: Temporary Abandonment  
API 15-129-20624-00-01  
Central Life 1-3J  
SE/4 Sec.03-35S-42W  
Morton County, Kansas

Dear Katherine McClurkan:

"Your temporary abandonment (TA) application for the well listed above has been approved. In accordance with K.A.R. 82-3-111 the TA status of this well will expire 06/02/2021.

- \* If you return this well to service or plug it, please notify the District Office.
- \* If you sell this well you are required to file a Transfer of Operator form, T-1.
- \* If the well will remain temporarily abandoned, you must submit a new TA application, CP-111, before 06/02/2021.

You may contact me at the number above if you have questions.

Very truly yours,

Michael Maier"