

KANSAS CORPORATION COMMISSION
OIL & GAS CONSERVATION DIVISION

TEMPORARY ABANDONMENT WELL APPLICATION

OPERATOR: License#
Name:
Address 1:
Address 2:
City: State: Zip:
Contact Person:
Phone:
Contact Person Email:
Field Contact Person:
Field Contact Person Phone:

API No. 15-
Spot Description:
Sec. Twp. S. R.
GPS Location: Lat, Long
Datum: NAD27, NAD83, WGS84
County: Elevation:
Lease Name: Well #:
Well Type: Oil, Gas, OG, WSW, Other
SWD Permit #: ENHR Permit #:
Gas Storage Permit #:
Spud Date: Date Shut-In:

Table with 7 columns: Conductor, Surface, Production, Intermediate, Liner, Tubing. Rows include Size, Setting Depth, Amount of Cement, Top of Cement, Bottom of Cement.

Casing Fluid Level from Surface: How Determined? Date:
Casing Squeeze(s): to w / sacks of cement, to w / sacks of cement. Date:
Do you have a valid Oil & Gas Lease? Yes No
Depth and Type: Junk in Hole at Tools in Hole at Casing Leaks: Yes No Depth of casing leak(s):
Type Completion: ALT. I ALT. II Depth of: DV Tool: w / sacks of cement Port Collar: w / sack of cement
Packer Type: Size: Inch Set at: Feet
Total Depth: Plug Back Depth: Plug Back Method:

Geological Data:

Table with 4 columns: Formation Name, Formation Top, Formation Base, Completion Information. Rows 1 and 2.

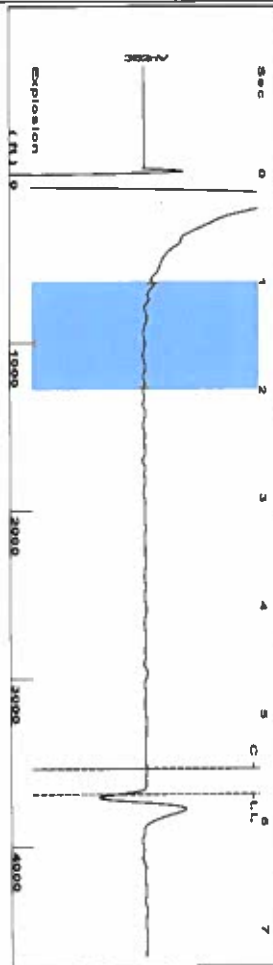
UNDER PENALTY OF PERJURY I HEREBY ATTEST THAT THE INFORMATION CONTAINED HEREIN IS TRUE AND CORRECT TO THE BEST OF MY KNOWLEDGE

Submitted Electronically

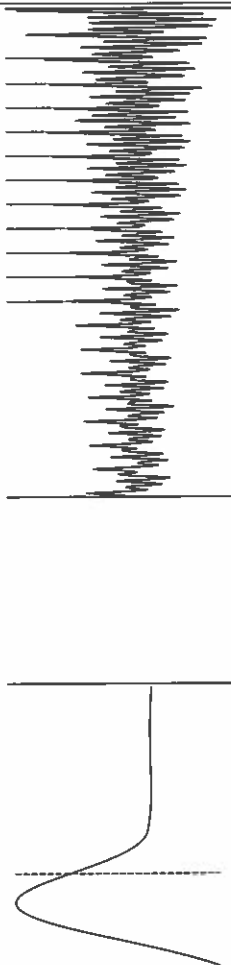
Do NOT Write in This Space - KCC USE ONLY
Date Tested: Results: Date Plugged: Date Repaired: Date Put Back in Service:
Review Completed by: Comments:
TA Approved: Yes Denied Date:

Mail to the Appropriate KCC Conservation Office:

Table with 2 columns: Office Address, Phone. Rows for District Office #1, #2, #3, #4.



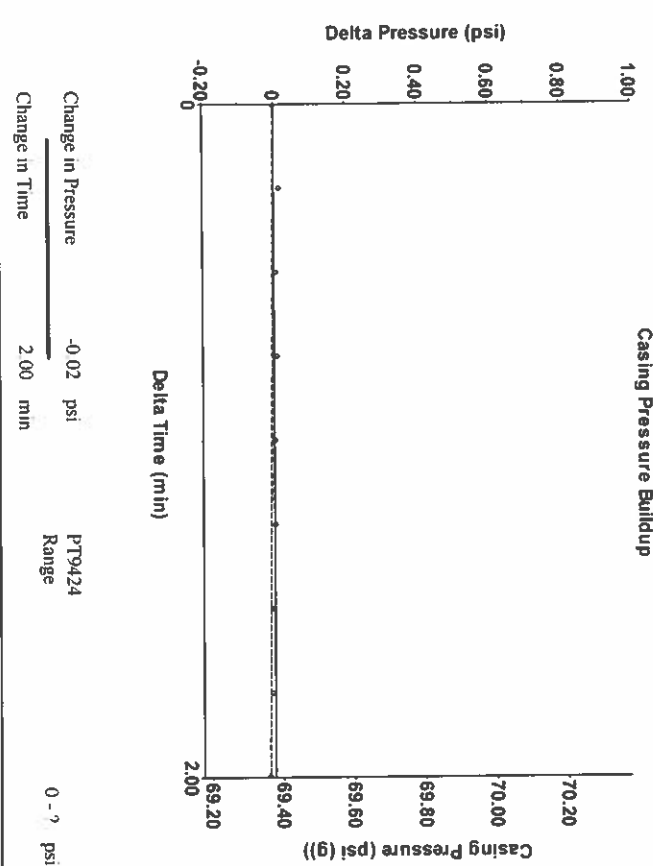
Filter Type High Pass Automatic Collar Count Yes
 Manual Acoustic Velocity 1268 ft/s Manual JTS/sec 20
 Time 5.739 sec
 Joints 116.361 Jts
 Depth 3688.64 ft



Analysis Method: Automatic

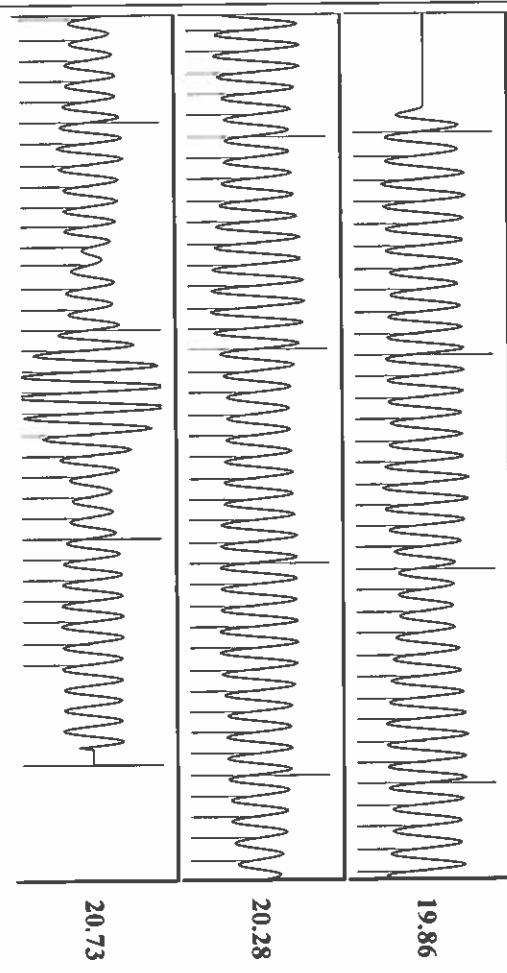
Group: TAD WELLS Well: HARMON A-3 (acquired on: 05/27/20 12:10:03)

Production	Potential	Casing Pressure	Producing
Oil -*- Water -*- Gas -*-	-*- BBL/D -*- BBL/D -*- Mscf/D	69.4 psi (g) Casing Pressure Buildup -0.015 psi 2.00 min	Annular Gas Flow 0 Mscf/D % Liquid 100 %
IPR Method PBHP/SBHP Production Efficiency	Vogel -*- 0.0	Gas/Liquid Interface Pressure 77.2 psi (g)	
Oil 40 deg API Water 1.05 Sp.Gr. H2O Gas 0.71 Sp.Gr. AIR		Liquid Level Depth 3688.64 ft Pump Intake Depth 4627.00 ft Formation Depth 4947.00 ft	
Acoustic Velocity	1285.46 ft/s		
Formation Submergence Total Gaseous Liquid Column HT (TVD) Equivalent Gas Free Liquid HT (TVD)		938 ft 938 ft	
Acoustic Test			Pump Intake 391.8 psi (g) Producing BHP 537.3 psi (g) Static BHP -*- psi (g)



Change in Pressure -0.02 psi
 Change in Time 2.00 min
 PT9424 Range
 0 - ? psi

Group: TAD WELLS Well: HARMON A-3 (acquired on: 05/27/20 12:10:03)



Acoustic Velocity 1285.46 ft/s
 Joints Per Second 20.2754 Jts/sec
 Depth to liquid level 3688.64 ft
 Automatic Collar Count Yes

Joints counted 106
 Joints to liquid level 116.361
 Filler Width 18
 Time to 1st Collar 0.276

June 02, 2020

Katherine McClurkan
Merit Energy Company, LLC
13727 Noel Road, Suite 1200
Dallas, TX 75240-7362

Re: Temporary Abandonment
API 15-129-20481-00-01
Harmon A 3
SW/4 Sec.13-33S-43W
Morton County, Kansas

Dear Katherine McClurkan:

"Your temporary abandonment (TA) application for the well listed above has been approved. In accordance with K.A.R. 82-3-111 the TA status of this well will expire 06/02/2021.

- * If you return this well to service or plug it, please notify the District Office.
- * If you sell this well you are required to file a Transfer of Operator form, T-1.
- * If the well will remain temporarily abandoned, you must submit a new TA application, CP-111, before 06/02/2021.

You may contact me at the number above if you have questions.

Very truly yours,

Michael Maier"