

KANSAS CORPORATION COMMISSION
OIL & GAS CONSERVATION DIVISION

Form must be Typed
Form must be signed

All blanks must be complete

TEMPORARY ABANDONMENT WELL APPLICATION

OPERATOR: License#
Name:
Address 1:
Address 2:
City: State: Zip:
Contact Person:
Phone:
Contact Person Email:
Field Contact Person:
Field Contact Person Phone:

API No. 15-
Spot Description:
Sec. Twp. S. R.
feet from N / S Line of Section
feet from E / W Line of Section
GPS Location: Lat: , Long:
Datum: NAD27 NAD83 WGS84
County: Elevation: GL KB
Lease Name: Well #:
Well Type: Oil Gas OG WSW Other:
SWD Permit #: ENHR Permit #:
Gas Storage Permit #:
Spud Date: Date Shut-In:

Table with 7 columns: Conductor, Surface, Production, Intermediate, Liner, Tubing. Rows include Size, Setting Depth, Amount of Cement, Top of Cement, Bottom of Cement.

Casing Fluid Level from Surface: How Determined? Date:
Casing Squeeze(s): to w / sacks of cement, to w / sacks of cement. Date:
Do you have a valid Oil & Gas Lease? Yes No
Depth and Type: Junk in Hole at Tools in Hole at Casing Leaks: Yes No Depth of casing leak(s):
Type Completion: ALT. I ALT. II Depth of: DV Tool: w / sacks of cement Port Collar: w / sack of cement
Packer Type: Size: Inch Set at: Feet
Total Depth: Plug Back Depth: Plug Back Method:

Geological Date:

Table with 4 columns: Formation Name, Formation Top, Formation Base, Completion Information. Rows 1 and 2.

UNDER PENALTY OF PERJURY I HEREBY ATTEST THAT THE INFORMATION CONTAINED HEREIN IS TRUE AND CORRECT TO THE BEST OF MY KNOWLEDGE

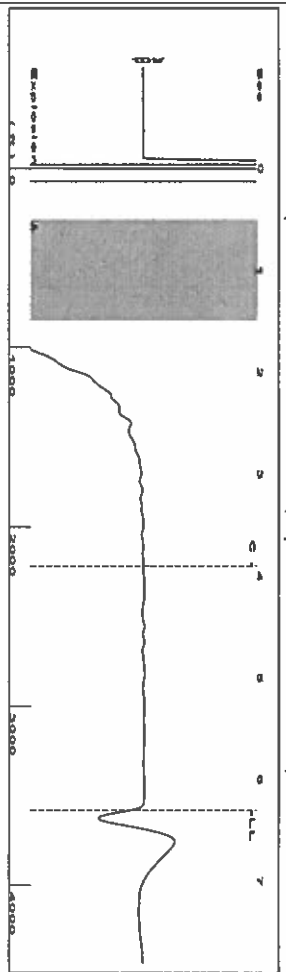
Submitted Electronically

Do NOT Write in This Space - KCC USE ONLY
Date Tested: Results: Date Plugged: Date Repaired: Date Put Back in Service:
Review Completed by: Comments:
TA Approved: Yes Denied Date:

Mail to the Appropriate KCC Conservation Office:

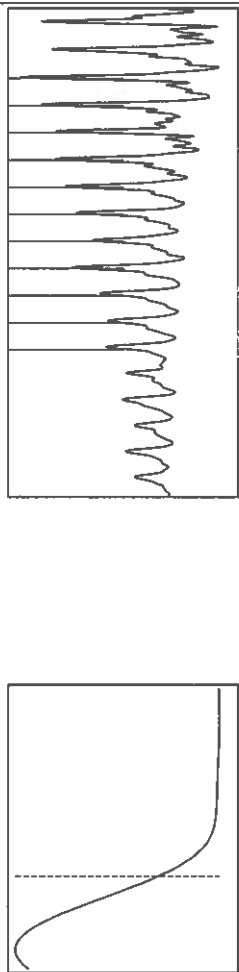
Table with 3 columns: District Office #, Address, Phone. Includes map of Kansas with numbered districts 1-4.

Group: Route 2 Well: Henselmann A3 (acquired on: 05/26/20 10:15:03 )



Filter Type High Pass  
Manual Acoustic Velocity 1135.2 ft/s  
Automatic Collar Count Yes  
Manual JTS/sec 17.9211  
Time 6.301 sec  
Joints 112.89 Jts  
Depth 3578.61 ft

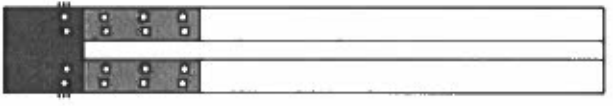
0.5 to 1.5 (Sec)



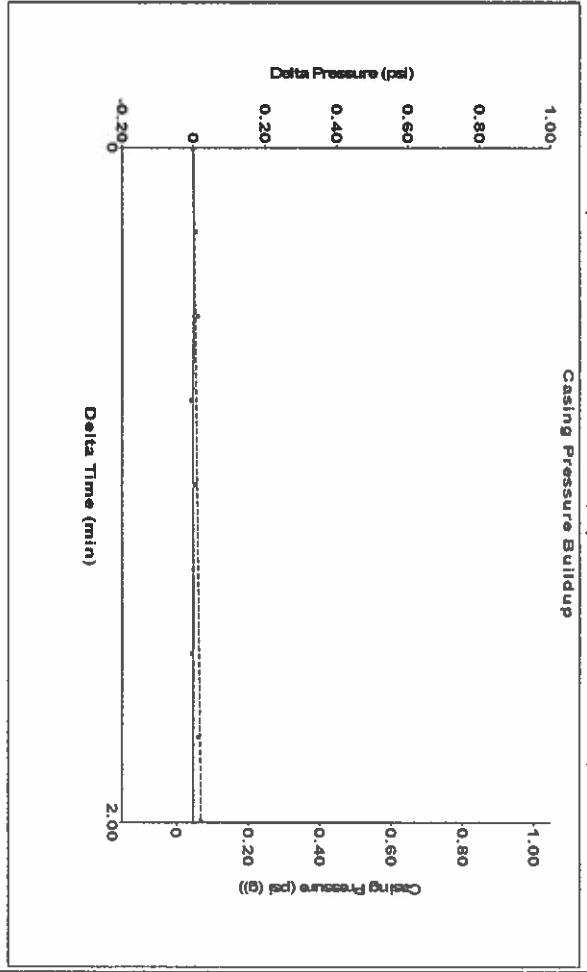
Analysis Method: Automatic

Group: Route 2 Well: Henselmann A3 (acquired on: 05/26/20 10:15:03 )

Production	Potential	Casing Pressure	Producing
Oil -*- Water -* Gas -*-	BBL/D BBL/D Mscf/D	0.0 psi (g) Casing Pressure Buildup 0.0 psi	Annular Gas Flow 0 Mscf/D % Liquid 100 %
JPR Method PBHP/SBHP Production Efficiency	Vogel --* 0.0	Gas/Liquid Interface Pressure 1.6 psi (g)	
Oil 40 deg API Water 1.05 Sp.Gr H2O Gas 0.85 Sp.Gr AIR	Liquid Level Depth 3578.61 ft		
Acoustic Velocity	1135.89 ft/s	Pump Intake Depth 4800.00 ft Formation Depth 5000.00 ft	Pump Intake 414.0 psi (g) Producing BHP 504.9 psi (g) Static BHP --* psi (g)
Formation Submergence Total Gaseous Liquid Column HT (TVD) Equivalent Gas Free Liquid HT (TVD)	1221 ft 1221 ft		
Acoustic Test			

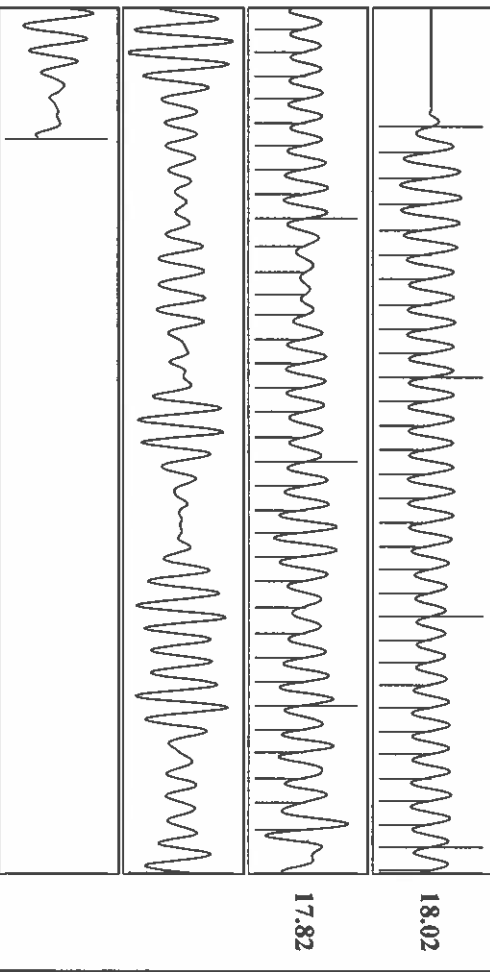


Group: Route 2 Well: Henselmann A3 (acquired on: 05/26/20 10:15:03 )



Change in Pressure 0.02 psi  
Change in Time 2.00 min  
PT 6902  
Range 0 - 2 psi

Group: Route 2 Well: Henselmann A3 (acquired on: 05/26/20 10:15:03 )



Acoustic Velocity 1135.89 ft/s  
Joints Per Second 17.9162 Jts/Sec  
Depth to liquid level 3578.61 ft  
Automatic Collar Count Yes  
Joints counted 65  
Joints to liquid level 112.89  
Filter Width 15.9211  
Time to 1st Collar 0.272  
3.9

June 02, 2020

Katherine McClurkan  
Merit Energy Company, LLC  
13727 Noel Road, Suite 1200  
Dallas, TX 75240-7362

Re: Temporary Abandonment  
API 15-055-21105-00-03  
Henselmann A 3  
NE/4 Sec.34-22S-34W  
Finney County, Kansas

Dear Katherine McClurkan:

"Your temporary abandonment (TA) application for the well listed above has been approved. In accordance with K.A.R. 82-3-111 the TA status of this well will expire 06/02/2021.

- \* If you return this well to service or plug it, please notify the District Office.
- \* If you sell this well you are required to file a Transfer of Operator form, T-1.
- \* If the well will remain temporarily abandoned, you must submit a new TA application, CP-111, before 06/02/2021.

You may contact me at the number above if you have questions.

Very truly yours,

Michael Maier"