

KANSAS CORPORATION COMMISSION
OIL & GAS CONSERVATION DIVISION

TEMPORARY ABANDONMENT WELL APPLICATION

OPERATOR: License# \_\_\_\_\_
Name: \_\_\_\_\_
Address 1: \_\_\_\_\_
Address 2: \_\_\_\_\_
City: \_\_\_\_\_ State: \_\_\_\_\_ Zip: \_\_\_\_\_ + \_\_\_\_\_
Contact Person: \_\_\_\_\_
Phone:( \_\_\_\_\_ ) \_\_\_\_\_
Contact Person Email: \_\_\_\_\_
Field Contact Person: \_\_\_\_\_
Field Contact Person Phone: ( \_\_\_\_\_ ) \_\_\_\_\_

API No. 15- \_\_\_\_\_
Spot Description: \_\_\_\_\_
Sec. \_\_\_\_\_ Twp. \_\_\_\_\_ S. R. \_\_\_\_\_ E \_\_\_\_\_ W \_\_\_\_\_
feet from \_\_\_\_\_ N / \_\_\_\_\_ S Line of Section
feet from \_\_\_\_\_ E / \_\_\_\_\_ W Line of Section
GPS Location: Lat: \_\_\_\_\_, Long: \_\_\_\_\_
Datum: \_\_\_\_\_ NAD27 \_\_\_\_\_ NAD83 \_\_\_\_\_ WGS84
County: \_\_\_\_\_ Elevation: \_\_\_\_\_ GL \_\_\_\_\_ KB
Lease Name: \_\_\_\_\_ Well #: \_\_\_\_\_
Well Type: (check one) \_\_\_\_\_ Oil \_\_\_\_\_ Gas \_\_\_\_\_ OG \_\_\_\_\_ WSW \_\_\_\_\_ Other: \_\_\_\_\_
\_\_\_\_\_ SWD Permit #: \_\_\_\_\_ ENHR Permit #: \_\_\_\_\_
\_\_\_\_\_ Gas Storage Permit #: \_\_\_\_\_
Spud Date: \_\_\_\_\_ Date Shut-In: \_\_\_\_\_

Table with 7 columns: Conductor, Surface, Production, Intermediate, Liner, Tubing. Rows include Size, Setting Depth, Amount of Cement, Top of Cement, Bottom of Cement.

Casing Fluid Level from Surface: \_\_\_\_\_ How Determined? \_\_\_\_\_ Date: \_\_\_\_\_
Casing Squeeze(s): \_\_\_\_\_ to \_\_\_\_\_ w / \_\_\_\_\_ sacks of cement, \_\_\_\_\_ to \_\_\_\_\_ w / \_\_\_\_\_ sacks of cement. Date: \_\_\_\_\_
Do you have a valid Oil & Gas Lease? \_\_\_\_\_ Yes \_\_\_\_\_ No
Depth and Type: \_\_\_\_\_ Junk in Hole at \_\_\_\_\_ Tools in Hole at \_\_\_\_\_ Casing Leaks: \_\_\_\_\_ Yes \_\_\_\_\_ No Depth of casing leak(s): \_\_\_\_\_
Type Completion: \_\_\_\_\_ ALT. I \_\_\_\_\_ ALT. II Depth of: \_\_\_\_\_ DV Tool: \_\_\_\_\_ w / \_\_\_\_\_ sacks of cement \_\_\_\_\_ Port Collar: \_\_\_\_\_ w / \_\_\_\_\_ sack of cement
Packer Type: \_\_\_\_\_ Size: \_\_\_\_\_ Inch Set at: \_\_\_\_\_ Feet
Total Depth: \_\_\_\_\_ Plug Back Depth: \_\_\_\_\_ Plug Back Method: \_\_\_\_\_

Geological Data:

Table with 4 columns: Formation Name, Formation Top, Formation Base, Completion Information. Rows 1 and 2.

UNDER PENALTY OF PERJURY I HEREBY ATTEST THAT THE INFORMATION CONTAINED HEREIN IS TRUE AND CORRECT TO THE BEST OF MY KNOWLEDGE

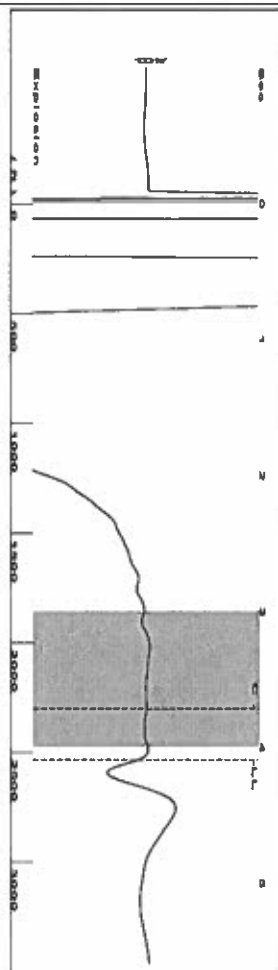
Submitted Electronically

Do NOT Write in This Space - KCC USE ONLY
Date Tested: \_\_\_\_\_ Results: \_\_\_\_\_ Date Plugged: \_\_\_\_\_ Date Repaired: \_\_\_\_\_ Date Put Back in Service: \_\_\_\_\_
Review Completed by: \_\_\_\_\_ Comments: \_\_\_\_\_
TA Approved: \_\_\_\_\_ Yes \_\_\_\_\_ Denied Date: \_\_\_\_\_

Mail to the Appropriate KCC Conservation Office:

Table with 3 columns: District Office #, Address, Phone. Rows 1-4.

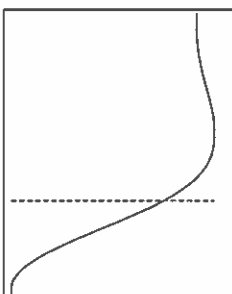
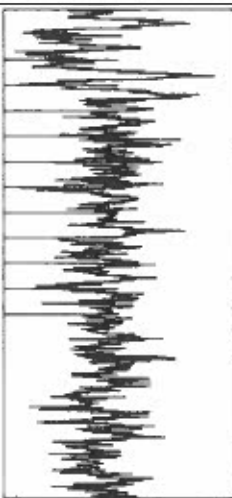
Group: TAD Well: kerfoot a-1 (acquired on: 05/26/20 13:30:15)



Filter Type High Pass  
 Manual Acoustic Veloc 1214.56 ft/s  
 Automatic Collar Count Yes  
 Manual JTS/sec 19.1571

Time 4.087 sec  
 Joints 79,8801 Jts  
 Depth 2532.20 ft

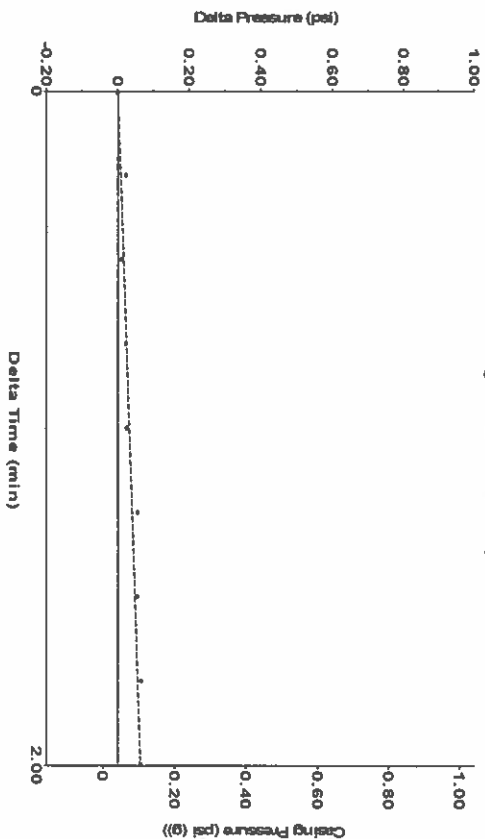
3.0 to 4.0 (Sec)



**Analysis Method: Automatic**

Group: TAD Well: kerfoot a-1 (acquired on: 05/26/20 13:30:15)

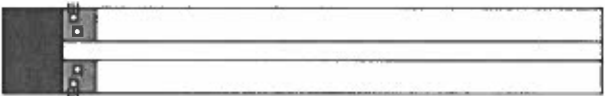
Group: TAD Well: kerfoot a-1 (acquired on: 05/26/20 13:30:15)



Change in Pressure 0.06 psi  
 Change in Time 2.00 min  
 PT 6902  
 Range 0 - 7 psi

Production	Potential	Casing Pressure	Producing
Oil -*- BBL/D	-*- BBL/D	0.0 psi (g)	Annular Gas Flow
Water -*- BBL/D	-*- BBL/D	0.1 psi	0 Mscf/D
Gas -*- Mscf/D	-*- Mscf/D	2.00 min	% Liquid
IPR Method Vogel	-*- Vogel	Gas/Liquid Interface Pressure	98 %
PBHP/SBHP	-*- Production Efficiency	1.0 psi (g)	
	0.0	Liquid Level Depth	
Oil 40 deg API		2532.20 ft	
Water 1.05 Sp.Gr.H2O		Pump Intake Depth	
Gas 0.77 Sp.Gr.AIR		2726.00 ft	
Acoustic Velocity 1239.15 ft/s		Formation Depth	
		2664.00 ft	

Pump Intake 66.0 psi (g)  
 Producing BHP 45.0 psi (g)  
 Static BHP -\*- psi (g)

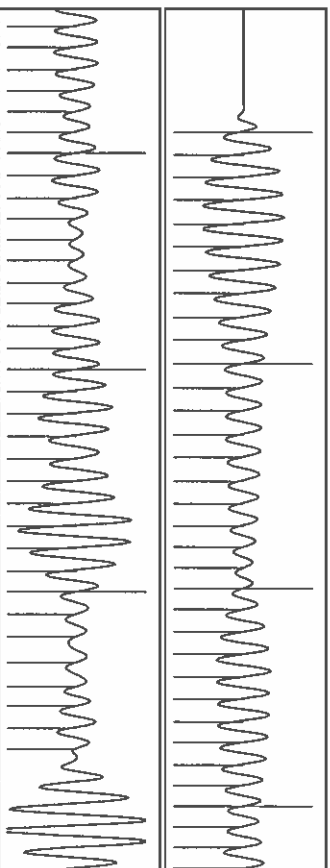


Group: TAD Well: kerfoot a-1 (acquired on: 05/26/20 13:30:15)

Acoustic Velocity 1239.15 ft/s  
 Joints Per Second 19.5449 Jts/Sec  
 Depth to liquid level 2532.2 ft  
 Automatic Collar Count Yes  
 Joints counted 67  
 Joints to liquid level 79,8801  
 Filter Width 17.1571  
 Time to 1st Collar 0.284  
 21.1571  
 3.712

19.72

19.37



June 02, 2020

Katherine McClurkan  
Merit Energy Company, LLC  
13727 Noel Road, Suite 1200  
Dallas, TX 75240-7362

Re: Temporary Abandonment  
API 15-055-00354-00-00  
Kerfoot - A 1  
NW/4 Sec.32-23S-31W  
Finney County, Kansas

Dear Katherine McClurkan:

"Your temporary abandonment (TA) application for the well listed above has been approved. In accordance with K.A.R. 82-3-111 the TA status of this well will expire 06/02/2021.

- \* If you return this well to service or plug it, please notify the District Office.
- \* If you sell this well you are required to file a Transfer of Operator form, T-1.
- \* If the well will remain temporarily abandoned, you must submit a new TA application, CP-111, before 06/02/2021.

You may contact me at the number above if you have questions.

Very truly yours,

Michael Maier"